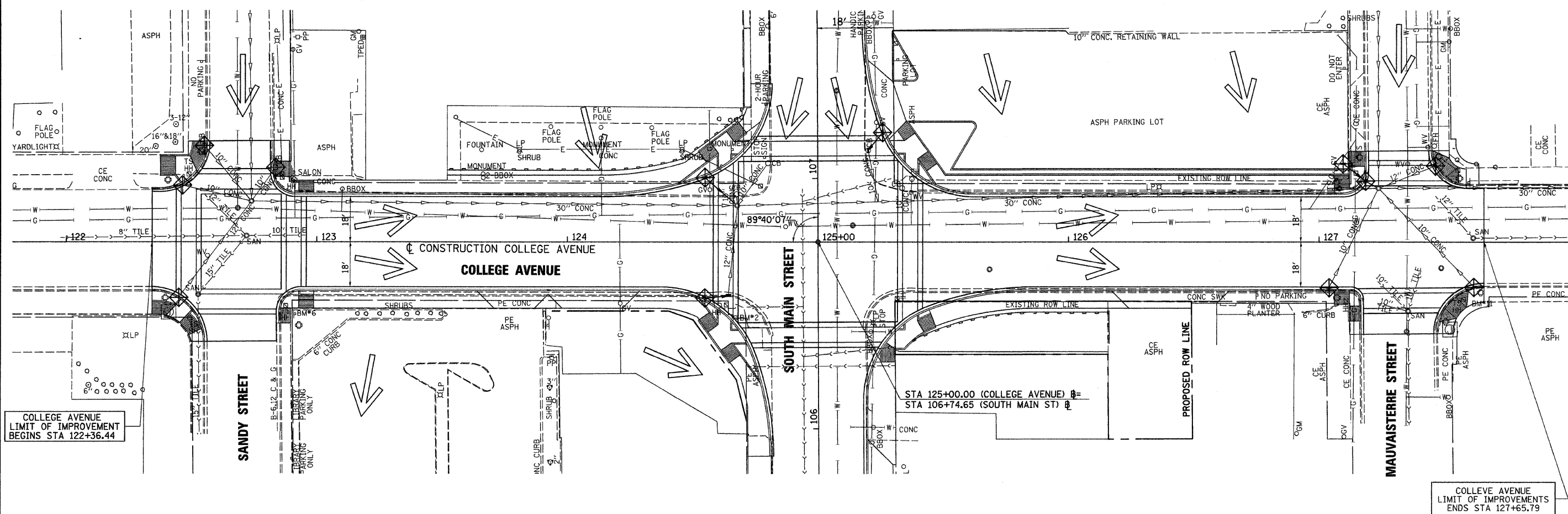


| | | |
|------|----------------|------|
| PLAN | SURVEYED | DATE |
| | PLOTTED | |
| | ENGINEER | |
| | REVIEWED | |
| | BY | |
| | DATE | |
| | NO. OF SHEETS | |
| | CADD FILE NAME | |
| | NO. | |

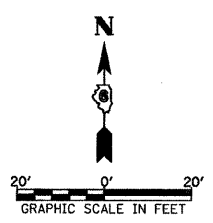
| | | |
|---------|--------------------------|------|
| PROFILE | SURVEYED | DATE |
| | PLOTTED | |
| | ENGINEER | |
| | REVIEWED | |
| | BY | |
| | DATE | |
| | NO. OF SHEETS | |
| | STRUCTURE NOTATIONS CHRD | |
| | NO. | |



COLLEGE AVENUE
LIMIT OF IMPROVEMENT
BEGINS STA 122+36.44

COLLEGE AVENUE
LIMIT OF IMPROVEMENTS
ENDS STA 127+65.79

- TEMPORARY EROSION CONTROL LEGEND**
- PERIMETER EROSION BARRIER
 - INLET AND PIPE PROTECTION (BEFORE PAVING)/
INLET FILTERS (AFTER PAVING)
 - OVERLAND FLOW DIRECTION



FILE NAME =
v:\transportation\2893\COLLEGE001.dgn

USER NAME = jolson
PLOT SCALE = 28.0000 "/ IN.
PLOT DATE = 2/23/2011

DESIGNED - JRB
DRAWN - JMO
CHECKED - JRB
DATE - 2/22/11

REVISED -
REVISED -
REVISED -
REVISED -

**STATE OF ILLINOIS
DEPARTMENT OF TRANSPORTATION**

**CITY OF JACKSONVILLE DOWNTOWN STREETS RECONSTRUCTION
COLLEGE AVENUE EROSION CONTROL SHEET**

SCALE: 1" = 20' SHEET NO. OF SHEETS STA. 122+36.44 TO STA. 127+65.79

| | | | | |
|---|----------------|--------|--------------|-----------|
| F.A. RTE. | SECTION | COUNTY | TOTAL SHEETS | SHEET NO. |
| N/A | 10-00121-01-PV | MORGAN | 77 | 26 |
| CONTRACT NO. 93547 | | | | |
| FED. ROAD DIST. NO. ILLINOIS FED. AID PROJECT | | | | |