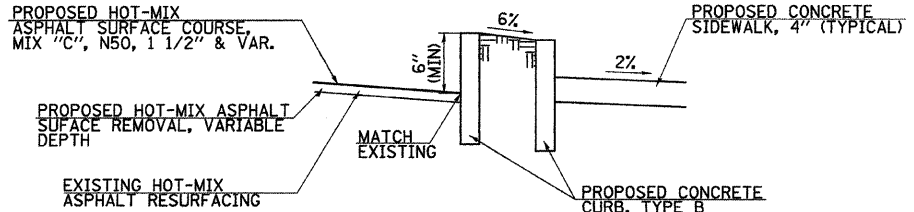
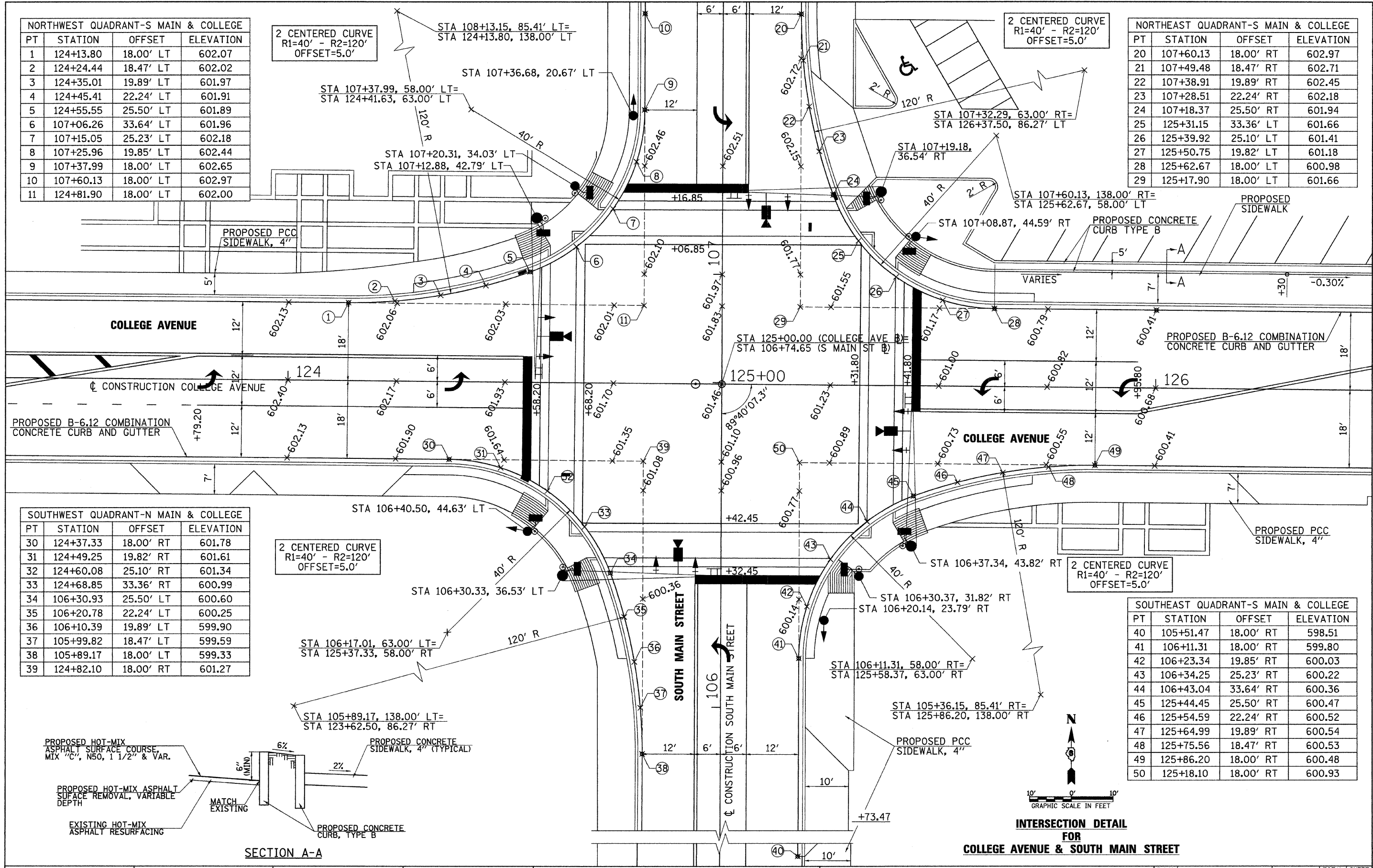


NORTHWEST QUADRANT-S MAIN & COLLEGE			
PT	STATION	OFFSET	ELEVATION
1	124+13.80	18.00' LT	602.07
2	124+24.44	18.47' LT	602.02
3	124+35.01	19.89' LT	601.97
4	124+45.41	22.24' LT	601.91
5	124+55.55	25.50' LT	601.89
6	107+06.26	33.64' LT	601.96
7	107+15.05	25.23' LT	602.18
8	107+25.96	19.85' LT	602.44
9	107+37.99	18.00' LT	602.65
10	107+60.13	18.00' LT	602.97
11	124+81.90	18.00' LT	602.00

NORTHEAST QUADRANT-S MAIN & COLLEGE			
PT	STATION	OFFSET	ELEVATION
20	107+60.13	18.00' RT	602.97
21	107+49.48	18.47' RT	602.71
22	107+38.91	19.89' RT	602.45
23	107+28.51	22.24' RT	602.18
24	107+18.37	25.50' RT	601.94
25	125+31.15	33.36' LT	601.66
26	125+39.92	25.10' LT	601.41
27	125+50.75	19.82' LT	601.18
28	125+62.67	18.00' LT	600.98
29	125+17.90	18.00' LT	601.66

SOUTHWEST QUADRANT-N MAIN & COLLEGE			
PT	STATION	OFFSET	ELEVATION
30	124+37.33	18.00' RT	601.78
31	124+49.25	19.82' RT	601.61
32	124+60.08	25.10' RT	601.34
33	124+68.85	33.36' RT	600.99
34	106+30.93	25.50' LT	600.60
35	106+20.78	22.24' LT	600.25
36	106+10.39	19.89' LT	599.90
37	105+99.82	18.47' LT	599.59
38	105+89.17	18.00' LT	599.33
39	124+82.10	18.00' RT	601.27

SOUTHEAST QUADRANT-S MAIN & COLLEGE			
PT	STATION	OFFSET	ELEVATION
40	105+51.47	18.00' RT	598.51
41	106+11.31	18.00' RT	599.80
42	106+23.34	19.85' RT	600.03
43	106+34.25	25.23' RT	600.22
44	106+43.04	33.64' RT	600.36
45	125+44.45	25.50' RT	600.47
46	125+54.59	22.24' RT	600.52
47	125+64.99	19.89' RT	600.54
48	125+75.56	18.47' RT	600.53
49	125+86.20	18.00' RT	600.48
50	125+18.10	18.00' RT	600.93



SECTION A-A

INTERSECTION DETAIL FOR COLLEGE AVENUE & SOUTH MAIN STREET

FILE NAME = v:\transportation\2893\28931004.dgn	USER NAME = jolson	DESIGNED - JRB	REVISED -
		DRAWN - JMO	REVISED -
		CHECKED - JRB	REVISED -
		DATE - 2/22/11	REVISED -

STATE OF ILLINOIS  
DEPARTMENT OF TRANSPORTATION

CITY OF JACKSONVILLE DOWNTOWN STREETS RECONSTRUCTION  
INTERSECTION DETAILS

SCALE: 1" = 10' SHEET NO. OF SHEETS STA. TO STA.

F.A.U. RTE.	SECTION	COUNTY	TOTAL SHEETS	SHEET NO.
N/A	10-00121-01-PV	MORGAN	77	42
CONTRACT NO. 93547				

FED. ROAD DIST. NO. 6 ILLINOIS FED. AID PROJECT