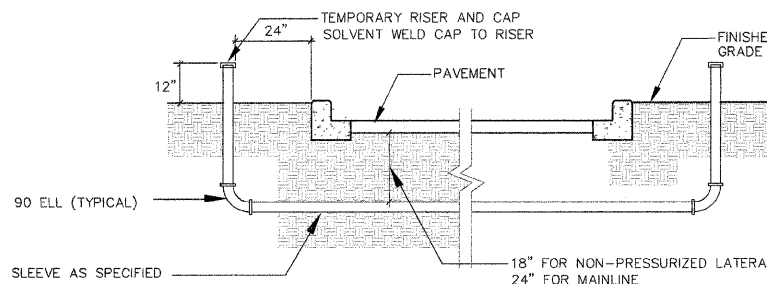


IRRIGATION LEGEND

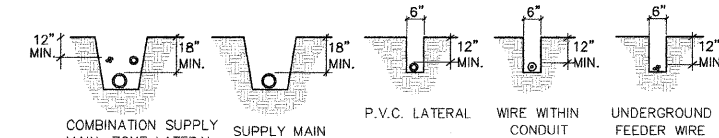
	LATERAL LINE - 1" DIA., CLASS 160
	PVC SLEEVES - 2 OR 3" DIA., CLASS 200
	DRIP IRRIGATION LINE - DL2000 SERIES, 18" EMITTER SPACING
	NETAFIM MANUAL FLUSH VALVE #TISOV

IRRIGATION SCHEDULE

UNITS	HEAD	DESCRIPTION
MODIFIED ZONE #6		
650'	DRIP	DRIP TUBING-18" O.C. EMITTER SPACING
NEW ZONE #25 (7.02 GPM)		
810'	DRIP	DRIP TUBING-18" O.C. EMITTER SPACING

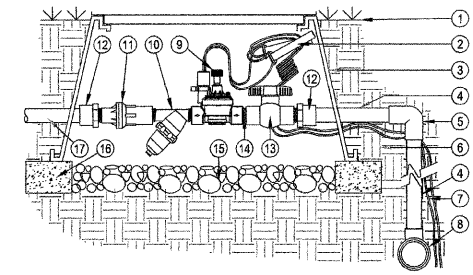


L 3-1 SLEEVE INSTALLATION NOT TO SCALE



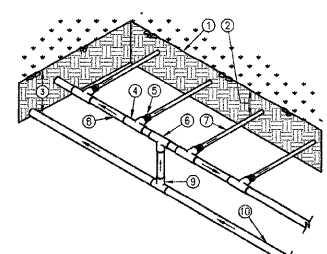
- DETAIL NOTES:**
1. ALL WIRING TO BE SNAKED IN TRENCHES.
 2. ALL WIRING TO BE INSTALLED PER LOCAL CODES.
 3. ALL WIRING TO BE BUNDLED AND TAPED AT 10' INTERVALS.
 4. ALL MAIN SUPPLY LINES TO BE INSTALLED PER MANUFACTURER'S SPECIFICATIONS.
 5. PROVIDE SLEEVES FOR ALL PIPES AND WIRES UNDER ALL PAVED SURFACES EXCEPT BRICK PAVEMENT AREAS.

L 3-2 TRENCHING DETAIL NOT TO SCALE



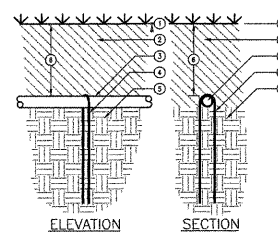
- LEGEND**
1. FINISH GRADE
 2. CONTROL WIRES WITH 36" SERVICE COIL AND WATER PROOF WIRE CONNECTIONS, DBY OR EQUAL RECTANGULAR PLASTIC VALVE BOX. HEAT BRAND STATION NUMBER ON LID IN 2" HIGH CHARACTERS
 3. PVC MAINLINE PER SPECIFICATIONS (LENGTH AS REQUIRED)
 4. SCH 40 PVC ELL (SxS)
 5. NATIVE SOIL PER SPECIFICATIONS
 6. CONTROL WIRES TO CONTROLLER
 7. PVC MAINLINE FITTING
 8. INLINE VALVE
 9. MESH Y-FILTER
 10. LOW FLOW PRESSURE REGULATOR
 11. SCH 40 PVC MALE ADAPTER
 12. SCH 40 PVC BALL VALVE
 13. SCH 80 PVC CLOSE NIPPLE
 14. PEA GRAVEL SUMP, MINIMUM 6" DEEP
 15. BRICK SUPPORTS (4 COMMON BRICKS REQUIRED)
 16. LATERAL LINE TO DRIP SYSTEM
 17. LATERAL LINE TO DRIP SYSTEM

L 3-3 DRIP ZONE VALVE INSTALLED IN TOWN SQ. PARK NOT TO SCALE



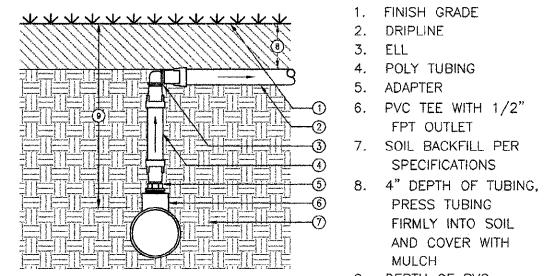
1. FINISH GRADE
2. DEPTH OF TUBING, PRESS FIRMLY INTO SOIL AND COVER WITH MULCH
3. DEPTH OF PVC SUPPLY MANIFOLD, 12"
4. PVC TEE (SxSxT)
5. TORO LOC-EZE X 1/2" MPT ADAPTER (FAM16)
6. PVC TEE (SxSxS)
7. TORO DL2000 DRIPLINE LATERAL (RGP-4-18)
8. PVC SUB-MANIFOLD
9. PVC TEE (SxSxS)
10. PVC SUPPLY MANIFOLD FROM DRIP ZONE KIT

L 3-5 DRIP TUBING DIAGRAM NOT TO SCALE



1. FINISH GRADE
 2. MULCH
 3. DRIPLINE
 4. STEEL SOIL STAPLE - 48" O.C.
 5. SOIL PER SPECIFICATIONS
 6. 4" DEPTH OF TUBING, PRESS FIRMLY INTO SOIL AND COVER WITH MULCH
 7. SOIL BACKFILL PER SPECIFICATIONS
 8. 4" DEPTH OF TUBING, PRESS TUBING FIRMLY INTO SOIL AND COVER WITH MULCH
 9. DEPTH OF PVC MANIFOLD, 12"
- NOTE: LOCATE STAPLES ALONG TUBING AT 4'-6" ON CENTER AND AT ALL FITTINGS (TEES, ELLS, ETC.)

L 3-6 DRIP STAPLING NOT TO SCALE



L 3-7 DRIP CONNECTION NOT TO SCALE

FILE NAME =	USER NAME =	DESIGNED - SM	REVISED -
\$FILE\$		DRAWN - NFB	REVISED -
	PLOT SCALE = 1" = 30'	CHECKED - SM	REVISED -
	PLOT DATE = 2-8-2011	DATE - 2-8-2011	REVISED -

**STATE OF ILLINOIS
DEPARTMENT OF TRANSPORTATION**

**CITY OF JACKSONVILLE DOWNTOWN MAIN STREET IMPROVEMENTS
IRRIGATION PLAN**

SCALE: 1"=30' SHEET NO. - OF - SHEETS STA. _____ TO STA. _____

F.A. RTE.	SECTION	COUNTY	TOTAL SHEETS	SHEET NO.
N/A	10-00121-01-PV	MORGAN	77	50
CONTRACT NO. 93547				
FED. ROAD DIST. NO. - ILLINOIS FED. AID PROJECT				