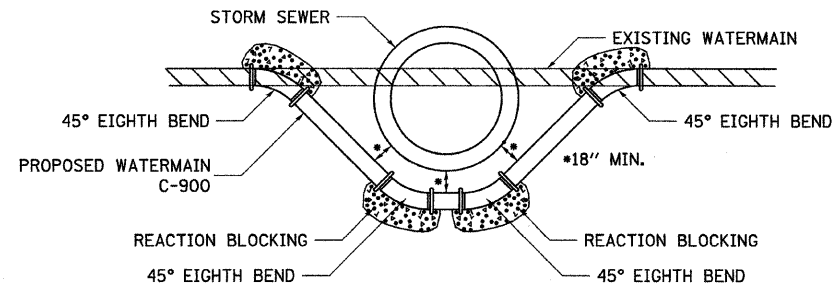


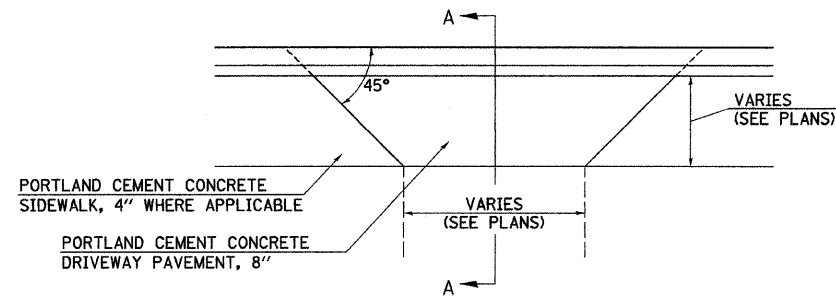
DATE	
BY	
PLAN	
NO. _____	
NOTE BOOK	
NO. _____	
SURVEYED	
PLOTTED	
REVISIONS CHECKED	
DATE OF WAY CHECKED	
CADD FILE NAME	

DATE	
BY	
PROFILE	
NO. _____	
NOTE BOOK	
NO. _____	
SURVEYED	
PLOTTED	
REVISIONS CHECKED	
DATE OF WAY CHECKED	
STRUCTURE NOTATION DPKD	

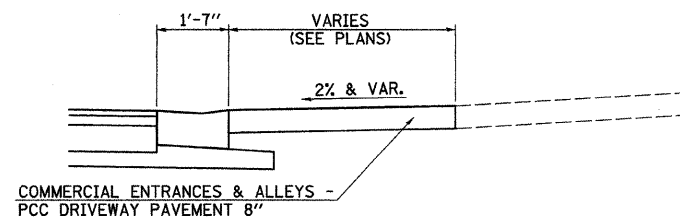


*NOTE: ALL FITTINGS TO BE RESTRAINED JOINT

DETAIL OF LOWERING WATERMAIN



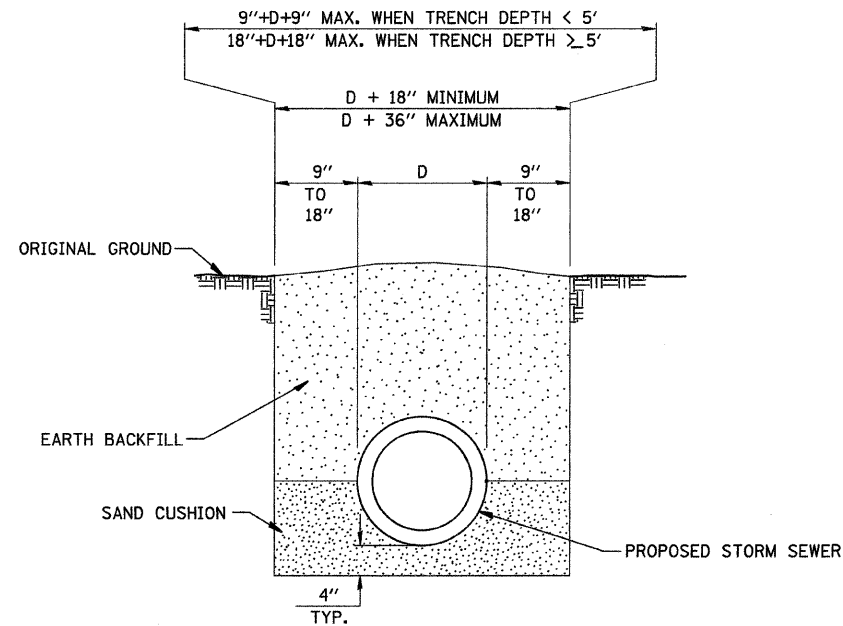
PLAN



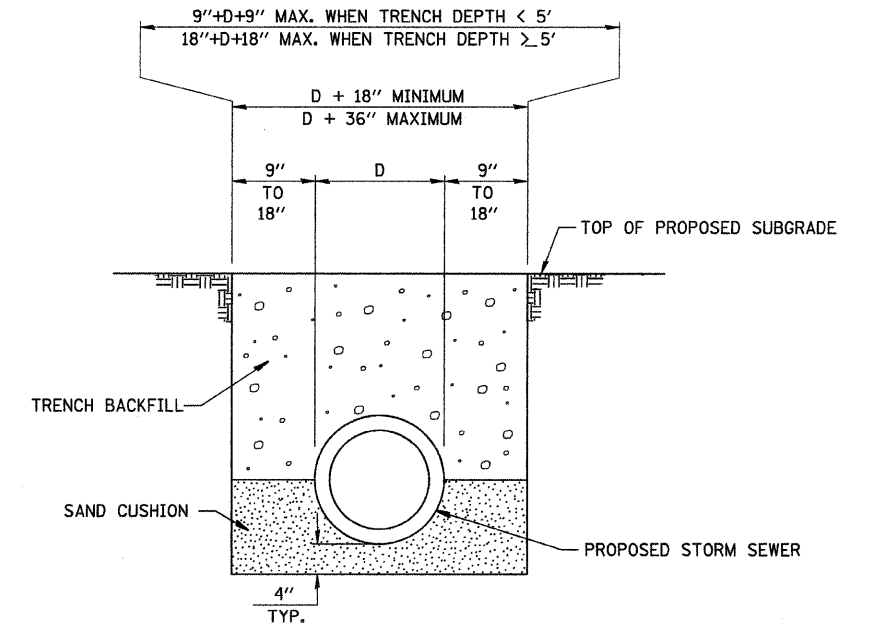
**SECTION A-A
PROPOSED ENTRANCE DETAIL**

NOTES FOR ENTRANCES

- CONSTRUCTION BEHIND PCC DRIVEWAY PAVEMENT:
 - EXISTING AGGREGATE PRIVATE ENTRANCES - AGGREGATE SURFACE COURSE, TYPE B, 6"
 - EXISTING AGGREGATE COMMERCIAL ENTRANCES - AGGREGATE SURFACE COURSE, TYPE B, 8"
 - EXISTING BITUMINOUS OR OIL AND CHIP ENTRANCE - AGGREGATE BASE COURSE, TYPE A, 6" WITH INCIDENTAL BITUMINOUS SURFACING, 3"



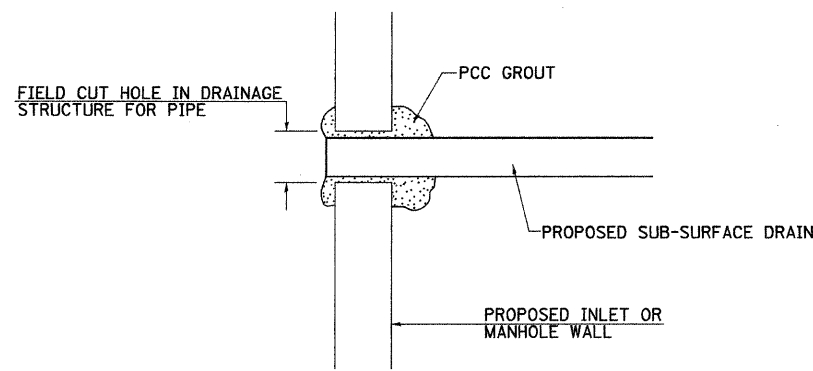
DETAIL OF TRENCH EXCAVATION AND BACKFILL UNDER TURF



DETAIL OF TRENCH EXCAVATION AND BACKFILL UNDER PROPOSED ROADWAY PAVEMENT AND ENTRANCES

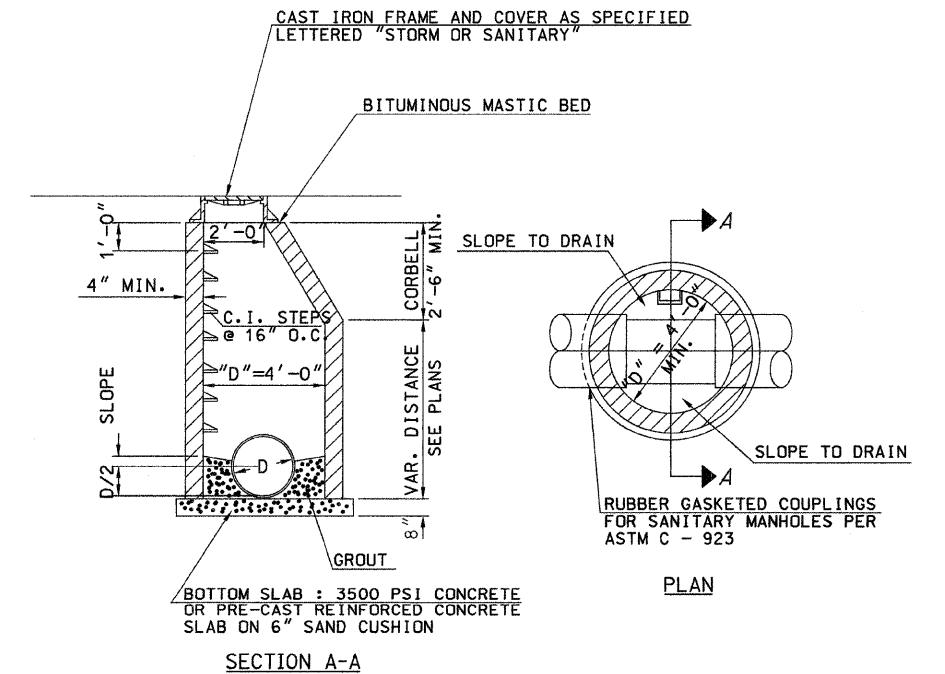
NOTE: STEPS REQUIRED, UNLESS DELETED BY SPECIAL PROVISIONS

MATERIAL WALL THICKNESS
 PRE-CAST CONCRETE - MINIMUM 1/12 "D"
 CONCRETE MASONRY UNITS MINIMUM 5"
 CAST-IN-PLACE CONCRETE MINIMUM 6"
 BRICK MASONRY UNITS MINIMUM 8"



NOTE: ALL ITEMS REQUIRED FOR CONNECTING SUB-SURFACE DRAINS TO PROPOSED DRAINAGE STRUCTURES SHALL BE CONSIDERED INCLUDED IN THE COST OF CONSTRUCTION THE PROPOSED DRAINAGE STRUCTURE.

DETAIL OF CONNECTING SUB-SURFACE DRAINS TO PROPOSED DRAINAGE STRUCTURES



SANITARY MANHOLE TYPE A DETAIL

FILE NAME = vs\transportation\2893\28930001.dgn	USER NAME = jelson	DESIGNED - JRB	REVISED -	STATE OF ILLINOIS DEPARTMENT OF TRANSPORTATION	CITY OF JACKSONVILLE DOWNTOWN STREETS RECONSTRUCTION SPECIAL DETAILS				F.A. RTE. N/A	SECTION 10-00121-01-PV	COUNTY MORGAN	TOTAL SHEETS 77	SHEET NO. 60
PLLOT SCALE = 20.0000' / IN.	CHECKED - JRB	REVISIED -	SCALE: N/A		SHEET NO.	OF	SHEETS	STA.	TO STA.	CONTRACT NO. 93547			
PLLOT DATE = 2/23/2011	DATE - 2/22/11	REVISIED -	FED. ROAD DIST. NO. ILLINOIS				FED. AID PROJECT						