

STATE OF ILLINOIS
DEPARTMENT OF TRANSPORTATION
DIVISION OF HIGHWAYS

**PLANS FOR PROPOSED
SURFACE TRANSPORTATION / RURAL PROGRAM w/ TARP**

ROUTE NO.	SECTION	COUNTY	TOTAL SHEETS	SHEET NO.
F.A.S. 432 C.H. 20	07-00057-02-RS	HANCOCK	8	1
F.H.W.A. REG. NO. 4	ILLINOIS AUGUSTA ROAD			

CONTRACT NO: 93548

AUGUSTA ROAD
F.A.S. RTE 432 (C.H. 20)
SECTION 07-00057-02-RS
HANCOCK COUNTY
PROJECT NO. RS-0432 (124)
JOB NO. C-96-209-11

INDEX OF SHEETS

SHEET NO.	TITLE
1	COVER SHEET
2	SUMMARY OF QUANTITIES, GENERAL NOTES, & TYPICAL SECTION
3	BUTT - JOINT, ENTRANCE, MAILBOX TURNOUT, SIDE ROAD, & SUB-SURFACE DRAINAGE DETAILS
4 - 8	PLAN & PROFILE

HIGHWAY STANDARDS

- 601001-04
- 601101-01
- 701001-02
- 701006-03
- 701011-02
- 701201-04
- 701301-04
- 701306-03
- 701901-01
- B.L.R. 24-2

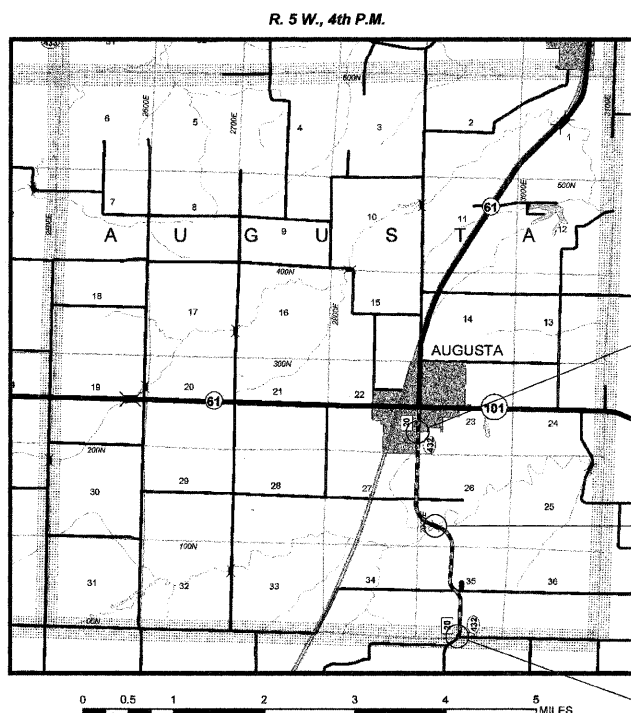
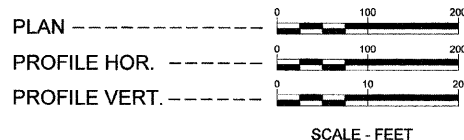
UTILITIES

- ADAMS ELECTRIC COOP. 217-593-7701x26
- ADAMS TELEPHONE COOP. 217-696-4411
- AUGUSTA, VILLAGE OF 217-440-4730
- AMEREN CIPS (North) 217-221-0825
- CLAYTON CAMP POINT WATER 217-593-7323

TOLL FREE JOINT UTILITY LOCATING
INFORMATION FOR EXCAVATORS (J.U.L.I.E.)
TELEPHONE NUMBER 1-800-892-0123

CONTRACT NO: 93548

SCALES



IMPROVEMENT ENDS
STA. 159+00

BRIDGE OMISSION: S.N. 034-3201
STA. 98+43.7 TO STA. 99+44.7

IMPROVEMENT BEGINS
STA. 26+00

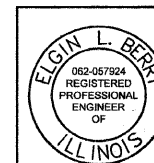
TOTAL LENGTH OF SECTION = 13,300.00 FEET = 2.519 MILES
NET LENGTH OF SECTION = 13,199.00 FEET = 2.500 MILES

HIGHWAY CLASS: MAJOR COLLECTOR

DESIGN: 3R

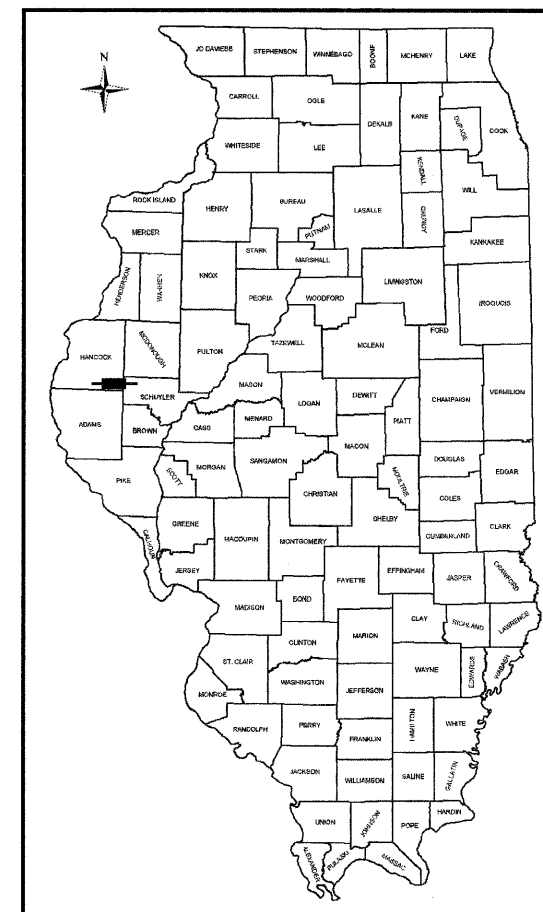
DESIGN SPEED: 50 MPH

ADT: 450



I HEREBY CERTIFY THAT THESE PLANS WERE PREPARED BY ME OR UNDER MY DIRECT PERSONAL SUPERVISION AND THAT I AM A DULY LICENSED PROFESSIONAL ENGINEER IN ACCORDANCE WITH THE LAWS OF THE STATE OF ILLINOIS.

Elgin Berry 3/3/2011
ELGIN L. BERRY LICENSE # 062-057924 EXPIRES 11/30/2011



LOCATION OF SECTION INDICATED THUS: [Black Rectangle]

APPROVED	3/3 20 11
	Elgin Berry COUNTY ENGINEER
PASSED	March 23, 20 11
	Terrence H. Fountain DISTRICT SIX ENGINEER OF LOCAL ROADS & STREETS
PASSED	March 23, 20 11
	Ron Chamba DISTRICT SIX ENGINEER OF CONSTRUCTION
Releasing For Bid Based on Limited Review	March 23, 20 11
	Roger L. Drisko DEPUTY DIRECTOR OF HIGHWAYS, REGION FOUR ENGINEER
	STATE OF ILLINOIS DEPARTMENT OF TRANSPORTATION

SUMMARY OF QUANTITIES

CODE NUMBER	ITEM	UNIT	QUANTITY
40200800	AGGREGATE SURFACE COURSE, TYPE B	TON	174
40600100	BITUMINOUS MATERIALS (PRIME COAT)	GAL	6,869
40600300	AGGREGATE (PRIME COAT)	TON	64
* 40600625	LEVELING BINDER (MACHINE METHOD), N50	TON	1457
40600895	CONSTRUCTING TEST STRIP	EACH	1
40600982	HOT-MIX ASPHALT SURFACE REMOVAL - BUTT JOINT	SQ YD	518
40600990	TEMPORARY RAMP	SQ YD	91
* 40603310	HOT-MIX ASPHALT SURFACE COURSE, MIX "C", N50	TON	2,978
48102100	AGGREGATE WEDGE SHOULDER, TYPE B	TON	1,363
* 60100060	CONCRETE HEADWALLS FOR PIPE DRAINS	EACH	9
60107600	PIPE UNDERDRAINS 4"	FOOT	4,230
60108100	PIPE UNDERDRAINS 4" (SPECIAL)	FOOT	72
67100100	MOBILIZATION	L SUM	1
* X7010216	TRAFFIC CONTROL AND PROTECTION, (SPECIAL)	L SUM	1
* 70300100	SHORT-TERM PAVEMENT MARKING	FOOT	3,893
XX006855	COLD IN-PLACE RECYCLING 4"	SQ YD	31,612
XX008526	ENGINEERED ASPHALT EMULSION	GAL	50,400

* SEE SPECIAL PROVISIONS

CONSTRUCTION TYPE CODE: (1000) 0004

GENERAL NOTES

- THE NOMINAL THICKNESS FOR BASE AND SURFACE COURSES ARE SHOWN ON THE TYPICAL SECTIONS, STANDARDS, SCHEDULES, OR SPECIAL DETAILS. THE CONSTRUCTED THICKNESS OF THE ABOVE ITEMS SHALL NOT BE LESS THAN 90 PERCENT OF THE NOMINAL THICKNESS AT ANY LOCATION.
- THE THICKNESS OF BITUMINOUS MIXTURE SHOWN ON THE PLANS IS THE NOMINAL THICKNESS. DEVIATIONS FROM THE NOMINAL THICKNESS WILL BE PERMITTED WHEN SUCH DEVIATIONS OCCUR DUE TO IRREGULARITIES IN THE EXISTING SURFACE OR BASE ON WHICH THE BITUMINOUS MIXTURE IS PLACED.
- WHERE SECTION OR SUBSECTION MONUMENTS ARE ENCOUNTERED, THE ENGINEER SHALL BE NOTIFIED BEFORE SUCH MONUMENTS ARE REMOVED. THE CONTRACTOR SHALL PROTECT AND CAREFULLY PRESERVE ALL PROPERTY MARKERS AND MONUMENTS UNTIL THE OWNER AND AN AUTHORIZED SURVEYOR OR AGENT, HAS WITNESSED OR OTHERWISE REFERENCED THEIR LOCATION.
- SHORT-TERM PAVEMENT MARKING SHALL BE SUPPLIED BY THE CONTRACTOR AND SHALL CONFORM TO THE SPECIFICATIONS OF SECTION 703. THE TEMPORARY PAVEMENT MARKING AND THE PERMANENT PAVEMENT MARKING SHALL BE DONE BY OTHERS AS SOON AS POSSIBLE AFTER COMPLETION OF THIS PROJECT. COUNTY WILL BE RESPONSIBLE FOR WORK ZONE PAVEMENT MARKING REMOVAL.
- THE NOTED APPLICATION RATES ARE FOR QUANTITY CALCULATIONS ONLY. THE APPLICATION RATE TO BE APPLIED WILL BE DETERMINED BY THE ENGINEER AT THE TIME OF PLACEMENT.
- ALL EXISTING ROAD SIGNS THAT CONFLICT WITH THE PROPOSED WORK ZONE TRAFFIC CONTROL MEASURES SHALL BE REMOVED OR COVERED AS DIRECTED BY THE ENGINEER. THIS WORK WILL NOT BE PAID FOR SEPARATELY BUT SHALL BE CONSIDERED AS PART OF THE CONTRACT AND NO ADDITIONAL COMPENSATION WILL BE ALLOWED.
- IT SHALL BE THE CONTRACTOR'S RESPONSIBILITY TO DETERMINE THE EXACT LOCATION OF ALL UTILITIES AND CARRY OUT HIS OR HER OPERATIONS ACCORDINGLY. ADJUSTMENTS OF UTILITY LOCATIONS SHALL BE MADE BY THE OWNER, UNLESS OTHERWISE NOTED.
- THE CONTRACTOR SHALL BE RESPONSIBLE TO MAKE SURE THAT ANY UTILITY ADJUSTMENTS OR REMOVAL HAS BEEN COMPLETED PRIOR TO THE BEGINNING OF CONSTRUCTION.
- TRANSITION AT BEGINNING AND END OF IMPROVEMENT, AT SIDE ROADS, AND AT EACH BRIDGE 2'-1/4" IN 50', OR AS DIRECTED BY THE ENGINEER (SEE BUTT - JOINT DETAIL).
- ALL PLAN ELEVATIONS REPRESENT AN ASSUMED DATUM.
- THE CONTRACTOR SHALL KEEP ONE TRAFFIC LANE OPENED AT ALL TIMES. NO OVERNIGHT LANE CLOSURE SHALL BE PERMITTED.

APPLICATION RATES USED IN QUANTITY CALCULATIONS

AGGREGATE SURFACE CSE, TYPE B	2.05 TON / CU. YD.
AGGREGATE SHOULDERS, TYPE B	2.05 TON / CU. YD.
AGGREGATE (PRIME COAT)	2 LBS. / SQ. YD.
BITUMINOUS MATERIALS (PRIME COAT)	0.10 GAL. / SQ. YD.
HOT MIX ASPHALT (SURFACE)	112 LBS. / SQ. YD. / IN.

HOT-MIX ASPHALT MIXTURE REQUIREMENTS

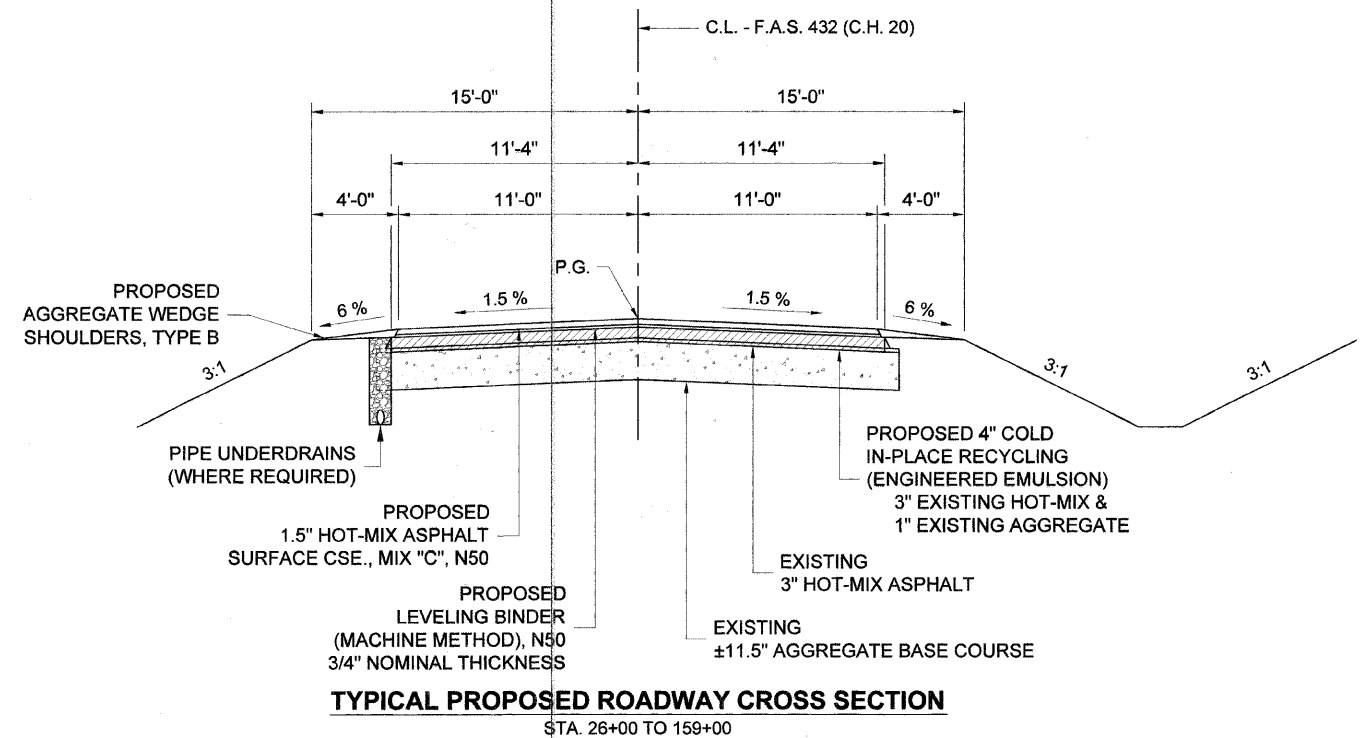
ITEM	AGGREGATE COMPOSITION	ASPHALT GRADE	VOIDS
LEVELING BINDER (MACHINE METHOD), N50	IL 9.5 or 12.5	PG 64-22	4.0% @ N50
HOT-MIX ASPHALT SURFACE COURSE	IL 9.5 or 12.5 Mix "C"	PG 64-22	4.0% @ N50

NOTE: AGGREGATE WEDGE SHOULDERS CALCULATED AT 2" THICK.

ROAD QUANTITIES

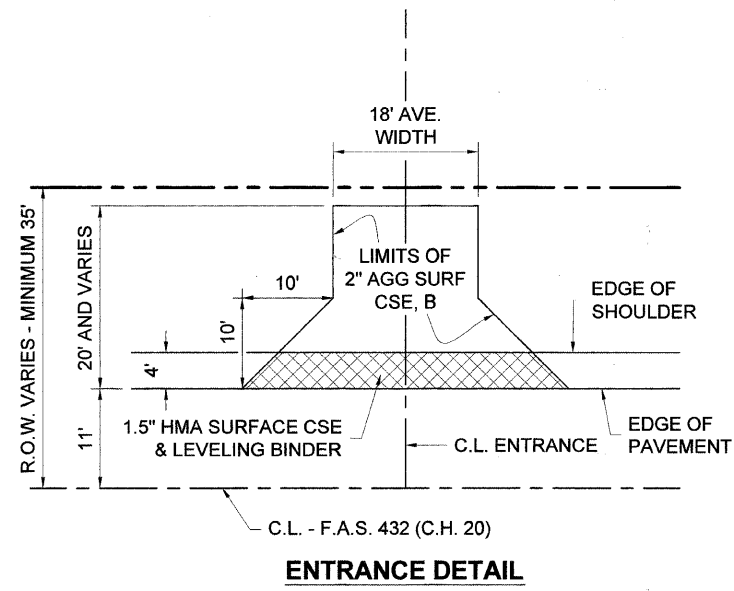
LOCATION	AGG SURF CSE B TON	BIT MATLS PR CT GALLON	AGG PR COAT TON	LEV BIND MM N50 TON	HMA SC "C" N50 TON	AGG WEDGE SHLD TYPE B TON	HMA SURF REM BUTT JT SY	TEMP RAMP SY	COLD IN-PLACE RECYC 4" SY	ENGINEER ASPHALT EMULSION GAL
ROADWAY STA. 26+00 TO STA. 159+00		6,459	64	1,358	2,731	1,363			31,612	50,400
7 HMA BUTT - JOINT TRANSITIONS		126		21	77		518	91		
36 ENTRANCES	144	72		36	72					
7 MAILBOX TURNOUTS		14			14					
6 SIDE ROADS	30	198		42	84					
TOTALS	174	6,869	64	1,457	2,978	1,363	518	91	31,612	50,400

ROUTE NO.	SECTION	COUNTY	TOTAL SHEETS	SHEET NO.
F.A.S. 432 C.H. 20	07-00057-02-RS	HANCOCK	8	2
FHWA REG. NO. 4		ILLINOIS	AUGUSTA ROAD	
CONTRACT NO: 93548				



SUMMARY OF QUANTITIES, GENERAL NOTES, & TYPICAL CROSS SECTION

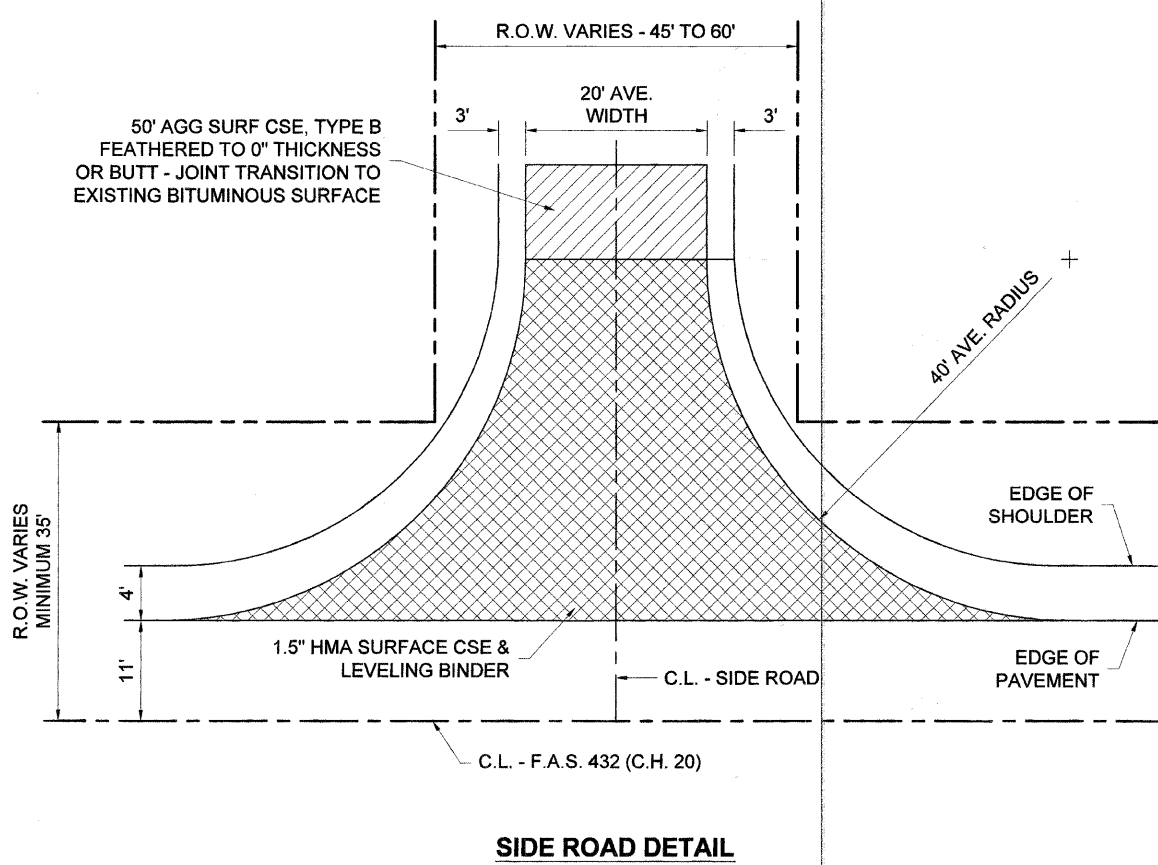
SECTION 07-00057-02-RS
F.A.S. 432 (C.H. 20)
HANCOCK COUNTY



ENTRANCE DETAIL

ENTRANCE SCHEDULE

LOCATIONS			
STATION	SIDE	STATION	SIDE
26+66 S.R.	RT	111+80	LT
34+36	LT	123+07	LT
36+60	LT	126+19	LT
36+60	RT	126+43	LT
47+10	RT	133+88	LT
52+00	LT	135+92	RT
59+93	RT	136+28	LT
60+85	RT	143+16	LT
61+45	RT	143+40	RT
66+74	RT	146+03	LT
67+51	RT	146+56	LT
69+87	RT	153+77	RT
71+62	RT	154+50	RT
75+82	LT	154+79	LT
82+43	LT	155+05	LT
84+48	RT	155+82	RT
87+48	RT	156+70	LT
104+40	RT	158+57	LT
36 ENTRANCES			
MATERIALS PER ENTRANCE			
AGG SURF CSE B	4 TON		
LEV BIND MM N50	1 TON		
BIT MATLS PR CT	2 GAL		
HMA SC "C" N50	2 TON		



SIDE ROAD DETAIL

SIDE ROAD SCHEDULE

LOCATIONS		
STATION	SIDE	SURFACE
26+66	RT	BITUMINOUS
29+87	RT	BITUMINOUS
54+43	RT	BITUMINOUS
55+35	LT	AGGREGATE
119+50	RT	AGGREGATE
119+72	LT	BITUMINOUS
6 SIDE ROADS		
MATERIALS PER SIDEROAD		
BIT MATLS PR CT	33 GAL	
LEV BIND MM N50	7 TON	
HMA SC "C" N50	14 TON	
AGG SURF CSE B	15 TON	
* AGG SURF CSE B - SIDEROADS ONLY		

MAILBOX TURNOUT SCHEDULE

LOCATIONS			
STATION	SIDE	STATION	SIDE
59+84	LT	120+41	LT
66+96	LT	155+54	LT
71+72	LT	157+14	LT
84+71	LT		
7 MAILBOX TURNOUTS			
MATERIALS PER MAILBOX TURNOUT			
BIT MATLS PR CT	2 GAL		
HMA SC "C" N50	2 TON		

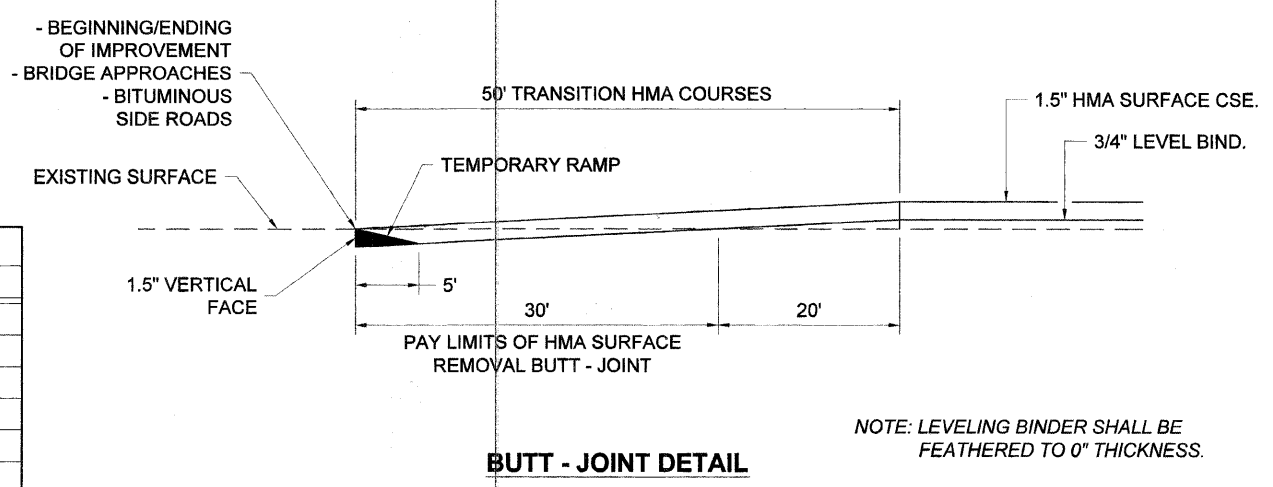
NOTE: SEE STANDARD B.L.R. 24-2 FOR DETAILS

SUB-SURFACE DRAINAGE PLAN

LOCATIONS		PIPE UNDERDRAINS 4"	PIPE UNDERDRAINS 4" (SPECIAL)	CONCRETE HEADWALLS FOR PIPE DRAINS
STATION	SIDE			
48+50 TO 61+50	RT	1,300'		
84+00 TO 98+30	RT	1,430'		
100+00 TO 105+00	RT	500'		
146+00 TO 156+00	RT	1,000'		
48+50	RT		8'	SINGLE
56+50	RT		8'	SINGLE
61+50	RT		8'	SINGLE
89+00	RT		8'	SINGLE
94+00	RT		8'	SINGLE
98+30	RT		8'	SINGLE
100+00	RT		8'	SINGLE
146+00	RT		8'	SINGLE
156+00	RT		8'	SINGLE
TOTALS		4,230'	72'	9 EACH

BUTT - JOINT SCHEDULE

LOCATIONS			
STATION	SIDE	STATION	SIDE
26+00	C.L.	99+44.70	C.L.
26+66	RT	119+72	LT
54+43	RT	159+00	C.L.
98+43.70	C.L.		
7 BUTT - JOINTS			
MATERIALS PER BUTT - JOINT			
BIT MATLS PR CT	18 GAL		
LEV BIND MM N50	3 TON		
HMA SC "C" N50	11 TON		
HMA SURF REM BUTT JT	74 SY		
TEMPORARY RAMP	13 SY		



BUTT - JOINT DETAIL

NOTE: LEVELING BINDER SHALL BE FEATHERED TO 0" THICKNESS.

BUTT - JOINT, ENTRANCE, MAILBOX TURNOUT, & SIDE ROAD DETAILS
SECTION 07-00057-02-RS
F.A.S. 432 (C.H. 20)
HANCOCK COUNTY

SECTION 35, T. 3 N., R. 5 W., 4th P.M.

ROUTE NO.	SECTION	COUNTY	TOTAL SHEETS	SHEET NO.
F.A.S. 432	07-00057-02-RS	HANCOCK	8	4
F.H.W.A. REG. NO. 4		ILLINOIS	AUGUSTA ROAD	
CONTRACT NO. 93548				

PHILLIP & ROBERT STIENBARGER

PHILLIP & ROBERT STIENBARGER

KEITH J. & ANITA J. MARLOW

CLAYTON-CAMP POINT WATER COMMISSION OF ADAMS COUNTY

KEITH J. & ANITA J. MARLOW

GARY D. & JANET S. JANSSEN

IMPROVEMENT BEGINS STA. 26+00

P.I. STA. 36+50.82
Δ = 00° 40' 00" RT.

MATCH EXISTING SUPER-ELEVATION

TRANSITION AREA SEE SHEET #3 BUTT - JOINT DETAIL

RECYCLING BEGINS STA. 32+00

EDGE OF ROAD

C.L. - F.A.S. 432

EXISTING R.O.W.

MATCHLINE STA. 50+00

CURVE DATA

P.I. STA. 27+68.62
Δ = 56° 22' 51" LT.
T = 408.51'
R = 782.17'
L = 750.00'
E = 102.57'
P.C. STA. 23+60.11
P.T. STA. 31+10.11
S.E. = 8.0%
S.E. TRANS. =
STA. 30+46.11 TO 32+38.11

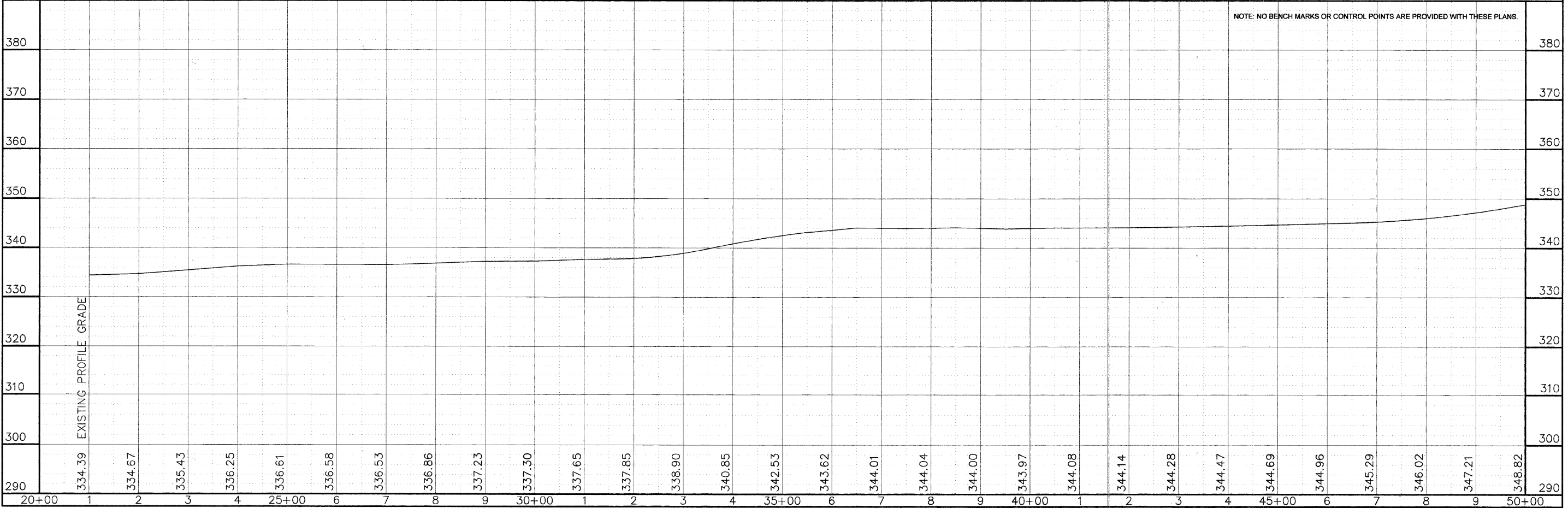
MOORE, STEVENS, & DOWNING

SECTION 35, T. 3 N., R. 5 W., 4th P.M.

ALAN PATTERSON

SCALES:
1" = 100' HOR
1" = 10' VER

NOTE: NO BENCH MARKS OR CONTROL POINTS ARE PROVIDED WITH THESE PLANS.



SECTION 35, T. 3 N., R. 5 W., 4th P.M.

ROUTE NO.	SECTION	COUNTY	TOTAL SHEETS	SHEET NO.
F.A.S. 432 C.H. 20	07-00057-02-RS	HANCOCK	8	5
F.H.W.A. REG. NO. 4		ILLINOIS	AUGUSTA ROAD	
CONTRACT NO: 93548				

PHILLIP & ROBERT
STIENBARGER

PHILLIP & ROBERT
STIENBARGER

GEORGE W. VANCE

CURVE DATA

P.I. STA. 51+21.69
 $\Delta = 46^\circ 57' 40''$ LT.
 T = 331.86'
 R = 763.94'
 L = 626.15'
 E = 68.97'
 P.C. STA. 47+89.83
 P.T. STA. 54+15.98
 S.E. = 8.0%
 S.E. TRANS. =
 STA. 46+61.83 TO 48+53.83
 STA. 53+16.80 TO 55+08.80

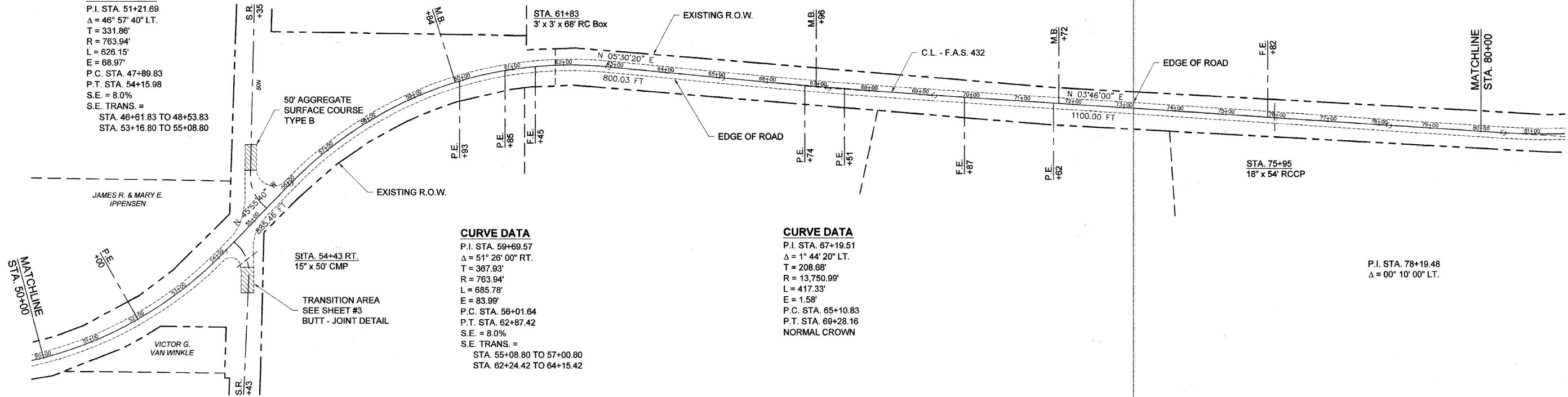
CURVE DATA

P.I. STA. 59+69.57
 $\Delta = 51^\circ 28' 00''$ RT.
 T = 367.93'
 R = 763.94'
 L = 685.78'
 E = 83.99'
 P.C. STA. 56+01.64
 P.T. STA. 62+87.42
 S.E. = 8.0%
 S.E. TRANS. =
 STA. 55+08.80 TO 57+00.80
 STA. 62+24.42 TO 64+15.42

CURVE DATA

P.I. STA. 67+19.51
 $\Delta = 1^\circ 44' 20''$ LT.
 T = 208.68'
 R = 13,750.99'
 L = 417.33'
 E = 1.58'
 P.C. STA. 65+10.83
 P.T. STA. 69+28.16
 NORMAL CROWN

P.I. STA. 78+19.48
 $\Delta = 00^\circ 10' 00''$ LT.



SCALES:
 1" = 100' HOR
 1" = 10' VER

ALAN PATTERSON

JASON H. WEST

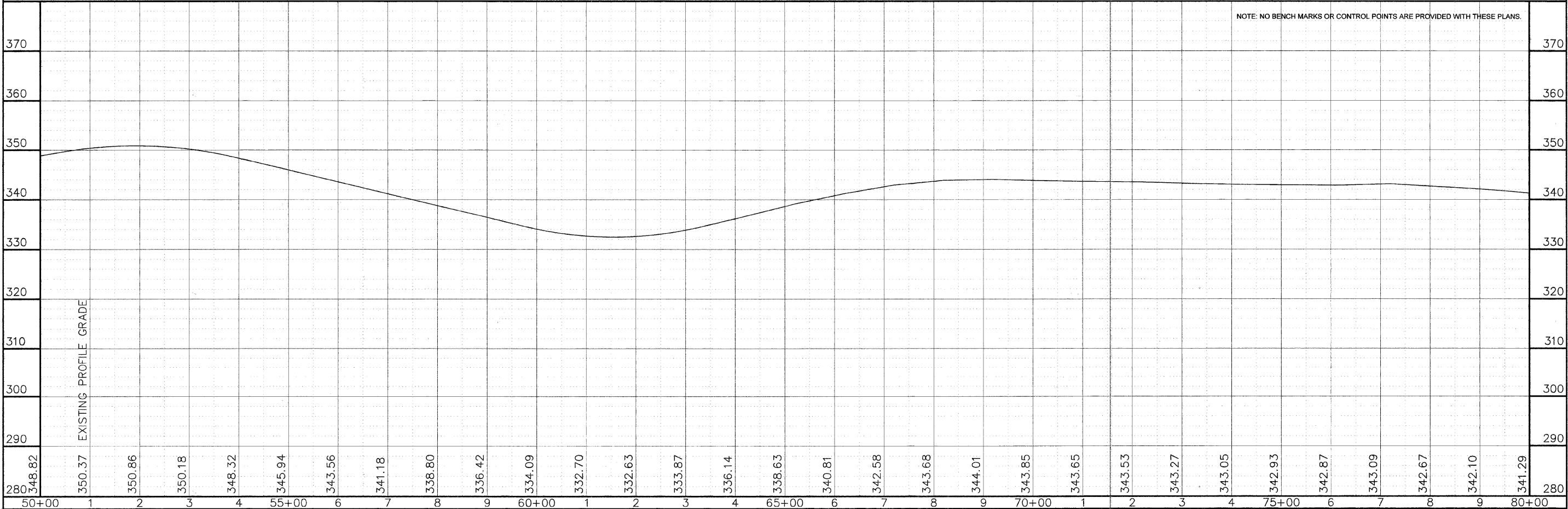
GARY L. &
BARBARA KAY MELVIN

LANCE HILAND

AARON F. & JOYCE M.
MILLER

SECTION 35, T. 3 N., R. 5 W., 4th P.M.

NOTE: NO BENCH MARKS OR CONTROL POINTS ARE PROVIDED WITH THESE PLANS.



SECTION 26, T. 3 N., R. 5 W., 4th P.M.

ROUTE NO.	SECTION	COUNTY	TOTAL SHEETS	SHEET NO.
F.A.S. 432	07-	HANCOCK	8	6
C.H. 20	00057-			
	02-RS			
FHWA REG. NO. 4		ILLINOIS	AUGUSTA ROAD	
CONTRACT NO: 93548				

FREDERICK D. & WILMA A. JANSSEN

STA. 98+94.2 S.N. 034-3201
 3-SPAN CONTINUOUS 24" WF BEAMS
 WITH R.C. DECK SLAB ON R.C. PIERS
 AND PILE BENT ABUTMENTS
 102.0' BK. TO BK. OF ABUTMENTS
 36.5' O. TO O. OF DECK
 34.5' CLEAR ROADWAY
 0° SKEW

BRIDGE OMISSION:
 STA. 98+43.7 TO STA. 99+44.7

CURVE DATA

P.I. STA. 89+46.58
 $\Delta = 70^\circ 42' 00''$ LT.
 T = 903.17'
 R = 1,273.24'
 L = 1,571.11'
 E = 287.81'
 P.C. STA. 80+43.41
 P.T. STA. 96+14.52
 S.E. = 7.0%
 S.E. TRANS. =
 STA. 79+31.41 TO 80+99.41
 STA. 95+58.52 TO 97+26.52

CURVE DATA

P.I. STA. 110+86.53
 $\Delta = 68^\circ 56' 00''$ RT.
 T = 873.98'
 R = 1,273.24'
 L = 1,531.85'
 E = 271.10'
 P.C. STA. 102+12.54
 P.T. STA. 117+44.39
 S.E. = 7.0%
 S.E. TRANS. =
 STA. 101+00.54 TO 102+68.54
 STA. 116+88.39 TO 118+56.39

SCALES:
 1" = 100' HOR
 1" = 10' VER

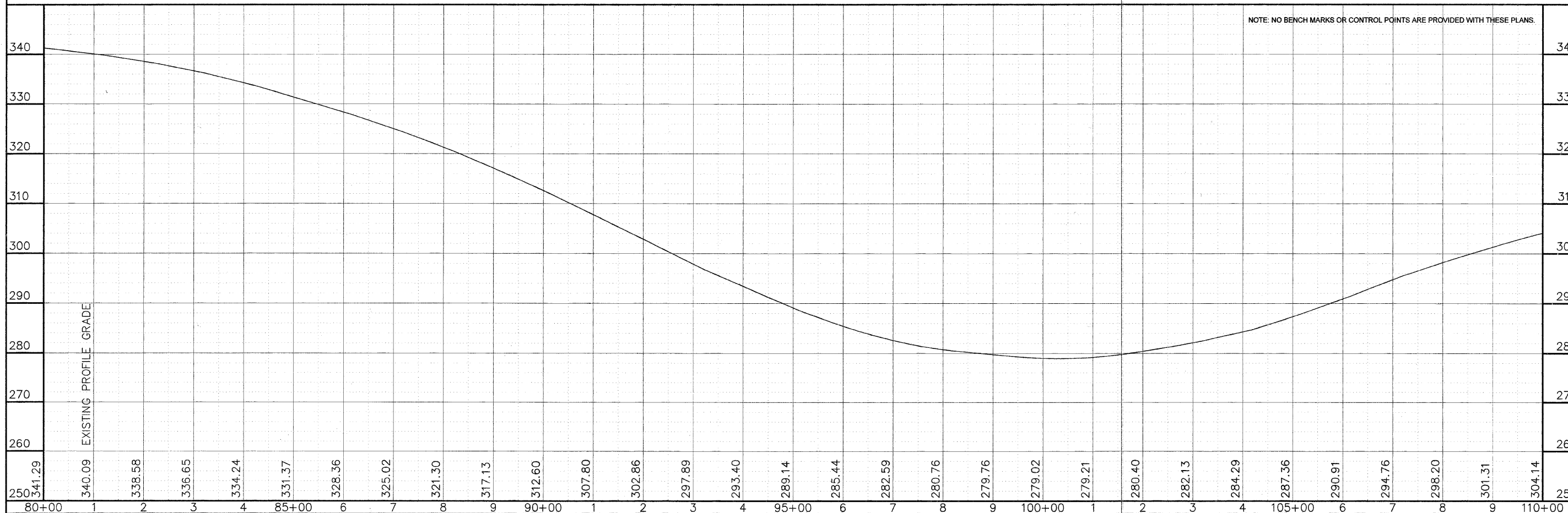
AARON F. & JOYCE M. MILLER

FREDERICK AARON WEINBERG

THOMAS WEINBERG

SECTION 26, T. 3 N., R. 5 W., 4th P.M.

NOTE: NO BENCH MARKS OR CONTROL POINTS ARE PROVIDED WITH THESE PLANS.



SECTION 26, T. 3 N., R. 5 W., 4th P.M.

VELMA H., HELEN A., &
LAWRENCE M. KAUFFMAN

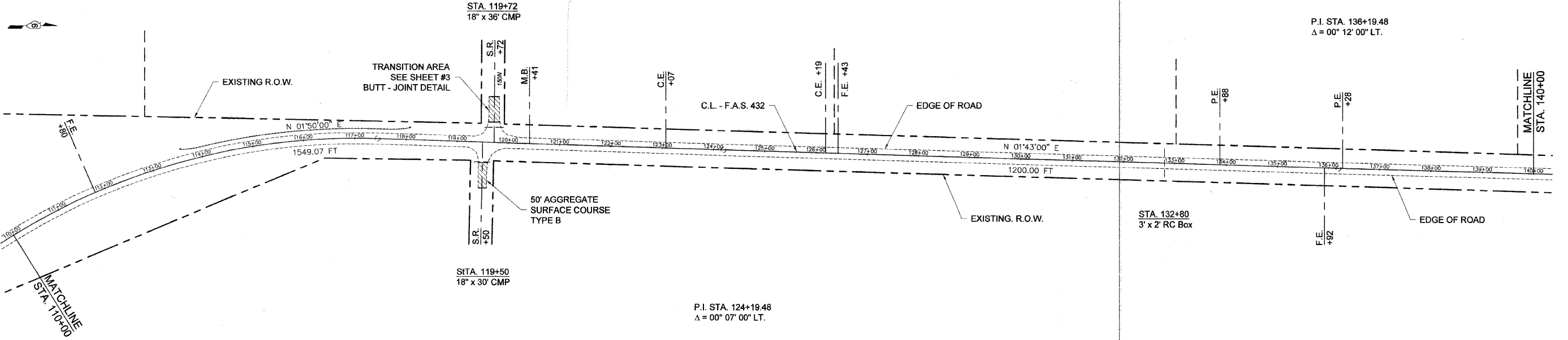
AUGUSTA WOODLAWN
CEMETERY

DONALD &
KATHLEEN E. AGANS

SECTION 27, T. 3 N., R. 5 W., 4th P.M.

DONALD &
KATHLEEN E. AGANS

ROUTE NO.	SECTION	COUNTY	TOTAL SHEETS	SHEET NO.
F.A.S. 432	07-00057-02-RS	HANCOCK	8	7
F.H.W.A. REG. NO. 4		ILLINOIS	AUGUSTA ROAD	
CONTRACT NO: 93548				

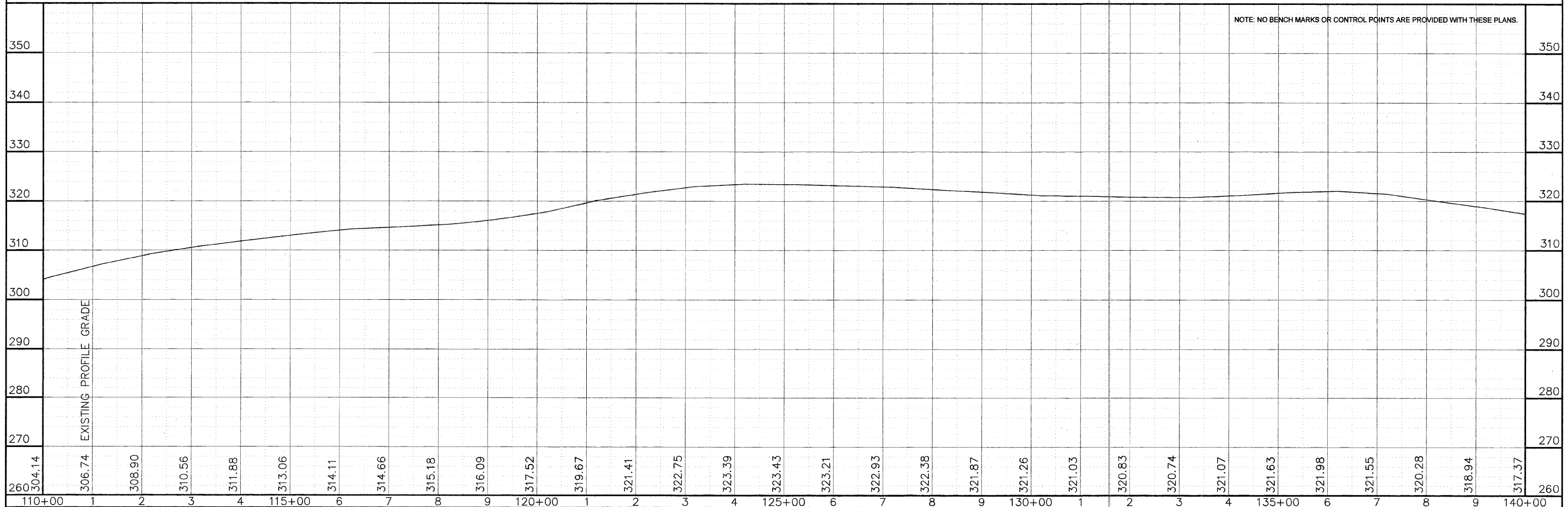


SCALES:
1" = 100' HOR
1" = 10' VER

THOMAS WEINBERG

DAVID A. & KAREN S.
JANSSEN

SECTION 26, T. 3 N., R. 5 W., 4th P.M.



SECTION 27, T. 3 N., R. 5 W., 4th P.M.

FREDERICK WEINBERG

CITY OF AUGUSTA

RONALD M. RANDALL

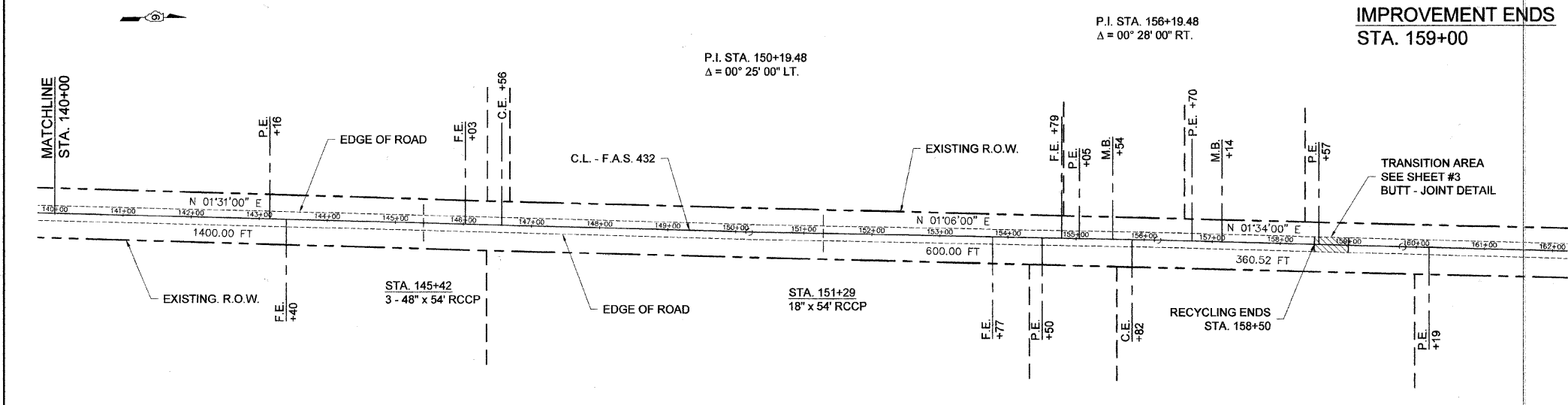
SECTION 22, T. 3 N., R. 5 W., 4th P.M.

BARBARA JEAN HILAND

LORENE TOTSCH

RONALD M. RANDALL

ROUTE NO.	SECTION	COUNTY	TOTAL SHEETS	SHEET NO.
F.A.S. 432	07-00057-02-RS	HANCOCK	8	8
FHWA REG. NO. 4		ILLINOIS	AUGUSTA ROAD	
CONTRACT NO: 93548				



SCALES:
1" = 100' HOR
1" = 10' VER

DAVID A. & KAREN S. JANSSEN

LLOYD W. & JOAN M. ALEXANDER

RICHARD D. MULVANE

LLOYD W. & JOAN M. ALEXANDER

RAMONA J. COLLINS

SECTION 26, T. 3 N., R. 5 W., 4th P.M.

SECTION 23, T. 3 N., R. 5 W., 4th P.M.

NOTE: NO BENCH MARKS OR CONTROL POINTS ARE PROVIDED WITH THESE PLANS.

