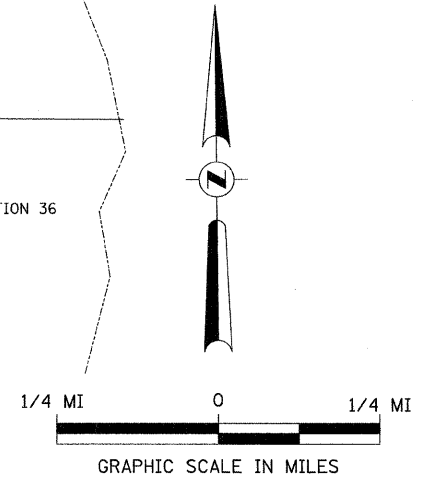


R 6 W, 3rd PM



- 1 ROAD CLOSED  
1 MILE AHEAD  
LOCAL TRAFFIC ONLY  
R11-3
- 2 ROAD CLOSED  
1 1/4 MILES AHEAD  
LOCAL TRAFFIC ONLY  
R11-3
- 3 ROAD CLOSED  
1/2 MILE AHEAD  
LOCAL TRAFFIC ONLY  
R11-3
- 4 ROAD CLOSED  
AHEAD  
W20-3
- 5 ROAD CLOSED  
500 FT  
W20-3
- 6 TYPE III BARRICADES

SEE STANDARD BLR 21  
AND SPECIAL PROVISIONS



FILE NAME = V:\Bridg\2824 - Mason\2824h001.dgn	USER NAME = othomas	DESIGNED -	REVISED -
		DRAWN -	REVISED -
		CHECKED -	REVISED -
		DATE - 03/02/09	REVISED -

**MASON COUNTY  
COUNTY HIGHWAY 19 OVER  
SLEEPY HOLLOW DITCH**

<b>TRAFFIC CONTROL PLAN</b>	
SCALE: NONE	SHEET NO. 1 OF 1 SHEETS
STA. 17+00.00 TO STA. 22+00.00	

F.A.S. RTE.	SECTION	COUNTY	TOTAL SHEETS	SHEET NO.
1595	08-00035-01-BR	MASON	22	4
CONTRACT NO. 93549				
FED. ROAD DIST. NO. 7 ILLINOIS			FED. AID PROJECT BRS-1595(04)	