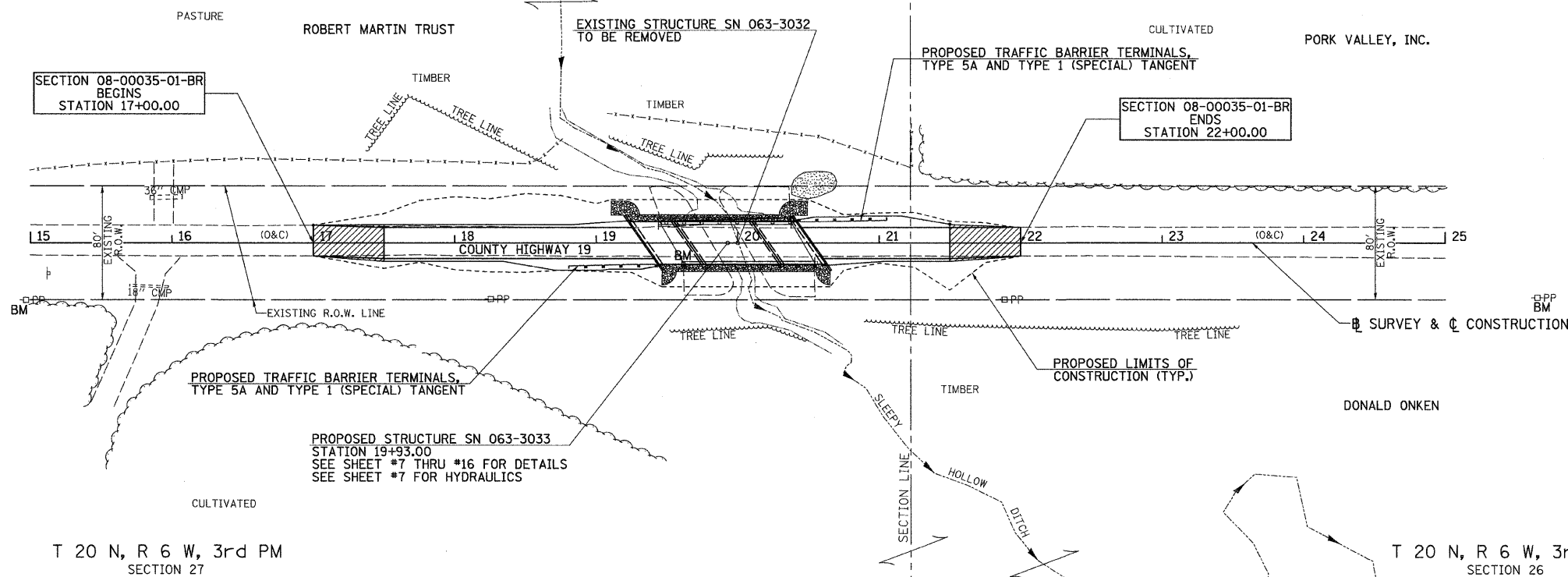
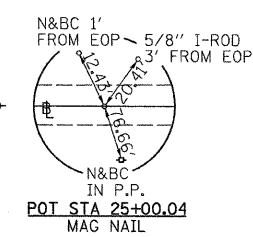


T 20 N, R 6 W, 3rd PM
SECTION 22

T 20 N, R 6 W, 3rd PM
SECTION 23

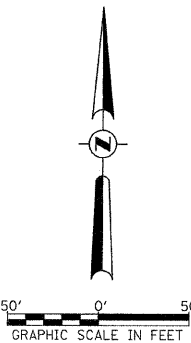


LEGEND

- TRANSITION TO OR FROM EXISTING TO PROPOSED TYPICAL PAVEMENT
- EXISTING RIPRAP
- PROPOSED RIPRAP PLACEMENT

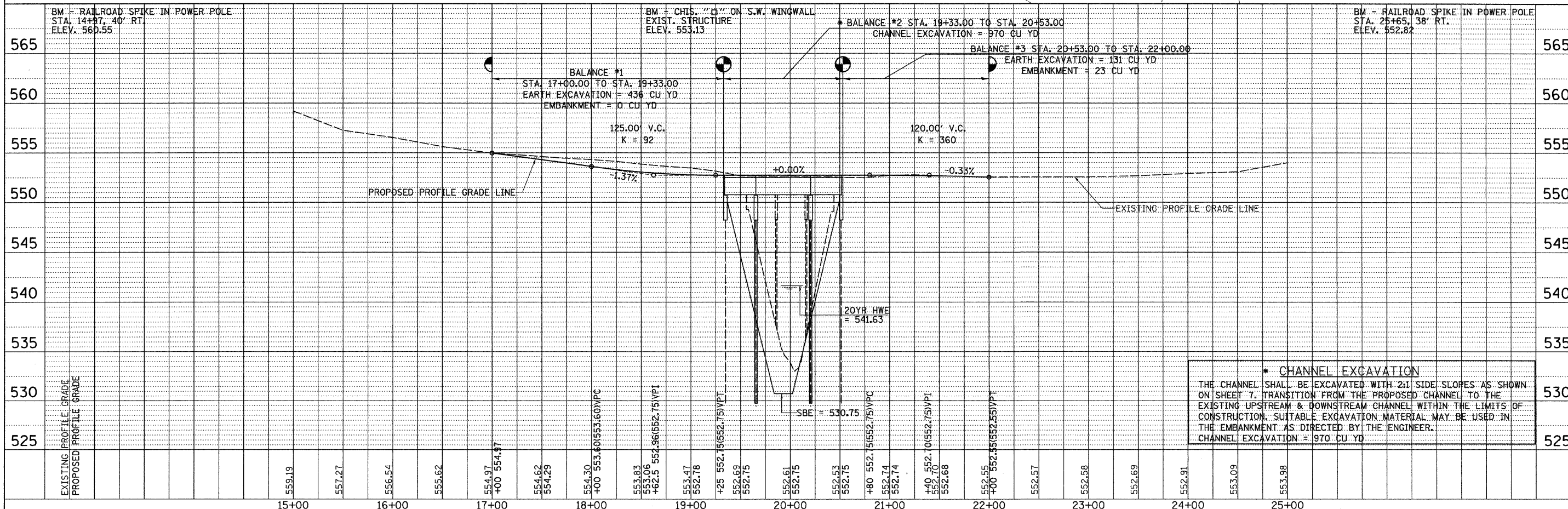
T 20 N, R 6 W, 3rd PM
SECTION 27

T 20 N, R 6 W, 3rd PM
SECTION 26



DATE	
BY	
PLAN	
SURVEYED	
ALIGNED	
CHECKED	
BY	
NOTE BOOK	
NO.	
DATE	

DATE	
BY	
PROFILE	
SURVEYED	
CROSS	
CHECKED	
BY	
NOTE BOOK	
NO.	
DATE	



*** CHANNEL EXCAVATION**
THE CHANNEL SHALL BE EXCAVATED WITH 2:1 SIDE SLOPES AS SHOWN ON SHEET 7. TRANSITION FROM THE PROPOSED CHANNEL TO THE EXISTING UPSTREAM & DOWNSTREAM CHANNEL WITHIN THE LIMITS OF CONSTRUCTION. SUITABLE EXCAVATION MATERIAL MAY BE USED IN THE EMBANKMENT AS DIRECTED BY THE ENGINEER.
CHANNEL EXCAVATION = 970 CU YD

FILE NAME =	USER NAME = cthomas	DESIGNED -	REVISED -	MASON COUNTY COUNTY HIGHWAY 19 OVER SLEEPY HOLLOW DITCH		PLAN AND PROFILE		F.A.S. RTE.	SECTION	COUNTY	TOTAL SHEETS	SHEET NO.
V:\Bridges\2824 - Mason\2824p001.dgn		DRAWN -	REVISED -					1595	08-00035-01-BR	MASON	22	6
		CHECKED -	REVISED -					CONTRACT NO. 93549				
		DATE -	REVISED -					FED. ROAD DIST. NO. 7 [ILLINOIS] FED. AID PROJECT BRS-1595(104)				