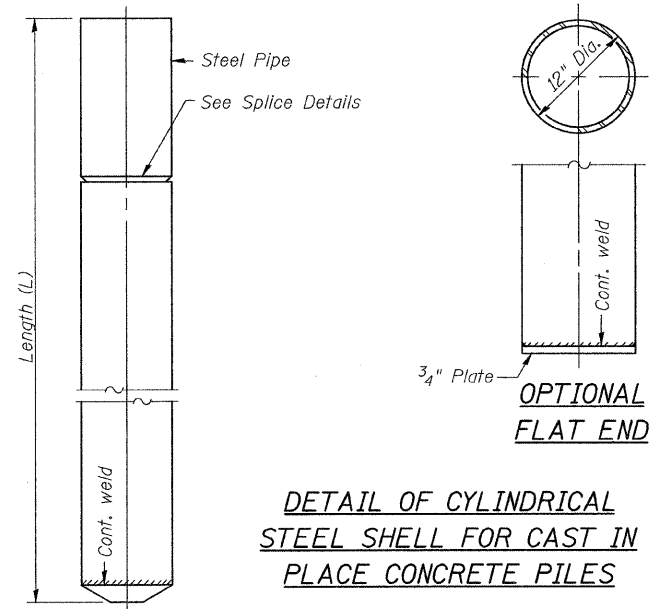
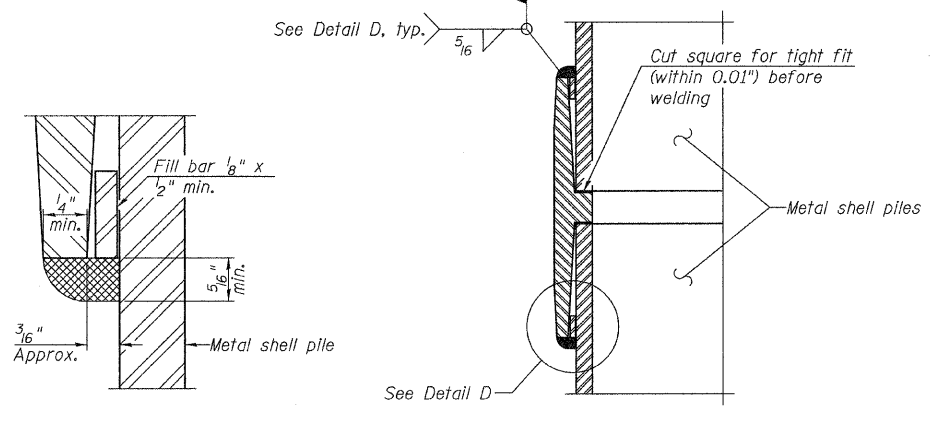


Notes: Driving and bearing ends of pipe shall be cut square. The thickness of the shells shall be 0.25 inches with a tolerance of 5%. The shells shall be according to Article 1006.05(a) of the Standard Specifications, and shall be ASTM A252 Grade 3.



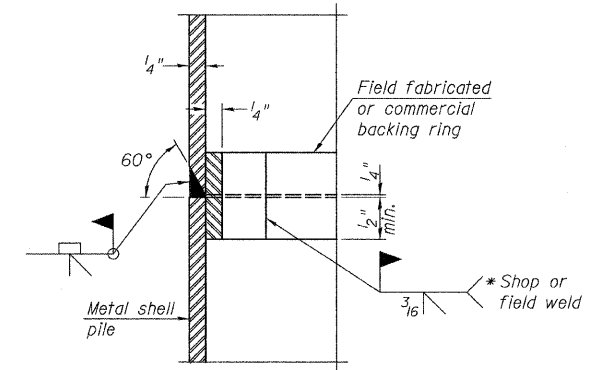
DETAIL OF CYLINDRICAL STEEL SHELL FOR CAST IN PLACE CONCRETE PILES



DETAIL D

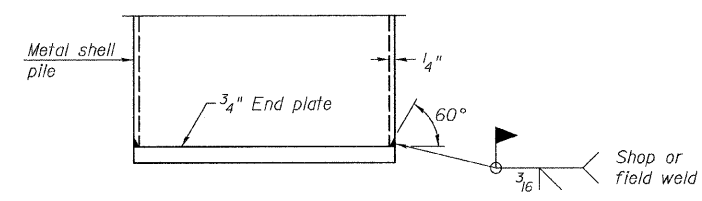
WELDED COMMERCIAL SPLICE

Notes:
The 1/8" x 1/2" min. fill bar may be constructed of 2 bars with a 1/8" max. gap between them.
Pile segments shall be driven to solid contact with splicer before welding.

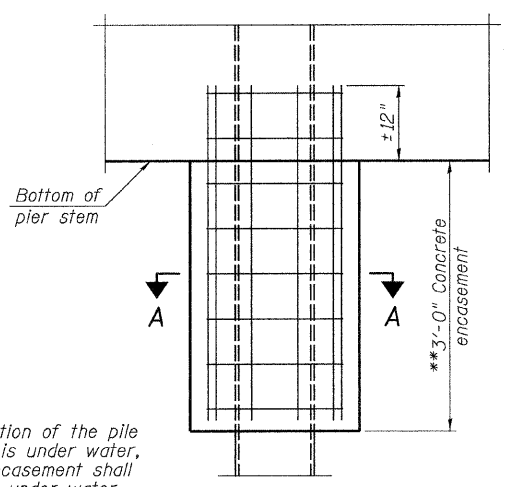


COMPLETE PENETRATION WELD SPLICE

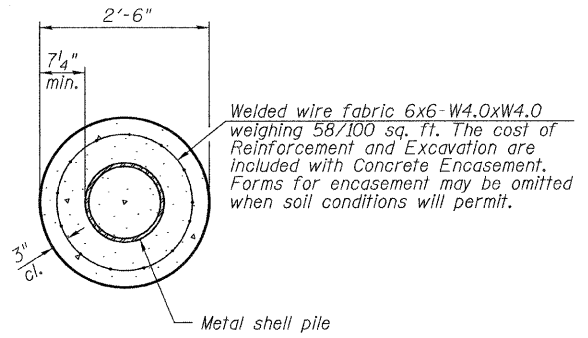
* Field fabricated backing ring may be made from pile shell by removing segment to allow reducing circumference and vertically rejoin with partial joint penetration weld.



END PLATE ATTACHMENT



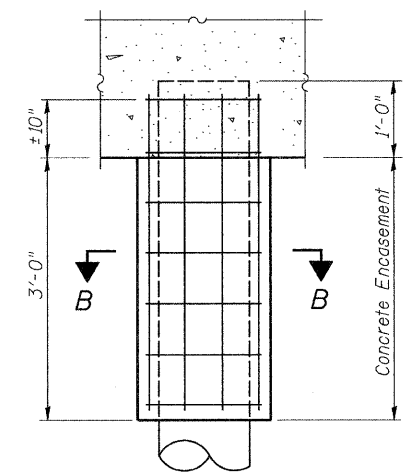
ELEVATION



SECTION A-A

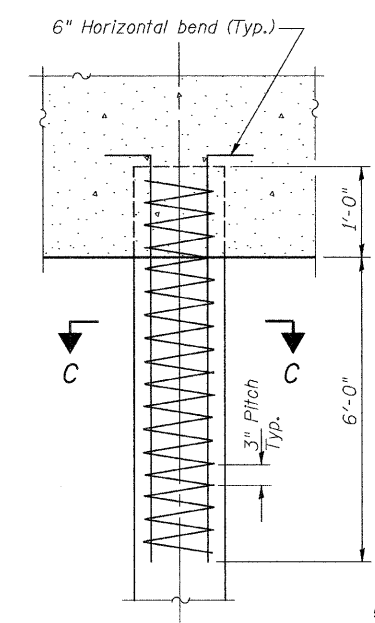
** If a portion of the pile encasement is under water, Concrete Encasement shall be tremmed under water into forms as necessary.

DETAIL OF PROTECTION FOR METAL SHELLS AT PIER



SECTION B-B

DETAIL OF METAL SHELL PILE ENCASEMENT AT ABUTMENTS



SECTION C-C

The cost of Reinforcement is included with Furnishing Metal Shell Piles 12"x0.250".

DETAIL OF REINFORCEMENT FOR METAL SHELLS AT ABUTMENTS

**METAL SHELL PILE DETAILS
MASON COUNTY
SECTION 08-00035-01-BR
C.H. 19 OVER SLEEPY HOLLOW DITCH**

SHEET NO. 10 10 SHEETS	ROUTE NO. CH 19	SECTION 08-00035-01-BR	COUNTY MASON	TOTAL SHEETS 22	SHEET NO. 16
	S.N. 063-3033		CONTRACT NO. 93549		
FED. ROAD DIST. NO. 7 ILLINOIS			FED. AID PROJECT BRS-1595(104)		