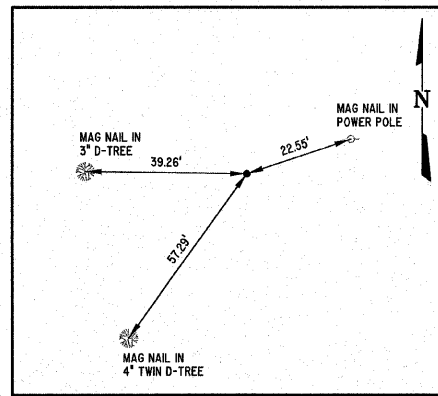
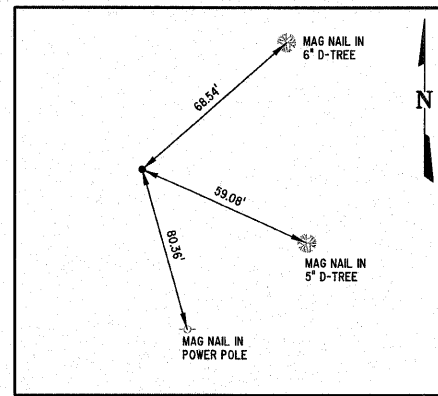


ROUTE NO.	SECTION	COUNTY	TOTAL SHEETS	SHEET NO.
FAU 8390	04-00084-01-PV	EFFINGHAM	139	20
FED. ROAD DIST. NO. 7		ILLINOIS		

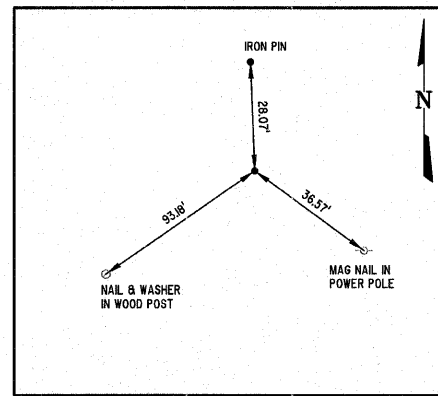
CONTRACT #95639



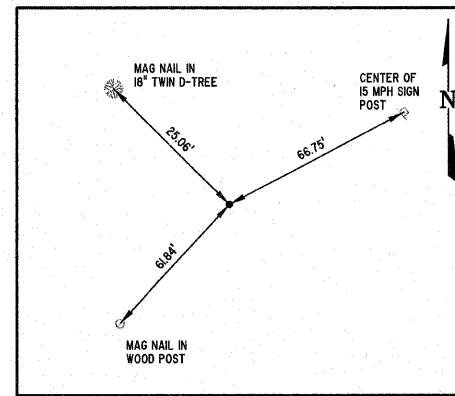
P.I. STA. 203+75.99
1/2" IRON PIN
(LOWER TOWNSHIP ROAD)



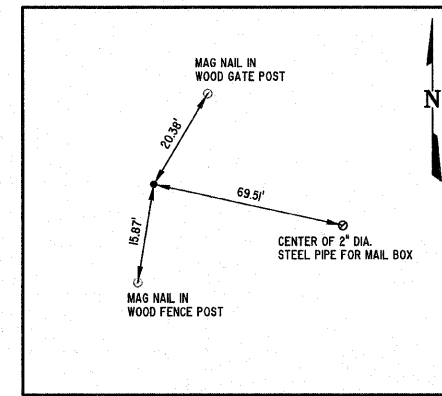
P.O.T. STA. 206+60.00
1/2" IRON PIN
(LOWER TOWNSHIP ROAD)



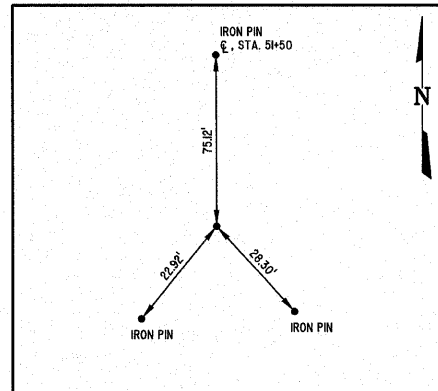
P.I. STA. 212+01.09
1/2" IRON PIN
(UPPER TOWNSHIP ROAD)



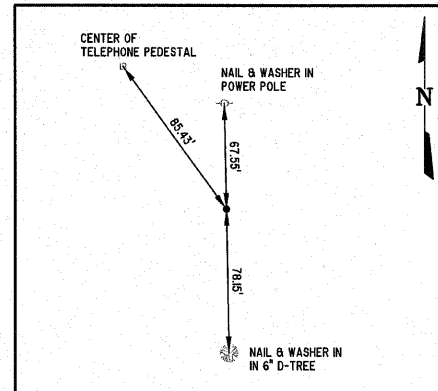
P.I. STA. 214+13.99
1/2" IRON PIN
(UPPER TOWNSHIP ROAD)



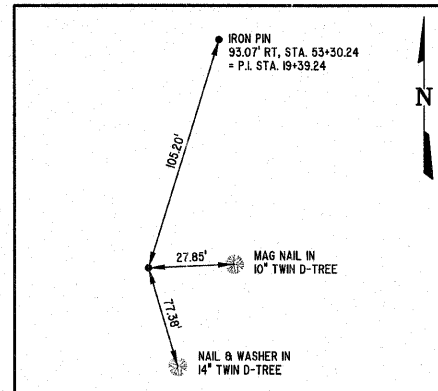
P.O.T. STA. 215+00.00
NAIL & WASHER
(UPPER TOWNSHIP ROAD)



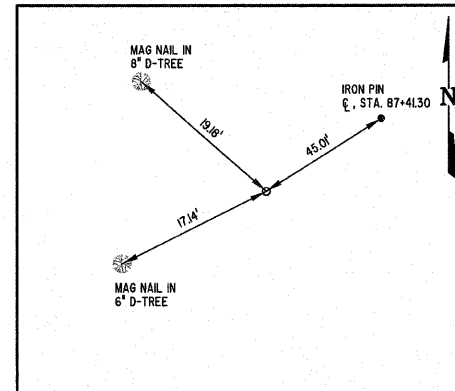
P.I. STA. 17+75.05
1/2" IRON PIN
(WILLENBORG ACCESS)



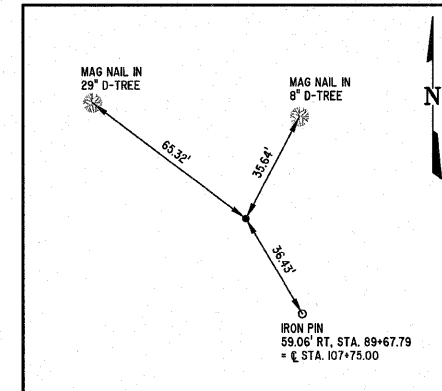
P.I. STA. 19+39.24
1/2" IRON PIN
(WILLENBORG ACCESS)



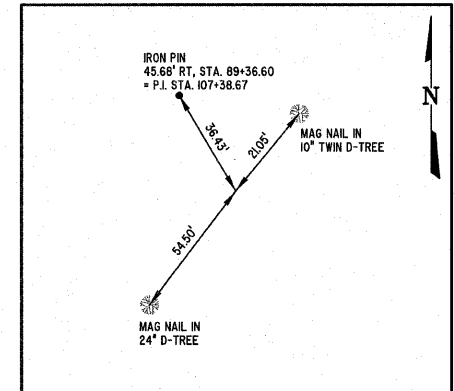
P.O.T. STA. 20+10.00
1/2" IRON PIN
(WILLENBORG ACCESS)



P.I. STA. 105+45.00
1/2" IRON PIN
(LSAWC ACCESS)



P.I. STA. 107+38.67
1/2" IRON PIN
(LSAWC ACCESS)



P.O.T. STA. 107+75.00
1/2" IRON PIN
(LSAWC ACCESS)

MILANO & GRUNLOH ENGINEERS, LLC
14 WEST WASHINGTON
P.O. BOX 897
EFFINGHAM, ILLINOIS 62401
Phone: (271) 347-7282
(800) 877-2714
Fax #: (271) 342-3433
Web Address: www.mgengineers.com
Design Firm #: 184-00308

REFERENCE TIES
CENTERLINE - SIDE ROADS AND
ACCESS DRIVES
COUNTY OF EFFINGHAM, ILLINOIS

File name: S:\DWG\05\05227\dwg\Alignment Ties.dwg
Plot date: 02/08/11 at 16:10 P. 866,590