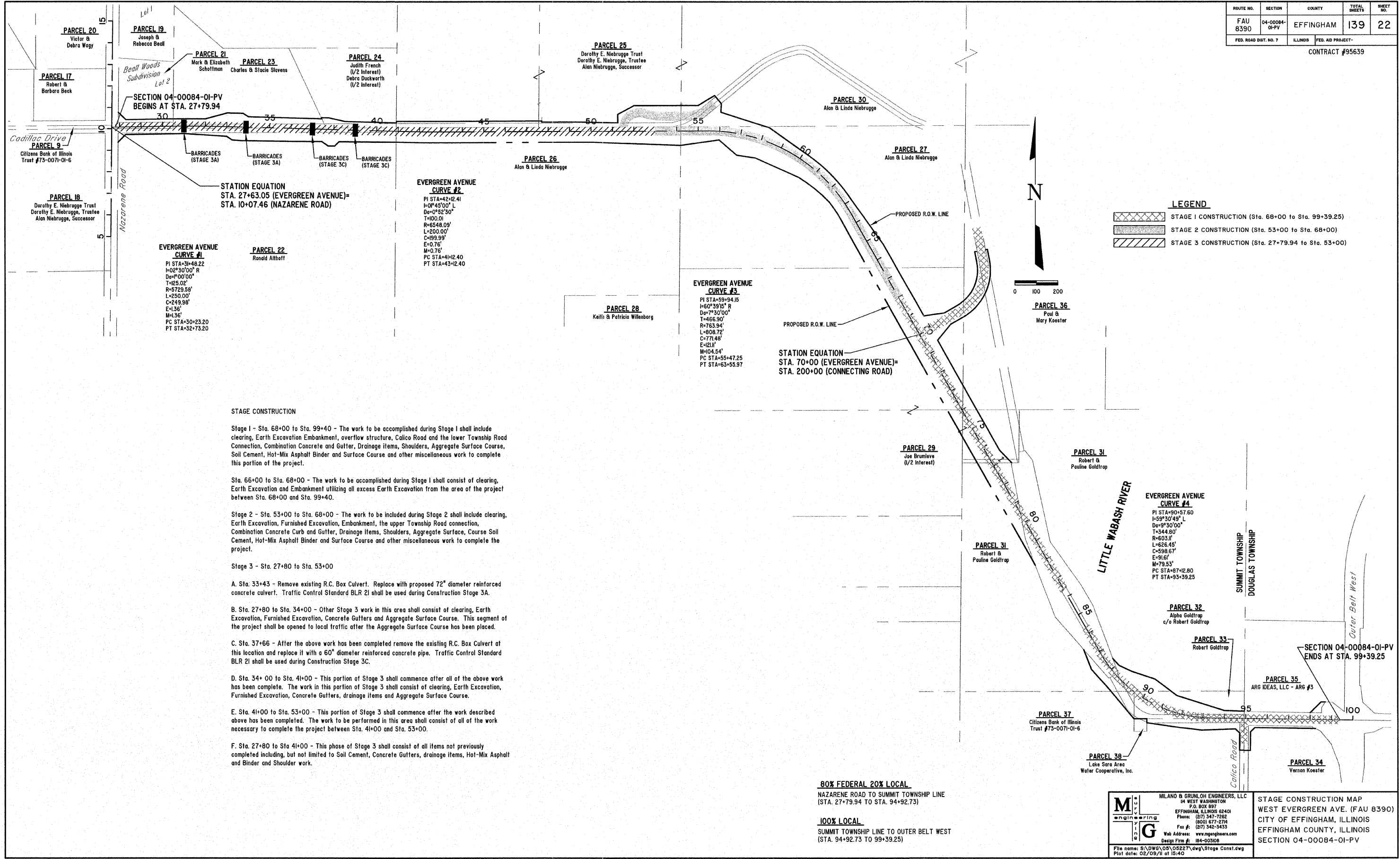


ROUTE NO.	SECTION	COUNTY	TOTAL SHEETS	SHEET NO.
FAU 8390	04-00084-01-PV	EFFINGHAM	139	22
FED. ROAD DIST. NO. 7	ILLINOIS	FED. AID PROJECT-		

CONTRACT #95639



**STAGE CONSTRUCTION**

Stage 1 - Sta. 68+00 to Sta. 99+40 - The work to be accomplished during Stage 1 shall include clearing, Earth Excavation Embankment, overflow structure, Calico Road and the lower Township Road Connection, Combination Concrete and Gutter, Drainage items, Shoulders, Aggregate Surface Course, Soil Cement, Hot-Mix Asphalt Binder and Surface Course and other miscellaneous work to complete this portion of the project.

Sta. 66+00 to Sta. 68+00 - The work to be accomplished during Stage 1 shall consist of clearing, Earth Excavation and Embankment utilizing all excess Earth Excavation from the area of the project between Sta. 68+00 and Sta. 99+40.

Stage 2 - Sta. 53+00 to Sta. 68+00 - The work to be included during Stage 2 shall include clearing, Earth Excavation, Furnished Excavation, Embankment, the upper Township Road connection, Combination Concrete Curb and Gutter, Drainage Items, Shoulders, Aggregate Surface, Course Soil Cement, Hot-Mix Asphalt Binder and Surface Course and other miscellaneous work to complete the project.

Stage 3 - Sta. 27+80 to Sta. 53+00

A. Sta. 33+43 - Remove existing R.C. Box Culvert. Replace with proposed 72" diameter reinforced concrete culvert. Traffic Control Standard BLR 21 shall be used during Construction Stage 3A.

B. Sta. 27+80 to Sta. 34+00 - Other Stage 3 work in this area shall consist of clearing, Earth Excavation, Furnished Excavation, Concrete Gutters and Aggregate Surface Course. This segment of the project shall be opened to local traffic after the Aggregate Surface Course has been placed.

C. Sta. 37+66 - After the above work has been completed remove the existing R.C. Box Culvert at this location and replace it with a 60" diameter reinforced concrete pipe. Traffic Control Standard BLR 21 shall be used during Construction Stage 3C.

D. Sta. 34+00 to Sta. 41+00 - This portion of Stage 3 shall commence after all of the above work has been complete. The work in this portion of Stage 3 shall consist of clearing, Earth Excavation, Furnished Excavation, Concrete Gutters, drainage items and Aggregate Surface Course.

E. Sta. 41+00 to Sta. 53+00 - This portion of Stage 3 shall commence after the work described above has been completed. The work to be performed in this area shall consist of all of the work necessary to complete the project between Sta. 41+00 and Sta. 53+00.

F. Sta. 27+80 to Sta. 41+00 - This phase of Stage 3 shall consist of all items not previously completed including, but not limited to Soil Cement, Concrete Gutters, drainage items, Hot-Mix Asphalt and Binder and Shoulder work.

**80% FEDERAL 20% LOCAL**  
 NAZARENE ROAD TO SUMMIT TOWNSHIP LINE  
 (STA. 27+79.94 TO STA. 94+92.73)

**100% LOCAL**  
 SUMMIT TOWNSHIP LINE TO OUTER BELT WEST  
 (STA. 94+92.73 TO 99+39.25)

**MILANO & GRUNLOH ENGINEERS, LLC**  
 94 WEST WASHINGTON  
 P.O. BOX 897  
 EFFINGHAM, ILLINOIS 62401  
 Phone: (271) 347-7262  
 (800) 577-2714  
 Fax #: (271) 342-3433  
 Web Address: www.mgengineers.com  
 Design Firm #: 184-00308

File name: S:\DWG\05\05227.dwg\Stage Const.dwg  
 Plot date: 02/08/11 at 15:40

STAGE CONSTRUCTION MAP  
 WEST EVERGREEN AVE. (FAU 8390)  
 CITY OF EFFINGHAM, ILLINOIS  
 EFFINGHAM COUNTY, ILLINOIS  
 SECTION 04-00084-01-PV