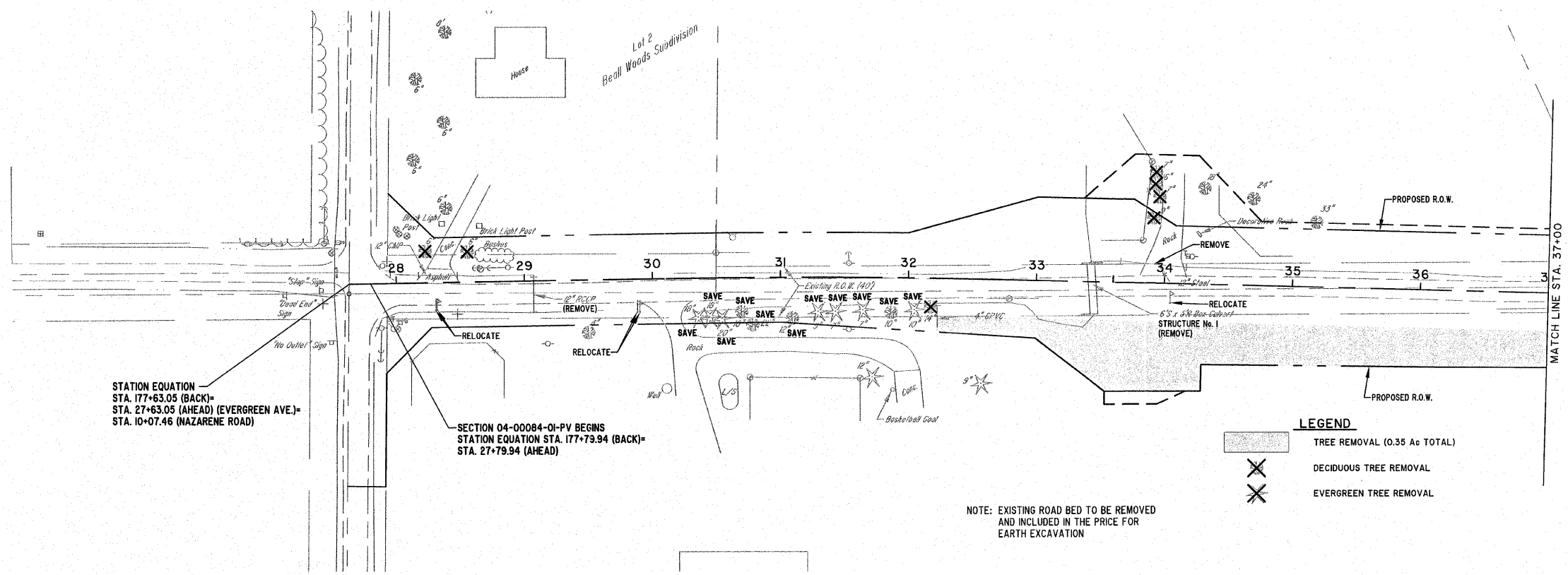


ROUTE NO.	SECTION	COUNTY	TOTAL SHEETS	SHEET NO.
FAU 6390	04-00084-01-PV	EFFINGHAM	139	41
FED. ROAD DIST. NO. 7		ILLINOIS		

CONTRACT #95639

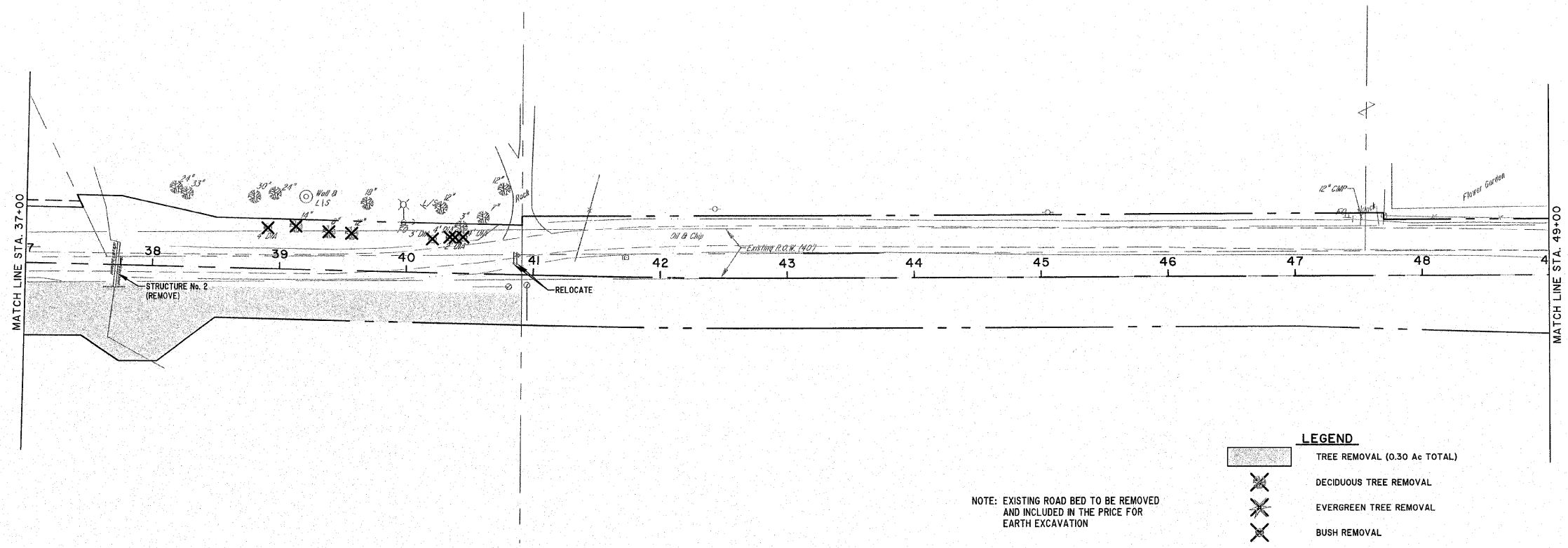


STATION EQUATION
 STA. 177+63.05 (BACK)=
 STA. 27+63.05 (AHEAD) (EVERGREEN AVE.)=
 STA. 10+07.46 (NAZARENE ROAD)

SECTION 04-00084-01-PV BEGINS
 STATION EQUATION STA. 177+79.94 (BACK)=
 STA. 27+79.94 (AHEAD)

LEGEND

	TREE REMOVAL (0.35 A± TOTAL)
	DECIDUOUS TREE REMOVAL
	EVERGREEN TREE REMOVAL



LEGEND

	TREE REMOVAL (0.30 A± TOTAL)
	DECIDUOUS TREE REMOVAL
	EVERGREEN TREE REMOVAL
	BUSH REMOVAL

MILANO & GRUNLOH ENGINEERS, LLC
 84 WEST WASHINGTON
 P.O. BOX 897
 EFFINGHAM, ILLINOIS 62401
 Phone: (217) 347-7282
 (800) 677-2714
 Fax #: (217) 342-3433
 Web Address: www.mgengineers.com
 Design Firm #: 184-003028
 File name: S:\DWG\05_052277.dwg\Removal.dwg
 Plot date: 02/09/11 at 07:50

REMOVAL PLAN
 EVERGREEN AVENUE
 STA. 27+00 TO STA. 49+00
 COUNTY OF EFFINGHAM, ILLINOIS