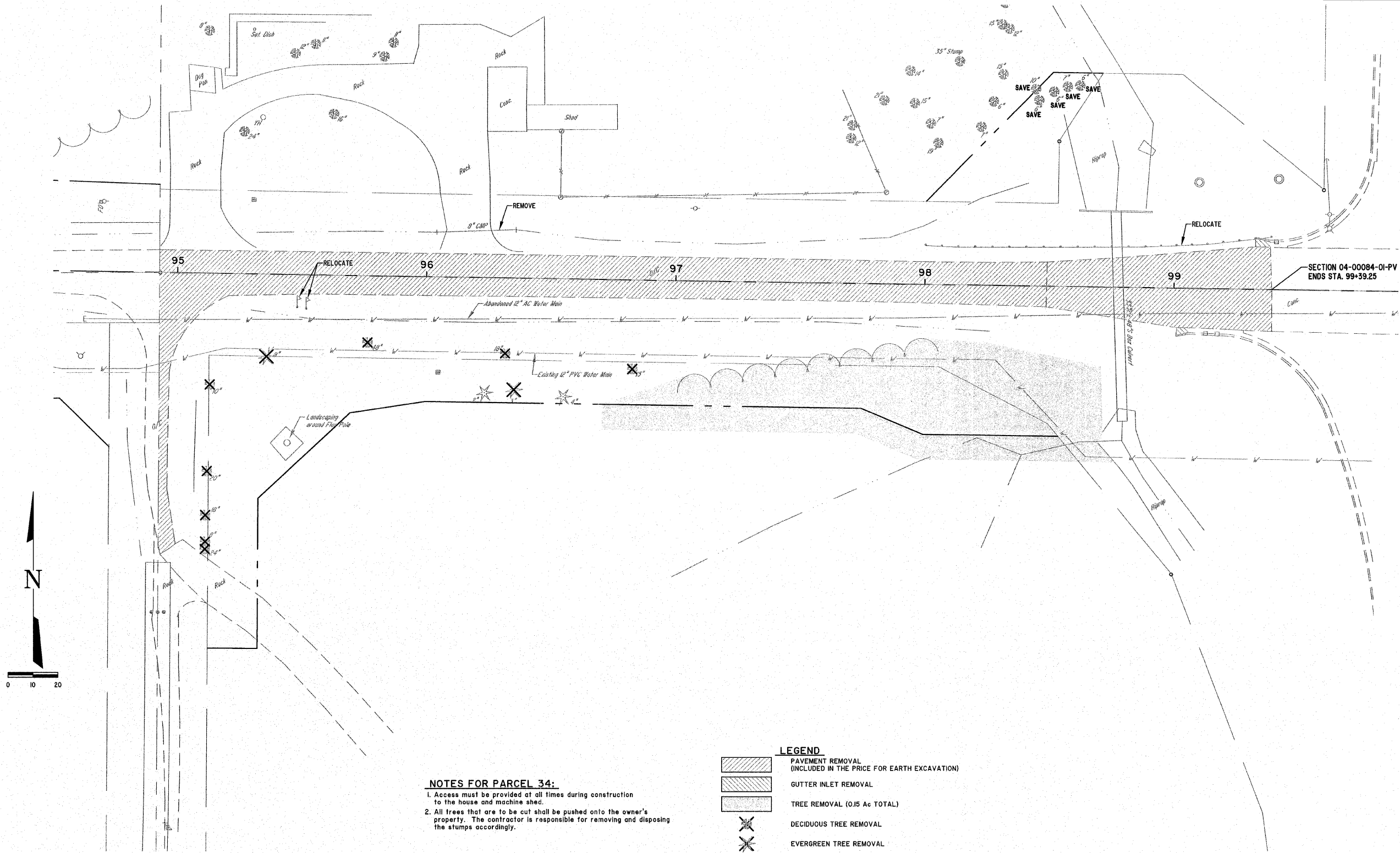


ROUTE NO.	SECTION	COUNTY	TOTAL SHEETS	SHEET NO.
FAU 8390	04-00084-01-PV	EFFINGHAM	139	44
FED. ROAD DIST. NO. 7	ILLINOIS			

CONTRACT #95639



**NOTES FOR PARCEL 34:**  
 1. Access must be provided at all times during construction to the house and machine shed.  
 2. All trees that are to be cut shall be pushed onto the owner's property. The contractor is responsible for removing and disposing the stumps accordingly.

**LEGEND**

	PAVEMENT REMOVAL (INCLUDED IN THE PRICE FOR EARTH EXCAVATION)
	GUTTER INLET REMOVAL
	TREE REMOVAL (0.15 AC TOTAL)
	DECIDUOUS TREE REMOVAL
	EVERGREEN TREE REMOVAL

	MILANO & GRUNLOH ENGINEERS, LLC 94 WEST WASHINGTON P.O. BOX 857 EFFINGHAM, ILLINOIS 62401 Phone: (217) 347-7262 (800) 577-2714 Fax #: (217) 342-3433	<b>REMOVAL PLAN</b> EVERGREEN AVENUE STA. 94+92.73 TO STA. 100+00 CITY OF EFFINGHAM, ILLINOIS COUNTY OF EFFINGHAM, ILLINOIS
	Web Address: <a href="http://www.mgengineers.com">www.mgengineers.com</a>	
	Design Firm #: 164-00308	
	File name: S:\DWG\05_082707\dwg\Removal.dwg Plot date: 02/09/11 at 07:50	