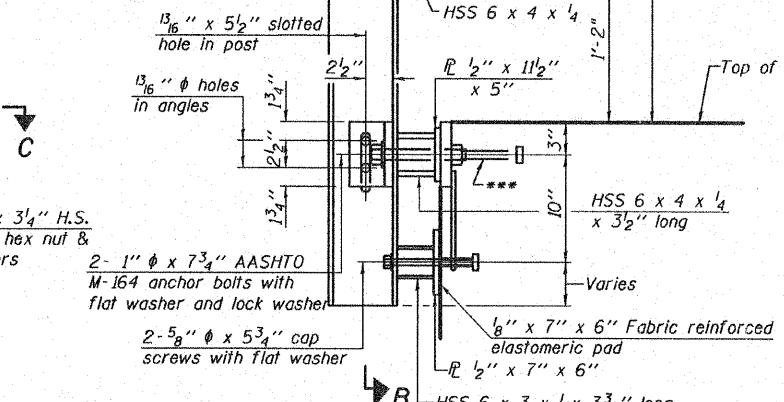
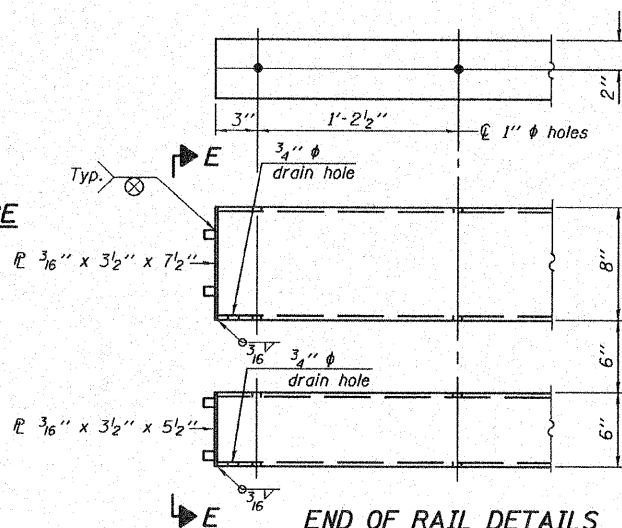
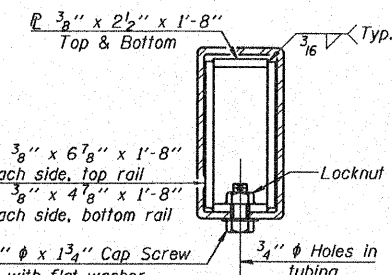
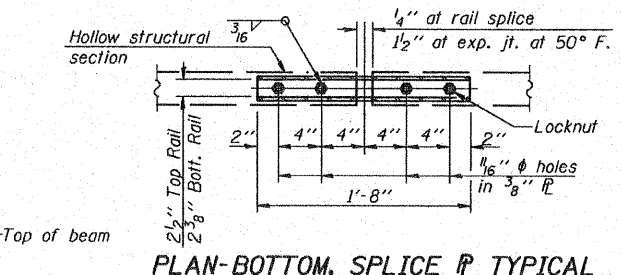


**VIEW A-A**  
 4- 3/4"  $\phi$  x 6" Round Head Bolts (With slot or approved recess in head) with locknut & flat washer. 7/8"  $\phi$  holes in hollow structural section may be drilled in the field.

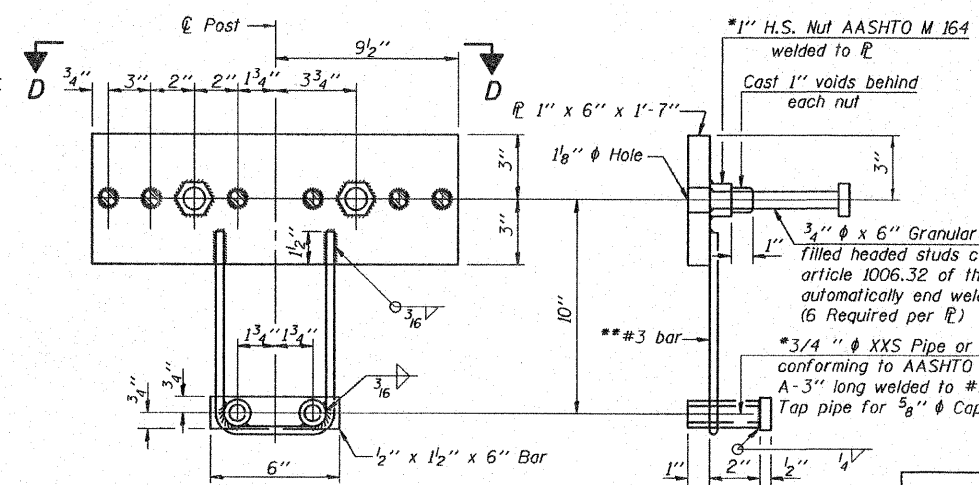
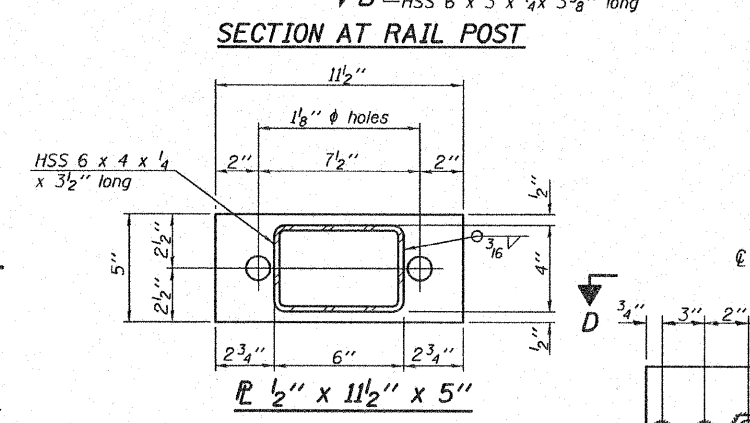
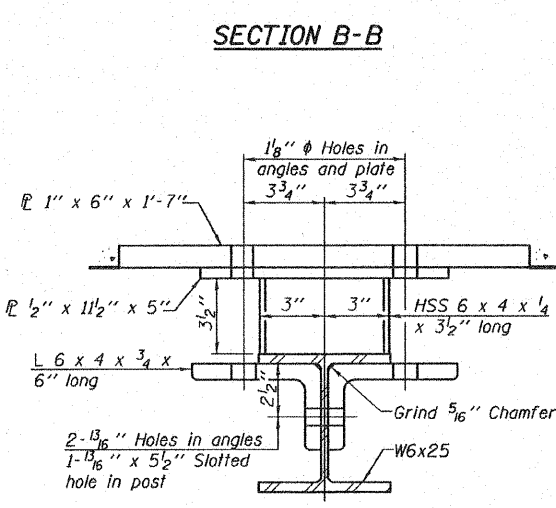


**RAIL SPLICE CONNECTION AT EXPANSION JT.**



**Notes:**  
 All field drilled holes shall be coated with an approved zinc rich paint before erection.  
 For multi-span bridges, sufficient 1/4" x 6" x 1'-2" galvanized steel shims shall be provided to align rail between adjacent spans. Cost included with Steel Railing, Type SM.  
 All steel rail members shall be galvanized according to Article 509.05 of the Standard Specifications.  
 \*\*\*The studs of the anchor devices shall be placed below the top reinforcement bars and the outermost longitudinal reinforcement bar shall be placed directly above the studs of the rail post anchor device.

\*\*Whenever the lower insert assemblies interfere with strand locations, the #3 bars shall be cut and adjusted in order to allow raising or lowering of the lower inserts. Maximum adjustment not to exceed 1/2".



**ANCHOR DEVICE**  
 \*Threaded areas shall be plugged or blocked off during casting of beam. Galvanized after fabrication.

DESIGNED	SCD
CHECKED	DRB
DRAWN	THW
CHECKED	DRB

**R-34HMAWS** 5-16-08 (6'-3" Maximum Post Spacing) (1/4" minimum to 3/8" maximum HMA thickness)

**BILL OF MATERIAL**

Item	Unit	Quantity
Steel Railing, Type SM	Foot	216

See sheet 4 of 7 for Rail Post Spacing.

**STEEL RAILING, TYPE SM  
 STRUCTURE NO. 025-3223**

SHEET NO. 2 of 7 SHEETS	RTE.	SECTION	COUNTY	TOTAL SHEETS	SHEET NO.
	CH 10	04-00084-01-PV	EFFINGHAM	139	57
FED. ROAD DIST. NO. - ILLINOIS FED. AID PROJECT			CONTRACT NO. 95639		