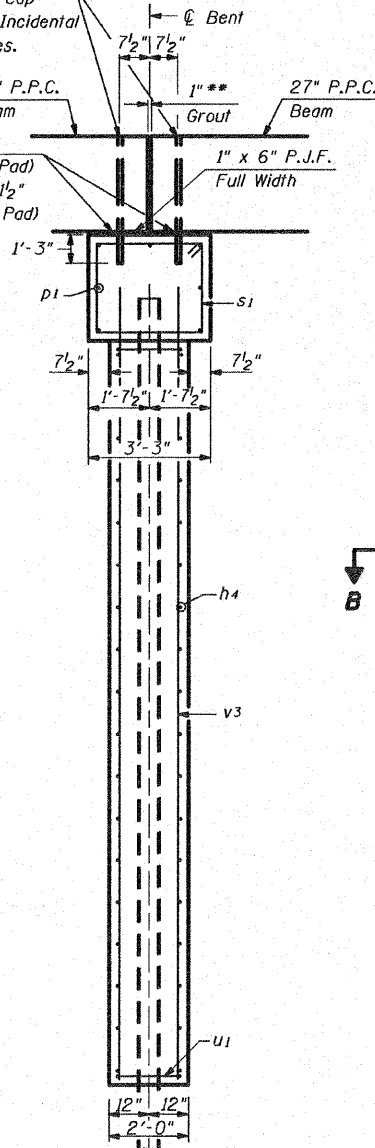


** 1" Joint shall be packed with a very dry mix of 2:1 sand and P.C. mortar. 1" Dimension may Vary plus or Minus to accommodate Tolerance in Beam Lengths.

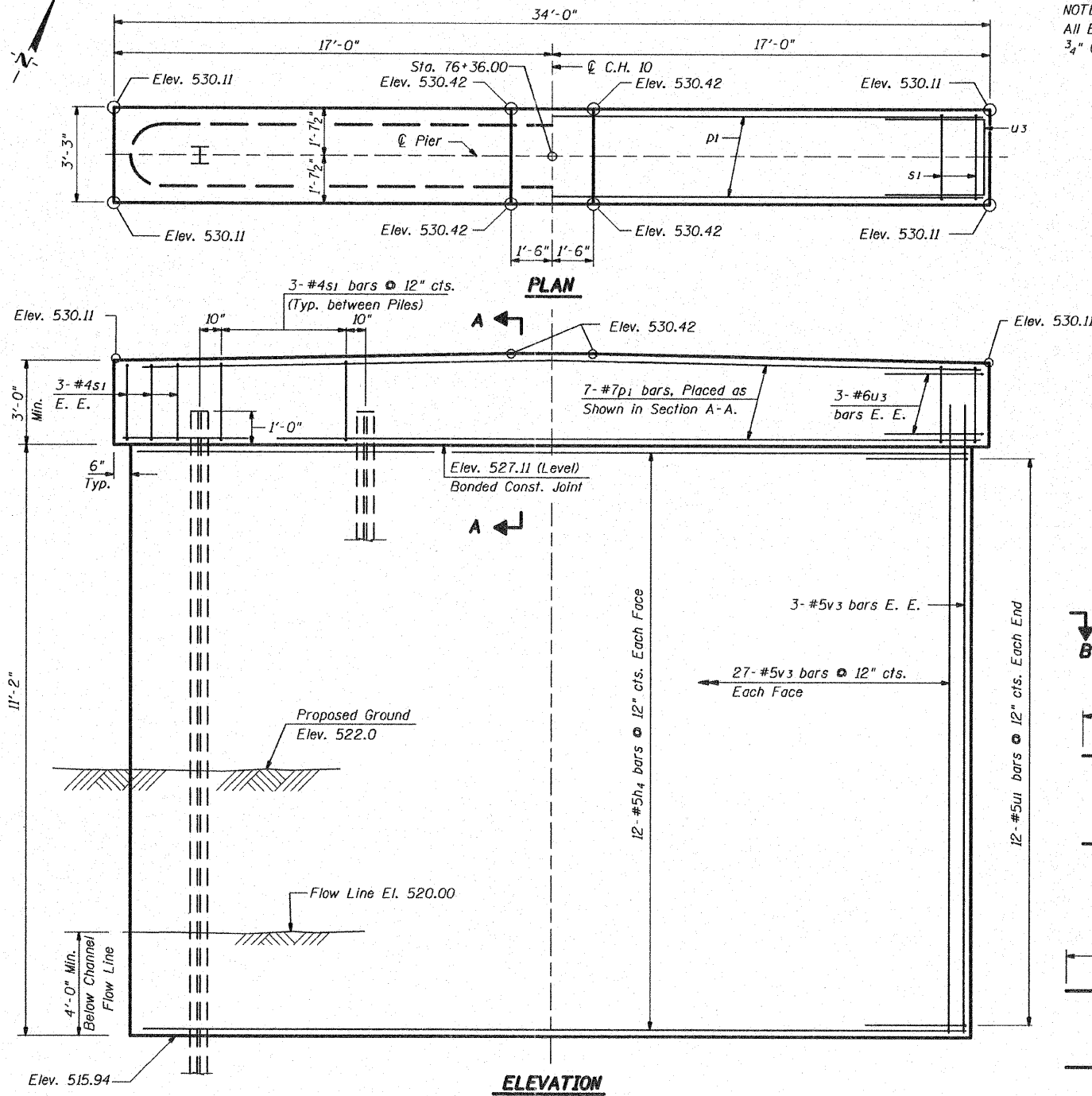
*** Dowel Rods to be grouted after beams are in place and allowed to cure (Min. 24 hours) prior to grouting Shear Keys.

*** 1" ϕ x 2'-6" Dowel Rods in 1/2" ϕ holes drilled in Cap (2 Each Beam) Cost Incidental to Concrete Structures.

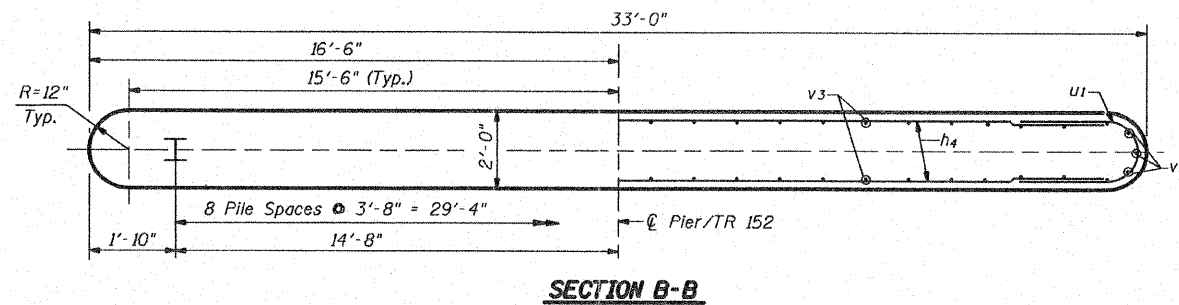
27" P.P.C. Beam
Grout
1" x 6" P.J.F. Full Width
1 - 9" x 1" x 2'-3" (Interior Fabric Brg. Pad) or 1 - 9" x 1" x 1'-1/2" (Exterior Fabric Brg. Pad)



END VIEW

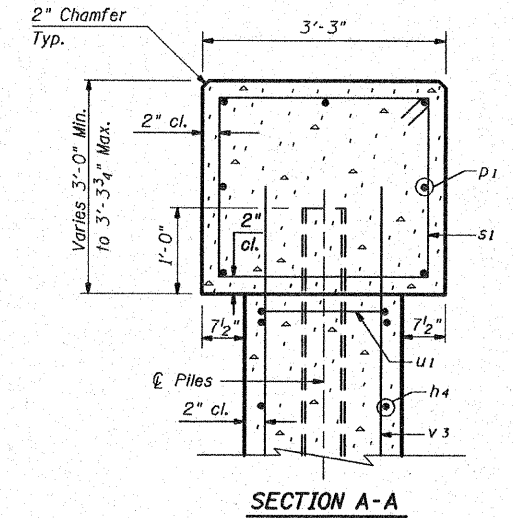


ELEVATION

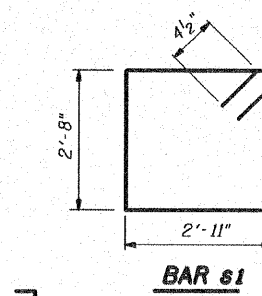


SECTION B-B

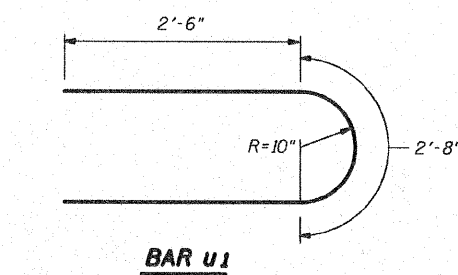
NOTE:
All Edges shall have Standard 3/4" Chamfer except as Noted.



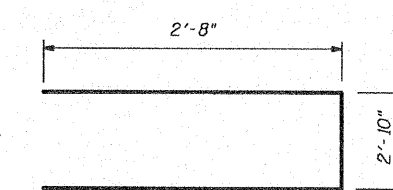
SECTION A-A



BAR s1



BAR u1



BAR u3

BILL OF MATERIAL

Bar	No.	Size	Length	Shape
h4	24	#5	30'-4"	—
p1	7	#7	33'-6"	—
s1	33	#4	11'-11"	□
u1	24	#5	7'-8"	U
u3	6	#6	8'-2"	—
v3	72	#5	12'-10"	—

ITEM	UNIT	QUANTITY
Reinforcement Bars	Pound	2740
Concrete Structures	Cu. Yd.	39.9
Furnishing Steel Piles, HP 10 x 42	Foot	552
Driving Piles	Foot	552
Test Piles Steel HP 10 x 42	Each	1
Structure Excavation	Cu. Yd.	66

PILE DATA

Type & Size	=	HP 10 x 42
Nominal Required Bearing	=	335 kips
Allowable Resistance Available	=	167 kips
Estimated Length	=	69'
Number of Production Piles	=	8
Number of Test Piles	=	1

PIER DETAIL
STRUCTURE NO. 025-3223

DESIGNED	SCD
CHECKED	DRB
DRAWN	THW
CHECKED	DRB

SHEET NO.	RTE.	SECTION	COUNTY	TOTAL SHEETS	SHEET NO.
5 of 7 SHEETS	CH 10	04-00084-01-PV	EFFINGHAM	139	60
			CONTRACT NO. 95639		
FED. ROAD DIST. NO. -		ILLINOIS	FED. AID PROJECT		