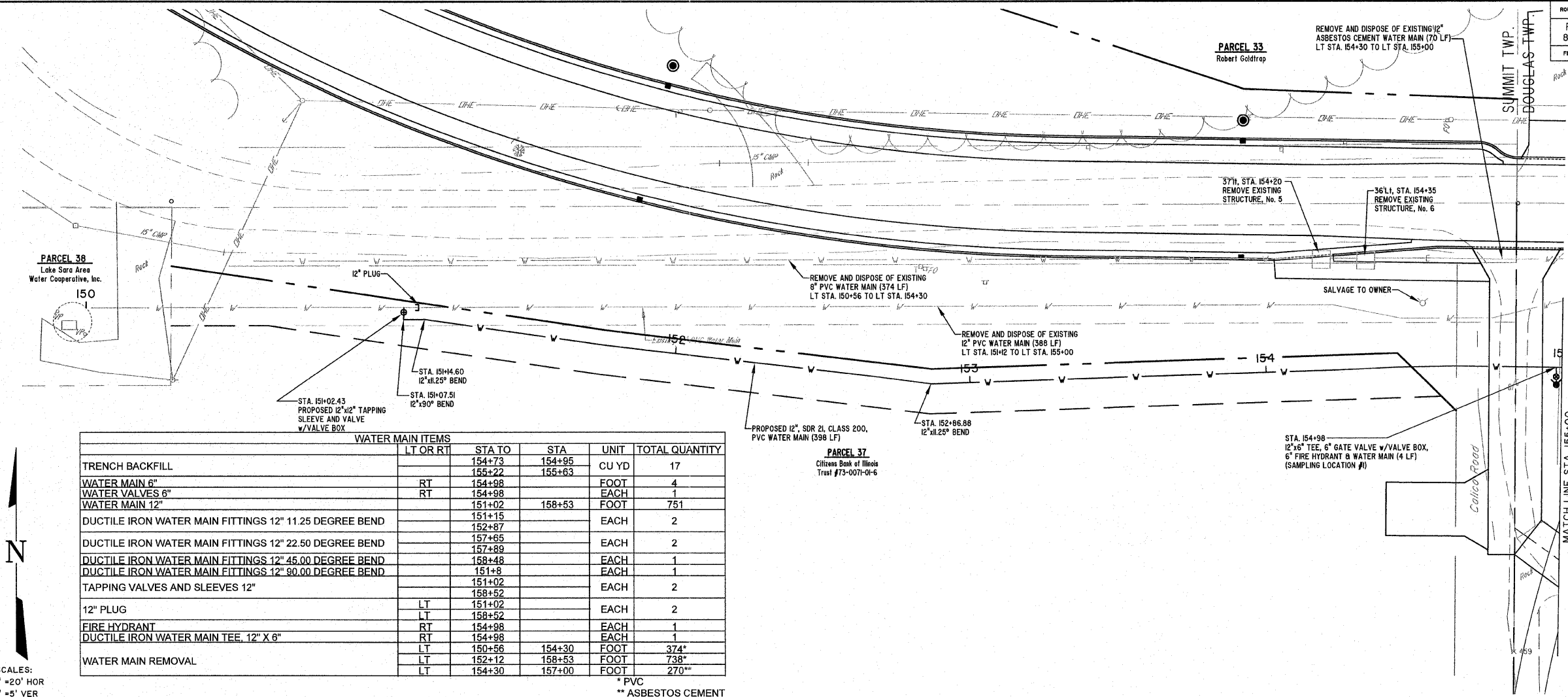


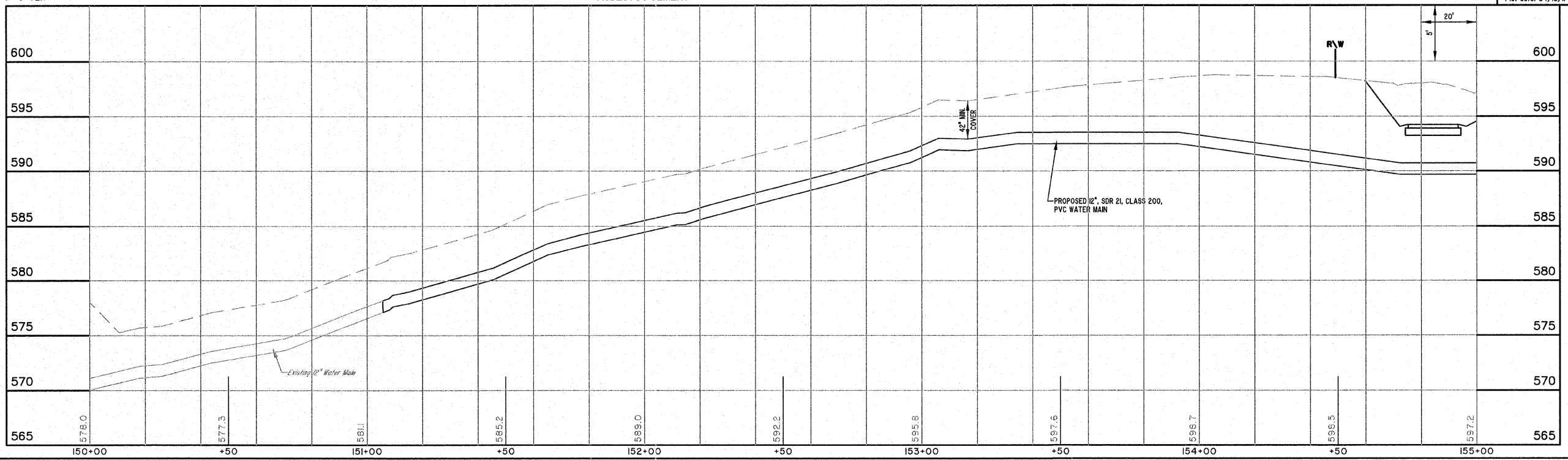
ROUTE NO.	SECTION	COUNTY	TOTAL SHEETS	SHEET NO.
FAU 8390	04-0084-01-PV	EFFINGHAM	139	64
FED. ROAD DIST. NO. 7		ILLINOIS	FED. AID PROJECT-	
CONTRACT #95639				



WATER MAIN ITEMS					
	LT OR RT	STA TO	STA	UNIT	TOTAL QUANTITY
TRENCH BACKFILL		154+73	154+95	CU YD	17
WATER MAIN 6"	RT	154+98	155+22	FOOT	4
WATER VALVES 6"	RT	154+98	155+63	EACH	1
WATER MAIN 12"		151+02	158+53	FOOT	751
DUCTILE IRON WATER MAIN FITTINGS 12" 11.25 DEGREE BEND		151+15		EACH	2
DUCTILE IRON WATER MAIN FITTINGS 12" 22.50 DEGREE BEND		152+87		EACH	2
DUCTILE IRON WATER MAIN FITTINGS 12" 45.00 DEGREE BEND		157+65		EACH	2
DUCTILE IRON WATER MAIN FITTINGS 12" 90.00 DEGREE BEND		157+89		EACH	1
TAPPING VALVES AND SLEEVES 12"		158+48		EACH	1
		151+02		EACH	2
		158+52		EACH	2
12" PLUG	LT	151+02		EACH	2
	RT	158+52		EACH	2
FIRE HYDRANT	RT	154+98		EACH	1
DUCTILE IRON WATER MAIN TEE, 12" X 6"	RT	154+98		EACH	1
	LT	150+56	154+30	FOOT	374*
	LT	152+12	158+53	FOOT	738*
	LT	154+30	157+00	FOOT	270**

* PVC
** ASBESTOS CEMENT

SCALES:
1" = 20' HOR
1" = 5' VER



WATER MAIN

MILANO & GRUNLOH ENGINEERS, LLC
 14 WEST WASHINGTON
 P.O. BOX 897
 EFFINGHAM, ILLINOIS 62401
 Phone: (217) 347-7222
 (800) 677-2714
 Fax #: (217) 342-3433
 Web Address: www.mge-engineers.com
 Design Firm #: 184-003108
 File name: S:\DWG\05\052270T.dwg\Water.dwg
 Plot date: 04/19/11 at 02:00