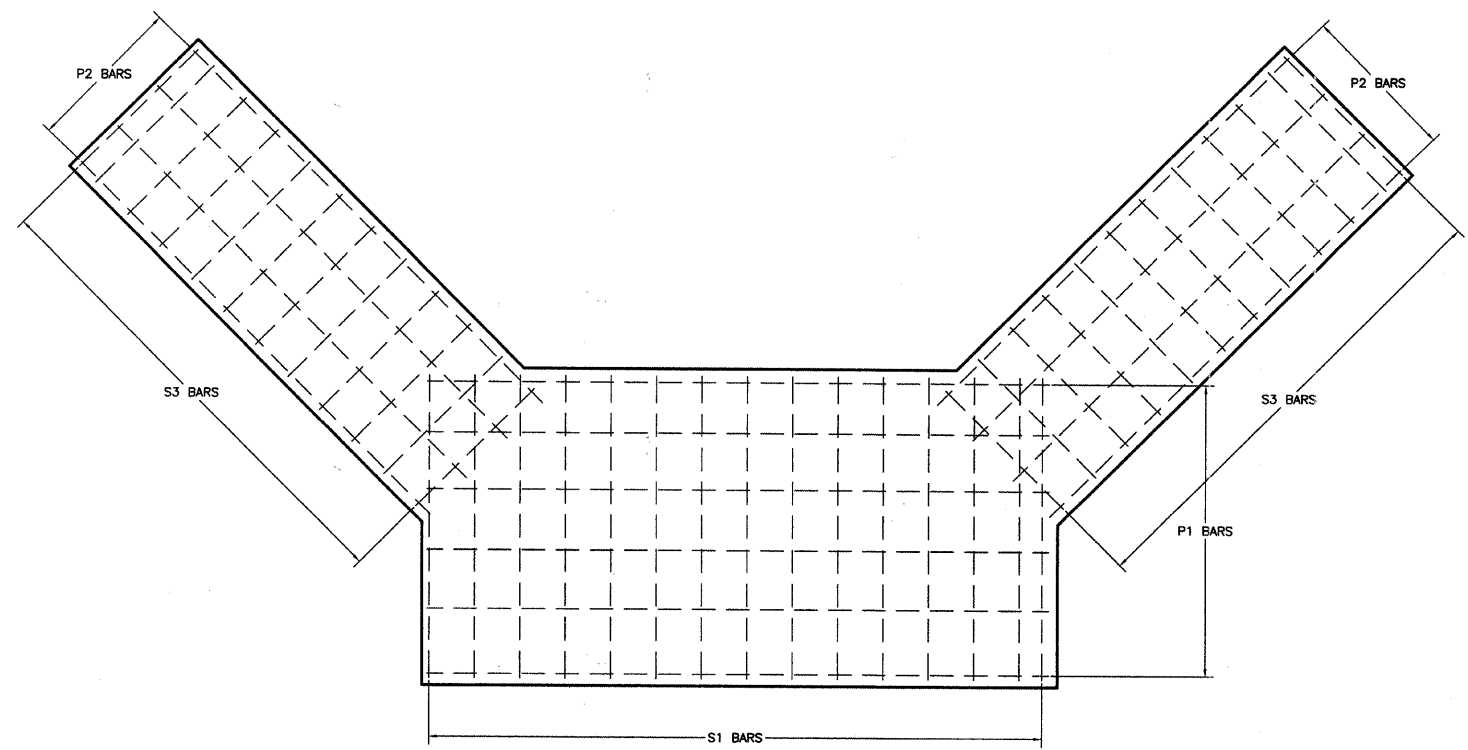
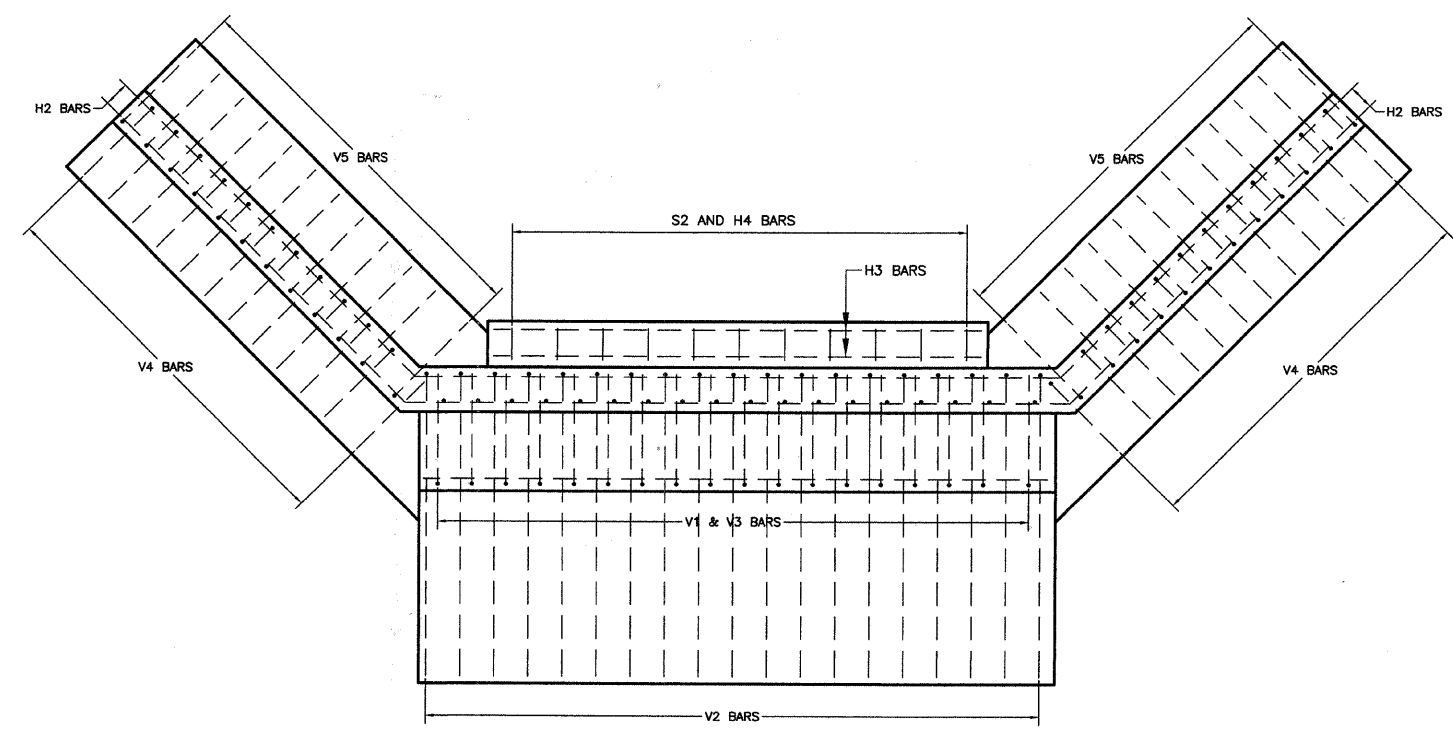


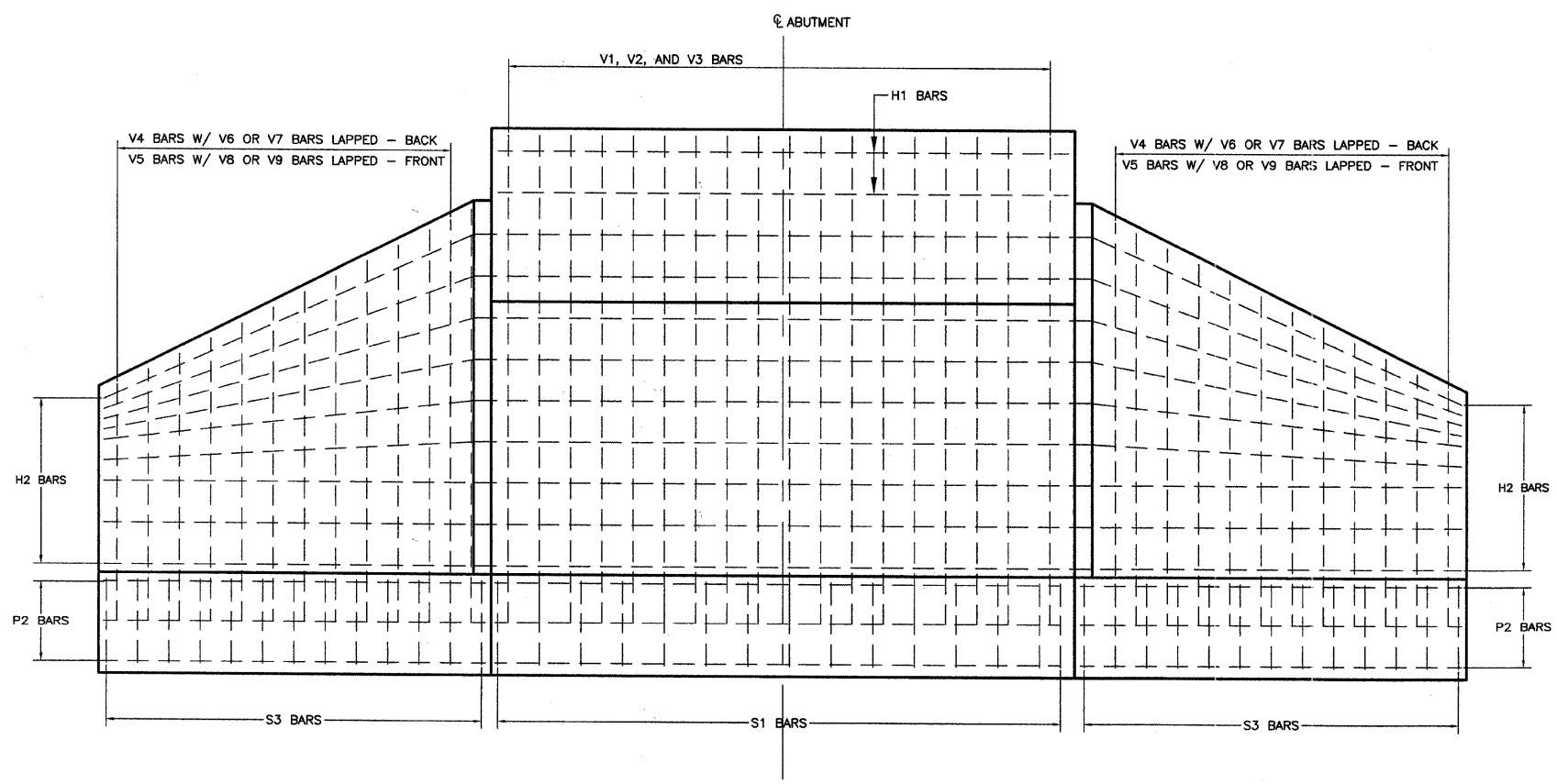
SECTION	COUNTY	TOTAL SHEETS	SHEET NO.
10-00091-00-BT	EFFINGHAM	9	7
CONTRACT NO. 95646			



TYPICAL PLAN VIEW
ABUTMENT FOOTING



TYPICAL PLAN VIEW
ABUTMENT WALL AND WINGWALLS



TYPICAL ELEVATION VIEW
SHOWING REINFORCEMENT

CHARLESTON ENGINEERING, INC.
CONSULTING ENGINEERS
106 NORTH KITCHELL
P.O. BOX 397
OLNEY, ILLINOIS 62450
(618) 392-0736
ILLINOIS DEPARTMENT OF PROFESSIONAL REGULATION REGISTRATION #184.003513

**ABUTMENT AND WINGWALL
PLAN - REINFORCEMENT**

**PEDESTRIAN BRIDGE
OVER LITTLE WABASH RIVER**

**SEC. 10-00091-00-BT
EFFINGHAM COUNTY
STATION 35B+82.66**