

**BILL OF MATERIAL**  
For One Abutment

Bar	No.	Size	Length	Shape
H	4	#7	13'-8"	—
H1	11	#5	13'-8"	—
H2	20	#5	31'-2"	—
H3	6	#5	10'-8"	—
H4	24	#5	2'-2"	—
P1	18	#6	13'-8"	—
P2	24	#6	11'-0"	—
S1	15	#5	18'-7"	□
S2	12	#4	5'-5"	□
S3	24	#5	12'-7"	□
V1	20	#6	12'-6"	—
V2	20	#7	18'-5"	—
V3	20	#6	5'-6"	—
V4	24	#7	7'-10"	—
V5	24	#6	7'-10"	—
V6	12	#6	7'-3"	—
V7	12	#6	5'-3"	—
V8	12	#5	7'-0"	—
V9	12	#5	5'-0"	—
V10	10	#4	6'-3"	—
Concrete Structures	Cu. Yd.	34.0		
Reinforcement Bars	Pound	4840		

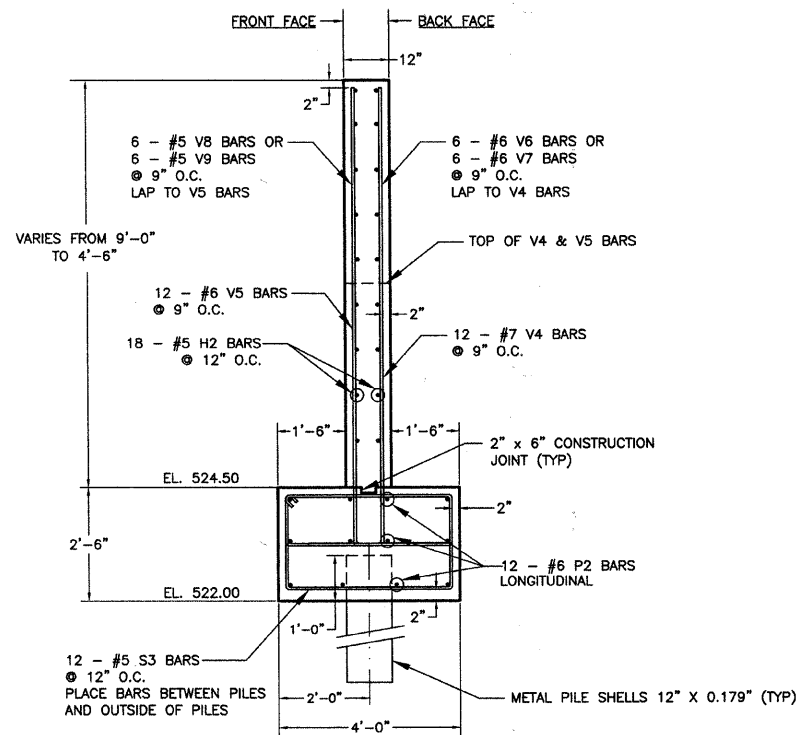
- NOTES:
- All concrete shall be  $f'c = 4000$  psi
  - All reinforcement shall be ASTM A-615, Grade 60.
  - Minimum Bar Laps Are As Follows:  
#5 = 2'-0"  
#6 = 2'-6"  
#7 = 2'-9"
  - Bend H2 Bars In Field As Required

**CHARLESTON ENGINEERING, INC.**  
CONSULTING ENGINEERS  
105 NORTH KITCHELL  
P.O. BOX 397  
OLNEY, ILLINOIS 62450  
(618) 392-0736  
ILLINOIS DEPARTMENT OF PROFESSIONAL REGULATION REGISTRATION #114.003513

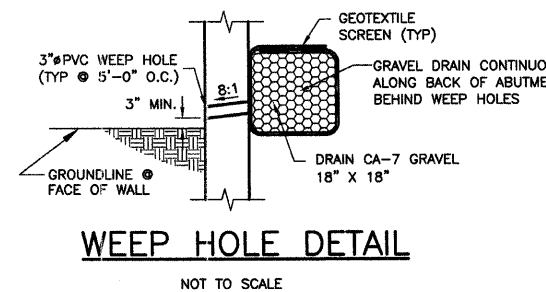
**ABUTMENT AND WINGWALL SECTIONS AND DETAILS**

**PEDESTRIAN BRIDGE OVER LITTLE WABASH RIVER**

SEC. 10-00091-00-BT  
EFFINGHAM COUNTY  
STATION 35B+82.66

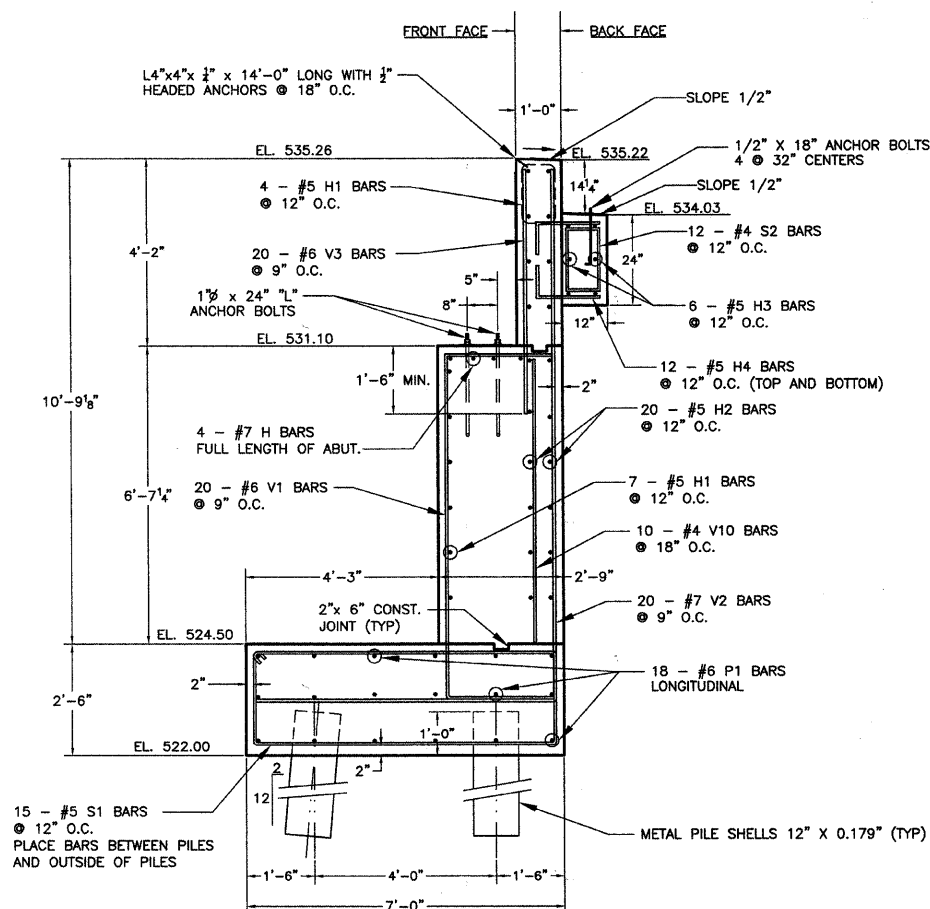


**TYPICAL WINGWALL SECTION**

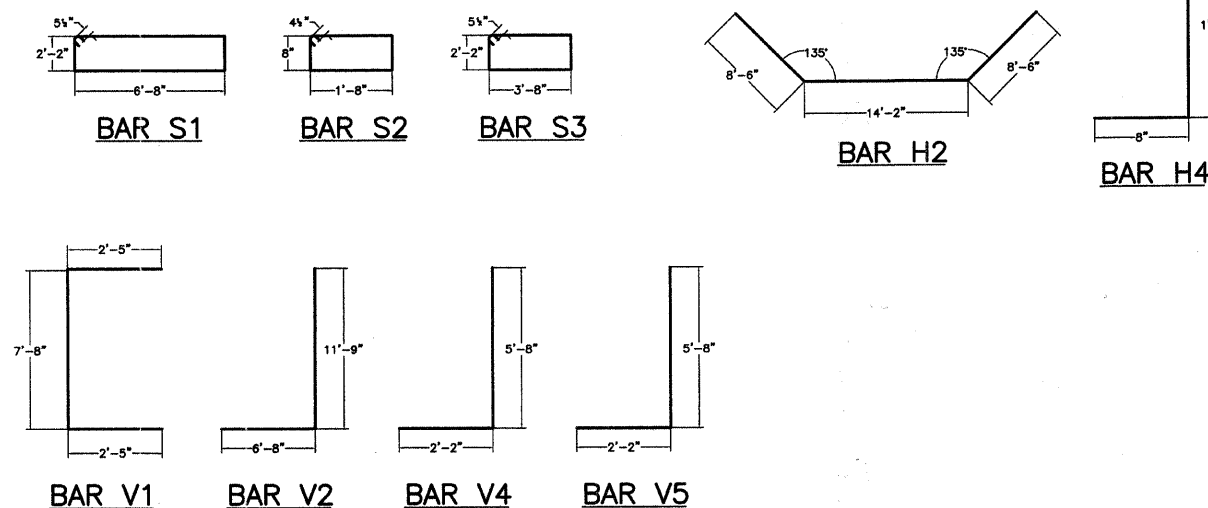


**WEEP HOLE DETAIL**

NOT TO SCALE



**TYPICAL ABUTMENT SECTION**



**BENT BAR DETAILS**