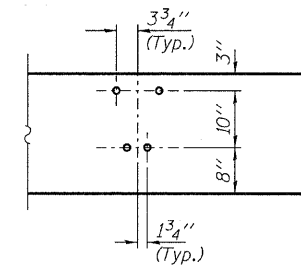
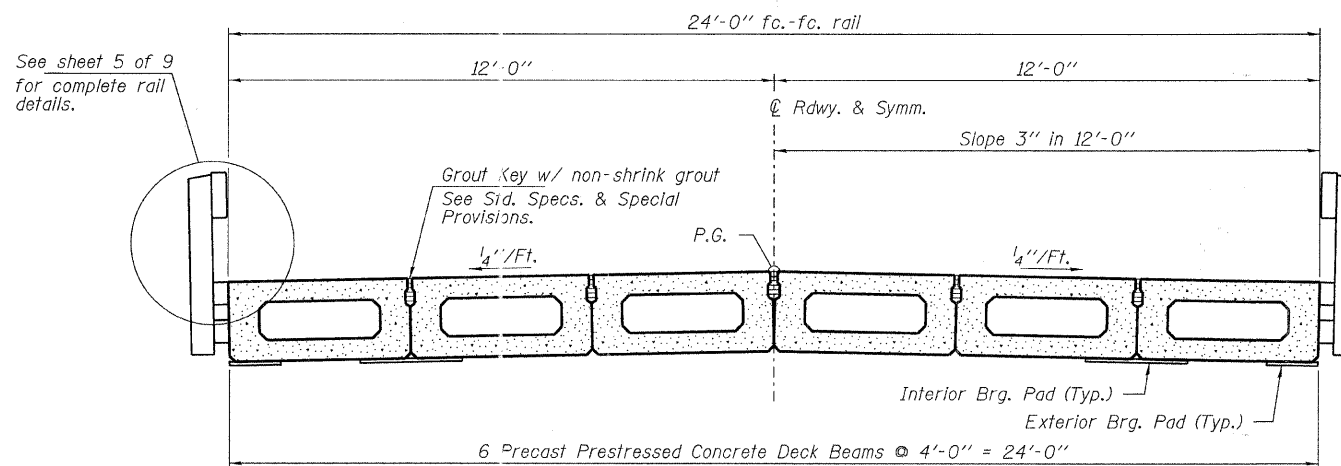


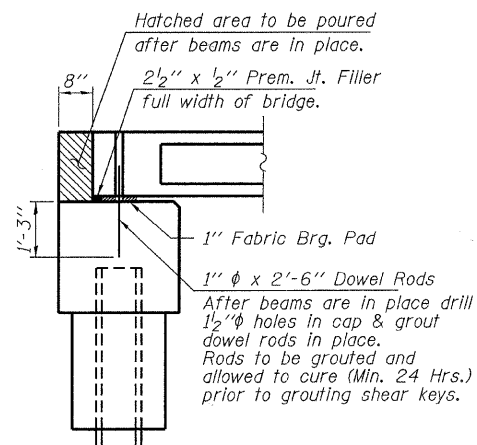
ELEVATION
Showing Rail Post Spacing
See sheet 5 of 9 for Railing Details.



DETAIL A



CROSS SECTION
See sheets 2 & 3 of 9 for Superstructure.



SECTION AT ABUTMENTS
@ Rt. L's

FILE NAME = 100058-shr-bridge.dgn	USER NAME =	DESIGNED - V.J.H.	REVISED -	STATE OF ILLINOIS WABASH COUNTY HIGHWAY DEPARTMENT	SUPERSTRUCTURE DETAILS STRUCTURE NO. 093-3134	T.R.	SECTION	COUNTY	TOTAL SHEETS	SHEET NO.	
HAMPTON, LENZINI AND RENWICK, INC. 3035 STEVENSON DRIVE, SUITE 201 SPRINGFIELD, ILLINOIS 62703	PLLOT SCALE =	CHECKED - S.W.M.	REVISED -			52	06-04114-00-BR	WABASH	13	8	
HLR ILLINOIS PROFESSIONAL DESIGN FIRM LS / PE / SE CORP. 184-000589	PLLOT DATE = 4/12/2011	DRAWN - D.A.B.	REVISED -			ROAD DISTRICT #4	CONTRACT NO. 95653				
		CHECKED - S.W.M.	REVISED -			SHEET NO. 4 OF 9 SHEETS		ILLINOIS FED. AID PROJECT			