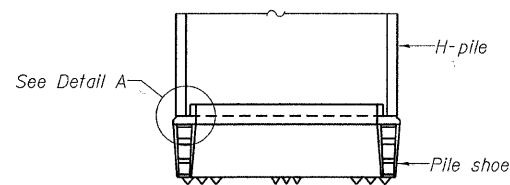
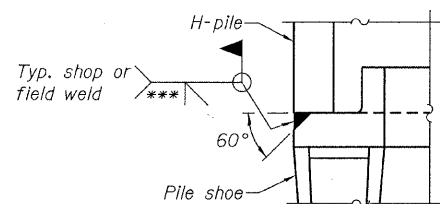


STEEL PILE TABLE

Designation	Depth d	Flange width b_f	Web and Flange thickness t	Encasement diameter A
HP 14x117	14 $\frac{1}{4}$ "	14 $\frac{7}{8}$ "	1 $\frac{3}{16}$ "	30"
x102	14"	14 $\frac{3}{4}$ "	1 $\frac{1}{16}$ "	30"
x89	13 $\frac{7}{8}$ "	14 $\frac{3}{4}$ "	5 $\frac{5}{8}$ "	30"
x73	13 $\frac{5}{8}$ "	14 $\frac{5}{8}$ "	1 $\frac{1}{2}$ "	30"
HP 12x84	12 $\frac{1}{4}$ "	12 $\frac{1}{4}$ "	1 $\frac{1}{16}$ "	24"
x74	12 $\frac{1}{8}$ "	12 $\frac{1}{4}$ "	5 $\frac{7}{8}$ "	24"
x63	12"	12 $\frac{1}{8}$ "	1 $\frac{1}{2}$ "	24"
x53	11 $\frac{3}{4}$ "	12"	7 $\frac{1}{16}$ "	24"
HP 10x57	10"	10 $\frac{1}{4}$ "	9 $\frac{1}{16}$ "	24"
x42	9 $\frac{3}{4}$ "	10 $\frac{1}{8}$ "	7 $\frac{1}{16}$ "	24"
HP 8x36	8"	8 $\frac{1}{8}$ "	7 $\frac{1}{16}$ "	18"

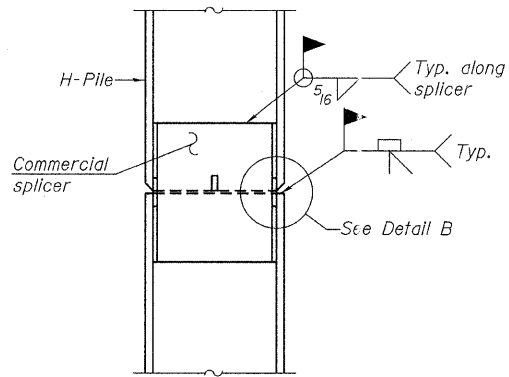


ELEVATION

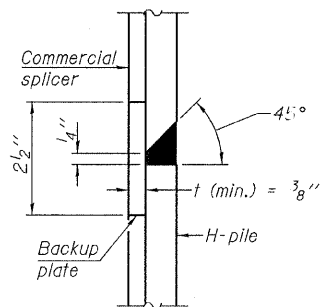


DETAIL A

H-PILE SHOE ATTACHMENT

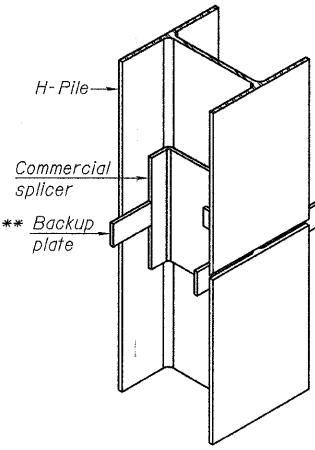


ELEVATION

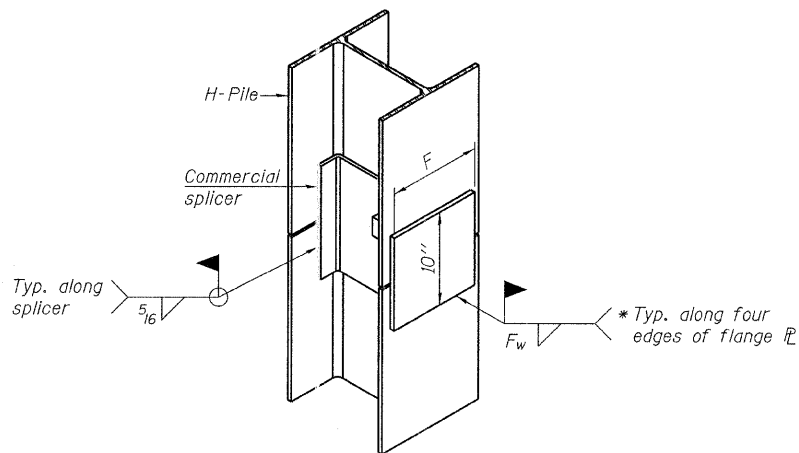


DETAIL "B"

WELDED COMMERCIAL SPLICE



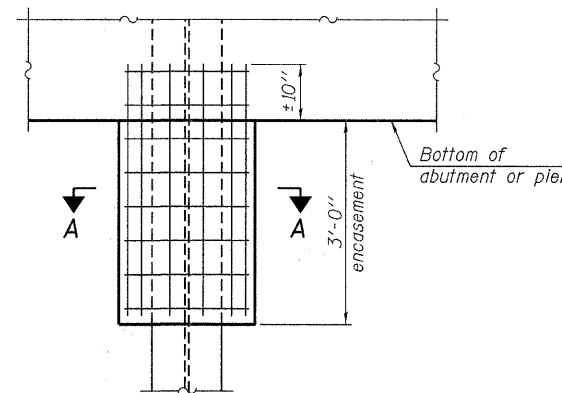
ISOMETRIC VIEW



ISOMETRIC VIEW

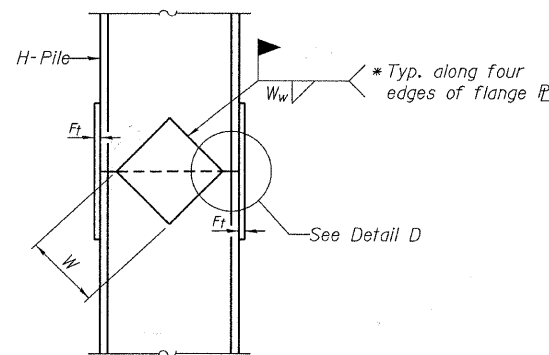
WELDED COMMERCIAL SPLICE ALTERNATE

- * Interrupt welds 1/4" from end of web and/or each flange.
- ** Remove portions of backup plates that extend outside the flanges.
- *** Weld size per pile shoe manufacturer (5/16" min.).

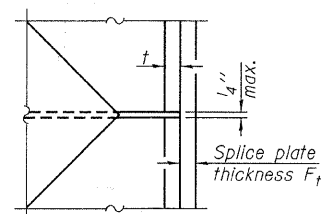


ELEVATION

PILE ENCASEMENT

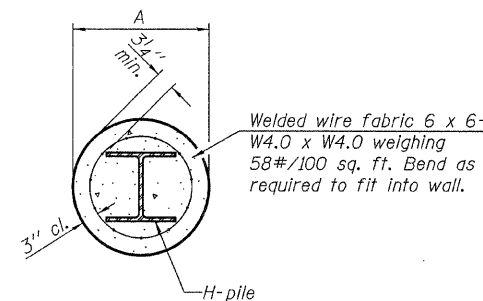


ELEVATION



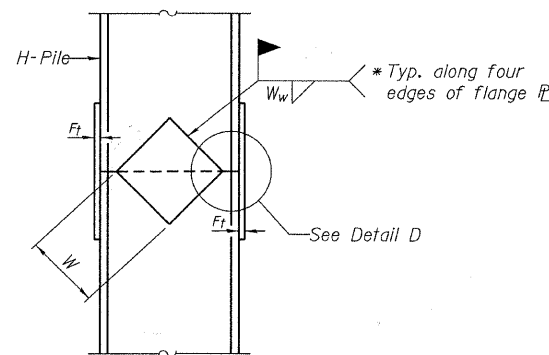
DETAIL D

WELDED PLATE FIELD SPLICE

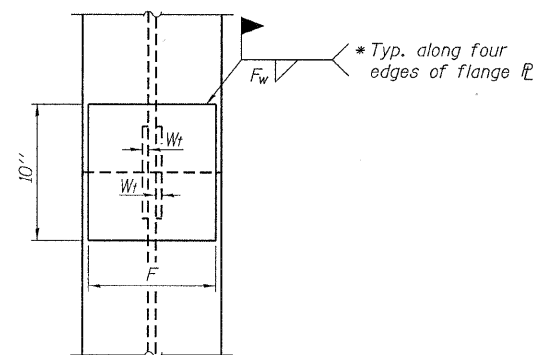


SECTION A-A

Note:
Forms for encasement may be omitted when soil conditions permit.



ELEVATION



END VIEW

Designation	F	F _t	F _w	W	W _t	W _w
HP 14x117	12 $\frac{1}{2}$ "	1"	7 $\frac{1}{8}$ "	7 $\frac{3}{4}$ "	5 $\frac{1}{8}$ "	1 $\frac{1}{2}$ "
x102	12 $\frac{1}{2}$ "	7 $\frac{1}{8}$ "	3 $\frac{1}{4}$ "	7 $\frac{3}{4}$ "	5 $\frac{1}{8}$ "	1 $\frac{1}{2}$ "
x89	12 $\frac{1}{2}$ "	3 $\frac{1}{4}$ "	1 $\frac{1}{16}$ "	7 $\frac{3}{4}$ "	5 $\frac{1}{8}$ "	1 $\frac{1}{2}$ "
x73	12 $\frac{1}{2}$ "	5 $\frac{1}{8}$ "	9 $\frac{1}{16}$ "	7 $\frac{3}{4}$ "	5 $\frac{1}{8}$ "	1 $\frac{1}{2}$ "
HP 12x84	10"	7 $\frac{1}{8}$ "	1 $\frac{1}{16}$ "	6 $\frac{1}{2}$ "	5 $\frac{1}{8}$ "	1 $\frac{1}{2}$ "
x74	10"	7 $\frac{1}{8}$ "	1 $\frac{1}{16}$ "	6 $\frac{1}{2}$ "	5 $\frac{1}{8}$ "	1 $\frac{1}{2}$ "
x63	10"	5 $\frac{1}{8}$ "	1 $\frac{1}{2}$ "	6 $\frac{1}{2}$ "	1 $\frac{1}{2}$ "	3 $\frac{3}{8}$ "
x53	10"	5 $\frac{1}{8}$ "	1 $\frac{1}{2}$ "	6 $\frac{1}{2}$ "	1 $\frac{1}{2}$ "	3 $\frac{3}{8}$ "
HP 10x57	8"	3 $\frac{1}{4}$ "	9 $\frac{1}{16}$ "	5 $\frac{1}{4}$ "	1 $\frac{1}{2}$ "	3 $\frac{3}{8}$ "
x42	8"	5 $\frac{1}{8}$ "	9 $\frac{1}{16}$ "	5 $\frac{1}{4}$ "	1 $\frac{1}{2}$ "	3 $\frac{3}{8}$ "
HP 8x36	7"	5 $\frac{1}{8}$ "	7 $\frac{1}{16}$ "	4 $\frac{1}{4}$ "	1 $\frac{1}{2}$ "	3 $\frac{3}{8}$ "

Note:
The steel H-piles shall be according to AASHTO M270 Grade 50.

F-HP

7-1-10

FILE NAME = 100058-ah-t-bridge.dgn	USER NAME =	DESIGNED - V.J.H.	REVISED -	STATE OF ILLINOIS WABASH COUNTY HIGHWAY DEPARTMENT	HP PILE DETAILS STRUCTURE NO. 093-3134	T.R.	SECTION	COUNTY	TOTAL SHEETS	SHEET NO.
HAMPTON, LENZINI AND RENWICK, INC. 308 STEVENSON DRIVE, SUITE 201 SPRINGFIELD, ILLINOIS 62703	PLOT SCALE =	CHECKED - S.W.M.	REVISED -			52	06-04114-00-BR	WABASH	13	11
ILLINOIS PROFESSIONAL DESIGN FIRM L31 PF / SE CORP. 184-000009	PLOT DATE = 4/12/2011	DRAWN - D.A.B.	REVISED -			CONTRACT NO. 95653				
		CHECKED - S.W.M.	REVISED -			ILLINOIS FED. AID PROJECT				
						SHEET NO. 7 OF 9 SHEETS				