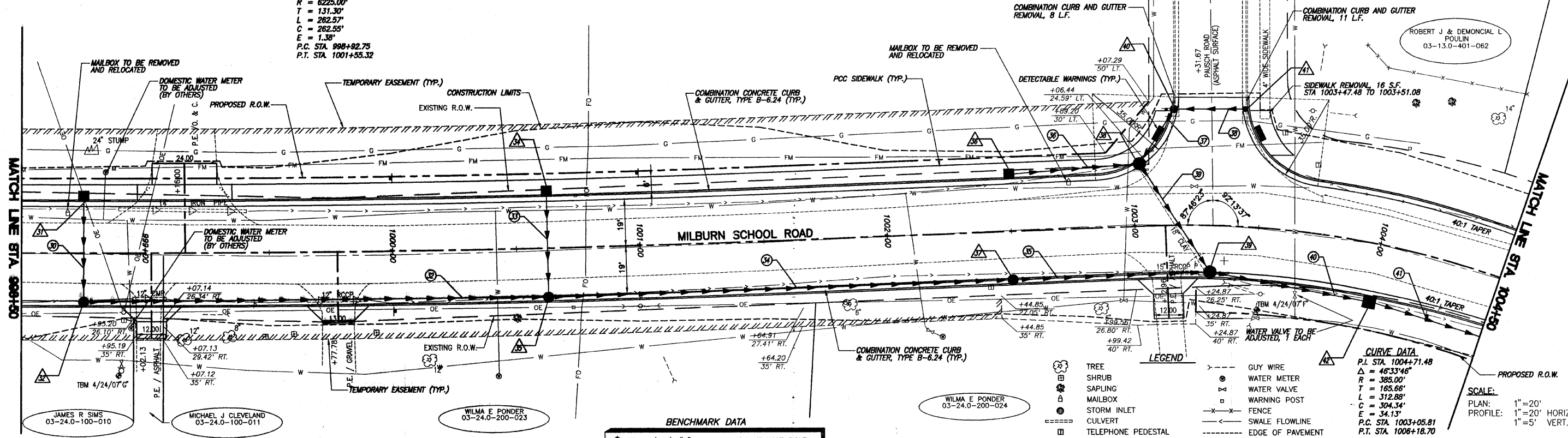


F.A.U. ROUTE	SECTION	COUNTY	TOTAL SHEETS	SHEET NUMBER
9148	06-00059-00-PV 08-00059-01-PV	ST. CLAIR	61	19
STA. 998+50.00		TO STA. 1004+50.00		
FEDERAL AID PROJECT		CONTRACT 97447		

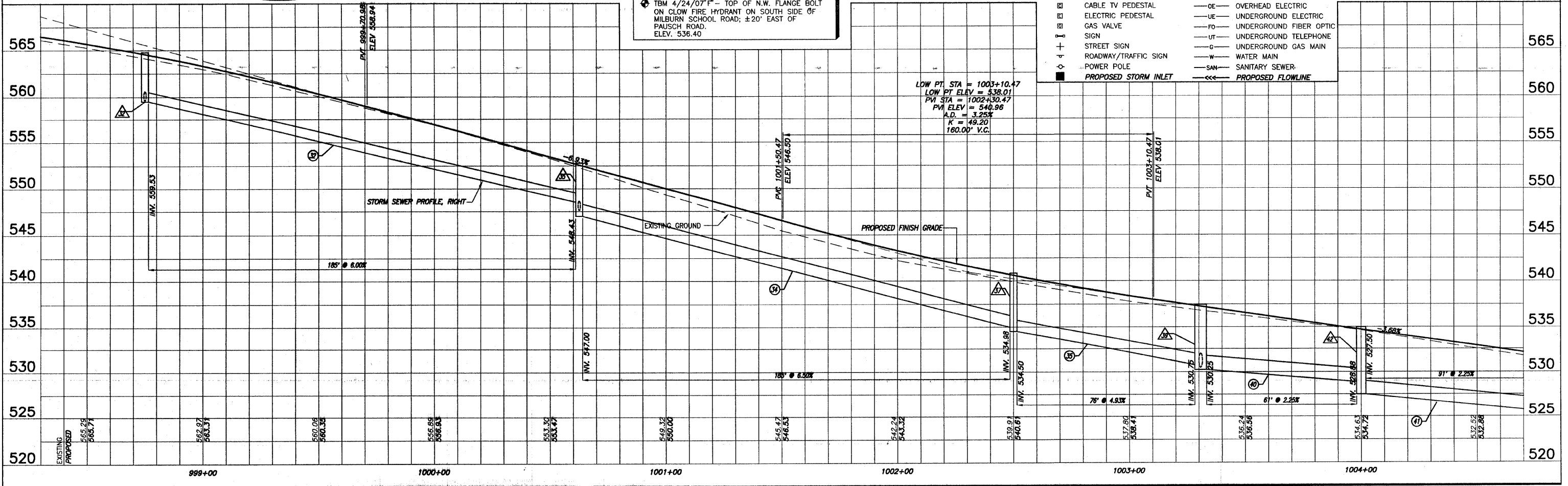
CURVE DATA
 P.I. STA. 1000+24.04
 $\Delta = 2'25''00''$
 $R = 6225.00'$
 $T = 131.30'$
 $L = 262.57'$
 $C = 262.55'$
 $E = 1.38'$
 P.C. STA. 998+92.75
 P.T. STA. 1001+55.32

CURVE DATA
 P.I. STA. 1004+71.48
 $\Delta = 46'33''46''$
 $R = 385.00'$
 $T = 165.66'$
 $L = 312.88'$
 $C = 304.34'$
 $E = 34.13'$
 P.C. STA. 1003+05.81
 P.T. STA. 1006+18.70



BENCHMARK DATA
 TBM 4/24/07" - TOP OF N.W. FLANGE BOLT ON CLOW FIRE HYDRANT ON SOUTH SIDE OF MILBURN SCHOOL ROAD; ±20' EAST OF PAUSCH ROAD. ELEV. 536.40

- LEGEND**
- TREE
 - ⊠ SHRUB
 - ⊞ SAPLING
 - ⊞ MAILBOX
 - ⊞ STORM INLET
 - ⊞ CULVERT
 - ⊞ TELEPHONE PEDESTAL
 - ⊞ CABLE TV PEDESTAL
 - ⊞ ELECTRIC PEDESTAL
 - ⊞ GAS VALVE
 - ⊞ SIGN
 - ⊞ STREET SIGN
 - ⊞ ROADWAY/TRAFFIC SIGN
 - ⊞ POWER POLE
 - ⊞ PROPOSED STORM INLET
 - ⊞ GUY WIRE
 - ⊞ WATER METER
 - ⊞ WATER VALVE
 - ⊞ WARNING POST
 - ⊞ FENCE
 - ⊞ SWALE FLOWLINE
 - ⊞ EDGE OF PAVEMENT
 - ⊞ OVERHEAD ELECTRIC
 - ⊞ UNDERGROUND ELECTRIC
 - ⊞ UNDERGROUND FIBER OPTIC
 - ⊞ UNDERGROUND TELEPHONE
 - ⊞ UNDERGROUND GAS MAIN
 - ⊞ WATER MAIN
 - ⊞ SANITARY SEWER
 - ⊞ PROPOSED FLOWLINE



ROADWAY PLAN AND PROFILE MILBURN SCHOOL ROAD IMPROVEMENTS ST. CLAIR COUNTY, ILLINOIS