

FOR UTILITY LOCATION PURPOSES, THIS PROJECT IS LOCATED IN SECTIONS 4 AND 5, TOWNSHIP 5 NORTH, RANGE 9 WEST OF THE THIRD PRINCIPAL MERIDIAN.

UTILITY INFORMATION CAN BE OBTAINED BY CALLING J.U.L.I.E. AT (800) 892-0123

THE FOLLOWING UTILITY COMPANIES HAVE FACILITIES WITHIN THE LIMITS OF THIS PROJECT:

ILLINOIS AMERICAN WATER CO. 4436 INDUSTRIAL DRIVE ALTON, ILLINOIS 62002 (618) 466-2131
 AT&T 203 GOETHE COLLINSVILLE, ILLINOIS 62234 (618) 346-6422

AMEREN IP 700 OAKWOOD AVENUE ALTON, ILLINOIS 62002 (618) 463-4041 (ELECTRIC) (618) 463-4027 (GAS)
 ALTON PUBLIC WORKS 2 EMMA KAUS LANE ALTON, ILLINOIS 62002 (618) 466-3133

CHARTER COMMUNICATIONS 508 NIAGARA AVENUE EAST ALTON, ILLINOIS 62024 (618) 779-5021
 ILLINOIS DEPT. OF HUMAN SERVICES ALTON MENTAL HEALTH CENTER 4500 COLLEGE AVE. ALTON, IL 62002 (618) 474-3246

STATE OF ILLINOIS DEPARTMENT OF TRANSPORTATION DIVISION OF HIGHWAYS FEDERAL AID HIGHWAY

FOSTERBURG ROAD - PHASE 2 FOSTERBURG ROAD IMPROVEMENTS SECTION-05-00218-01-WR FAU ROUTE 9002 (FOSTERBURG ROAD) PROJECT M-5011 (210) ALTON, ILLINOIS MADISON COUNTY JOB C-98-344-06

SECTION	COUNTY	TOTAL SHEETS	SHEET NO.
*	MADISON	55	1

FEDERAL AID PROJECT
 * 05-00218-01-WR
 CONTRACT NO. 97456

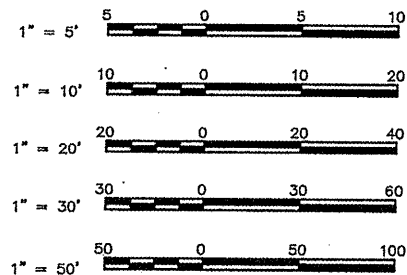
INDEX TO SHEETS

1. COVER SHEET
2. GENERAL NOTES, LEGENDS, AND CONTROL POINTS
3. SUMMARY OF QUANTITIES
4. EXISTING TYPICAL SECTIONS
5. PROPOSED TYPICAL SECTIONS
6. SIDE ROAD TYPICAL SECTIONS
7. SCHEDULES OF QUANTITIES
- 8.-14. PLAN AND PROFILE
15. TRAFFIC CONTROL PLANS
- 16.-17. STAGE 2 TRAFFIC CONTROL PLAN
- 18.-19. EROSION CONTROL PLANS
20. INTERSECTION DETAILS
- 21.-22. PAVEMENT MARKING AND SIGNING PLAN
23. ENTRANCE SCHEDULE AND DETAILS
- 24.-25. CONSTRUCTION DETAILS
- 26.-52. CROSS SECTIONS - FOSTERBURG ROAD
53. CROSS SECTIONS - ALTON COMMERCE PKWY
- 54.-55. CROSS SECTIONS - STOREY LANE

HIGHWAY STANDARDS

280001-05	608001-04
442201-03	606201-02
542301-03	701006-03
542546-01	701011-02
602301-03	701201-04
602306-03	701301-04
602401-03	701306-03
602601-02	701311-03
602701-02	701326-04
604001-03	701502-04
604011-04	701901-01
604021-02	720001-01
604036-02	720006-02
604066-02	780001-02
	781001-03

SCALES

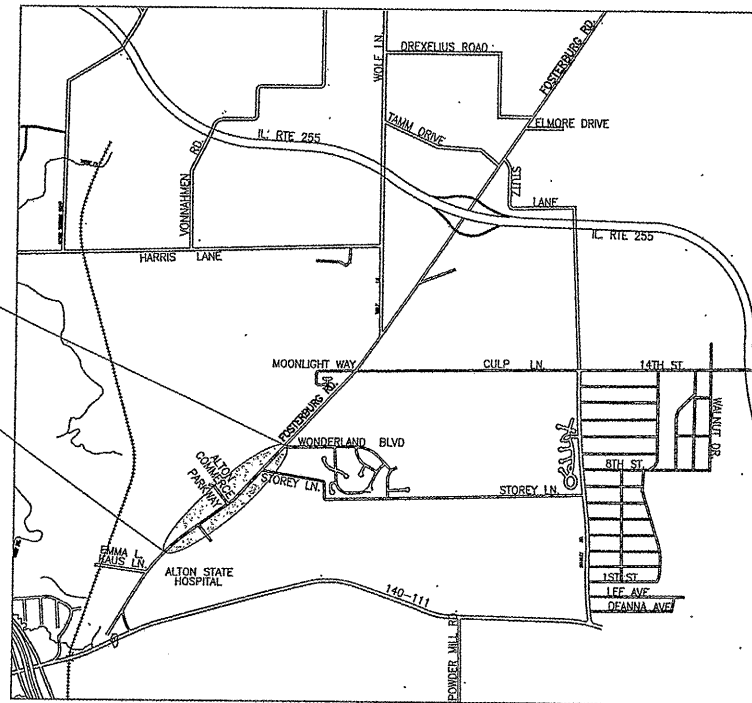


FULL SIZE PLANS HAVE BEEN PREPARED USING STANDARD ENGINEERING SCALES. REDUCED SIZED PLANS WILL NOT CONFORM TO STANDARD SCALES. IN MAKING MEASUREMENTS ON REDUCED PLANS THE ABOVE SCALES MAY BE USED.

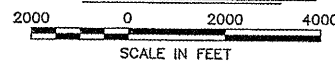
FUNCTIONAL CLASSIFICATION: SUBURBAN MINOR ARTERIAL
 DESIGN SPEED = 45 M.P.H.
 CURRENT ADT = 7,850

PROJECT ENDS
 STA. 121+39

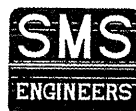
PROJECT BEGINS
 STA. 91+82



LOCATION MAP



LENGTH OF PROJECT = 2,957.00 FEET = 0.560 MILES



Sheppard Morgan & Schwaab, Inc.
 CONSULTING ENGINEERS & LAND SURVEYORS

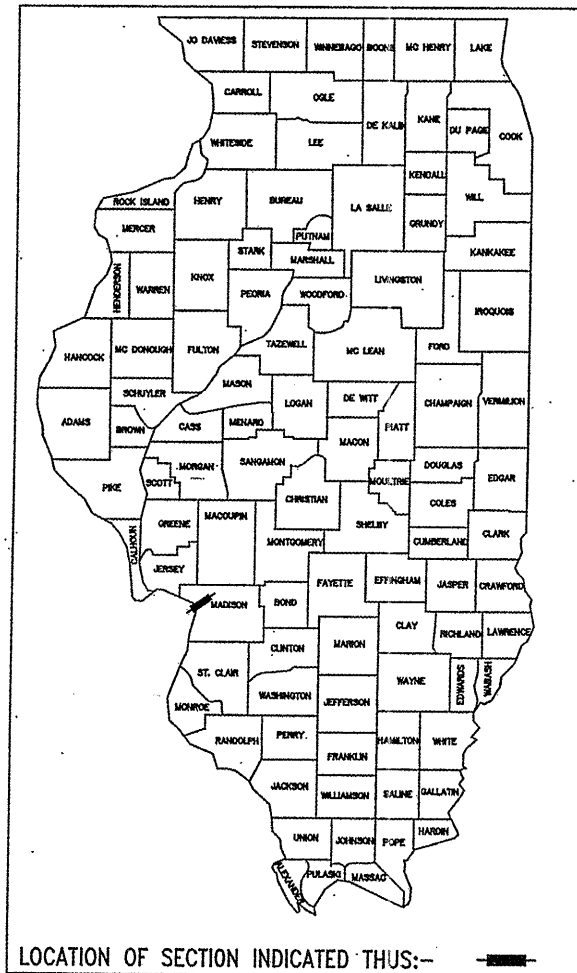
216 Market Street
 Alton, Illinois 62002
 P.O. Box 8
 618/462-9766

10 Central Industrial Dr
 Suite 3
 Northgate Center
 Granite City, IL 62040
 618/977-8700



David E. Godar

DATE SIGNED 3-22-2011
 EXPIRATION DATE 11-30-2011



LOCATION OF SECTION INDICATED THUS:-

APPROVED	<i>Tom Hoechst</i>	20
TOM HOECHST - MAYOR OF ALTON		
PASSED	<i>Mark 30</i>	20 11
DISTRICT 8 ENGINEER OF LOCAL ROADS & STREETS		
RELEASING FOR BID BASED ON LIMITED REVIEW	<i>Mark 30</i>	20 11
<i>Mark C. Lame</i>		
MARK C. LAME, P.E. DEPUTY DIRECTOR OF HIGHWAYS REGION FIVE ENGINEER		
STATE OF ILLINOIS DEPARTMENT OF TRANSPORTATION		
PRINTED BY THE AUTHORITY OF THE STATE OF ILLINOIS		