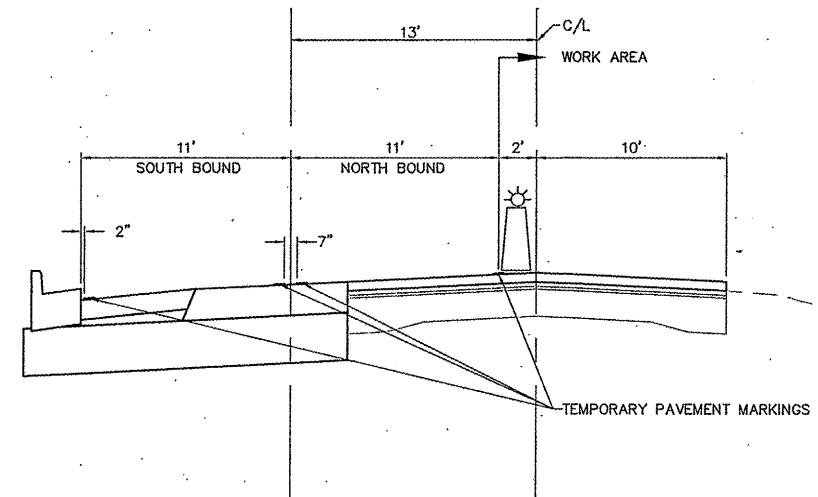


NO.	DESCRIPTION

SMS ENGINEERS
 Sheppard, Morgan & Schwaab, Inc.
 CONSULTING ENGINEERS AND LAND SURVEYORS
 215 Market Street, P.O. Box E, Alton, IL 62002 618/462-9755 E-mail: mail@smsengineers.com
 10 Central Industrial Drive, Suite 3, Granite City, IL 62040 618/877-8700 E-mail: mail@smsengineers.com
 DESIGN FIRM # 184-000992

TRAFFIC CONTROL LEGEND

- WORK AREA
 - TYPE I OR TYPE II BARRICADE OR DRUM WITH STEADY BURNING LIGHT
 - DIRECTION INDICATION BARRICADE WITH STEADY BURNING LIGHT
 - TYPE III BARRICADE WITH REFLECTORIZED STRIPING ON BOTH SIDES WITH FLASHING LIGHTS
 - MONO DIRECTIONAL FLASHING LIGHT
 - SIGN "ROAD CONSTRUCTION AHEAD" W20-1(O) - 48" x 48"
 - SIGN "SINGLE LANE SHIFT LEFT" W1-4(L) 48" x 48"
 - SIGN "SINGLE LANE SHIFT RIGHT" W1-4(R) 48" x 48"
 - SIGN "TWO WAY TRAFFIC" W6-3(O) 48" x 48"
 - SIGN "35 MPH" W13-1P 24" x 24"
- T.P.M.=TEMPORARY PAVEMENT MARKING



**PROPOSED TYPICAL SECTION
 FOSTERBURG ROAD - STAGE 2**

CITY OF ALTON, ILLINOIS
 SECTION 05-00218-01-WR
 FOSTERBURG ROAD - PHASE 2
 STAGE 2 TRAFFIC CONTROL PLAN

DWG. NO.	FBR_PHS 2 traffic stage .dwt
REF. BY	
JOB NO.	206612
DSN. BY:	DEG
DWN. BY:	CDP
CHK. BY:	DEG
DATE:	JAN, 2011
SCALE:	1" = 50' H.
SHEET:	16 OF 55