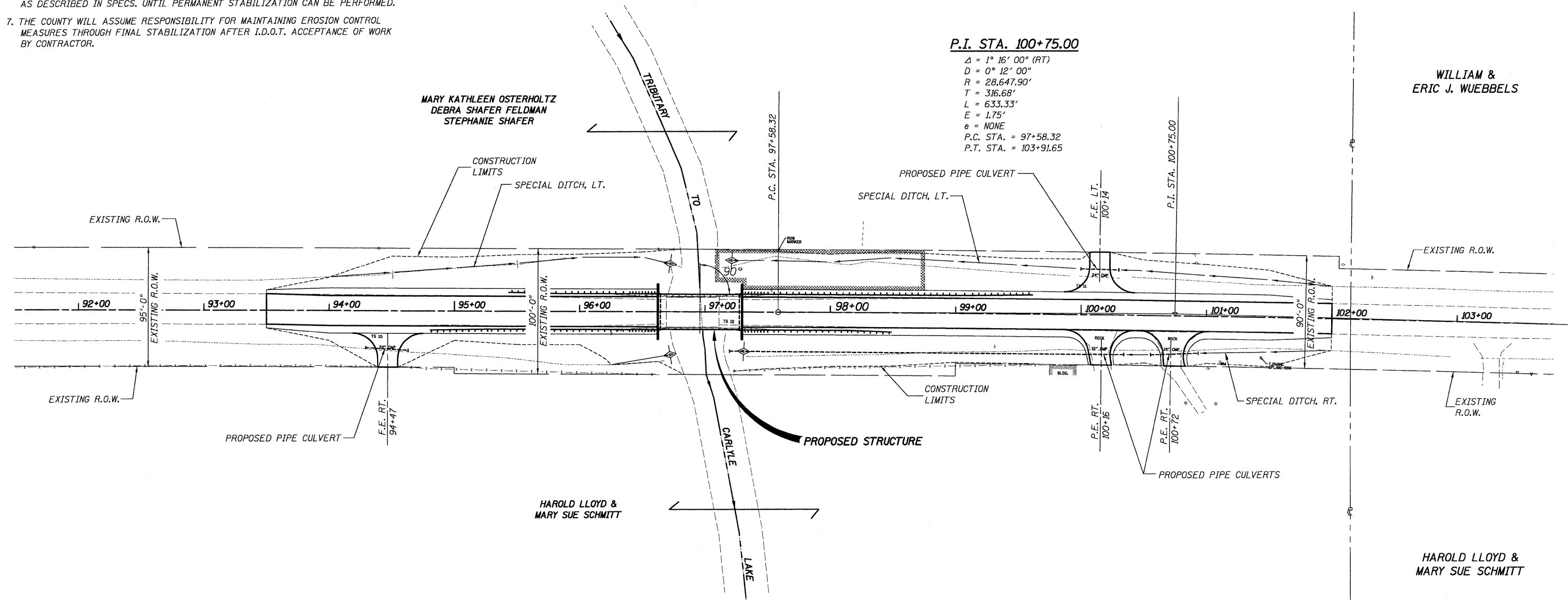


GENERAL NOTES:

1. CONTRACTOR SHALL CONSULT JOB SPECIFICATIONS FOR MORE INFORMATION.
2. LAYOUT OF EROSION CONTROL MEASURES MAY BE ADJUSTED IN FIELD BY ENGINEER FOR VARYING GROUND CONDITIONS.
3. AGGREGATE DITCH CHECKS SHALL BE PLACED ACCORDING TO THE DETAILS SHOWN ON THIS SHEET AND AS DIRECTED BY THE ENGINEER.
4. HAY OR STRAW BALES SHALL NOT BE USED FOR DITCH CHECKS.
5. CONTRACTOR SHALL PROVIDE STABILIZED CONSTRUCTION ENTRANCES AS NECESSARY TO MINIMIZE OFF SITE VEHICLE TRACKING OF SOIL AND DEBRIS. SEE SPECS.
6. ALL DISTURBED AREAS SHALL RECEIVE TEMPORARY EROSION CONTROL SEEDING AS DESCRIBED IN SPECS. UNTIL PERMANENT STABILIZATION CAN BE PERFORMED.
7. THE COUNTY WILL ASSUME RESPONSIBILITY FOR MAINTAINING EROSION CONTROL MEASURES THROUGH FINAL STABILIZATION AFTER I.D.O.T. ACCEPTANCE OF WORK BY CONTRACTOR.

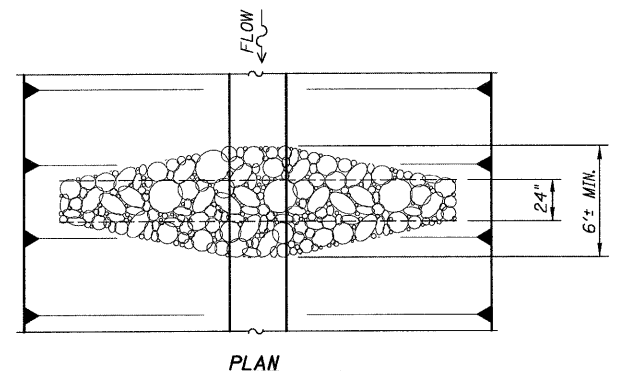


P.I. STA. 100+75.00
 $\Delta = 1^\circ 16' 00''$ (RT)
 $D = 0^\circ 12' 00''$
 $R = 28,647.90'$
 $T = 316.68'$
 $L = 633.33'$
 $E = 1.75'$
 $\theta = \text{NONE}$
 $P.C. STA. = 97+58.32$
 $P.T. STA. = 103+91.65$

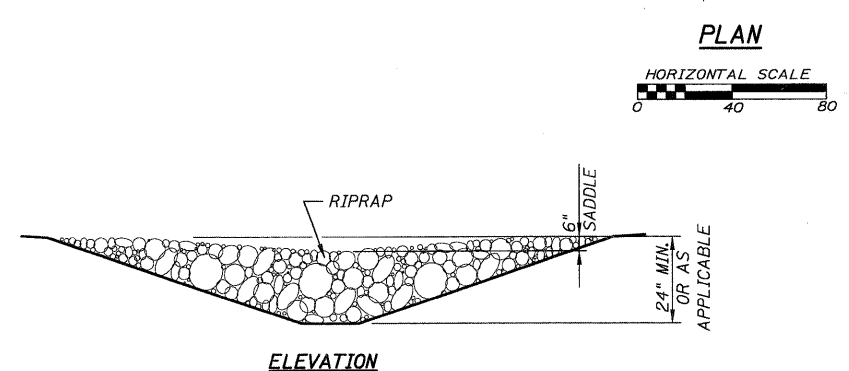
WILLIAM & ERIC J. WUEBBELS

HAROLD LLOYD & MARY SUE SCHMITT

HAROLD LLOYD & MARY SUE SCHMITT



AGGREGATE DITCH CHECK



ELEVATION



EROSION CONTROL LEGEND

- AGGREGATE DITCH CHECK
- FLOW DIRECTION
- REVETMENT MAT

FILE NAME = h:\5789\06_eros_5789.dgn	USER NAME = .USERDESCR.	DESIGNED - B.I.B.	REVISED -	STATE OF ILLINOIS DEPARTMENT OF TRANSPORTATION	EROSION CONTROL PLAN	F.A.S. RTE. 782	SECTION 07-00084-00-BR/07-00088-00-BR	COUNTY BOND/CLINTON	TOTAL SHEETS 19	SHEET NO. 6
PLOT SCALE = 48.0000' / IN.	DRAWN - K.H.L.	REVISED -	S.N. 003-3052			CONTRACT NO. 97469				
PLOT DATE = 4/12/2011	CHECKED - B.G.H.	REVISED -	ILLINOIS FED. AID PROJECT							
HENRY, MEISENHEIMER & GENDE, INC. LAKE ROAD, P.O. BOX 70 CARLYLE, ILL. 62231 (618) 594-3711 WWW.HMGENGINEERS.COM										

H.M.G. NO. 5789