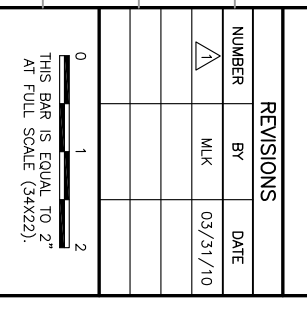


**NOTES**

1. SUBTRACT 0.24 FEET FROM GRADES SHOWN IN PLANS (1929 DATUM) TO OBTAIN 1988 NAVD.

K:\Chicago\epk\0829008.txd E:\Draw Sheets\10mws  
 FILE: txy-yscc01.dwg  
 LAYOUT: Model  
 UPDATE BY: mikelz  
 SURVEY BOOK #  
 DATE: Fri 4/1/11 9:33am  
 XREF DWG: tbcnt\_txy.dwg  
 tbcgrd.dwg  
 tb.dwg

NUMBER	BY	DATE
1	MLK	03/31/10



**CHICAGO EXECUTIVE AIRPORT  
 WHEELING/PROSPECT HEIGHTS, ILLINOIS  
 CONSTRUCT PARTIAL PARALLEL TAXIWAY ECHO AND  
 PARTIAL OVERLAY OF TAXIWAY ECHO**

**TAXIWAY ECHO  
 CROSS SECTIONS**

Copyright CMT, Inc.

**CMT**  
 CRAWFORD, MURPHY & TILLY, INC.  
 CONSULTING ENGINEERS  
 License No. 184-000613

**CHICAGO EXECUTIVE AIRPORT**

DESIGN BY:	MLK
DRAWN BY:	MIW
CHECKED BY:	MLK
APPROVED BY:	DLP
DATE:	04/22/11
JOB No.:	08290-08
ILLINOIS PROJECT: PWK-3244	
A.I.P. PROJECT: 3-17-0018-B32	

SHEET 35 OF 49 SHEETS