

STATE OF ILLINOIS  
DEPARTMENT OF TRANSPORTATION

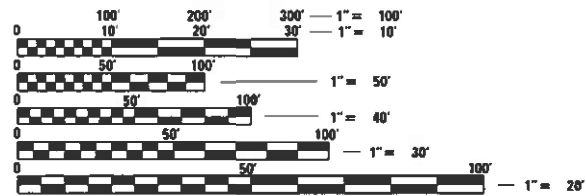
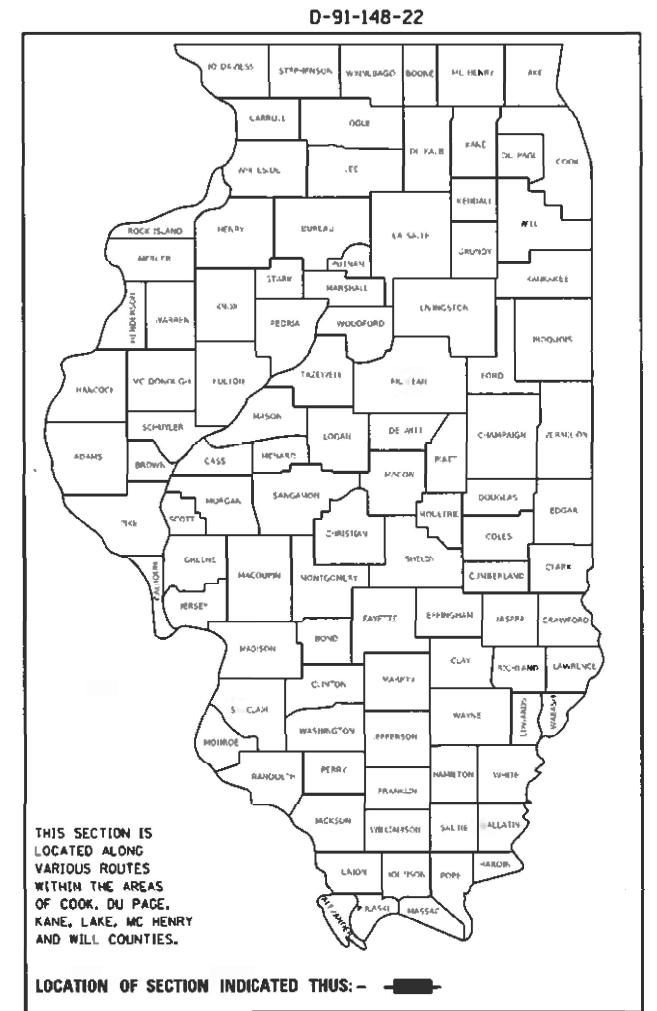
F.A. RTE.	SECTION	COUNTY	TOTAL SHEETS	SHEET NO.
VAR.	2022-EXPD-SW	*	10	1
		ILLINOIS	CONTRACT NO. 62R49	

\* COOK, DU PACE, LAKE AND WILL

FOR INDEX OF SHEETS, SEE SHEET NO.

# PROPOSED HIGHWAY PLANS

ROUTE: VARIOUS DISTRICT ONE  
SECTION: 2022-EXPD-SW  
EXPRESSWAY CLEANING (DAYTIME SWEEPING)  
COUNTY: VARIOUS (COOK, DUPAGE, LAKE AND WILL)  
C-91-183-22



FULL SIZE PLANS HAVE BEEN PREPARED USING STANDARD ENGINEERING SCALES. REDUCED SIZED PLANS WILL NOT CONFORM TO STANDARD SCALES. IN MAKING MEASUREMENTS ON REDUCED PLANS, THE ABOVE SCALES MAY BE USED.

J.U.L.I.E.  
JOINT UTILITY LOCATION INFORMATION FOR EXCAVATION  
1-800-892-0123  
OR 811

LOCATION MAPS - SEE INDEX OF SHEETS

PROJECT MANAGER: J. ALAIN MIDY (847) 221-3056

CONTRACT NO. 62R49

STATE OF ILLINOIS  
DEPARTMENT OF TRANSPORTATION

SUBMITTED February 14, 2022  
Gene Rind REGIONAL ENGINEER

May 13, 2022 [Signature]  
ENGINEER OF DESIGN AND ENVIRONMENT

May 13, 2022 [Signature]  
DIRECTOR OF HIGHWAYS PROJECT IMPLEMENTATION

PRINTED BY THE AUTHORITY  
OF THE STATE OF ILLINOIS

F.A. RTE.	SECTION	COUNTY	TOTAL SHEETS	SHEET NO.
VAR. 2022-EXPD-SW	*		10	2
STA.		TO STA.		
FED. ROAD DIST. NO.	ILLINOIS	FED. AID PROJECT		

INDEX OF SHEETS

1. TITLE SHEET
2. INDEX OF SHEETS  
APPLICABLE STATE STANDARDS
3. SUMMARY OF QUANTITIES  
SCHEDULE OF CLEANING STARTING DATES
4. EXPRESSWAY TYPICAL SECTIONS
5. TYPICAL ROADWAY CLEANING DETAILS
6. EXPRESSWAY CLEANING: I-290 EXTENSION/ ILL 53, EDENS,  
KENNEDY & ELGIN-O'HARE
7. EXPRESSWAY CLEANING: EISENHOWER, STEVENSON, I-55 & DAN RYAN
8. EXPRESSWAY CLEANING: BISHOP FORD, KINGERY, I-55, I-57 & I-80
9. SINGLE LANE WEAVE AND MULTI LANE WEAVE (TC-09)
10. TRAFFIC CONTROL DETAILS FOR FREEWAY SHOULDER CLOSURES  
AND PARTIAL RAMP CLOSURES (TC-17)

STATE STANDARDS

- |           |  |
|-----------|--|
| 701400-11 | APPROACH TO LANE CLOSURE, FREEWAY/EXPRESSWAY                                 |
| 701401-13 | LANE CLOSURE, FREEWAY/EXPRESSWAY   |
| 701411-09 | LANE CLOSURE, MULTILANE AT ENTERANCE/EXIT RAMP FOR SPEEDS > 45 MPH           |
| 701426-09 | LANE CLOSURE, MULTILANE INTERMITTENT OR MOVING OPERATION FOR SPEEDS > 45 MPH |
| 701428-01 | TRAFFIC CONTROL SETUP AND REMOVAL FREEWAY/EXPRESSWAY                         |
| 701901-08 | TRAFFIC CONTROL DEVICES  |

\* COOK, DU PAGE, LAKE AND WILL

PLOT DATE = 2/18/2022  
 FILE NAME = p:\1\1\dot-pub\en\legcon\p\1\DOT Documents\DOT Office\District 1\Projects\Sweeping Contracts\CAD\ata\Design\SweepingContract\2017.dgn  
 PLOT SCALE = 1/8"=1'-0"  
 USER NAME = mndup

REVISIONS		ILLINOIS DEPARTMENT OF TRANSPORTATION
NAME	DATE	
		INDEX OF SHEETS AND STATE STANDARDS
SCALE:	VERT. / HORIZ.	DRAWN BY
DATE		CHECKED BY



F.A. RTE.	SECTION	COUNTY	TOTAL SHEETS	SHEET NO.
VAR. 2022-EXPD-SW		*	10	4
STA.		TO STA.		
FED. ROAD DIST. NO.	ILLINOIS	FED. AID PROJECT		

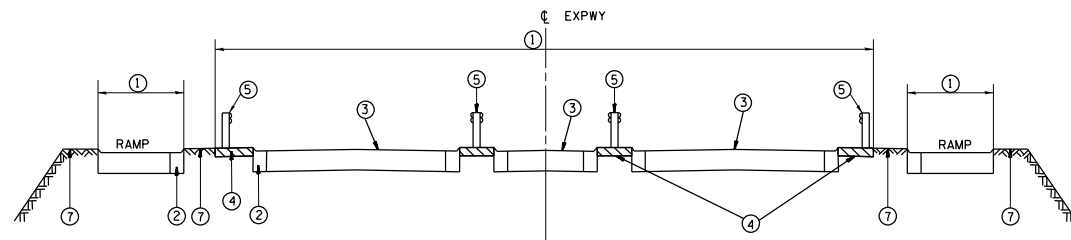
\* COOK, DU PAGE, LAKE AND WILL

LEGEND

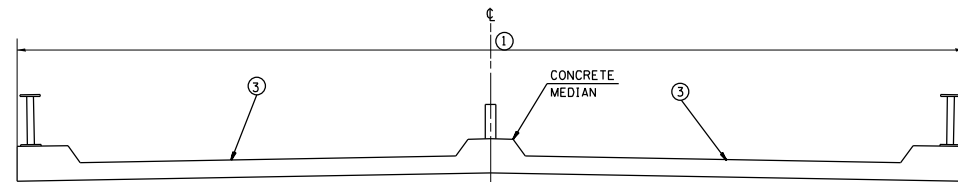
- ① AREA OF ROADWAY CLEANING, DEBRIS AND RUBBISH REMOVAL
- ② CURB AND GUTTER
- ③ TRAVELED ROADWAY
- ④ STABILIZED SHOULDER OR MEDIAN OR SIDEWALK OR NON STABILIZED SURFACES
- ⑤ STEEL PLATE GUARD RAIL (SEE NOTE A)
- ⑥ CONCRETE BARRIER
- ⑦ NON STABILIZED SURFACE
- ⑧ RAISED CONCRETE MEDIAN

NOTE:

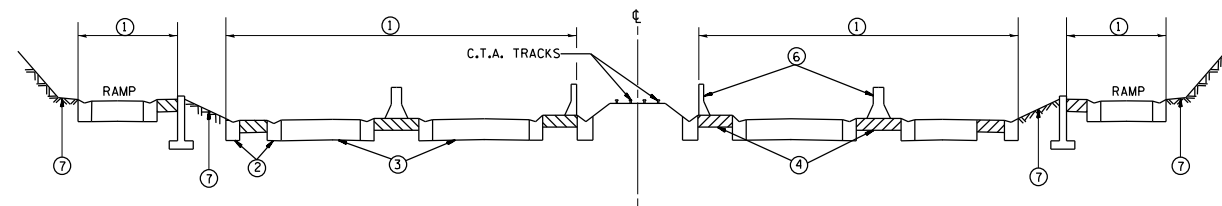
- A) ALL MATERIAL/DEBRIS REGARDLESS OF THE THICKNESS AND SIZE SHALL BE REMOVED AND PROPERLY DISPOSED FROM THE STABILIZED SURFACE.
- B) ALL DRAINAGE STRUCTURES MUST BE CLEARED OF DEBRIS WITHIN THE MEDIAN.



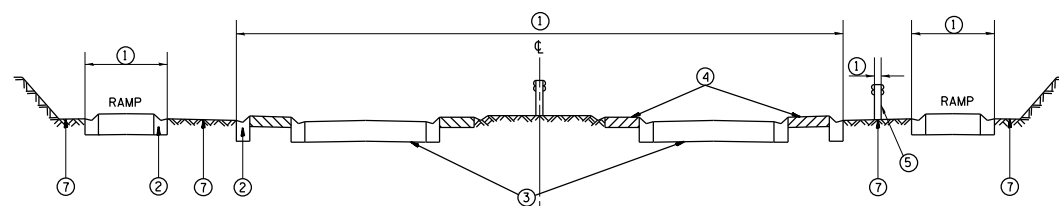
TYPICAL EXPRESSWAY CROSS-SECTION NO. 1



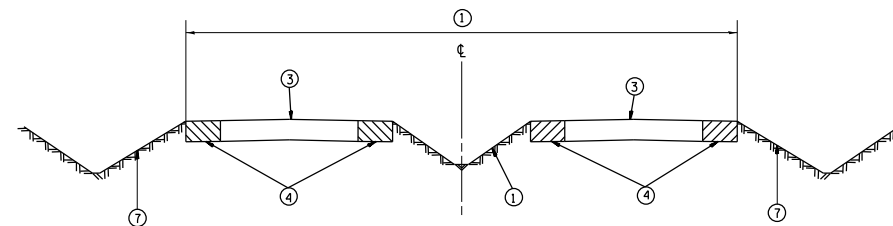
TYPICAL CROSS-SECTION OF ELEVATED ROADWAY  
TYPICAL EXPRESSWAY CROSS-SECTION NO. 2



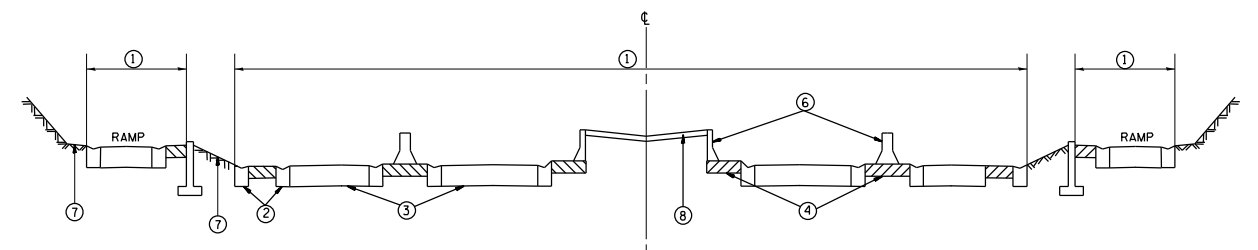
TYPICAL EXPRESSWAY CROSS-SECTION NO. 3



TYPICAL EXPRESSWAY CROSS-SECTION NO. 4



TYPICAL EXPRESSWAY CROSS-SECTION NO. 5



TYPICAL EXPRESSWAY CROSS-SECTION NO. 6

REVISIONS	
NAME	DATE

ILLINOIS DEPARTMENT OF TRANSPORTATION

TYPICAL EXPRESSWAY CROSS-SECTIONS

SCALE: VERT.  
HORIZ.

DRAWN BY  
CHECKED BY

F.A. RTE.	SECTION	COUNTY	TOTAL SHEETS	SHEET NO.
VAR. 2022-EXPD-SW	*		10	5
STA.		TO STA.		
FED. ROAD DIST. NO.	ILLINOIS	FED. AID PROJECT		

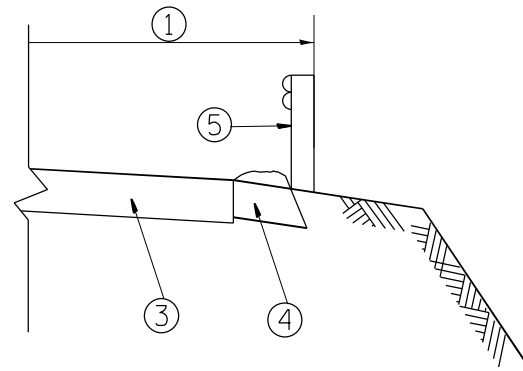
\* COOK, DU PAGE, LAKE AND WILL

LEGEND

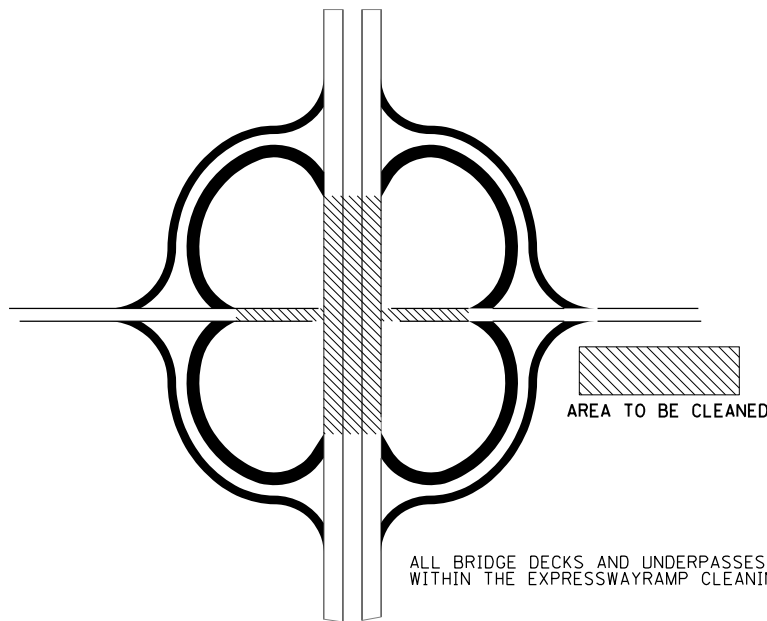
- ① AREA OF ROADWAY CLEANING, DEBRIS AND RUBBISH REMOVAL
- ② CURB AND GUTTER
- ③ TRAVELED ROADWAY
- ④ STABILIZED SHOULDER OR MEDIAN OR SIDEWALK OR NON STABILIZED SURFACES
- ⑤ STEEL PLATE GUARD RAIL (SEE NOTE A)
- ⑥ CONCRETE BARRIER
- ⑦ NON STABILIZED SURFACE
- ⑧ RAISED CONCRETE MEDIAN

NOTE:

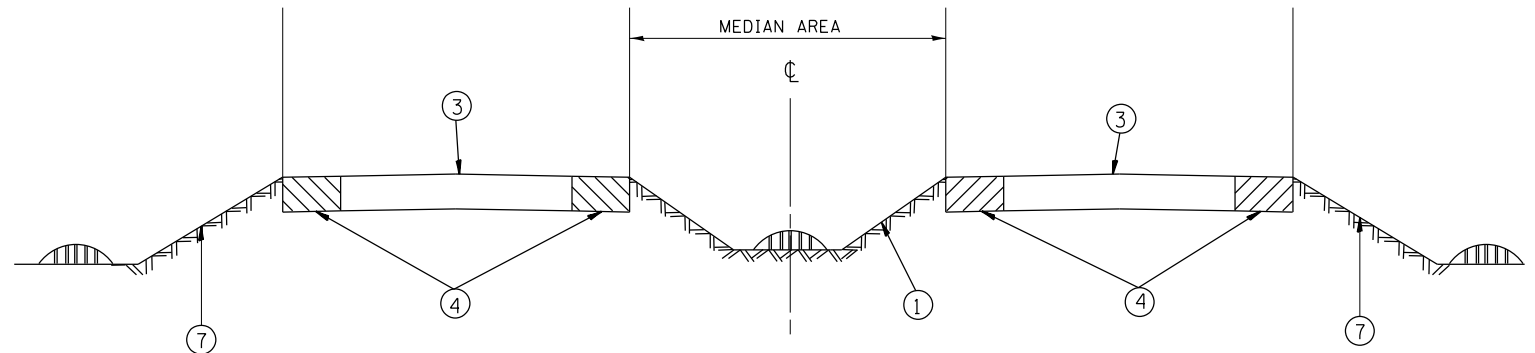
- A) ALL MATERIAL/DEBRIS REGARDLESS OF THE THICKNESS AND SIZE SHALL BE REMOVED AND PROPERLY DISPOSED FROM THE STABILIZED SURFACE.
- B) ALL DRAINAGE STRUCTURES MUST BE CLEARED OF DEBRIS WITHIN THE MEDIAN.



GUARDRAIL LABOR DETAIL



ALL BRIDGE DECKS AND UNDERPASSES MUST BE SWEEPED WITHIN THE EXPRESSWAYRAMP CLEANING CYCLE.



STRUCTURE CLEANING DETAIL

REVISIONS	
NAME	DATE

ILLINOIS DEPARTMENT OF TRANSPORTATION

TYPICAL ROADWAY CLEANING DETAILS

SCALE: VERT. / HORIZ. / DATE

DRAWN BY / CHECKED BY

F.A. RTE.	SECTION	COUNTY	TOTAL SHEETS	SHEET NO.
VAR. 2022-EXPD-SW	*		10	6
STA.		TO STA.		
FED. ROAD DIST. NO.	ILLINOIS	FED. AID PROJECT		

\* COOK, DU PAGE, LAKE AND WILL

- DISTRICT NO. 1
- STATE HIGHWAYS & EXPRESSWAYS WITHIN STATE JURISDICTION (EXCEPT TOLLWAYS)
  - STATE HIGHWAYS & EXPRESSWAYS TO BE CLEANED
  - FUTURE HIGHWAYS
  - VARIOUS AGENCIES HIGHWAYS

**DAY CLEANING ONLY**

I-290 Extension

I-290 from Illinois 83 to Interstate 90 Jane Addams Tollway, Illinois 53 from Interstate 90 Jane Addams Tollway to Lake Cook Road including I-355 from I-290 to Army Trail Road.

Edens Expressway

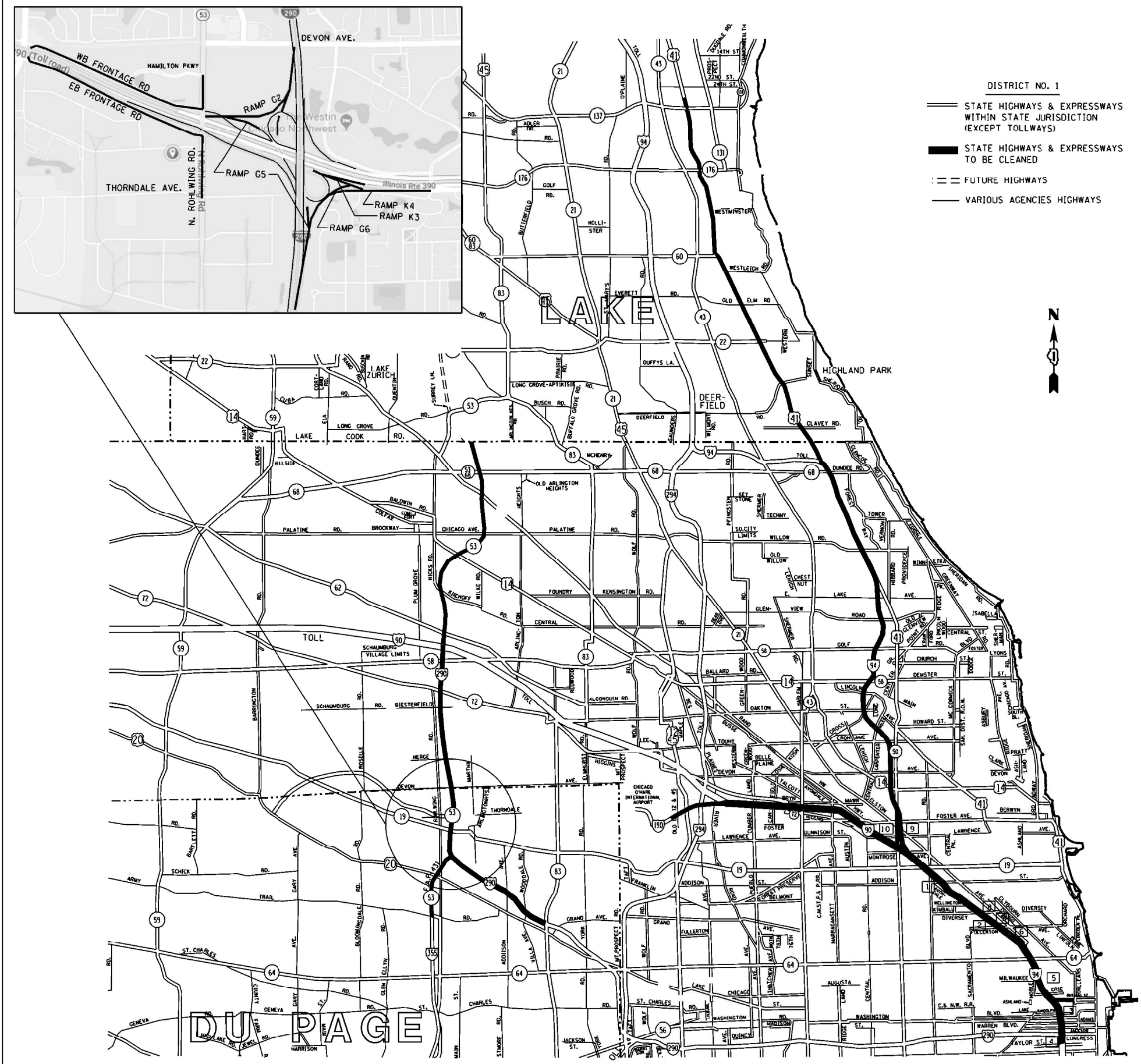
Interstate 94 from Montrose to Dundee Road and U.S. 41 from Dundee Road to 700 lineal feet north of Illinois 137 including two ramps at Clavey Road, two ramps at West Park Avenue, four ramps at Deerpath Road and the entire US 41/Deerfield Road Interchange. Also included is Tower Road from Edens Expressway to Forestway Drive.

Kennedy Expressway

All ramps on Interstate 90/54 from Ogden Ave. to Interstate 90/94 Junction at Edens Expressway, Interstate 90 from Interstate 90/94 Junction at Edens Expressway to Interstate 90/190 Junction, and Interstate 190 from Interstate 90/190 Junction to the East Limits of O'Hare International Airport (Bessie Coleman Rd.) unless ramps are too narrow to allow traffic to pass sweeping crew.

ACCIDENT INVESTIGATION SITES:

1. INBOUND INTERSTATE 90/94 AT ADDISON STREET OFF RAMP.
2. INBOUND INTERSTATE 90/94 ALONG FULLERTON AVENUE UNDER INTERSTATE 90/94.
3. INBOUND INTERSTATE 90/94 IN THE OHIO STREET INFIELD.
4. INTERSTATE 90/94 AT POLK AVENUE.
5. OUTBOUND INTERSTATE 90/94 ALONG DIVISION STREET OFF RAMP.
6. OUTBOUND INTERSTATE 90/94 ALONG INTERSTATE 90/94 AT DAMEN AVENUE.
7. OUTBOUND INTERSTATE 90/94 ALONG FULLERTON AVENUE UNDER INTERSTATE 90/94.
8. OUTBOUND INTERSTATE 90/94 ALONG KIMBALL STREET OFF RAMP.
9. OUTBOUND INTERSTATE 94 ALONG FOSTER AVENUE OFF RAMP.
10. OUTBOUND INTERSTATE 90/94 JUST BEFORE LAWRENCE AVENUE OFF RAMP.



REVISIONS	
NAME	DATE

ILLINOIS DEPARTMENT OF TRANSPORTATION

**EXPRESSWAY CLEANING LOCATION MAP**  
I-290 EXTENSION/ILL. 53, EDENS, KENNEDY

SCALE: VERT. \_\_\_\_\_  
HORIZ. \_\_\_\_\_

DATE \_\_\_\_\_

DRAWN BY \_\_\_\_\_  
CHECKED BY \_\_\_\_\_

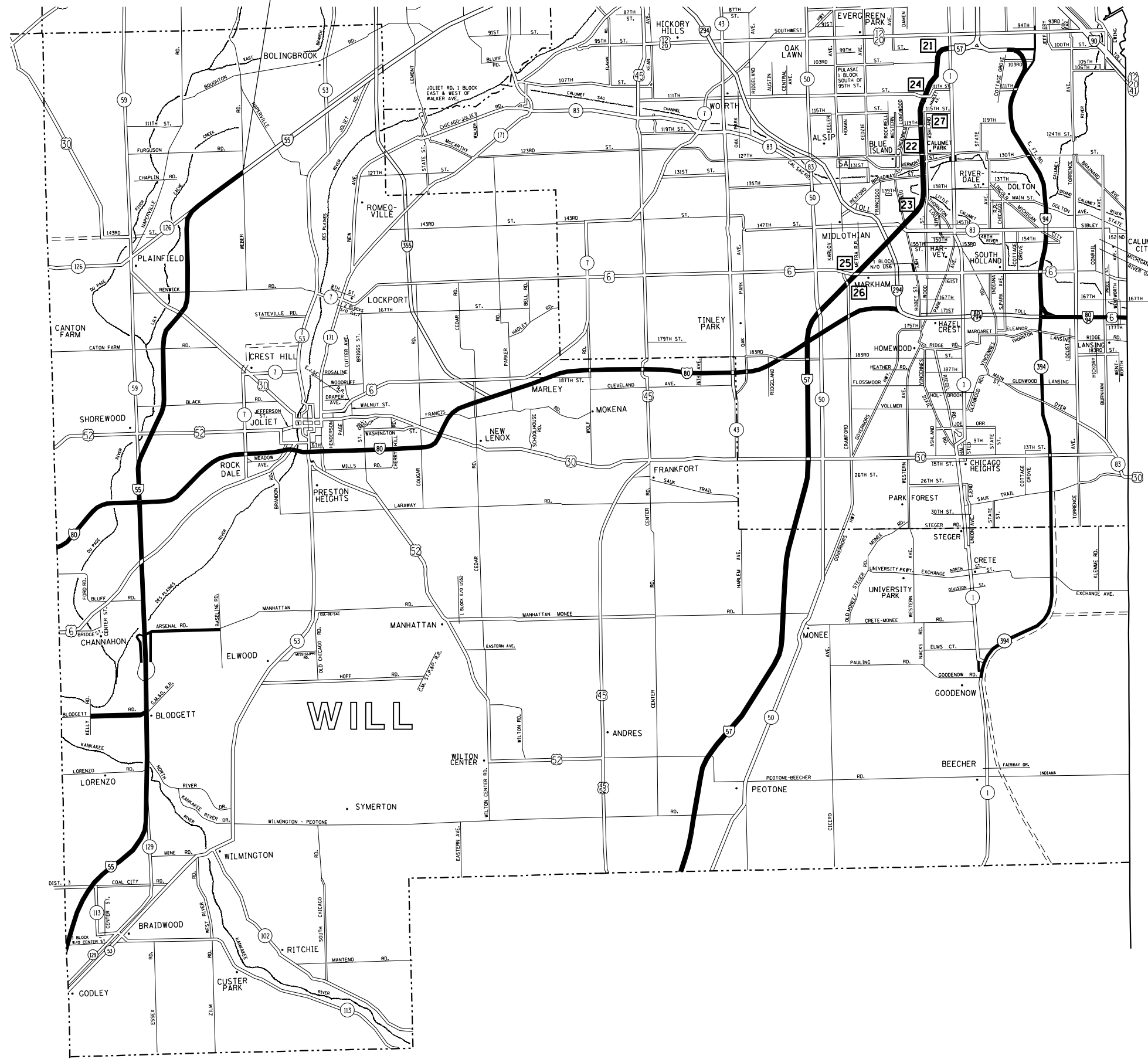
PLOT DATE : 2/18/2022  
 FILE NAME : p:\n\1185\pub\ben\levy\com\p\1101\Documents\1101\_01\1185\1185\_1185.dwg  
 PLOT SCALE : 1/8"=1'-0"  
 USER NAME : mickup



F.A. RTE.	SECTION	COUNTY	TOTAL SHEETS	SHEET NO.
VAR. 2022-EXPD-SW	*		10	8
STA.		TO STA.		
FED. ROAD DIST. NO.	ILLINOIS	FED. AID PROJECT		

\* COOK, DU PAGE, LAKE AND WILL

CONTINUED ON SHEET NO. 8



**DAY CLEANING ONLY**

**Bishop Ford/Kingery Expressway**  
 Interstate 94 from Cottage Grove Avenue to the Indiana State line excluding northbound and southbound left hand side from Cottage Grove Ave. to 171st St., Illinois 394 from Interstate 94 to Goodenow Rd. and the entire Stony Island Avenue - 103rd Street Interchange. Interstate 80 from Interstate 94 to Interstate 294 and all accident investigation sites.

**I-57 Expressway**  
 Interstate 57 from Halsted Street to the Will-Kankakee County Line, in its entirety including the entire I-57 - I-80 interchange and all accident investigation sites, and from Interstate 57 to Interstate 94 Dan Ryan right hand side only.

- [21] - [23] INTERSTATE 57-3 LOCATIONS IN THE MEDIAN BETWEEN HALSTED AND 147th ST.
- [24] OUTBOUND INTERSTATE 57 AT 111th STREET EXIT RAMP
- [25] - [26] INTERSTATE 57 - 2 LOCATIONS ON THE 167th STREET RAMPS
- [27] INTERSTATE 57 - IN THE MEDIAN AT 119th STREET

**I-80 Expressway**  
 Interstate 80 from Interstate 294 Tri-State Tollway/Interstate I-294 to US 30 and ramps I-294 to US 45, including the ramp from eastbound Interstate 80 to northbound Interstate 294 and from southbound Interstate 294 to westbound Interstate 80.

Note: Include the following two (2) ramps at Interstate 294  
 1. Southbound Interstate 294 to westbound Interstate 80.  
 2. Eastbound Interstate 80 to northbound Interstate 294.

NOTE: 3  
 WEST OF WHEELER RD CAN ONLY BE OCCUPIED BY ONE SWEEPING CREW AT A TIME.

INDIANA

- DISTRICT NO. 1
- STATE HIGHWAYS & EXPRESSWAYS WITHIN STATE JURISDICTION (EXCEPT TOLLWAYS)
  - STATE HIGHWAYS & EXPRESSWAYS TO BE CLEANED
  - FUTURE HIGHWAYS
  - VARIOUS AGENCIES HIGHWAYS

REVISIONS	
NAME	DATE

ILLINOIS DEPARTMENT OF TRANSPORTATION

EXPRESSWAY CLEANING LOCATION MAP  
 BISHOP FORD, KINGERY, I-55, I-57 AND I-80

SCALE: VERT. / HORIZ.  
 DATE: / /

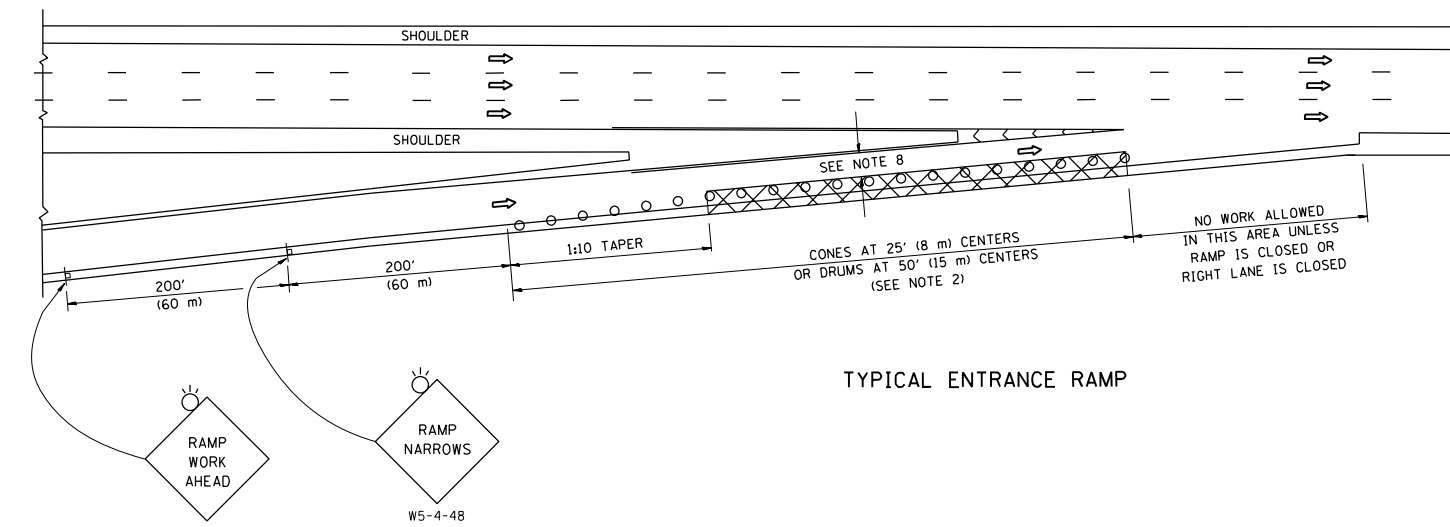
DRAWN BY: / /  
 CHECKED BY: / /

PLOT DATE = 2/18/2022  
 FILE NAME = p:\n\idoc\pub\ben\legcomp\WIDOT\Documents\WIDOT\Office\Sweeping\Projects\Sweeping\_Contracts\CadData\Design\SweepingContract.ecs2017.dgn  
 PLOT SCALE = 1/8"=1'-0"  
 USER NAME = midup

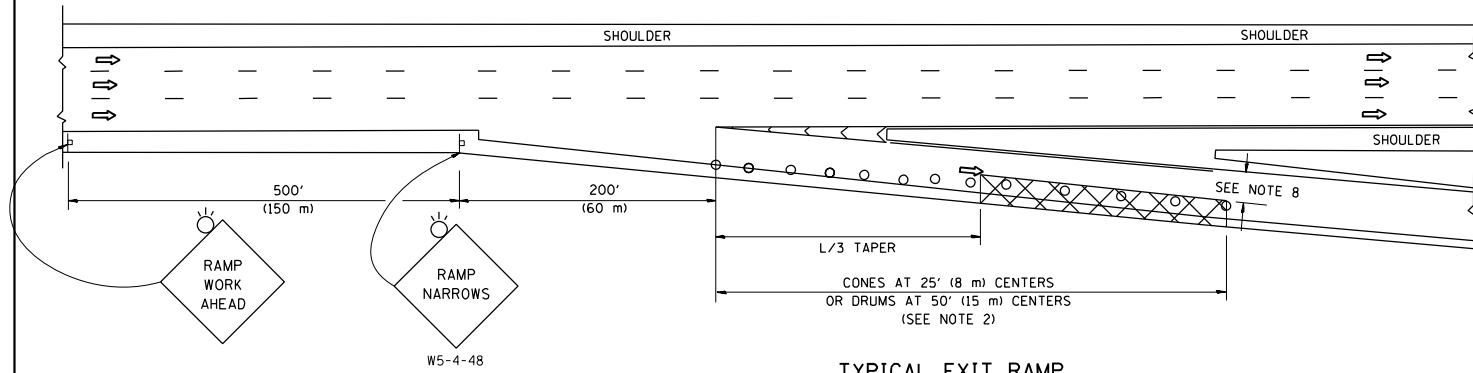




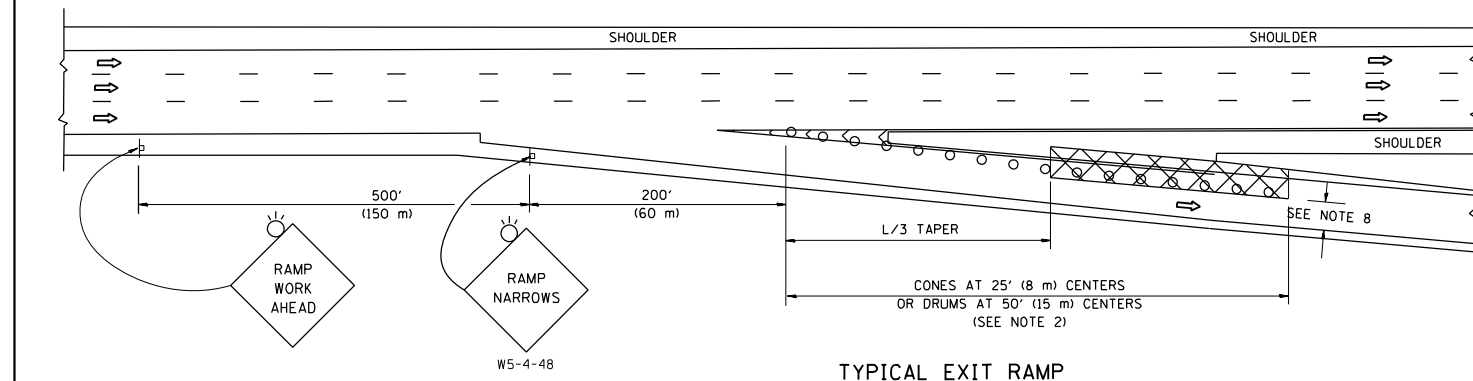
PARTIAL RAMP CLOSURE DETAILS



TYPICAL ENTRANCE RAMP



TYPICAL EXIT RAMP



TYPICAL EXIT RAMP

SYMBOLS

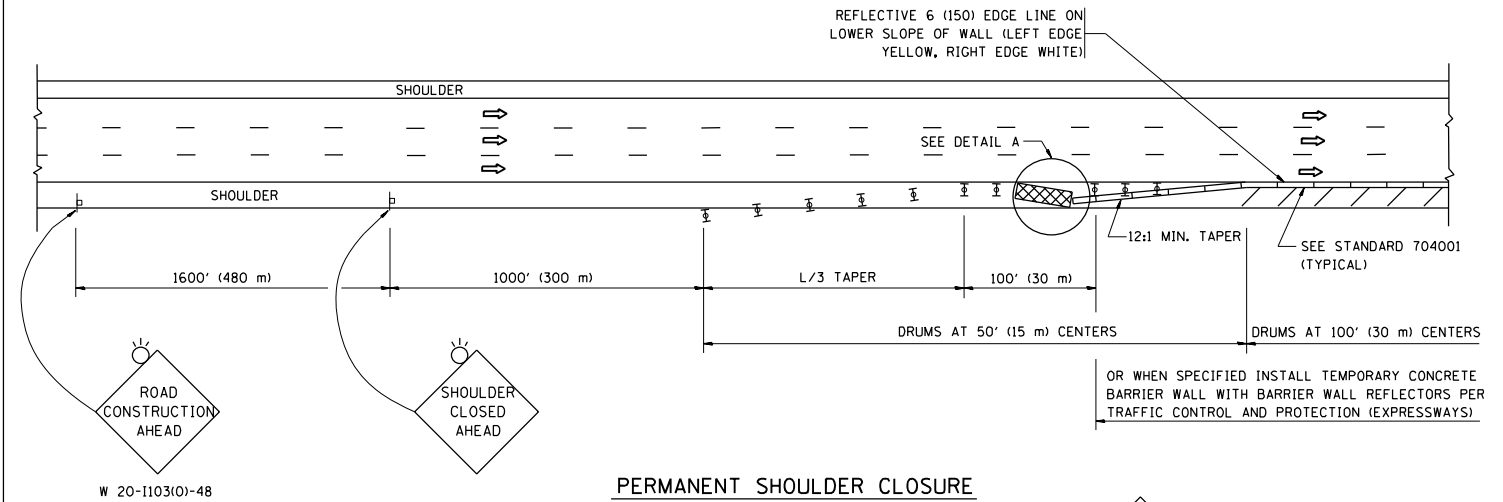
- ACTIVE WORK AREA
- SIGN ON PORTABLE OR PERMANENT SUPPORT
- FLAGGER WITH CONTROL SIGN
- TYPE II BARRICADE OR DRUM
- CONE, DRUM OR BARRICADE
- IMPACT ATTENUATOR OF TYPE AND TEST LEVEL SPECIFIED

GENERAL NOTES

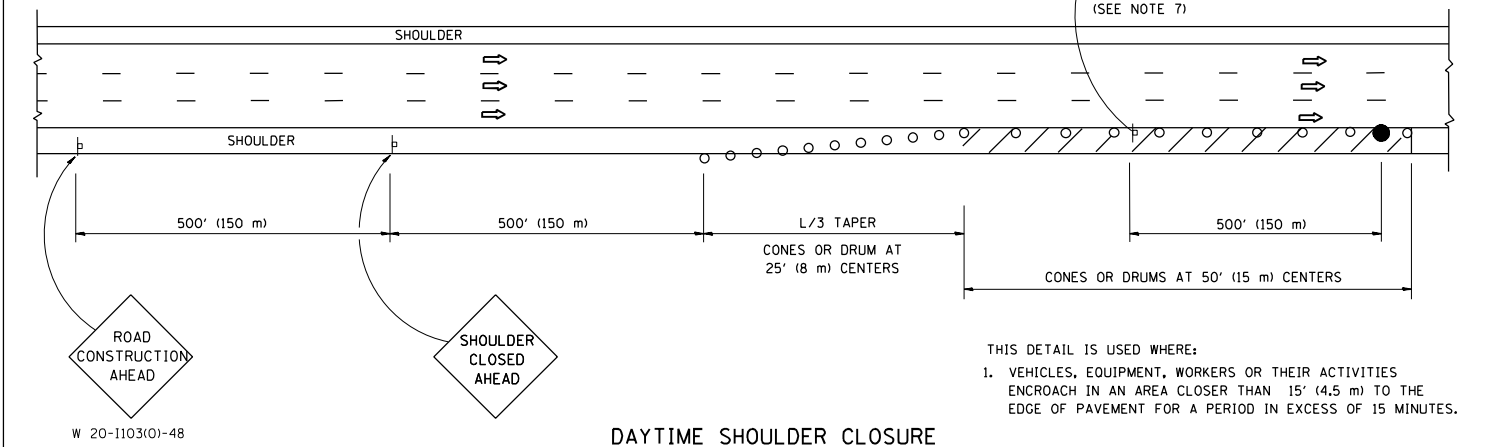
1. THE "L" DISTANCE EQUALS:  

SPEED LIMIT	FORMULAS
45 mph (80 km/h) OR GREATER:	METRIC: $L=0.65(W)(S)$ ENGLISH: $L=(W)(S)$
	W = WIDTH OF OFFSET IN FEET (METERS)
	S = NORMAL POSTED SPEED MPH (KM/H)
2. TYPE II BARRICADES OR DRUMS ARE REQUIRED FOR ALL NIGHTTIME CLOSURES. TYPE II BARRICADES OR DRUMS WITH MONODIRECTIONAL STEADY BURN LIGHTS ARE REQUIRED FOR DELINEATING OBSTACLES, EXCAVATIONS, OR HAZARDS EXCEEDING 100 FT (30m) IN LENGTH AT NIGHT.
3. ALL SIGNS SHALL BE POST MOUNTED IF THE CLOSURE TIME EXCEEDS FOUR DAYS.
4. FLASHING LIGHTS SHALL BE USED DURING THE HOURS OF DARKNESS AND SHALL BE INSTALLED ABOVE THE FIRST TWO SETS OF SIGNS.

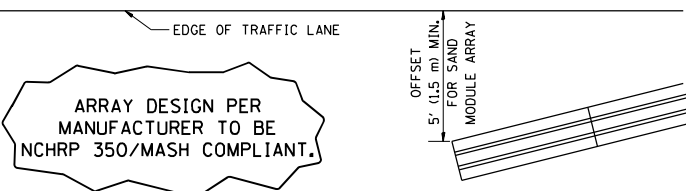
SHOULDER CLOSURE DETAILS



PERMANENT SHOULDER CLOSURE



DAYTIME SHOULDER CLOSURE



DETAIL "A"  
IMPACT ATTENUATOR, TEMPORARY  
(SEE NOTE 5)

5. THE IMPACT ATTENUATOR, TEMPORARY IS NOT REQUIRED WHEN THE TEMPORARY CONCRETE BARRIER WALL IS PROTECTED BY OR IS TIED INTO THE EXISTING GUARDRAIL. IF OFFSET IS LESS THAN 5 FEET USE NARROW USE TYPE DEVICE TO MEET NCHRP350/MASH.
6. AUTHORIZATION FROM THE DISTRICT'S BUREAU OF TRAFFIC IS REQUIRED FOR ALL FREEWAY CLOSURES.
7. THE FLAGGER AND FLAGGER SIGN ARE REQUIRED AT THE ABOVE WORK SITES WHEN:
  - a. FOUR OR MORE WORK VEHICLES ENTER THE TRAFFIC LANES IN A ONE HOUR PERIOD.
  - b. THE WORK ACTIVITY REQUIRES FREQUENT ENCRANCHMENT INTO THE LANE OPEN TO TRAFFIC.
 THE FLAGGER SHALL BE STATIONED APPROXIMATELY 100' (30 m) TO 200' (60 m) IN ADVANCE OF THE WORKERS.
8. 12' MIN. WIDTH TANGENT SECTION  
16' MIN. WIDTH CURVE SECTION.

ALL DIMENSIONS ARE IN INCHES (MILLIMETERS) UNLESS OTHERWISE SHOWN.

\* COOK, DU PAGE, LAKE AND WILL

FILE NAME =	USER NAME = midyja	DESIGNED -	REVISED - S.P.B. 01-07
pw:\idot-pw\bentley.com\PROJECTS\SWEEPING CONTRACTS\2022-EXPD-SW	PROJECT: SWEEPING CONTRACTS	DRAWN -	REVISED - S.P.B. 12-09
Default	PLOT SCALE = 100.0000' / in.	CHECKED -	REVISED - M.D. 06-13
	PLOT DATE = 2/10/2022	DATE -	REVISED - M.D. 01-18

STATE OF ILLINOIS  
DEPARTMENT OF TRANSPORTATION

TRAFFIC CONTROL DETAILS FOR FREEWAY  
SHOULDER CLOSURES AND PARTIAL RAMP CLOSURES

SCALE: NONE SHEET 1 OF 1 SHEETS STA. TO STA.

F.A. RTE.	SECTION	COUNTY	TOTAL SHEETS	SHEET NO.
	2022-EXPD-SW	*	10	10
	TC-17		CONTRACT NO. 62R49	
ILLINOIS FED. AID PROJECT				