

STATE OF ILLINOIS
DEPARTMENT OF TRANSPORTATION

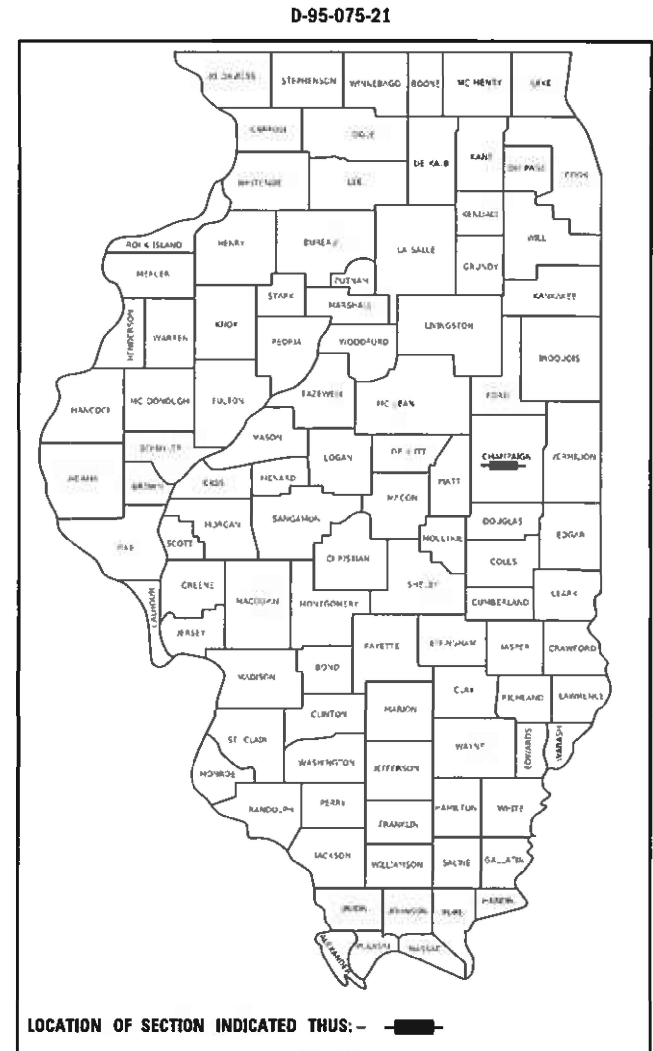
F.A.I. RTE.	SECTION	COUNTY	TOTAL SHEETS	SHEET NO.
74	HMLT2022-1	CHAMPAIGN	12	1
		ILLINOIS	CONTRACT NO. 70F71	

FOR INDEX OF SHEETS, SEE SHEET NO. 2
FOR SUMMARY OF QUANTITIES SHEETS, SEE SHEET NO. 3

PROPOSED
HIGHWAY PLANS

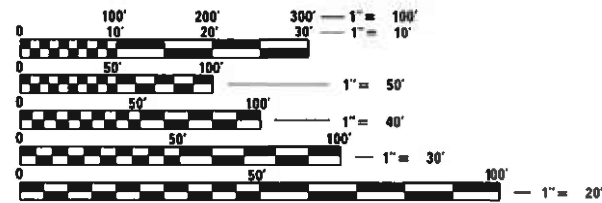
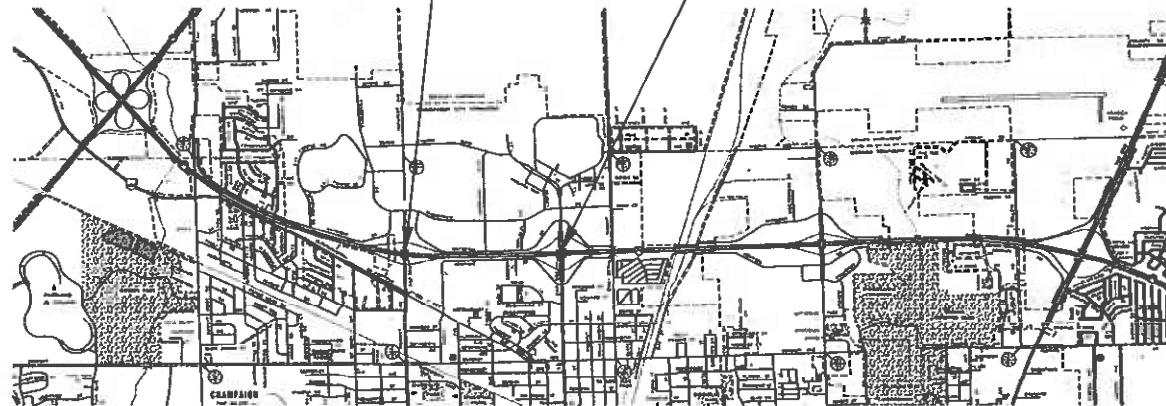
F.A.I. ROUTE 74 (I-74)
SECTION HMLT2022-1
PROJECT NHPP-IPBJ(897)
INTERCHANGE LIGHTING IMPROVEMENTS
CHAMPAIGN COUNTY

C-95-075-21



I-74 AT FAU 7197 (PROSPECT AVE NORTH OF I-74)
I-74 AT FAP 804 (PROSPECT AVE SOUTH OF I-74)

I-74 AT FAU 7166 (NEIL ST NORTH OF I-74)
I-74 AT FAP 802 (NEIL ST SOUTH OF I-74)



FULL SIZE PLANS HAVE BEEN PREPARED USING STANDARD ENGINEERING SCALES. REDUCED SIZED PLANS WILL NOT CONFORM TO STANDARD SCALES. IN MAKING MEASUREMENTS ON REDUCED PLANS, THE ABOVE SCALES MAY BE USED.

J.U.L.I.E.
JOINT UTILITY LOCATION INFORMATION FOR EXCAVATORS
1-800-892-0123
OR 811

PROJECT ENGINEER: JEFF ALLEN
TELEPHONE: (217)465-4181

CONTRACT NO. 70F71

STATE OF ILLINOIS
DEPARTMENT OF TRANSPORTATION

SUBMITTED 1/31 2022
Kensil A. Barnett
REGIONAL ENGINEER

May 13, 2022 [Signature]
ENGINEER OF DESIGN AND ENVIRONMENT

May 13, 2022 [Signature]
DIRECTOR OF HIGHWAYS PROJECT IMPLEMENTATION

PRINTED BY THE AUTHORITY
OF THE STATE OF ILLINOIS

GENERAL NOTES

- G.N.-100 ENGLISH UNITS OF MEASUREMENT SHAL GOVERN OVER AND SUPERSEDE ANY METRIC UNITS SHOWN IN THIS CONTRACT. WHERE INCLUDED, METRIC UNITS ARE FOR INFORMATION ONLY.
- G.N.-100A ELECTRONIC FILES AND/OR ELECTRONIC SURVEY INFORMATION INCLUDING CADD FILES WILL NOT BE AVAILABLE TO THE CONTRACTOR.
- G.N.-105.07C EXISTING STATE-OWNED AND MAINTAINED UNDERGROUND UTILITY FACILITIES EXIST WITHIN THE ROW. THE DEPARTMENT IS NOT A MEMBER OF JULIE AND DOES NOT LOCATE IT'S OWN FACILITIES. THE CONTRACTOR SHALL BE RESPONSIBLE AT THEIR OWN EXPENSE FOR SECURING AN APPROVED LOCATING FIRM TO LOCATE ALL EXISTING IDOT UNDERGROUND FACILITIES PRIOR TO COMMENCING ANY EXCAVATION, PER THE REQUIREMENTS OF ARTICLE 803 OF THE STANDARD SPECIFICATIONS. UTILITY LOCATES MAY ALSO BE REQUIRED OUTSIDE THE PROJECT LIMITS, SUCH AS FOR TRAFFIC CONTROL SIGNING AND OTHER ITEMS. THE CONTRACTOR MAY OBTAIN, ON REQUEST, PLANS OF EXISTING ELECTRICAL FACILITIES FROM THE DEPARTMENT. FOR FURTHER INFORMATION, THE CONTRACTOR MAY CONTACT THE DISTRICT TRAFFIC OPERATIONS ENGINEER, GARY SIMS, AT 217-251-4859.
- THE CONTRACTOR SHALL ALSO BE RESPONSIBLE FOR LOCATION AND PROVIDING PROTECTION FOR FACILITIES DURING ALL PHASES OF CONSTRUCTION. IF, AT ANY TIME, THE FACILITIES ARE DAMAGED, THE CONTRACTOR SHALL IMMEDIATELY NOTIFY THE DEPARTMENT AND MAKE ALL NECESSARY ARRANGEMENTS FOR REPAIR TO THE SATISFACTION OF THE ENGINEER. THIS WORK SHALL BE INCLUDED IN THE CONTRACT BID PRICE AND NO ADDITIONAL COMPENSATION WILL BE ALLOWED.

INDEX OF SHEETS

SHEET NO.	DESCRIPTION
1.	COVER SHEET
2.	GENERAL NOTES, INDEX OF SHEETS AND LIST OF STANDARDS
3.	SUMMARY OF QUANTITIES
4. - 8.	PROPOSED LIGHTING PLAN I-74 & PROSPECT AVE.
9. - 11.	PROPOSED LIGHTING PLAN I-74 & NEIL ST.
12.	NIGHT TIME INSPECTION OF LIGHTING

LIST OF STANDARDS

STANDARD NO.	NAME OF STANDARD
701101-05	OFF-ROAD OPERATIONS, MULTILANE, 15' (4.5 M) TO 24" (600 mm) FROM PAVEMENT EDGE
701456-05	PARTIAL EXIT RAMP CLOSURE, FREEWAY EXPRESSWAY
701606-10	URBAN SINGLE LANE CLOSURE, MULTILANE, 2W WITH MOUNTABLE MEDIAN
701901-08	TRAFFIC CONTROL DEVICES
821101-02	LUMINAIRE WIRING IN POLE
830006-05	LIGHT POLE ALUMINUM DAVIT ARM
838001-01	BREAKAWAY DEVICES
000001-08	STANDARD SYMBOLS, ABBREVIATIONS AND PATTERNS
001006	DECIMAL OF AN INCH AND OF A FOOT

MODEL: I:\MODEL\MMFE
 FILE: MMFE.dwg
 USER: plersonbr
 DATE: 1/18/2022
 PLOT SCALE: 40,0000 * / in.
 PLOT DATE: 1/18/2022

USER NAME = plersonbr	DESIGNED -	REVISED -
	DRAWN -	REVISED -
PLOT SCALE = 40,0000 * / in.	CHECKED -	REVISED -
PLOT DATE = 1/18/2022	DATE -	REVISED -

**STATE OF ILLINOIS
DEPARTMENT OF TRANSPORTATION**

**GENERAL NOTES, LIST OF STANDARDS
& INDEX OF SHEETS**

SCALE: NONE SHEET 1 OF 1 SHEETS STA. TO STA.

F.A.I. RTE.	SECTION	COUNTY	TOTAL SHEETS	SHEET NO.
74	HMLT2022-1	CHAMPAIGN	12	2
CONTRACT NO. 70F71				
ILLINOIS FED. AID PROJECT				

SUMMARY OF QUANTITIES

LOCATION FAI 74
 URBAN
 LIGHTING
 CHAMPAIGN COUNTY
 FUNDING 90% FEDERAL
 10% STATE

 CONSTRUCTION 0021
 CODE

CODE NO.	ITEM	UNIT	TOTAL QUANTITY
67100100	MOBILIZATION	L SUM	1.0
70100825	TRAFFIC CONTROL AND PROTECTION, STANDARD 701456	L SUM	1.0
70102625	TRAFFIC CONTROL AND PROTECTION, STANDARD 701606	L SUM	1.0
82110008	LUMINAIRE, LED, ROADWAY, OUTPUT DESIGNATION H	EACH	42.0
83003600	LIGHT POLE, ALUMINUM, 45 FT. M.H., 15 FT. DAVIT ARM	EACH	42.0
83800650	BREAKAWAY DEVICE, COUPLING WITH STAINLESS STEEL SCREEN	EACH	168.0
84200600	REMOVAL OF LIGHTING UNIT, NO SALVAGE	EACH	42.0

MODEL: \\MODEL\MAME
 FILE: \\MAILS_P\public\paw_bentley.com\PIV\DOT\Documents\DOT_Offices\Dir\dr: S:\Project\DOT\Documents\CAD\Sheets\DOT71\shb_SQ.dgn

**I-74 & PROSPECT AVE
CONTROLLER 51**

STATION	POLE NUMBER ON AS BUILT	POLE NUMBER IN FIELD	LOCATION
17+60	22	129	PROSPECT AVE
16+50	21	130	PROSPECT AVE
15+00	23	131	PROSPECT AVE
13+50	20	132	PROSPECT AVE
50+75	24	133	EB ON RAMP
12+60	25	134	PROSPECT AVE
11+10	26	135	PROSPECT AVE
53+50	53	136	EB ON RAMP
56+20	52	137	EB ON RAMP
19+20	32	138	WB OFF RAMP
21+95	31	139	WB OFF RAMP
24+75	30	140	WB OFF RAMP
27+50	29	141	WB OFF RAMP
8+50	27	142	PROSPECT AVE
7+50	42	143	PROSPECT AVE
10+75	38	144	WB ON RAMP
6+50	28	145	PROSPECT AVE
5+00	37	146	PROSPECT AVE
3+50	33	147	PROSPECT AVE
1+80	36	148	PROSPECT AVE
0+00	-	149	PROSPECT AVE - ORIGINAL LOCATION MOVED

LEGEND



EXISTING LIGHT POLE TO REMAIN



**EXISTING LIGHT POLE TO BE REPLACED WITH
NEW LIGHT POLE, ALUMINUM, 45 FT M.H.,
15 FT DAVIT ARM AND LUMINAIRE, LED,
HORIZONTAL MOUNT, MEDIUM WATTAGE**



**POLES ARE IDENTIFIED WITH POLYGON
INDICATING CIRCUIT NUMBER OVER POLE NUMBER**

MODEL: \\MODEL\MAME
 FILE: \\MAILS_P\public\paw_bentley.com\PIV\DOT\Documents\DOT_Offices\Dir\dir: S\Project\510771\CAD\data\CAD\sheet\510771_Lght_Lighting_Details.dgn

USER NAME = plersonbr	DESIGNED -	REVISED -
	DRAWN -	REVISED -
PLOT SCALE = 40,0000 * / in.	CHECKED -	REVISED -
PLOT DATE = 1/18/2022	DATE -	REVISED -

**STATE OF ILLINOIS
DEPARTMENT OF TRANSPORTATION**

**I-74 & PROSPECT AVE
CONTROLLER 51**

SCALE: SHEET 1 OF 5 SHEETS STA. TO STA.

F.A.I. RTE.	SECTION	COUNTY	TOTAL SHEETS	SHEET NO.
74	HMLT2022-1	CHAMPAIGN	12	4
			CONTRACT NO. 70F71	
		ILLINOIS	FED. AID PROJECT	

PROJECT NO.	SECTION	COUNTY	TOTAL SHEETS	SHEET NO.
F.A.I. 74	SEC. (14B) BRK	CHAMPAIGN	254	140

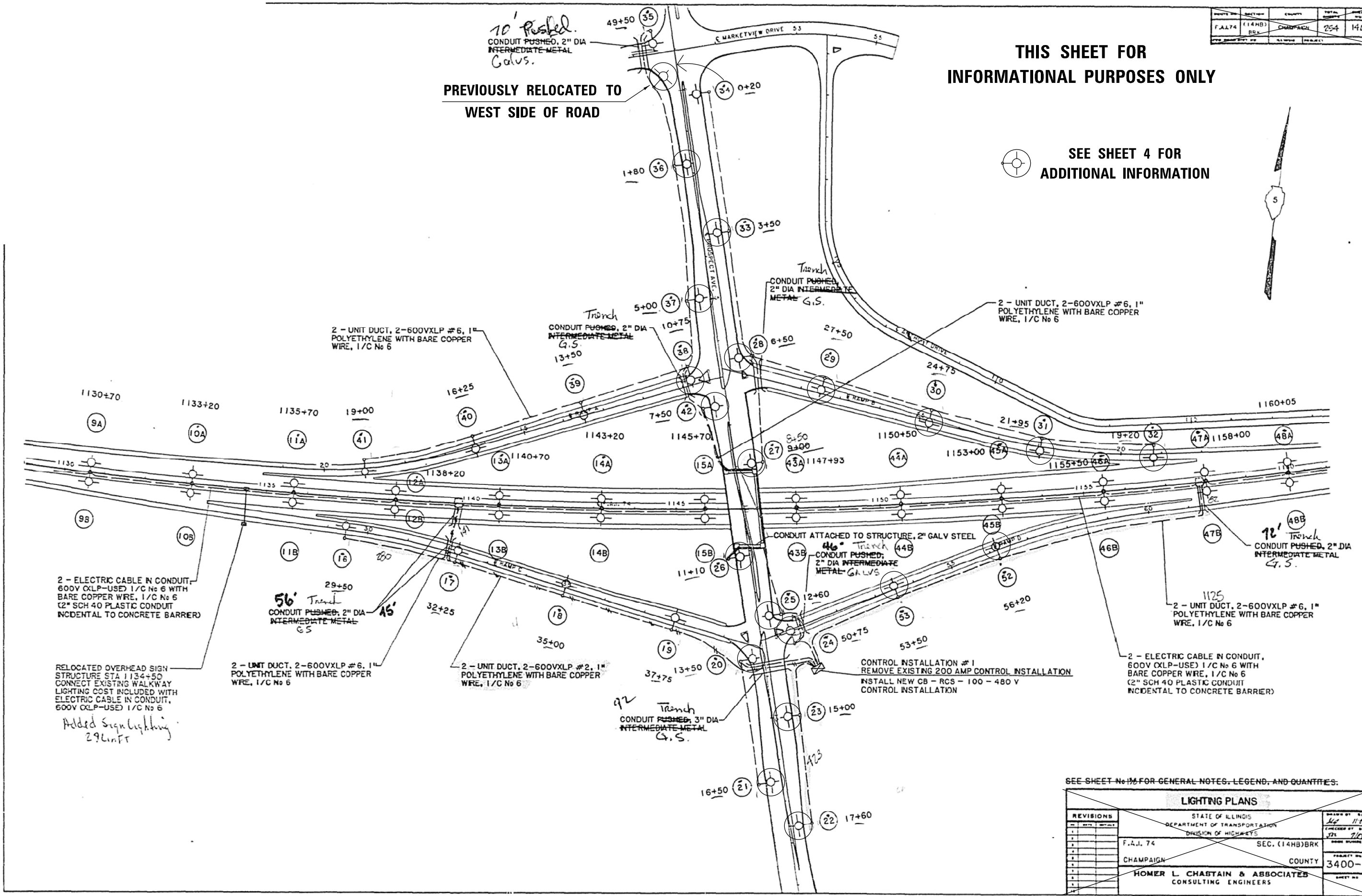
**THIS SHEET FOR
INFORMATIONAL PURPOSES ONLY**

SEE SHEET 4 FOR
ADDITIONAL INFORMATION



**PREVIOUSLY RELOCATED TO
WEST SIDE OF ROAD**

10' Pushed.
CONDUIT PUSHED, 2" DIA
INTERMEDIATE METAL
GALV.



2 - ELECTRIC CABLE IN CONDUIT,
600V OXLP-USE) 1/C No 6 WITH
BARE COPPER WRE, 1/C No 6
(2" SCH 40 PLASTIC CONDUIT
INCIDENTAL TO CONCRETE BARRIER)

RELOCATED OVERHEAD SIGN
STRUCTURE STA 1134+50
CONNECT EXISTING WALKWAY
LIGHTING COST INCLUDED WITH
ELECTRIC CABLE IN CONDUIT,
600V OXLP-USE) 1/C No 6
*Added Sign Lighting
296LinFt*

2 - UNIT DUCT, 2-600VXLP #6, 1"
POLYETHYLENE WITH BARE COPPER
WRE, 1/C No 6

2 - UNIT DUCT, 2-600VXLP #2, 1"
POLYETHYLENE WITH BARE COPPER
WRE, 1/C No 6

CONTROL INSTALLATION #1
REMOVE EXISTING 200 AMP CONTROL INSTALLATION
INSTALL NEW CB - RCS - 100 - 480 V
CONTROL INSTALLATION

2 - ELECTRIC CABLE IN CONDUIT,
600V OXLP-USE) 1/C No 6 WITH
BARE COPPER WRE, 1/C No 6
(2" SCH 40 PLASTIC CONDUIT
INCIDENTAL TO CONCRETE BARRIER)

SEE SHEET No. 136 FOR GENERAL NOTES, LEGEND, AND QUANTITIES.

REVISIONS			
NO.	DATE	DESCRIPTION	BY

LIGHTING PLANS		STATE OF ILLINOIS	DESIGNED BY DATE
		DEPARTMENT OF TRANSPORTATION	<i>4/22/11</i>
		DIVISION OF HIGHWAYS	CHECKED BY DATE
			<i>JTS 1/11</i>
F.A.I. 74	SEC. (14B)BRK	PROJECT NO.	
CHAMPAIGN	COUNTY	3400-3	
HOMER L. CHASTAIN & ASSOCIATES		SHEET NO.	
CONSULTING ENGINEERS			

STA. 1130+00 TO STA. 1160+00

MODEL: I:\MODEL\NAME: FILE: NAME: PROJECT: I:\PROJECT\1057071\1057071\1057071\Lighting_Details.dwg

USER NAME = plersonbr	DESIGNED -	REVISED -
	DRAWN -	REVISED -
PLOT SCALE = 40,0000 * / in.	CHECKED -	REVISED -
PLOT DATE = 1/18/2022	DATE -	REVISED -

**STATE OF ILLINOIS
DEPARTMENT OF TRANSPORTATION**

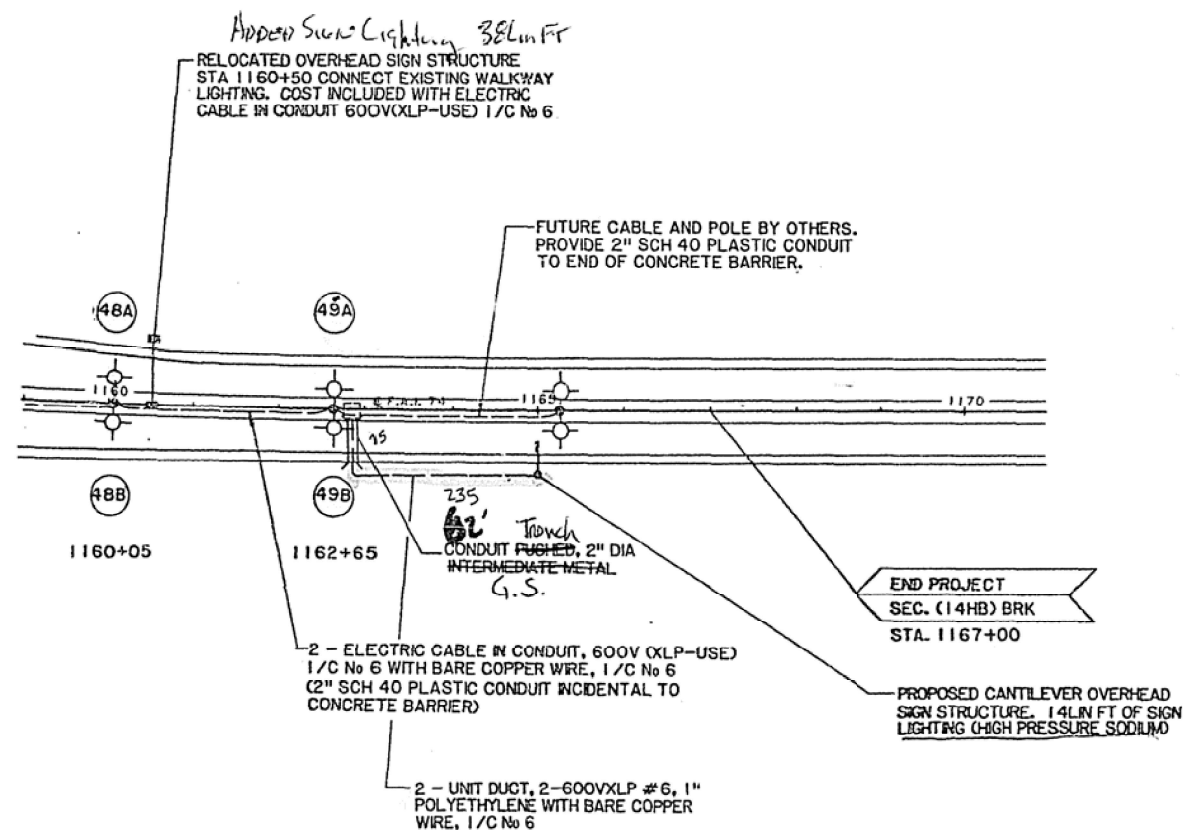
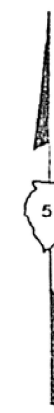
**I-74 & PROSPECT AVE
CONTROLLER 51**

SCALE: SHEET 3 OF 5 SHEETS STA. TO STA.

F.A.I. RTE.	SECTION	COUNTY	TOTAL SHEETS	SHEET NO.
74	HMLT2022-1	CHAMPAIGN	12	6
			CONTRACT NO. 70F71	
ILLINOIS FED. AID PROJECT				

ROUTE NO.	SECTION	COUNTY	TOTAL SHEETS	SHEET NO.
F.A.I. 74	(14HB) BRK	CHAMPAIGN	264	141
PROJECT SHEET NO.	ALTERNATE	PROJECT		

THIS SHEET FOR
INFORMATIONAL PURPOSES ONLY



SEE SHEET No. 130 FOR GENERAL NOTES, LEGEND, AND QUANTITIES.

REVISIONS		DATE	
NO.	DATE	BY	REVISION
1			
2			
3			
4			
5			
6			
7			
8			
9			
10			

LIGHTING PLANS			
STATE OF ILLINOIS DEPARTMENT OF TRANSPORTATION DIVISION OF HIGHWAYS			
F.A.I. 74	SEC. (14HB)BRK	PROJECT NO.	3400-3
CHAMPAIGN	COUNTY	SHEET NO.	
HOMER L. CHASTAIN & ASSOCIATES CONSULTING ENGINEERS			

STA. 1160+00 TO STA. 1170+00

USER NAME = plersonbr	DESIGNED -	REVISED -
	DRAWN -	REVISED -
PLOT SCALE = 40,0000 * / in.	CHECKED -	REVISED -
PLOT DATE = 1/18/2022	DATE -	REVISED -

STATE OF ILLINOIS
DEPARTMENT OF TRANSPORTATION

I-74 & PROSPECT AVE
CONTROLLER 51

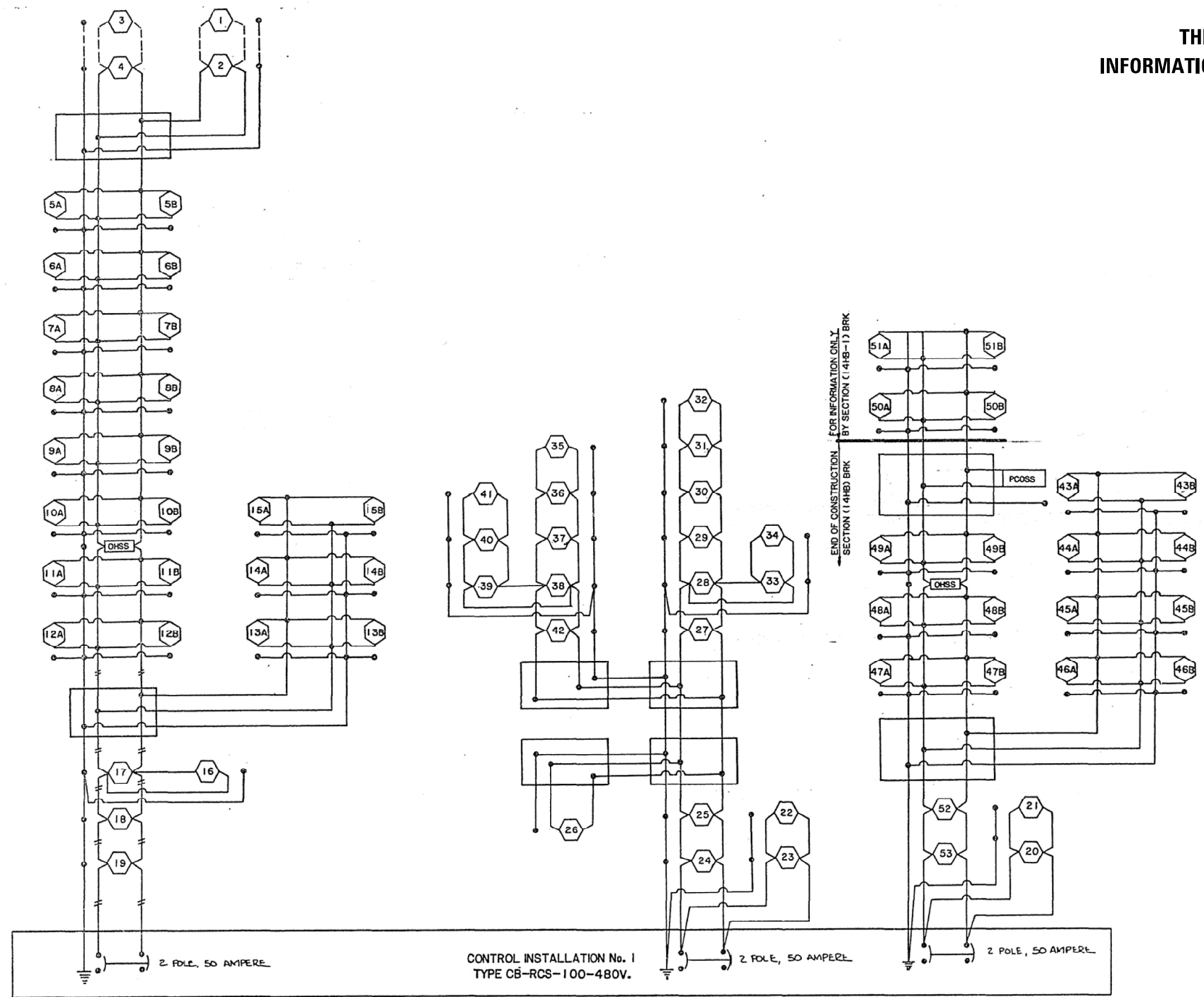
SCALE: SHEET 4 OF 5 SHEETS STA. TO STA.

F.A.I. RTE.	SECTION	COUNTY	TOTAL SHEETS	SHEET NO.
74	HMLT2022-1	CHAMPAIGN	12	7
			CONTRACT NO. 70F71	
ILLINOIS FED. AID PROJECT				

MODEL: I:\MODEL\NAME: FILE: NAME: P:\Public\paw_beaufay.com\FWIDOT\Documents\DOT Office\Dir\dir: S:\Project\1057077\1057077\CAD\Drawings\CAD\Drawings\Lighting_Details.dwg

PROJECT NO.	SECTION	COUNTY	TOTAL SHEETS	SHEET NO.
F.A.I. 74	(14HB) BRK	CHAMPAIGN	254	192
FED. ROAD DIST. NO.	ILLINOIS	PROJECT		

THIS SHEET FOR
INFORMATIONAL PURPOSES ONLY



OHSS DENOTES OVERHEAD SIGN STRUCTURE
PCOSS DENOTES PROPOSED CANTILEVER OVERHEAD SIGN STRUCTURE

SEE SHEET NO. 192 FOR GENERAL NOTES, LEGEND, AND QUANTITIES

REVISIONS		LIGHTING PLANS	
NO.	DATE	STATE OF ILLINOIS DEPARTMENT OF TRANSPORTATION DIVISION OF HIGHWAYS	
1		DRAWN BY: <i>DKR</i>	
2		CHECKED BY: <i>JTC</i>	
3		F.A.I. 74	SEC. (14HB) BRK
4		CHAMPAIGN	COUNTY
5		PROJECT NO. 3400-3	
6		HOMER L. CHASTAIN & ASSOCIATES CONSULTING ENGINEERS DECATUR, ILLINOIS	

USER NAME = plersonbr	DESIGNED -	REVISED -
	DRAWN -	REVISED -
PLOT SCALE = 40,0000 * / in.	CHECKED -	REVISED -
PLOT DATE = 1/18/2022	DATE -	REVISED -

STATE OF ILLINOIS
DEPARTMENT OF TRANSPORTATION

I-74 & PROSPECT AVE
CONTROLLER 51

SCALE: SHEET 5 OF 5 SHEETS STA. TO STA.

F.A.I. RTE.	SECTION	COUNTY	TOTAL SHEETS	SHEET NO.
74	HMLT2022-1	CHAMPAIGN	12	8
			CONTRACT NO. 70F71	
			ILLINOIS FED. AID PROJECT	

MODEL: 4300ELNAMES FILE: 4300ELNAMES\p\plersonbr\p\p\DOT Documents\DOT Office\Dir\Dir: 5\Project\1057077\CAD\Drawn\CAD\Sheet\1057077\Lighting_Details.dwg

**I-74 & NEIL ST
CONTROLLER 52**

STATION	POLE NUMBER ON AS BUILT	POLE NUMBER IN FIELD	LOCATION
131+65	8	113	EB OFF RAMP
134+30	9	114	EB OFF RAMP
137+00	10	115	EB OFF RAMP
22+50	13	116	NEIL ST
19+90	11	117	NEIL ST
50+75	12	118	EB ON RAMP
18+60	14	119	NEIL ST
16+25	15	120	NEIL ST
13+45	16	121	NEIL ST
11+30	18	122	NEIL ST
29+35	17	123	WB OFF RAMP
9+85	23	124	NEIL ST
7+50	22	125	NEIL ST
153+50	28	126	EB ON RAMP
156+00	29	127	EB ON RAMP
119+15	27	128	WB OFF RAMP
121+70	26	129	WB OFF RAMP - OMITTED - REPLACED IN 2020
124+45	25	130	WB OFF RAMP
127+00	24	131	WB OFF RAMP
112+00	19	132	WB ON RAMP
114+75	20	133	WB ON RAMP
117+50	21	134	WB ON RAMP

LEGEND



EXISTING LIGHT POLE TO REMAIN



**EXISTING LIGHT POLE TO BE REPLACED WITH
NEW LIGHT POLE, ALUMINUM, 45 FT M.H.,
15 FT DAVIT ARM AND LUMINAIRE, LED,
HORIZONTAL MOUNT, MEDIUM WATTAGE**



**POLES ARE IDENTIFIED WITH POLYGON
INDICATING CIRCUIT NUMBER OVER POLE NUMBER**

MODEL: \\MODEL\MAME
 FILE: \\MAILS_P\public\paw_bentley.com\PIV\DOT\Documents\DOT_offices\Dir\dir: S:\Project\0570771\CADD\data\CAD\sheet\0570771_Light_Lighting_Details.dgn

USER NAME = plersonbr	DESIGNED -	REVISED -
	DRAWN -	REVISED -
PLOT SCALE = 40,0000 * / in.	CHECKED -	REVISED -
PLOT DATE = 1/18/2022	DATE -	REVISED -

**STATE OF ILLINOIS
DEPARTMENT OF TRANSPORTATION**

I-74 & NEIL ST CONTROLLER 52			
SCALE:	SHEET 1	OF 3 SHEETS	STA. TO STA.

F.A.I. RTE.	SECTION	COUNTY	TOTAL SHEETS	SHEET NO.
74	HMLT2022-1	CHAMPAIGN	12	9
			CONTRACT NO. 70F71	
		ILLINOIS	FED. AID PROJECT	

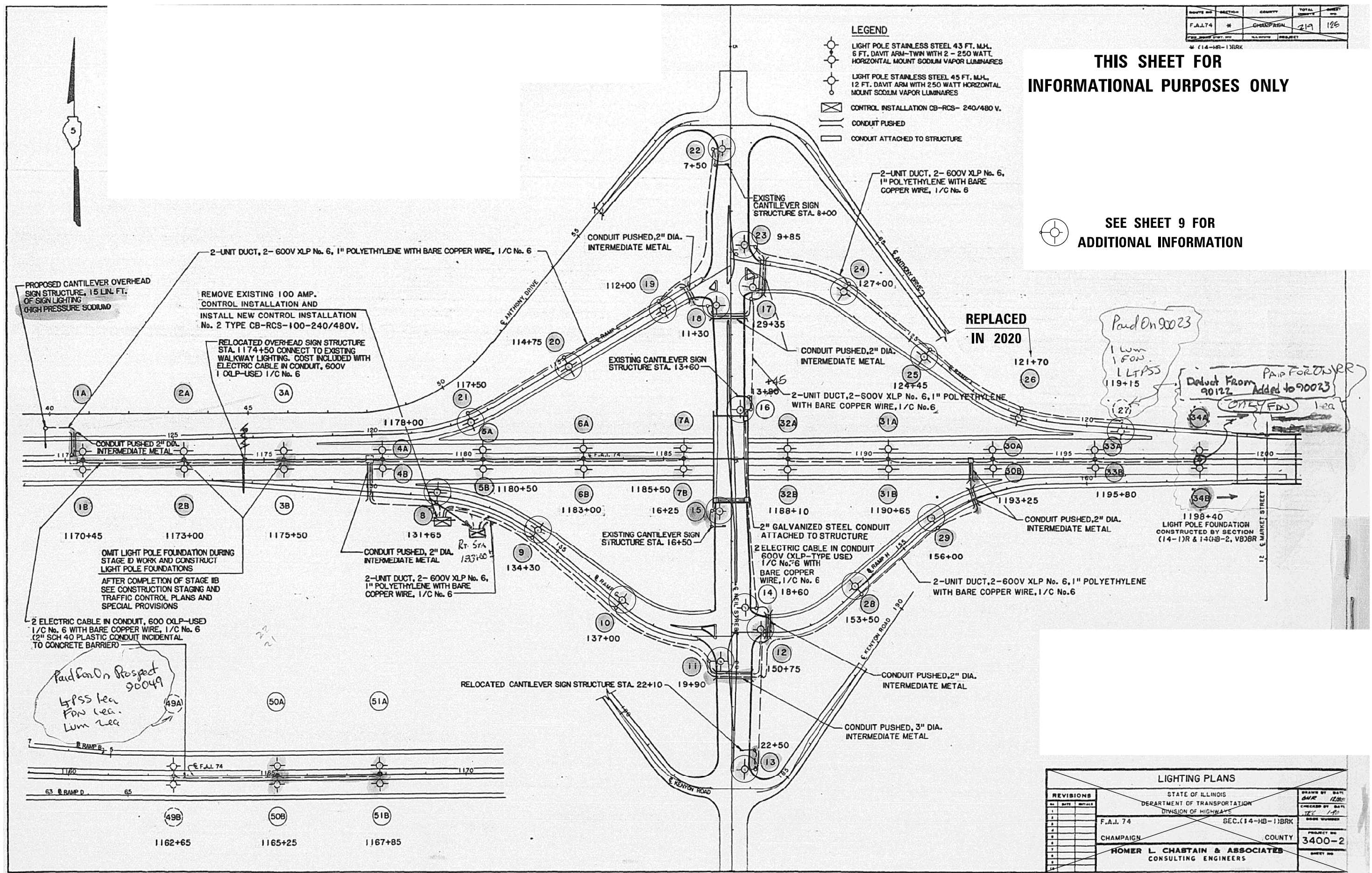
ROUTE NO.	SECTION	COUNTY	TOTAL SHEETS	SHEET NO.
F.A.I. 74	74	CHAMPAIGN	219	126
PROJECT: SEC. 14-HB-1 BRK				

THIS SHEET FOR INFORMATIONAL PURPOSES ONLY

SEE SHEET 9 FOR ADDITIONAL INFORMATION

LEGEND

- LIGHT POLE STAINLESS STEEL 43 FT. M.H., 6 FT. DAVIT ARM-TWIN WITH 2 - 250 WATT HORIZONTAL MOUNT SODIUM VAPOR LUMINAIRES
- LIGHT POLE STAINLESS STEEL 45 FT. M.H., 12 FT. DAVIT ARM WITH 250 WATT HORIZONTAL MOUNT SODIUM VAPOR LUMINAIRES
- CONTROL INSTALLATION CB-RCS- 240/480 V.
- CONDUIT PUSHED
- CONDUIT ATTACHED TO STRUCTURE



REVISIONS		LIGHTING PLANS	
NO.	DATE	STATE OF ILLINOIS	DRAWN BY DATE
1		DEPARTMENT OF TRANSPORTATION	CHAB
2		DIVISION OF HIGHWAYS	12/20
3		F.A.I. 74	CHECKED BY DATE
4		CHAMPAIGN	JTC 1/10
5		SEC. 14-HB-1 BRK	DATE NUMBER
6		COUNTY	PROJECT NO.
7		HOMER L. CHABSTAIN & ASSOCIATES	3400-2
8		CONSULTING ENGINEERS	SHEET NO.

USER NAME = plersonbr	DESIGNED -	REVISED -
PLOT SCALE = 40,0000' / in.	DRAWN -	REVISED -
PLOT DATE = 1/18/2022	CHECKED -	REVISED -
	DATE -	REVISED -

**STATE OF ILLINOIS
DEPARTMENT OF TRANSPORTATION**

**F-74 & NEIL ST
CONTROLLER 52**

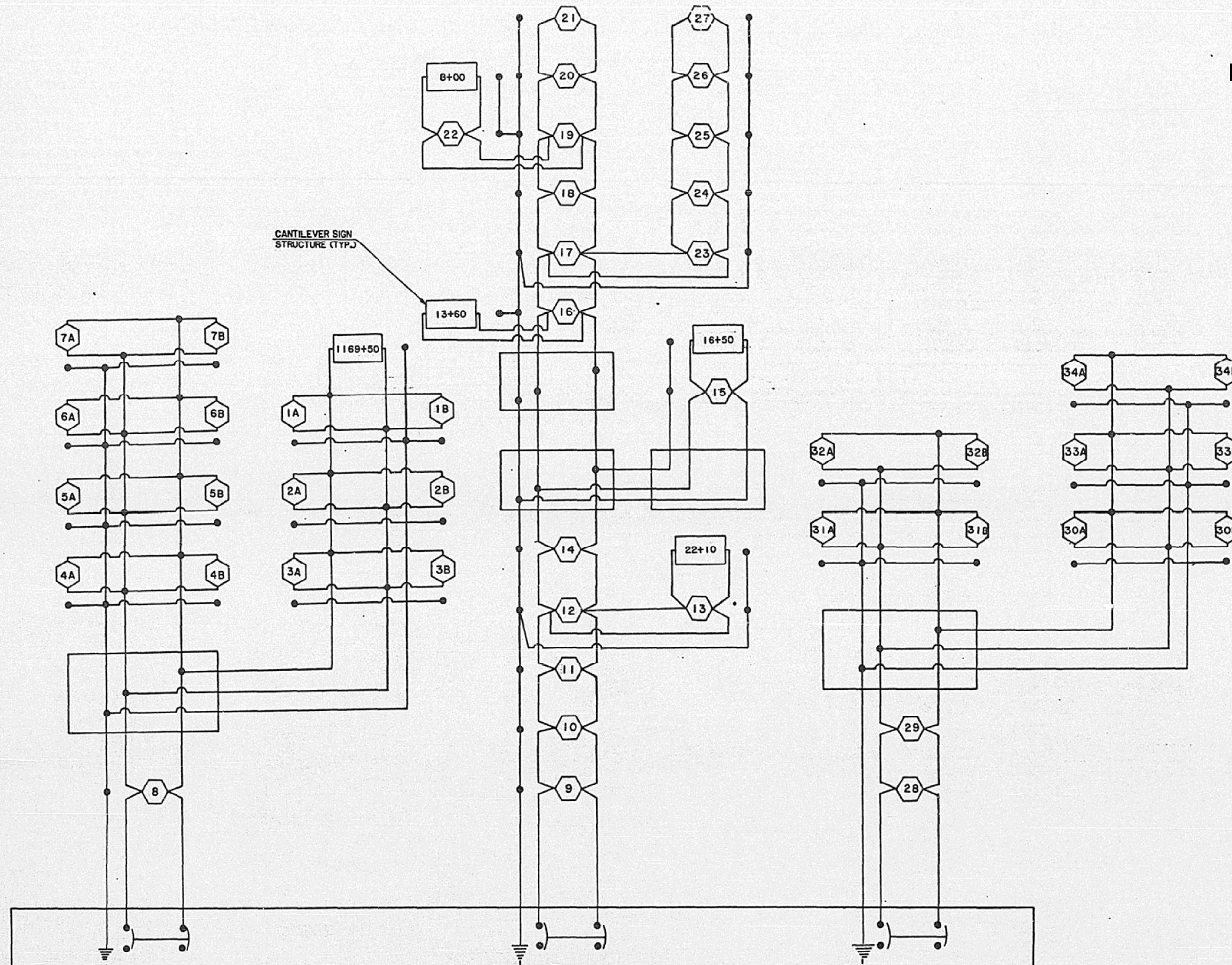
SCALE: SHEET 2 OF 3 SHEETS STA. TO STA.

F.A.I. RTE.	SECTION	COUNTY	TOTAL SHEETS	SHEET NO.
74	HMLT2022-1	CHAMPAIGN	12	10
CONTRACT NO. 70F71				
ILLINOIS FED. AID PROJECT				

MODEL: 44001E1.MXD
 FILE: 44001E1.dwg
 PROJECT: 10570771\CD\Drawings\Lighting\Detail.dwg
 PROJECT: 10570771\CD\Drawings\Lighting\Detail.dwg

ROUTE NO.	SECTION	COUNTY	TOTAL SHEETS	SHEET NO.
F.A.I. 74	(14HB) BRK	CHAMPAIGN	219	126
FED. AID PROJ. NO.	ILLINOIS PROJECT			

THIS SHEET FOR
INFORMATIONAL PURPOSES ONLY



CONTROL INSTALLATION No. 2
TYPE CB-RCS-100-240/480V

REVISIONS		LIGHTING PLANS	
NO.	DATE	BY	DATE
1		ONE	12/18
2		JTC	1/18
STATE OF ILLINOIS DEPARTMENT OF TRANSPORTATION DIVISION OF HIGHWAYS		PROJECT NO. 3400-2 SHEET NO.	
F.A.I. 74 CHAMPAIGN COUNTY		SEC. (14-HB-1) BRK	
HOMER L. CHASTAIN & ASSOCIATES CONSULTING ENGINEERS DECATUR, ILLINOIS			

MODEL: 44001.MXMF5
 FILE: 44001.MXMF5
 PROJECT: 3400-2
 SHEET: 126 OF 219
 DATE: 1/18/2022

USER NAME = plersonbr	DESIGNED -	REVISED -
	DRAWN -	REVISED -
PLOT SCALE = 40,0000 * / in.	CHECKED -	REVISED -
PLOT DATE = 1/18/2022	DATE -	REVISED -

STATE OF ILLINOIS
DEPARTMENT OF TRANSPORTATION

I-74 & NEIL ST
CONTROLLER 52

SCALE: SHEET 3 OF 3 SHEETS STA. TO STA.

F.A.I. RTE.	SECTION	COUNTY	TOTAL SHEETS	SHEET NO.
74	HMLT2022-1	CHAMPAIGN	12	11
CONTRACT NO. 70F71				
ILLINOIS FED. AID PROJECT				

