

STATE OF ILLINOIS
DEPARTMENT OF TRANSPORTATION

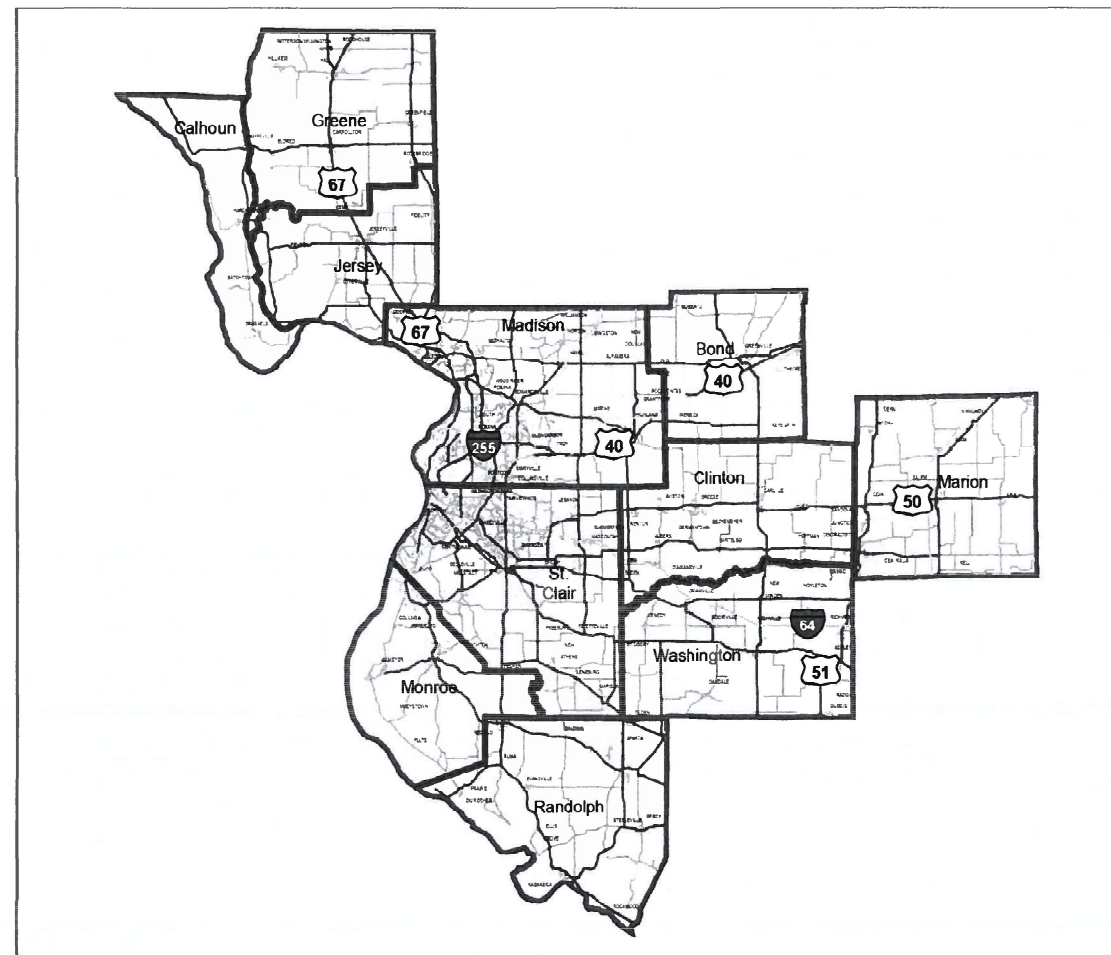
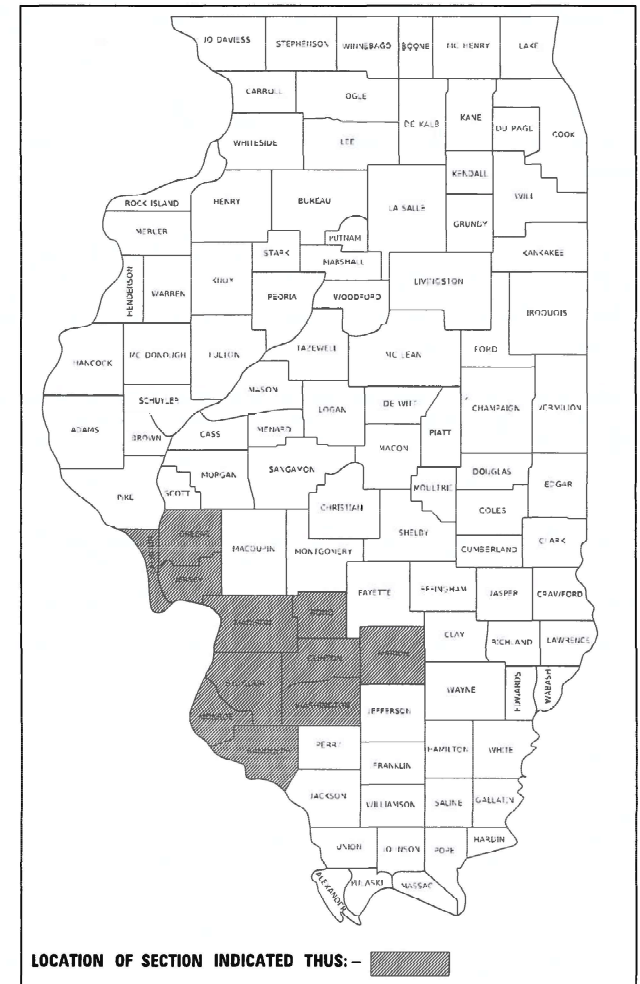
PROPOSED
HIGHWAY PLANS

VARIOUS ROUTE
SECTION DIST 8 PATCHING 2022-1
PATCHING VARIOUS LOCATION DISTRICT 8
VARIOUS COUNTY

C-98-048-22

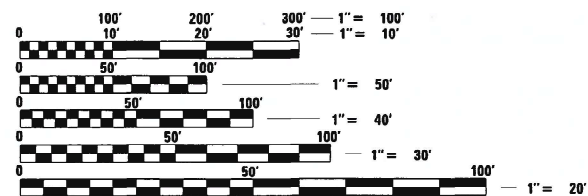
F.A. RTE.	SECTION	COUNTY	TOTAL SHEETS	SHEET NO.
*	DIST 8 PATCHING 2022-1	VARIOUS	5	1
*	VARIOUS	ILLINOIS	CONTRACT NO. 76P61	

D-98-019-22



INDEX OF SHEETS

1. COVER SHEET
2. HIGHWAY STANDARDS, GENERAL NOTES AND COMMITMENTS
- 3-4. SUMMARY OF QUANTITIES
5. DETAILS



FULL SIZE PLANS HAVE BEEN PREPARED USING STANDARD ENGINEERING SCALES. REDUCED SIZED PLANS WILL NOT CONFORM TO STANDARD SCALES. IN MAKING MEASUREMENTS ON REDUCED PLANS, THE ABOVE SCALES MAY BE USED.

J.U.L.I.E.
JOINT UTILITY LOCATION INFORMATION FOR EXCAVATORS
1-800-892-0123
OR 811

PROJECT ENGINEER - CHERYL KEPLAR
PROJECT MANAGER - TONI MANN

CONTRACT NO. 76P61

STATE OF ILLINOIS
DEPARTMENT OF TRANSPORTATION

SUBMITTED March 10, 2022
Stephen Trainor
REGIONAL ENGINEER

May 13, 2022 [Signature]
ENGINEER OF DESIGN AND ENVIRONMENT

May 13, 2022 [Signature]
DIRECTOR OF HIGHWAYS PROJECT IMPLEMENTATION

PRINTED BY THE AUTHORITY
OF THE STATE OF ILLINOIS

HIGHWAY STANDARDS

000001-08 STANDARD SYMBOLS ABBREVIATIONS & PATTERNS-001
 001001-02 AREAS OF REINFORCEMENT BARS
 001006 DECIMAL OF INCH & FOOT
 420001-10 PAVEMENT JOINTS
 420101-07 24FT JOINTED PCC PAVEMENT
 420106-07 36FT JOINTED PCC PAVEMENT
 420701-03 PAVEMENT WELDED WIRE REINFORCEMENT
 421001-03 BAR REINFORCEMENT FOR CRC PAVEMENT
 421101-10 24FT CRC PAVEMENT (WITH WIDE FLANGE BEAM TERMINAL JOINT)
 442001-04 CLASS A PATCHES
 442101-09 CLASS B PATCHES
 442201-03 CLASS C & D PATCHES
 601001-05 PIPE UNDERDRIANS
 701201-05 LANE CLOSURE 2 LANE 2 WAY - DAY ONLY
 701206-05 LANE CLOSURE 2 LANE 2 WAY - NIGHT ONLY 45MPH OR MORE
 701336-07 LANE CLOSURE 2 LANE 2 WAY - WORK AREA IN SERIES 45MPH OR MORE
 701400-11 APPROACH TO LANE CLOSURE
 701401-13 LANE CLOSURE, FREEWAY/EXPRESSWAY
 701406-13 LANE CLOSURE, FREEWAY/EXPRESSWAY - DAY OPERATION ONLY
 701411-09 LANE CLOSURE, MULTILANE - ENTRANCE OR EXIT RAMP 45MPH OR MORE
 701421-08 LANE CLOSURE, MULTILANE - DAY OPERATIONS ONLY 45 MPH TO 55MPH
 701422-10 LANE CLOSURE, MULTILANE - 45MPH TO 55MPH
 701446-11 TWO LANE CLOSURE - FREEWAY EXPRESSWAY - 284
 701456-05 PARTIAL EXIT RAMP CLOSURE FREEWAY EXPRESSWAY
 701501-06 URBAN LANE CLOSURE 2LANE 2WAY - UNDIVIDED
 701502-09 URBAN LANE CLOSURE 2LANE 2WAY WITH BIDIRECT LEFT TURN LANE
 701601-09 URBAN LANE CLOSURE MULTILANE 1WAY OR 2WAY WITH NONTRAVERSABLE MEDIAN
 701602-10 URBAN LANE CLOSURE MULTILANE 2WAY WITH BIDIRECTIONAL LEFT TURN LANE
 701606-10 URBAN SINGLE LANE CLOSURE MULTILANE 2WAY WITH MOUNTABLE MEDIAN
 701701-10 URBAN LANE CLOSURE MULTILANE INTERSECTION
 701901-08 TRAFFIC CONTROL DEVICES
 601101-02 CONCRETE HEADWALL FOR PIPE UNDERDRAINS

I.D.O.T CONTACT PERSONS

ZONE 1 CRAIG POETTKER OFFICE PHONE (618) 346-3279
 CALHOUN, GREENE, NORTH MADISON AND JERSEY COUNTY

ZONE 2 TIM PRICE OFFICE PHONE (618) 346-3284
 MONROE AND SOUTH WESTERN ST. CLAIR COUNTY

ZONE 3A DAVID CASTENS OFFICE PHONE (618) 346-3174
 MARION, RANDOLPH AND WASHINGTON COUNTY

ZONE 3B JOSEPH MONROE PHONE (618) 346-3250
 BOND, CLINTON, NORTH EASTERN ST CLAIR AND
 SOUTH MADISON COUNTY

COMMITMENTS

NO COMMITMENTS

GENERAL NOTES

- LONGITUDINAL DIMENSIONS MAY BE ADJUSTED TO FIT FIELD CONDITIONS. THE LATERAL PLACEMENT OF THE FLAGGER MAY BE VARIED FROM THAT SHOWN.
- FORM BSPE 725 IS REQUIRED.
- NO OVERNIGHT LANE CLOSURE WILL BE ALLOWED ON TWO-LANE, TWO-WAY PAVEMENT.
- ILLINOIS STATE LAW REQUIRES A 48-HOUR NOTICE TO BE GIVEN TO UTILITIES BEFORE DIGGING. FIELD MARKING OF FACILITIES MAY BE OBTAINED BY CONTACTING J.U.L.I.E (PHONE: 1-800-892-0123) OR FOR NON-MEMBERS, THE UTILITY COMPANY DIRECTLY.
- THE FOLLOWING MIXTURE REQUIREMENTS ARE APPLICABLE FOR THIS PROJECT:
 PLAN QUANTITIES FOR HMA ITEMS ARE CALCULATED USING A UNIT WEIGHT OF 112 LB/SQYD/IN (59.8 KG/SQM/25MM THICKNESS). ANY QCP PAY ITEM THAT HAS A QUANTITY OF 1600 TONS OR LESS WILL HAVE TWO SUBLOTS EACH OF WHICH WILL BE HALF OF THE PLAN QUANTITY OR HALF OF THE ADJUSTED QUANTITY BY THE RESIDENT ENGINEER/TECHNICIAN.

MIXTURE USE	PATCHING	
	BINDER	SURFACE
AC/PG	PG 64-22	PG 64-22
RAP % (MAX)	SEE SPECIAL PROVISION	SEE SPECIAL PROVISION
DESIGN AIR VOIDS	4.0% @ Ndes=70	4.0% @ Ndes=70
MIX COMPOSITION (GRADATION)	IL 19.0	IL 9.5
FRICTION AGG	MIXTURE "B"	MIXTURE "C"
QUALITY MGMT PROGRAM	QC/QA	QC/QA
MatTranDev Required?	NO	NO

- THE DEPARTMENT STRONGLY ENCOURAGES THE PRIME CONTRACTOR AND THEIR APPROVED SUB-CONTRACTORS TO HIRE MINORITY, WOMEN AND DISADVANTAGED INDIVIDUALS FROM ITS FEDERALLY FUNDED HIGHWAY CONSTRUCTION CAREERS TRAINING PROGRAM (HCCTP) TO HELP MEET WORKFORCE AND TRAINEE GOALS. THIS PROGRAM IS TRAINING MINORITIES, WOMEN AND DISADVANTAGED INDIVIDUAL IN HIGHWAY CONSTRUCTION-RELATED SKILLS, E.G. MATH FOR THE TRADES, JOB READINESS, TECHNICAL SKILLS COURSEWORK (CARPENTRY, CONCRETE FLATWORK, BLUEPRINT READING, SITE PLANS, SITE WORK, TOOLS USE, ETC.) AND OSHA 10 HOUR CERTIFICATION, TO PREPARE THEM FOR A CAREER IN THE HIGHWAY CONSTRUCTION TRADES. GRADUATES ARE WELL-TRAINED AND READY TO BECOME PRODUCTIVE ENTRY-LEVEL CONSTRUCTION WORKERS, CONTACT THE DISTRICT 8 EEO OFFICE AT 618-346-3360 AND/OR THE HCCTP COORDINATOR AT 618-874-6528 TO LEARN MORE ABOUT THE PROGRAM AND FOR ASSISTANCE IN MEETING WORKFORCE AND TRAINEE GOALS.
- THE RESIDENT ENGINEER SHALL VERIFY THE EXISTENCE OF HIGHWAY LIGHTING AND/OR I.T.S UTILITIES WITHIN THE PROJECT LIMITS. IF HIGHWAY LIGHTING AND/OR I.T.S EXISTS WITHIN THE PROJECT LIMITS, AND IF THESE ITEMS REQUIRE LOCATING, THE CONTRACTOR SHALL BE DIRECTED TO DO SO ACCORDING TO SECTION 803 OF THE STANDARD SPECIFICATION. THIS WORK SHALL BE PAID FOR ACCORDING TO ARTICLE 109.04 OF THE STANDARD SPECIFICATIONS.
- ALL TURF AREAS DISTURBED BY THE CONTRACTOR SHALL BE SEEDED WITH THE APPROPRIATE EROSION CONTROL AS DIRECTED BY THE ENGINEER AT THE CONTRACTOR'S EXPENSE.

REV. - MS

MODEL: \\MODELNAME\$
 FILE: \\M:\p1110302\paw_bentley.com\p1110302\Documents\DOT Office\Dir\c. @Project\0767661\CADD\Drawn\CD\Sheet\0767661-1-sh-egenote.dgn

NO COMMITMENTS	USER NAME = agboolato	DESIGNED -	REVISED -	STATE OF ILLINOIS DEPARTMENT OF TRANSPORTATION	HIGHWAY STANDARDS, GENERAL NOTES AND COMMITMENTS				F.A. RTE.	SECTION	COUNTY	TOTAL SHEETS	SHEET NO.
	PLOT SCALE = 100.0000' / in.	DRAWN -	REVISED -		* VARIOUS	VARDIST8PATCHING2022-1	VARIOUS	5	2				
	PLOT DATE = 2/1/2022	CHECKED -	REVISED -		* VARIOUS					CONTRACT NO. 76P61			
	DATE -	REVISED -		SCALE:	SHEET	OF	SHEETS	STA.	TO	STA.	ILLINOIS FED. AID PROJECT		

CODE NO.	ITEM	UNIT	TOTAL QUANTITY	CONSTR. CODE
				100% STATE
				NONE
42000060	WELDED WIRE REINFORCEMENT	SQ YD	280	280
44201294	CLASS B PATCH - EXPANSION JOINT	FOOT	40	40
44213000	PATCHING REINFORCEMENT	SQ YD	120	120
44213200	SAW CUTS	FOOT	3520	3520
44213204	TIE BARS 3/4"	EACH	144	144
60100060	CONCRETE HEADWALLS FOR PIPE DRAINS	EACH	4	4
60100070	SHOULDER REMOVAL AND REPLACEMENT	FOOT	44	44
60100080	FRENCH DRAINS	CU YD	20	20
60108100	PIPE UNDERDRAINS 4" (SPECIAL)	FOOT	32	32
60108204	PIPE UNDERDRAINS, TYPE 2, 4"	FOOT	60	60
70100205	TRAFFIC CONTROL AND PROTECTION, STANDARD 701401	EACH	7	7
70100315	TRAFFIC CONTROL AND PROTECTION, STANDARD 701422	EACH	4	4
70100420	TRAFFIC CONTROL AND PROTECTION, STANDARD 701411	EACH	4	4
70100430	TRAFFIC CONTROL AND PROTECTION, STANDARD 701446	EACH	2	2

CODE NO.	ITEM	UNIT	TOTAL QUANTITY	CONSTR. CODE
				100% STATE
				NONE
70103815	TRAFFIC CONTROL SURVEILLANCE	CAL DA	12	12
X0326889	PAVEMENT REPLACEMENT, HOT-MIX ASPHALT	CU YD	200	200
X6011605	PIPE DRAINS 4" (SPECIAL)	FOOT	32	32
X7010218	TRAFFIC CONTROL AND PROTECTION, (SPECIAL)	EACH	38	38
X7010410	SPEED DISPLAY TRAILER	CAL MO	3	3
Z0002700	BARRICADES	EACH	160	160
Z0008759	CALL OUT	EACH	5	5
Z0016001	DECK SLAB REPAIR (FULL DEPTH, TYPE I)	SQ YD	4	4
Z0016002	DECK SLAB REPAIR (FULL DEPTH, TYPE II)	SQ YD	4	4
Z0016200	DECK SLAB REPAIR (PARTIAL)	SQ YD	80	80
Z0017099	DOWEL BAR ASSEMBLY	EACH	6	6
Z0018900	DRILL AND GROUT DOWEL BARS	EACH	560	560
Z0021400	EXPANSION JOINT (SPECIAL)	FOOT	40	40
Z0029602	TEMPORARY SIGNING	EACH	8	8

MODEL: I:\MODELS\M116
 FILE: M116_P101116.dwg
 USER: agb001
 DATE: 12/28/2021

USER NAME = agb001	DESIGNED -	REVISED -
	DRAWN -	REVISED -
PLOT SCALE = 100,0000' / in.	CHECKED -	REVISED -
PLOT DATE = 12/28/2021	DATE -	REVISED -

**STATE OF ILLINOIS
DEPARTMENT OF TRANSPORTATION**

SUMMARY OF QUANTITY

SCALE: SHEET 1 OF 2 SHEETS STA. TO STA.

F.A. RTE.	SECTION	COUNTY	TOTAL SHEETS	SHEET NO.
*	DIST 8 PATCHING 2022-1	VARIOUS	5	3
* VARIOUS			CONTRACT NO. 76P61	
ILLINOIS		FED. AID PROJECT		

MODEL: I:\MODEL\MAME
 FILE: MAME_P:\Illinois\paw_bentley.com\P\I\DOT\Documents\DOT Office\Dir\dir_8\Project\08766\I\CAD\data\CAD\sheet\08766\1-sh-SQ.dgn

				CONSTR. CODE
				100% STATE
CODE NO.	ITEM	UNIT	TOTAL QUANTITY	NONE 0006 NONE
Z0038111	PAVEMENT REMOVAL FOR PATCHING, CASE A	CU YD	120	120
Z0038112	PAVEMENT REMOVAL FOR PATCHING, CASE B	CU YD	100	100
Z0038113	PAVEMENT REMOVAL FOR PATCHING, CASE C	CU YD	60	60
Z0062454	PAVEMENT REPLACEMENT, CONCRETE SPECIAL	CU YD	12	12
Z0062455	PAVEMENT REPLACEMENT, CONCRETE	CU YD	200	200

USER NAME = agbo@ato	DESIGNED -	REVISED -
	DRAWN -	REVISED -
PLOT SCALE = 100,0000 ' / in.	CHECKED -	REVISED -
PLOT DATE = 12/28/2021	DATE -	REVISED -

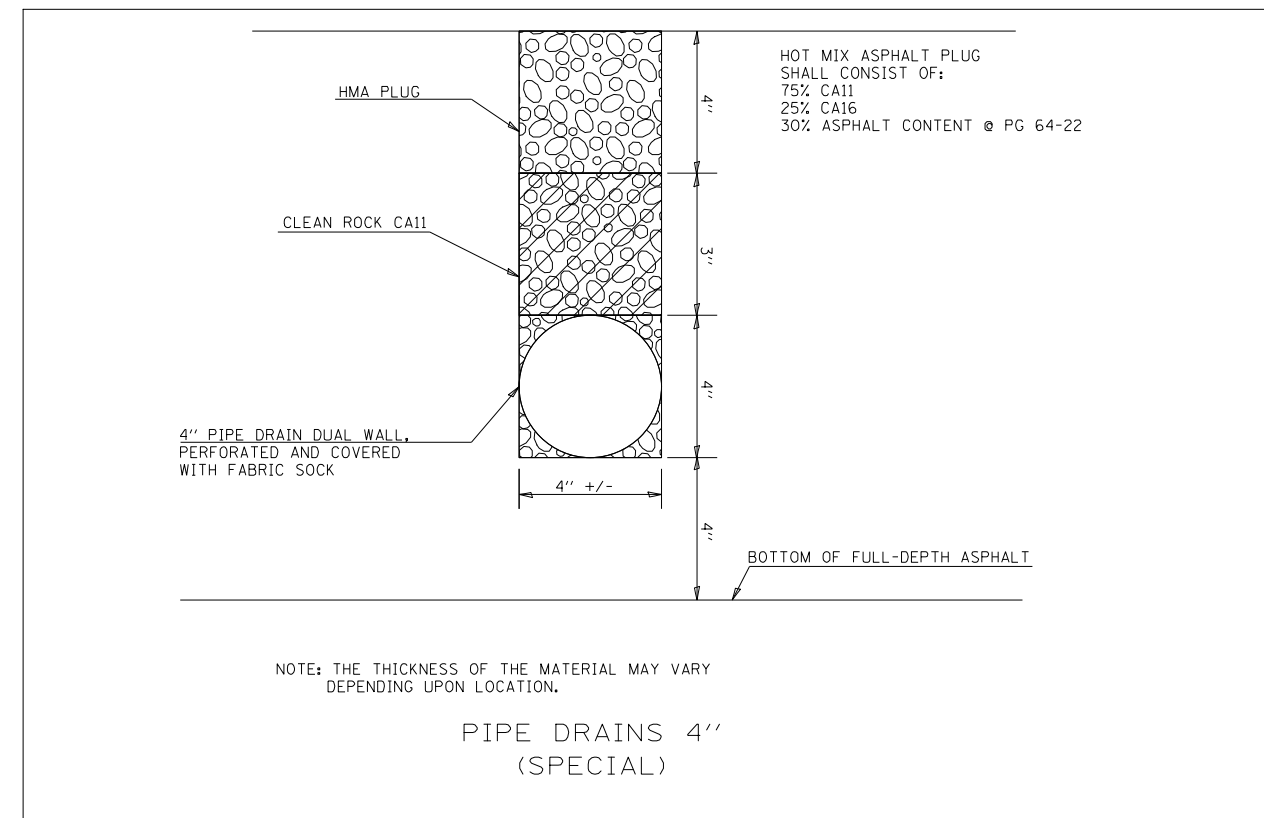
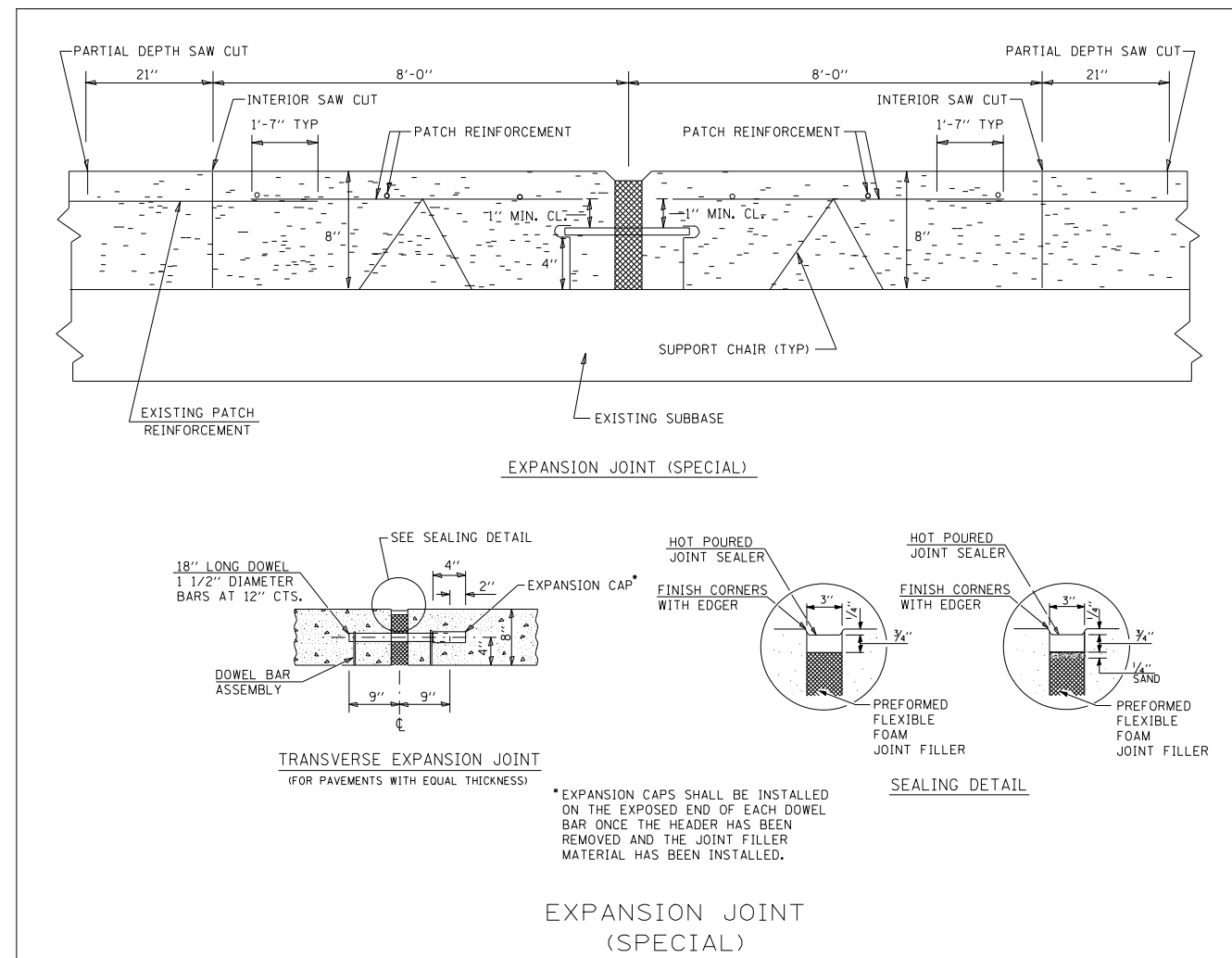
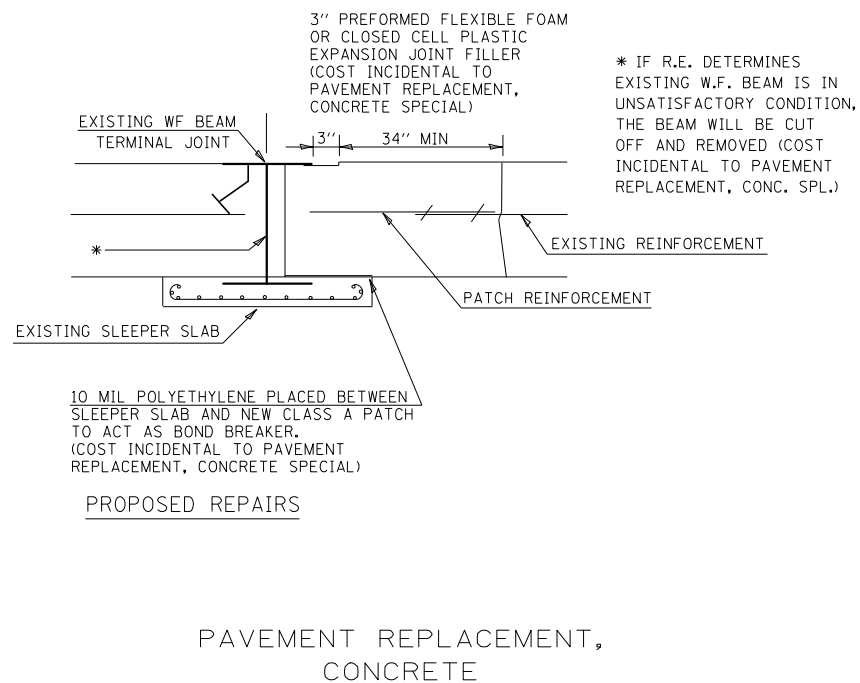
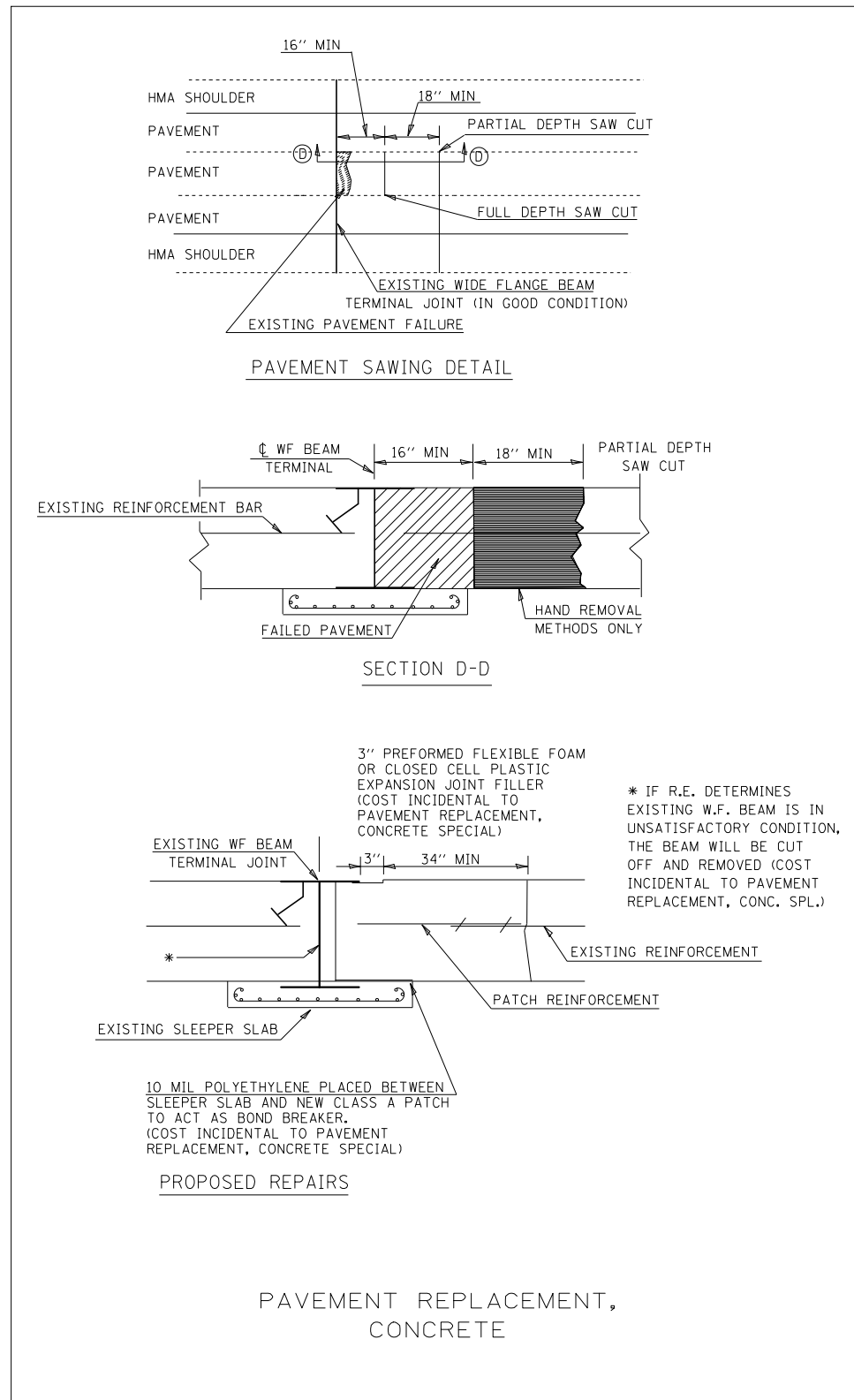
**STATE OF ILLINOIS
 DEPARTMENT OF TRANSPORTATION**

SUMMARY OF QUANTITY

SCALE: SHEET 2 OF 2 SHEETS STA. TO STA.

F.A. RTE.	SECTION	COUNTY	TOTAL SHEETS	SHEET NO.
*	DIST 8 PATCHING 2022-1	VARIOUS	5	4
* VARIOUS			CONTRACT NO. 76P61	
		ILLINOIS	FED. AID PROJECT	

MODEL: \\MODEL\NAME FILE: NAME.dwg PLOT DATE: 12/28/2021



USER NAME = agbo@ato	DESIGNED -	REVISED -
	DRAWN -	REVISED -
PLOT SCALE = 100,0000' / in.	CHECKED -	REVISED -
PLOT DATE = 12/28/2021	DATE -	REVISED -

**STATE OF ILLINOIS
DEPARTMENT OF TRANSPORTATION**

DETAILS	
SCALE:	SHEET OF SHEETS STA. TO STA.

F.A. RTE.	SECTION	COUNTY	TOTAL SHEETS	SHEET NO.
*	DIST 8 PATCHING 2022-1	VARIOUS	5	5
*VARIOUS			CONTRACT NO. 76P61	
		ILLINOIS	FED. AID PROJECT	