

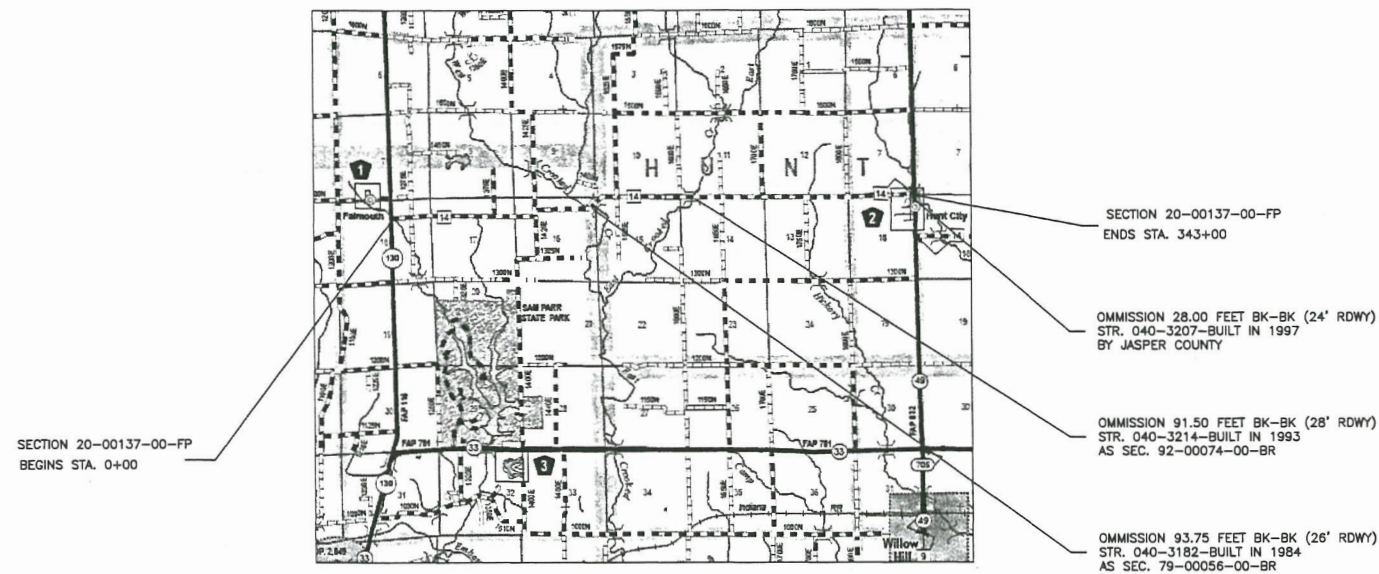
06-17-2022 LETTING ITEM 130

INDEX OF SHEETS

- 1 COVER SHEET
- 2 TYPICAL SECTIONS
- 2 SUMMARY OF QUANTITIES

STANDARDS: 701901-08
 720001-01
 720006-04
 729001-01
 BLR 22-7

STATE OF ILLINOIS
 DEPARTMENT OF TRANSPORTATION
 DIVISION OF HIGHWAYS
 PLANS FOR PROPOSED
 SURFACE TRANSPORTATION PROGRAM
 JASPER COUNTY
 SECTION 20-00137-00-FP
 CH 14
 PROJECT UCY2(818)
 JOB NO. C-97-013-22



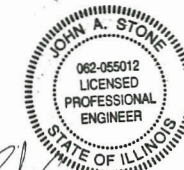
LOCATION MAP

APPROXIMATE SCALE: 1 INCH = 1 MILE
 TOTAL LENGTH = 34,300 FEET = 6.50 MILES
 OMISSIONS = 213.25 FEET = 0.04 MILES
 NET LENGTH = 34,086.75 FEET = 6.46 MILES

FUNCTIONAL CLASS - RURAL MINOR COLLECTOR

ADT = 250
 DESIGN SPEED = 40 MPH

TOLL FREE JOINT UTILITY LOCATING
 INFORMATION FOR EXCAVATORS (J.U.L.I.E.)
 TELEPHONE NO. 1-800-892-0123



John A. Stone 03/22/2022
 ILLINOIS REGISTERED PROFESSIONAL ENGINEER # 55012
 LICENSE EXPIRES NOVEMBER 30, 2023
 CONNOR & CONNOR, INC.
 PROFESSIONAL DESIGN FIRM #184-000832

ILLINOIS DEPARTMENT OF TRANSPORTATION	
APPROVED:	<i>March 24th, 2022</i> <i>[Signature]</i> JASPER COUNTY ENGINEER
PASSED:	<i>04/14/22</i> <i>[Signature]</i> DISTRICT SEVEN ENGINEER OF LOCAL ROADS & STREETS
RELEASING FOR BID BASED ON LIMITED REVIEW	<i>04/14/22</i> <i>[Signature]</i> REGION FOUR ENGINEER

Connor & Connor, Inc.
 210 East Locust Street
 P.O. Box 618
 Robinson, Illinois 62454

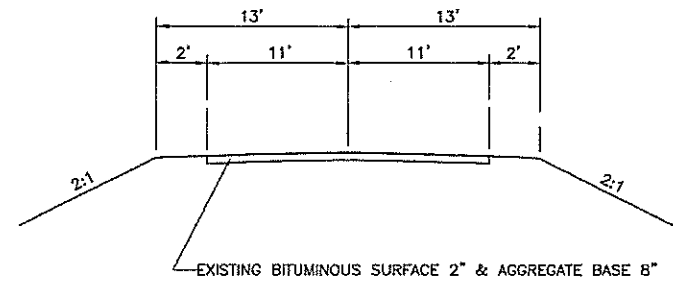


Phone: (618) 544-8623
 Fax: (618) 544-3012
 Design Firm #: 184-000832
 www.connorengineers.com

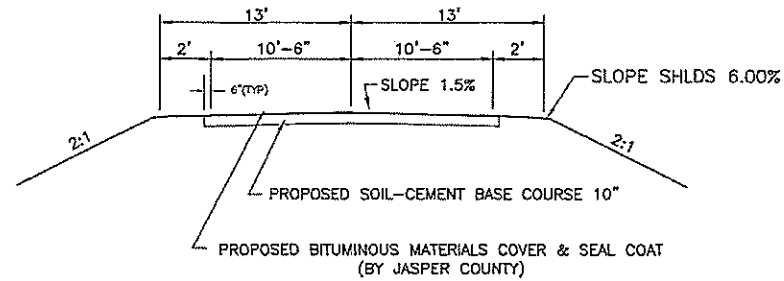
PROJECT NAME:
 JASPER COUNTY
 SEC. 20-00137-00-FP
 COUNTY HIGHWAY 14

COVER SHEET

SHEET NUMBER:
 1 OF 2
 CONTRACT NUMBER:
 95918



TYPICAL CROSS SECTION OF EXISTING ROADWAY



TYPICAL CROSS SECTION OF PROPOSED ROADWAY

PAVEMENT DESIGN DATA

2032 ADT = 275, P = 250, SU = 20, MU = 5, CLASS IV ROAD (80,000 LB. DESIGN) IBR = 3.0, SNF = 3.3
 PAVEMENT STRUCTURE MATERIALS: CEMENT STABILIZED GRANULAR MATERIAL 10" = 10 X 0.13 = 1.30

HORIZONTAL ALIGNMENT SIGNS (W1-3) WITH 15 MPH (W13-1P)

STA.	SIGN	SIGN PANEL-TYPE 1	METAL POST-TYPE A
RT. STA. 83+00	W1-3	1 @ 6.25 SQ FT = 6.25 SQ FT	1 @ 14 FOOT = 14 FOOT
RT. STA. 83+00	W13-1P	1 @ 2.25 SQ FT = 2.25 SQ FT	1 @ 14 FOOT = 14 FOOT
LT. STA. 103+00	W1-3	1 @ 6.25 SQ FT = 6.25 SQ FT	1 @ 14 FOOT = 14 FOOT
LT. STA. 103+00	W13-1P	1 @ 2.25 SQ FT = 2.25 SQ FT	1 @ 14 FOOT = 14 FOOT
		TOTAL = 17.00 SQ FT	TOTAL = 56 FOOT

SUMMARY OF QUANTITIES

CODE NO.	ITEM	UNIT	TOTAL QUANTITY
X7010216	TRAFFIC CONTROL AND PROTECTION, (SPECIAL)	L SUM	1
35200410	PROCESSING SOIL-CEMENT BASE COURSE 10"	SQ YD	83,324
35200500	CEMENT	100 WT	49,994
67100100	MOBILIZATION	L SUM	1
Δ 72000100	SIGN PANEL - TYPE 1	SQ FT	17
Δ 72900100	METAL POST - TYPE A	FOOT	56

Δ SPECIALTY ITEMS