

ROUTE NO.	SECTION	COUNTY	TOTAL SHEETS	SHEET NO.
F.A.S. 797	19-00127-00-SP	WAYNE	26	1
FED. ROAD DIST. NO.		ILLINOIS	CONTRACT NO. 95924	

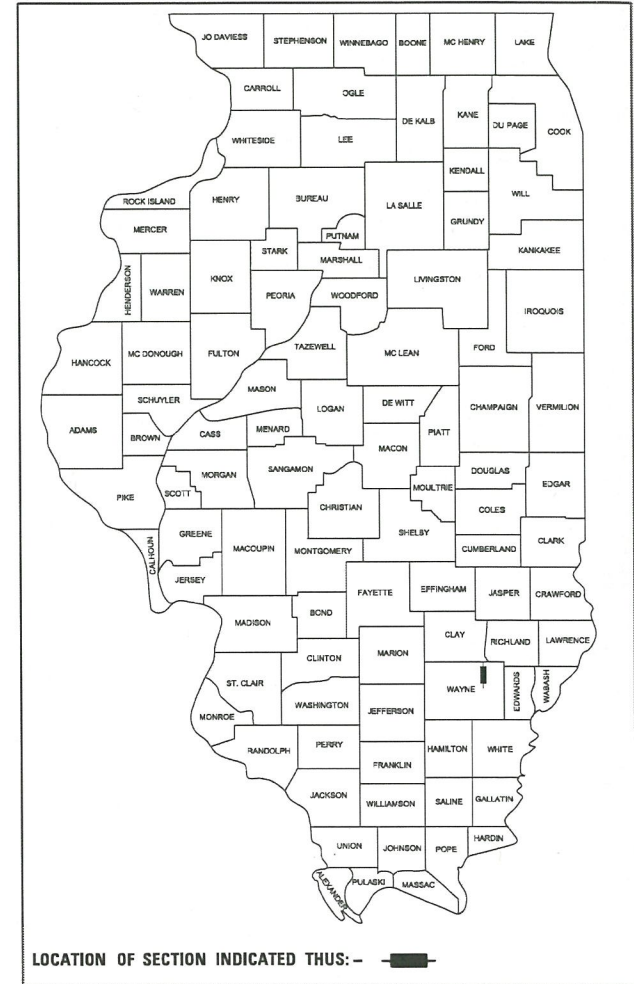
INDEX OF SHEETS 06-17-2022 LETTING ITEM 131

SHEET NO.	DESCRIPTION
1.	COVER SHEET
2.	SUMMARY OF QUANTITIES
3.	GENERAL NOTES AND HIGHWAY STANDARDS
4.	TYPICAL CROSS SECTIONS
5.	SCHEDULE OF QUANTITIES
6-7.	PLAN AND PROFILE
8.	INTERSECTION DETAILS
9-10.	SIGNAGE PLAN
11.	SIGNAL PLAN
12-26.	STATION CROSS SECTIONS

**STATE OF ILLINOIS
DEPARTMENT OF TRANSPORTATION**

**PLANS FOR PROPOSED
SURFACE TRANSPORTATION PROGRAM
HIGHWAY SAFETY IMPROVEMENT PROJECT**

**F.A. PROJECT G3MJ(899)
SECTION 19-00127-00-SP
WAYNE COUNTY
F.A.S. 797 /COUNTY HIGHWAY 1
C-97-085-22**

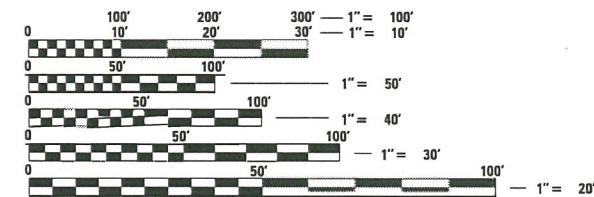


UTILITIES

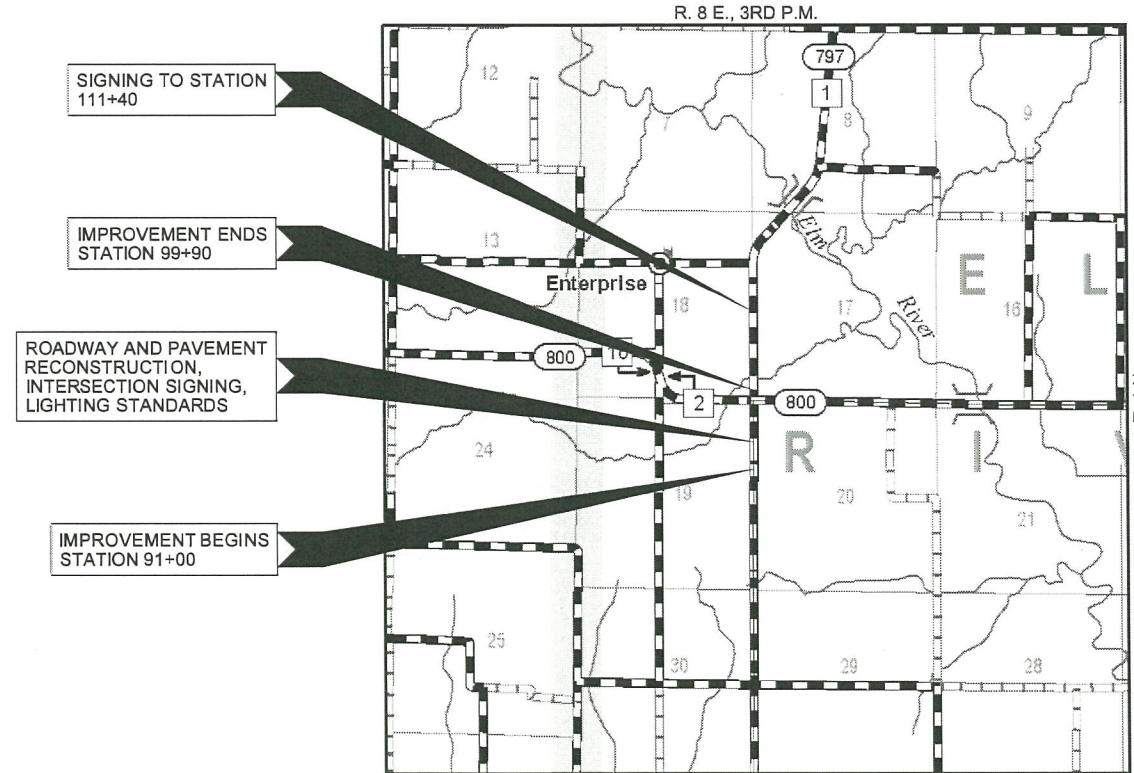
JASPER WATER WORKS CORPORATION
115 N.E. 3RD ST.
FAIRFIELD, IL 62837-2032

WABASH COMMUNICATIONS CO-OP
11415 US-50 S.
LOUISVILLE, IL 62858

WAYNE WHITE CO ELECTRIC CO-OP
1501 W. MAIN ST.
FAIRFIELD, IL 62837



FULL SIZE PLANS HAVE BEEN PREPARED USING STANDARD ENGINEERING SCALES. REDUCED SIZED PLANS WILL NOT CONFORM TO STANDARD SCALES. IN MAKING MEASUREMENTS ON REDUCED PLANS, THE ABOVE SCALES MAY BE USED.



LOCATION MAP

APPROXIMATE SCALE: 0 1/2 MILE
NET LENGTH OF SECTION = 890 FEET = 0.170 MILES



WARNING

**CALL 811
BEFORE YOU DIG**

DIG NO: A220180411

ILLINOIS DEPARTMENT OF TRANSPORTATION	
APPROVED	<i>7-08-22</i> <i>D. S. Sidel</i> COUNTY ENGINEER
PASSED	<i>01/20/22</i> <i>Butterfield</i> DISTRICT SEVEN ENGINEER OF LOCAL ROADS & STREETS
Released For Bid Based on Limited Review	<i>01/20/22</i> <i>Jeffrey Myers</i> REGION FOUR ENGINEER
STATE OF ILLINOIS DEPARTMENT OF TRANSPORTATION	

FUNCTIONAL CLASSIFICATION: MINOR COLLECTOR
DESIGN SPEED: 50 MPH
DESIGN TRAFFIC: 1350 ADT



HAMPTON, LENZINI AND RENWICK, INC.
CIVIL ENGINEERS • STRUCTURAL ENGINEERS • LAND SURVEYORS
3085 STEVENSON DRIVE, SUITE 201
SPRINGFIELD, ILLINOIS 62703
217.546.3400 www.hirengineering.com
184.000959
ILLINOIS PROFESSIONAL DESIGN FIRM LS / PE / SE CORPORATION

SUMMARY OF QUANTITIES			
CODE NO.	ITEM	CONSTRUCTION TYPE CODE 0021	
		UNIT	TOTAL
20200100	EARTH EXCAVATION	CU YD	3,635
28000305	TEMPORARY DITCH CHECKS	FOOT	112
35100100	AGGREGATE BASE COURSE, TYPE A	TON	1,915
40600275	BITUMINOUS MATERIALS (PRIME COAT)	POUND	5,705
40600290	BITUMINOUS MATERIALS (TACK COAT)	POUND	565
40600370	LONGITUDINAL JOINT SEALANT	FOOT	890
40602965	HOT-MIX ASPHALT BINDER COURSE, IL-9.5FG, N50	TON	350
40604000	HOT-MIX ASPHALT SURFACE COURSE, IL-9.5FG, MIX "C", N50	TON	210
44000100	PAVEMENT REMOVAL	SQ YD	2,490
48101200	AGGREGATE SHOULDERS, TYPE B	TON	330
67100100	MOBILIZATION	L SUM	1
70106800	CHANGEABLE MESSAGE SIGN	CAL MO	3
* 72000100	SIGN PANEL - TYPE 1	SQ FT	20
* 72000200	SIGN PANEL - TYPE 2	SQ FT	384
72400200	REMOVE SIGN PANEL ASSEMBLY - TYPE B	EACH	11
72400500	RELOCATE SIGN PANEL ASSEMBLY - TYPE A	EACH	1
* 73000100	WOOD SIGN SUPPORT	FOOT	376
* 78001110	PAINT PAVEMENT MARKING - LINE 4"	FOOT	2,930
* 78001180	PAINT PAVEMENT MARKING - LINE 24"	FOOT	48
* 78100100	RAISED REFLECTIVE PAVEMENT MARKER	EACH	8
* ^ 81028340	UNDERGROUND CONDUIT, PVC, 1 1/2" DIA.	FOOT	5,753
* ^ 81028360	UNDERGROUND CONDUIT, PVC, 2 1/2" DIA.	FOOT	10
* 81100500	CONDUIT ATTACHED TO STRUCTURE, 1 1/2" DIA., GALVANIZED STEEL	FOOT	212
* 81400730	HANDHOLE, COMPOSITE CONCRETE	EACH	1
* 81500100	GULFBOX JUNCTION	EACH	12
* ^ 85820200	FLASHER CONTROLLER, SPECIAL	EACH	1

^ SEE SPECIAL PROVISIONS

* SPECIALTY ITEMS

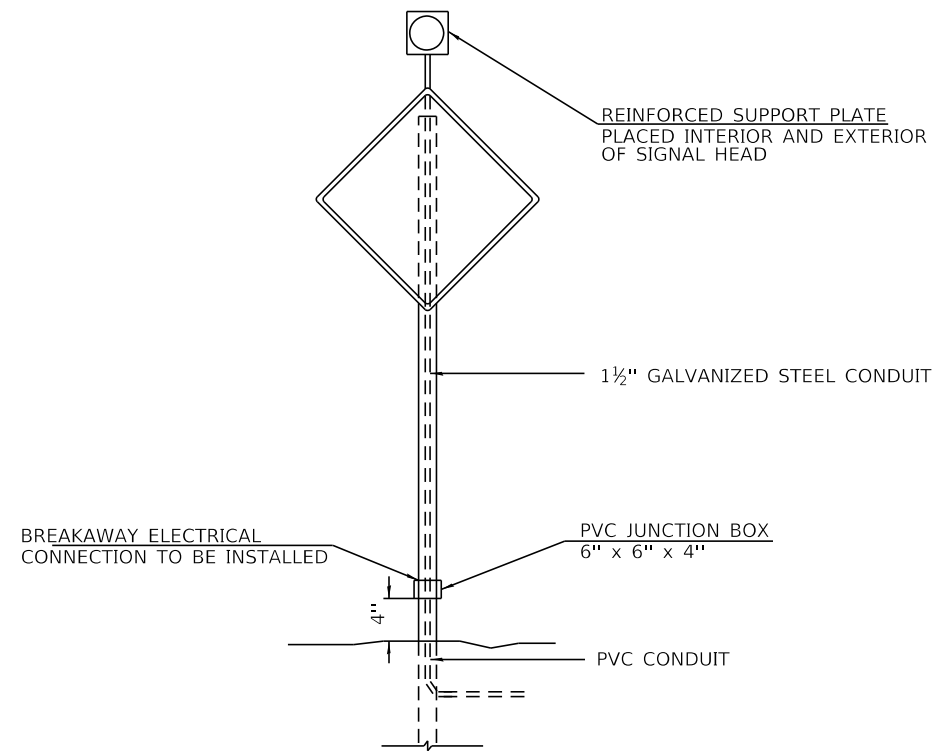
SUMMARY OF QUANTITIES (CONT.)			
CODE NO.	ITEM	CONSTRUCTION 0021	
		UNIT	TOTAL
* 87200400	SPAN WIRE	FOOT	160
* 87200500	TETHER WIRE	FOOT	160
* 87301225	ELECTRIC CABLE IN CONDUIT, SIGNAL NO. 14 3C	FOOT	6,691
* 87301245	ELECTRIC CABLE IN CONDUIT, SIGNAL NO. 14 5C	FOOT	59
* 87301805	ELECTRIC CABLE IN CONDUIT, SERVICE, NO. 6 2 C	FOOT	5
* 87302245	ELECTRIC CABLE AERIAL SUSPENDED, SIGNAL, NO. 14 5C	FOOT	90
* ^ 88000105	FLASHING BEACON INSTALLATION	EACH	1
* 88040030	SIGNAL HEAD, POLYCARBONATE, LED, 1-FACE, 1-SECTION, POST MOUNTED	EACH	24
* ^ 89502400	REMOVE EXISTING FLASHING BEACON INSTALLATION COMPLETE	EACH	1
* ^ X0327643	TRAFFIC SIGNAL WOOD POLE, 40 FT, CLASS 5	EACH	2
^ X2501000	SEEDING, CLASS 2 (SPECIAL)	ACRE	1.65
^ X7010216	TRAFFIC CONTROL AND PROTECTION, (SPECIAL)	L SUM	1
* ^ X8050095	SERVICE INSTALLATION (SPECIAL)	EACH	1
* ^ X8800081	SIGNAL HEAD, LED, 4-FACE, 1-SECTION, SPAN WIRE MOUNTED	EACH	1
^ Z0013798	CONSTRUCTION LAYOUT	L SUM	1
^ Z0055300	RUMBLE STRIP	EACH	9

^ SEE SPECIAL PROVISIONS

* SPECIALTY ITEMS

HIGHWAY STANDARDS:

- 000001-08 STANDARD SYMBOLS, ABBREVIATIONS AND PATTERNS
- 280001-07 TEMPORARY EROSION CONTROL SYSEMS
- 701006-05 OFF-RD OPERATIONS 2L, 2W, 15' TO 24" FROM PAVEMENT EDGE
- 701301-04 LANE CLOSURE 2L, 2W, SHORT TIME OPERATIONS
- 701306-04 LANE CLOSURE 2L, 2W, SLOW MOVING OPERATIONS DAY ONLY SPEEDS = 45 MPH
- 701311-03 LANE CLOSURE 2L, 2W MOVING OPERATIONS - DAY ONLY
- 701336-07 LANE CLOSURE 2L, 2W WORK AREA IN SERIES FOR SPEEDS = 45 MPH
- 701901-08 TRAFFIC CONTROL DEVICES
- 720001-01 SOUND PANEL MOUNTING DETAILS
- 720006-04 SIGN PANEL ERECTION DETAILS
- 728001-01 TELESCOPING STEEL SIGN SUPPORT
- 781001-04 TYPICAL APPLICATIONSRAISED RELFLECTIVE PAVEMENT MAKERS
- 780001-05 TYPICAL PAVEMENT MARKINGS
- 805001-01 ELECTRICAL SERVICE INSTALLATION DETAILS
- 814001-03 HANDHOLES
- 880001-01 SPAN WIRE MOUNTED SIGNALS AND FLASHING BEACON INSTALLATION
- BLR 21-9 TYPICAL APPLICATION OF TRAFFIC CONTROL DEVICES FOR CONSTRUCTION ON RURAL LOCAL HIGHWAYS



THIS DETAIL SHALL BE USED IN CONJUNCTION WITH STANDARD 880001-01

GENERAL NOTES

- 1) ALL CONSTRUCTION SHALL BE DONE IN ACCORDANCE WITH THE STATE OF ILLINOIS "STANDARD SPECIFICATIONS FOR ROAD AND BRIDGE CONSTRUCTION, ADOPTED JANUARY 1, 2022", (HERE IN AFTER REFERRED TO AS THE STANDARD SPECIFICATIONS; THE LATEST EDITION OF THE "ILLINOIS MANUAL ON UNIFORM TRAFFIC CONTROL DEVICES FOR STREETS AND HIGHWAYS"; THE DETAILS IN THE PLANS AND THE "SPECIAL PROVISIONS" INCLUDED IN THE DOCUMENTS.
- 2) ALL CLEARING, GRUBBING, FENCE REMOVAL, AND REMOVAL OF EXISTING DRAINAGE STRUCTURES SHALL BE INCLUDED IN THE COST OF EARTH EXCAVATION. ALL AGGREGATE AND BITUMINOUS PAVEMENT SHALL BE REMOVED AND PROPERLY DISPOSED OF BY THE CONTRACTOR IN A METHOD APPROVED BY THE ENGINEER. REMOVAL AND DISPOSAL OF PAVEMENT SHALL BE INCLUDED IN THE COST OF EARTH EXCAVATION AND NO ADDITIONAL COMPENSATION WILL BE ALLOWED.
- 3) ANY REFERENCE TO STANDARDS THROUGHOUT THE PLANS OR SPECIAL PROVISIONS SHALL BE INTERPRETED TO BE THE LATEST STANDARD OF THE DEPARTMENT.
- 4) THE LOCATION ON THE PLANS OF EXISTING DRAINAGE STRUCTURES, TELEPHONE LINES, ELECTRIC LINES, WATER SERVICE LINES, GAS MAINS, AND OTHER UTILITY FACILITIES AS SHOWN ON THE PLANS ARE BASED ON FIELD INVESTIGATIONS AND THE BEST INFORMATION AVAILABLE, BUT THE LOCATIONS ARE NOT GUARANTEED. IT SHALL BE THE CONTRACTOR'S RESPONSIBILITY TO ASCERTAIN THEIR EXACT LOCATION FROM THE INDIVIDUAL UTILITY COMPANIES AND BY FIELD INSPECTION.
- 5) THE CONTRACTOR SHALL PROVIDE ACCESS TO ABUTTING PROPERTY AT ALL TIMES DURING CONSTRUCTION OF THE PROJECT.
- 6) THE FOLLOWING RATES OF APPLICATION HAVE BEEN USED IN CALCULATING PLAN QUANTITIES

AGGREGATE BASE COURSE	2.05 TON/CU YD
POROUS GRANULAR EMBANKMENT	2.0 TON/CU YD
STONE RIPRAP	1.75 TON/CU YD

BITUMINOUS MATERIALS RATES

APPLICATION SURFACE TYPE	RESIDUAL RATE
AGGREGATE BASE	0.250 LB/SQ FT
MILLED HMA OR PCC (TACK COAT)	0.050 LB/SQ FT
EXISTING PAVEMENT (TACK COAT)	0.050 LB/SQ FT
TACK COAT (BETWEEN LIFTS)	0.025 LB/SQ FT

- 7) THE FINAL SURFACE OF ALL EMBANKMENT AREAS SHALL BE SEEDED. THE TOP 4 INCHES OF THE SEEDED AREAS SHALL BE TOPSOIL SUBJECT TO THE APPROVAL OF THE ENGINEER. THE COST OF SHAPING THE SLOPES AND PROVIDING TOP SOIL WILL NOT BE PAID FOR SEPARATELY BUT SHALL BE INCLUDED IN THE COST OF EARTH EXCAVATION.
- 8) THE AREA TO BE SEEDED SHALL CONSIST OF ALL DISTURBED EARTH SURFACES WITHIN THE RIGHT OF WAY OR AS DIRECTED BY THE ENGINEER.

SEEDING, CLASS 2 (SPECIAL) = 1.65 ACRES
- 9) ALL WASTE MATERIAL FROM EXCAVATIONS SHALL BE DISPOSED OF BY THE CONTRACTOR AT A SITE DESIGNATED BY THE COUNTY ONE-HALF MILE WEST OF CH 1/CH 2. AGGREGATE AND ASPHALT PAVEMENT SHALL BE SALVAGED AND STOCKPILED PER THE DIRECTION OF THE ENGINEER. SEE SPECIAL PROVISIONS. NO ADDITIONAL COMPENSATION WILL BE ALLOWED FOR STOCKPILING.
- 10) THIS PROJECT IS LOCATED AT THE INTERSECTION OF CH-1 (CO RD 1900E) AND CH-2 (CO RD 1800N) IN WAYNE COUNTY. THE WORK INCLUDED IN THIS SECTION CONSISTS OF INSTALLING OVERHEAD FLASHING BEACONS AND ALL OTHER WORK NECESSARY TO COMPLETE THIS SECTION.
- 11) THE CONTRACTOR SHALL VERIFY THE EXACT LOCATION OF ALL UNDERGROUND UTILITIES PRIOR TO BEGINNING CONSTRUCTION CALL J.U.L.I.E. AT 1-800-892-0123.
- 12) THE COUNTY ENGINEER SHALL BE NOTIFIED AT LEAST 72 HOURS PRIOR TO TURNING ON ANY FLASHER OR CONTROLLER UNIT.
- 13) THE LOCATION OF ALL FLASHING BEACON COMPONENTS SHOWN ON THE PLANS ARE APPROXIMATE ONLY. THE FINAL LOCATION SHALL BE DETERMINED BY THE ENGINEER IN THE FIELD.
- 14) THE OVERHEAD BEACONS AND THE STOP SIGNS FACING THE SAME DIRECTION WILL FLASH SIMULTANEOUSLY RED. THE STOP AHEAD WARNING SIGNS IN THE SAME DIRECTION WILL FLASH OPPOSITE YELLOW.
- 15) THE SIZE OF THE CABLE SUPPLIED SHALL BE EQUAL TO OR GREATER THAN THE SIZE OF THE CABLE REQUIRED TO TO CARRY THE LOAD BETWEEN THE CONTROLLER AND THE SERVICE INSTALLATION.
- 16) A 2 FOOT MINIMUM, 6 FOOT DESIRABLE, HORIZONTAL CLEARANCE SHALL BE MAINTAINED FROM THE BACK OF THE CURB TO THE EDGE OF THE HANDHOLES, JUNCTION BOXES AND SIGNAL POST FOUNDATIONS.
- 17) ALL THREADS OF BOLTS USED IN ASSEMBLY OF TRAFFIC SIGNAL COMPONENTS SHALL BE COATED WITH A NON-LEAD BASED ANTI-SEIZE COMPOUND, SIMILAR TO LEAD PLATE, PRIOR TO ASSEMBLY.

HANDHOLE & GULFBOX SCHEDULE					
DESCRIPTION	ALIGNMENT	STATION	LT/RT	81500100 GULFBOX JUNCTION (EACH)	81400730 HANDHOLE, COMPOSITE CONCRETE (EACH)
HANDHOLE, COMPOSITE CONCRETE	CH1	99+38	LT		1
GULFBOX, SW CORNER	CH1	99+60	LT	1	
GULFBOX, NW CORNER	CH1	100+38	LT	1	
GULFBOX, SE CORNER	CH1	99+36	RT	1	
GULFBOX, NE CORNER	CH1	100+18	RT	1	
GULFBOX, W LEG	CH2	487+35	RT	1	
GULFBOX, W LEG	CH2	493+35	RT	1	
GULFBOX, E LEG	CH2	506+70	LT	1	
GULFBOX, E LEG	CH2	512+70	LT	1	
GULFBOX, S LEG	CH1	87+33	RT	1	
GULFBOX, S LEG	CH1	93+43	RT	1	
GULFBOX, N LEG	CH1	106+68	LT	1	
GULFBOX, N LEG	CH1	112+68	LT	1	
TOTAL				12	1

SEEDING / EROSION CONTROL TABLE		
LOCATION	SEEDING, CLASS 2 (SPECIAL)	TEMPORARY DITCH CHECKS
C.H. 1 / F.A.S. 797	ACRE	FOOT
STA. 91+00.00 TO STA. 99+90.00	1.12	
STA. 100+10.00 TO STA. 111+50.00	0.52	
STA. 91+00 LT. & RT.		28
STA. 95+50 LT. & RT.		28
STA. 97+50 LT. & RT.		28
STA. 99+30 LT. & RT.		28
TOTAL	1.65	112

PAVEMENT MARKING SCHEDULE			
LOCATION	PAINT PAVEMENT MARKING		
	LINE 4"		LINE 24"
	EDGE LINE WHITE	NO PASSING CL DOUBLE YELLOW	SINGLE STOP LINE WHITE
	78001110		78001180
CH 1 / FAS 797	FOOT	FOOT	FOOT
LT. STA. 91+00 TO LT. STA. 99+90	927		
CL. STA. 91+00 TO CL. STA. 99+90		1,063	
RT. STA. 91+00 TO RT. STA. 99+90	940		
RT. STA. 99+37			13
LT. STA. 100+40			11
RT. STA. 499+35			13
LT. STA. 500+69			11
SUBTOTAL	1867	1063	48
TOTAL		2978	

EXISTING SIGN SCHEDULE						
DESCRIPTION	ALIGNMENT	STATION	LT/RT	TO BE REMOVED (Y / N)	X0327172 RELOCATE (EACH)	72400200 REMOVE (EACH)
STOP AHEAD ASSEMBLY	CH1	84+50	LT & RT	Y		2
STOP AHEAD ASSEMBLY	CH1	93+40	LT & RT	Y		2
END CLASS II TRUCK ROUTE	CH1	98+90	RT		1	
STOP SIGN ASSEMBLY	CH1	99+40	LT & RT	Y		2
STOP SIGN ASSEMBLY	CH1	100+40	LT	Y		1
STOP AHEAD ASSEMBLY	CH1	106+40	LT & RT	Y		2
STOP AHEAD ASSEMBLY	CH1	112+40	LT & RT	Y		2
CLASS II TRUCK ROUTE	CH2	501+50	RT	N		0
TOTAL					1	11

Z0055300 RUMBLE STRIP SCHEDULE		
ALIGNMENT	STATION	QUANTITY (EACH)
CH1	85+40	1
CH1	91+40	1
CH1	94+90	1
CH2	485+38	1
CH2	491+38	1
CH2	494+88	1
CH2	505+16	1
CH2	508+66	1
CH2	514+66	1
TOTAL		9

SEE SHEET 10 FOR DETAILS

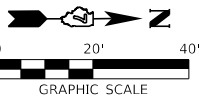
EARTHWORK SCHEDULE							
LOCATION	EARTH EXCAVATION	PAVEMENT REMOVAL *	SHRINKAGE FACTOR	PERCENT USED	EXCAVATION ADJUSTED FOR SHRINKAGE	EMBANKMENT REQUIRED	EARTHWORK BALANCE
CH 1 / FAS 797	CU.YD.	CU.YD.			CU.YD.	CU.YD.	CU.YD.
STA. 91+00.00 TO STA. 99+90.00	3634	8641	25.00%	100.00%	2726	0	2726
TOTAL	3634	8641			2726	0	2726

* FOR INFORMATION ONLY

WASTE 2725 CU YDS

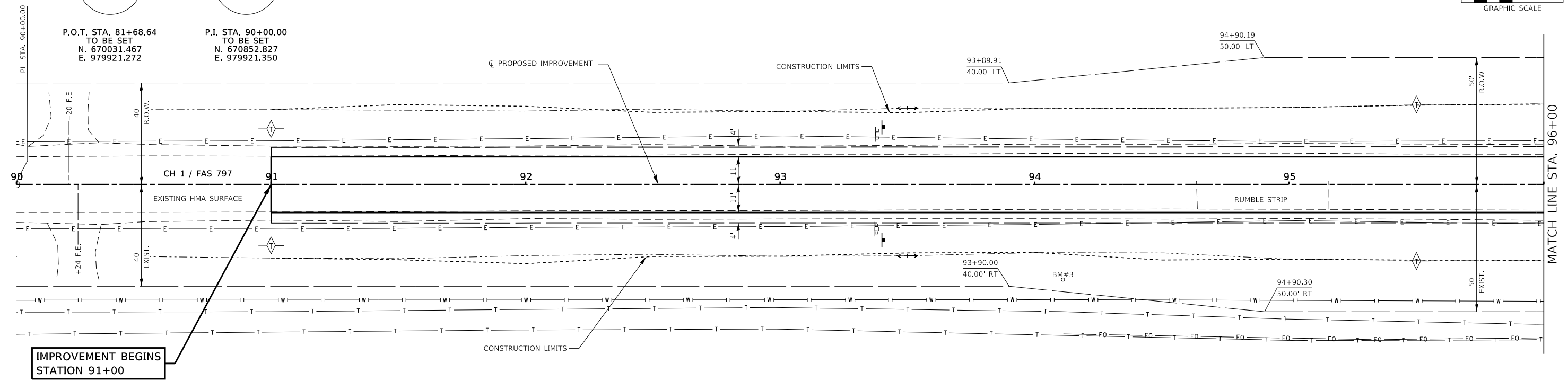
PROPOSED SIGN SCHEDULE						
DESCRIPTION	ALIGNMENT	STATION	LT/RT	72000100 SIGN PANEL - TYPE 1	72000200 SIGN PANEL - TYPE 2	73000100 WOOD SIGN SUPPORT
STOP AHEAD	CH1	87+40	LT & RT		32	30
STOP AHEAD	CH1	93+40	LT & RT		32	30
STOP & ALL WAY	CH1	99+40	LT & RT	5	32	34
STOP AHEAD	CH2	487+38	LT & RT		32	30
STOP AHEAD	CH2	493+38	LT & RT		32	30
STOP & ALL WAY	CH2	499+38	LT & RT	5	32	34
STOP AHEAD	CH1	112+40	LT & RT		32	30
STOP AHEAD	CH1	106+40	LT & RT		32	30
STOP & ALL WAY	CH1	100+40	LT & RT	5	32	34
STOP & ALL WAY	CH2	500+66	LT & RT	5	32	34
STOP AHEAD	CH2	506+66	LT & RT		32	30
STOP AHEAD	CH2	512+66	LT & RT		32	30
TOTAL				20	384	376

ROADWAY SCHEDULE								
LOCATION	AGGREGATE BASE COURSE, TYPE A	BITUMINOUS MATERIALS (PRIME COAT)	BITUMINOUS MATERIALS (TACK COAT)	HOT-MIX ASPHALT BINDER COURSE, IL- 9.5FG, N50	HOT-MIX ASPHALT SURFACE COURSE, IL- 9.5FG, MIX "C", N50	PAVEMENT REMOVAL	AGGREGATE SHOULDERS, TYPE B	LONGITUDINAL JOINT SEALANT
CH 1 / FAS 797	35100100 TON	40600275 POUND	40600290 POUND	40602965 TON	40604000 TON	44000100 SQ YD	48101200 TON	40600370 FOOT
STA. 91+00 TO STA. 99+90	1915	5705	565	350	210	2,490	330	890
TOTAL	1915	5705	565	350	210	2490	330	890



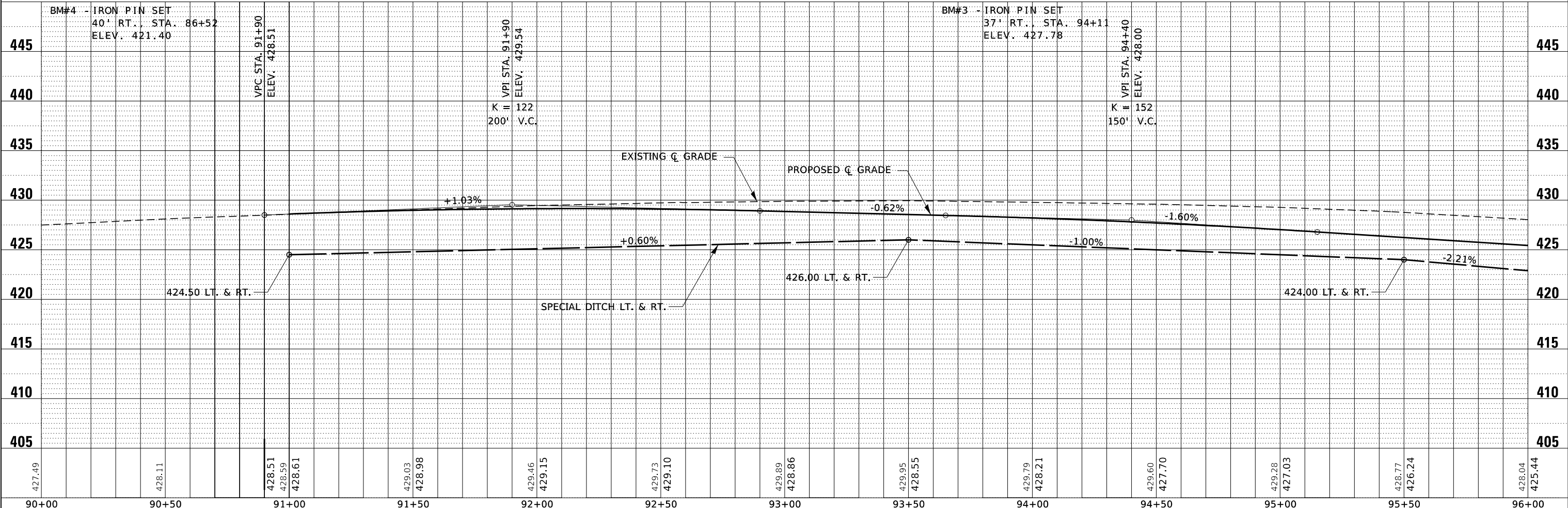
P.O.T. STA. 81+68.64
TO BE SET
N. 670031.467
E. 979921.272

P.I. STA. 90+00.00
TO BE SET
N. 670852.827
E. 979921.350



DATE	BY
DATE	BY
DATE	BY
DATE	BY

DATE	BY
DATE	BY
DATE	BY
DATE	BY



427.49	428.11	428.51 428.59 428.61	429.03 428.98	429.46 429.15	429.73 429.10	429.89 428.86	429.95 428.55	429.79 428.21	429.60 427.70	429.28 427.03	428.77 426.24	428.04 425.44
90+00	90+50	91+00	91+50	92+00	92+50	93+00	93+50	94+00	94+50	95+00	95+50	96+00

FILE NAME = 200345-eh-plnprf_CH1.dgn
 USER NAME = tsmth
 DESIGNED - J.W.F.
 DRAWN - T.W.K.
 CHECKED - S.W.M.
 DATE - 04/08/2022

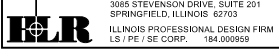
REVISIONS
 REVISED -
 REVISED -
 REVISED -
 REVISED -

STATE OF ILLINOIS
 WAYNE COUNTY HIGHWAY DEPARTMENT

PLAN AND PROFILE
 C.H. 1

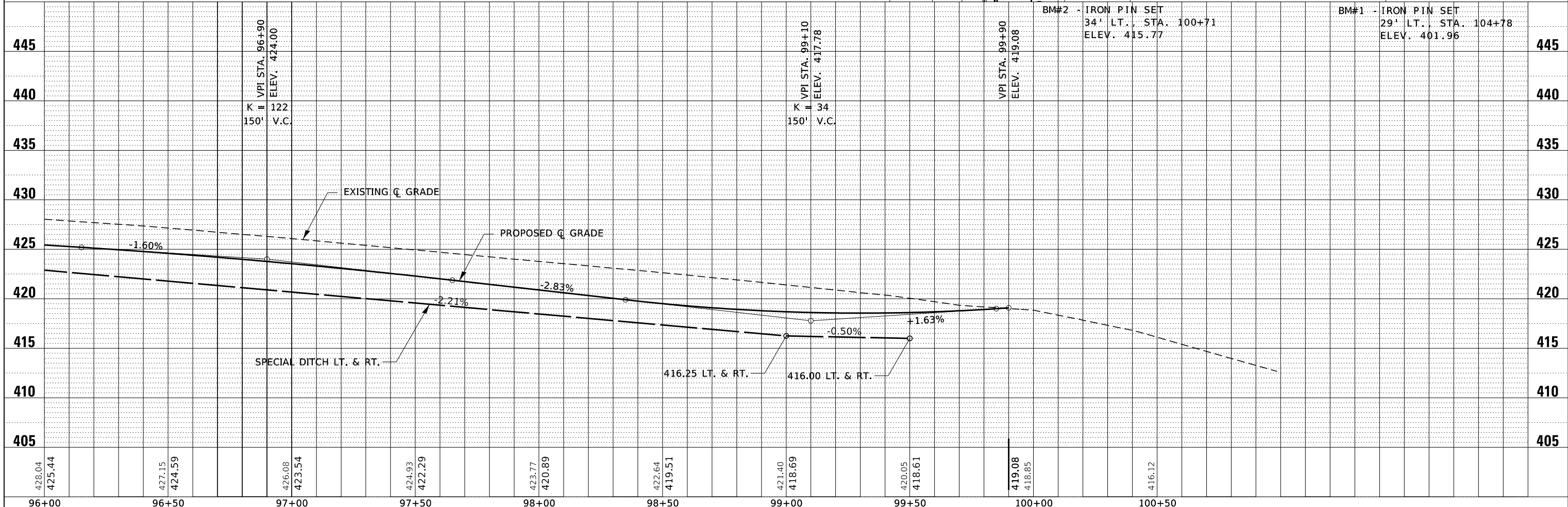
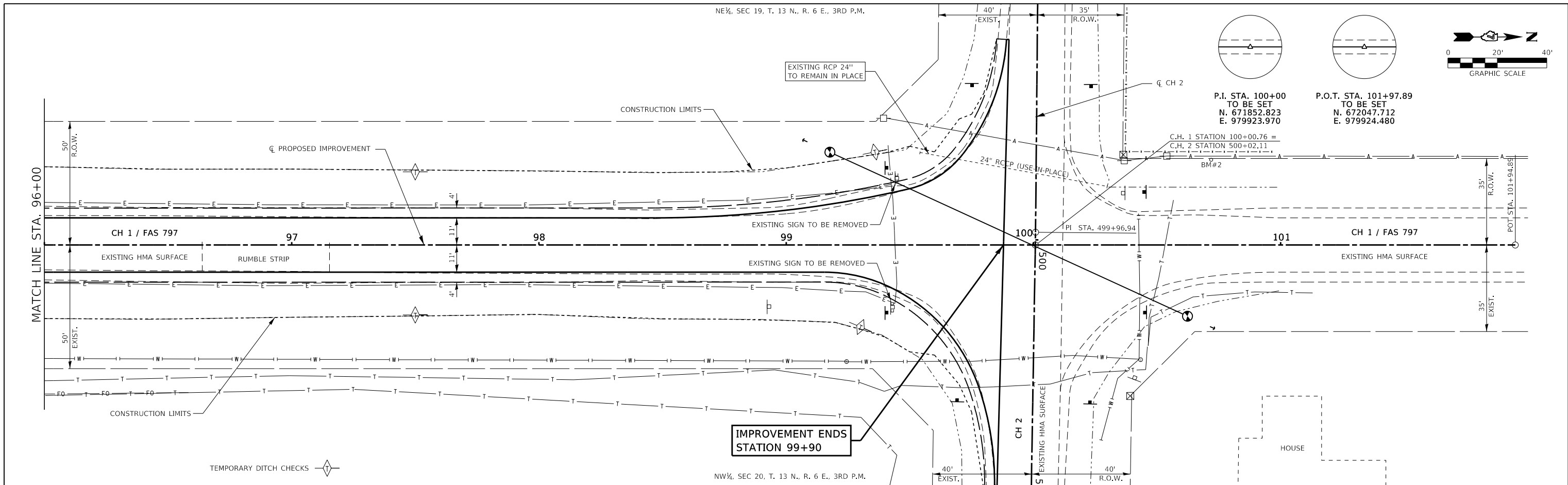
F.A.S.	SECTION	COUNTY	TOTAL SHEETS	SHEET NO.
797	19-00127-00-SP	WAYNE	26	6
CONTRACT NO. 95924				
ILLINOIS FED. AID PROJECT G3M(899)				

SCALE: 5V:20H
 SHEET NO. 1 OF 2 SHEETS
 STA. 90+00 TO STA. 96+00

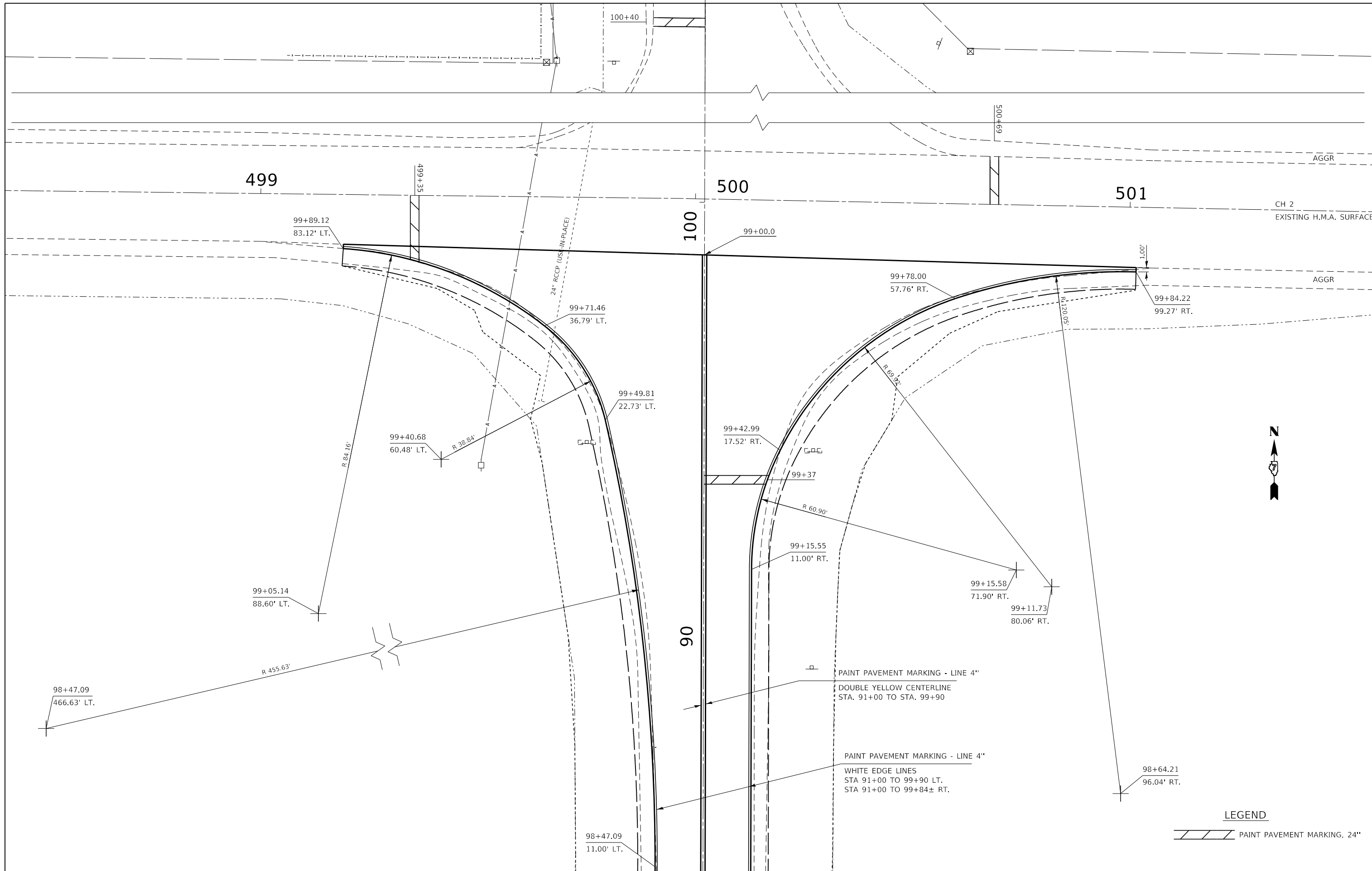


PLAN	REVIEWED	DATE
	BY	
	NOTED	
	DATE	
	BY	
	NOTED	
	DATE	
	BY	
	NOTED	
	DATE	
	BY	
	NOTED	
	DATE	

PROFILE	REVIEWED	DATE
	BY	
	NOTED	
	DATE	
	BY	
	NOTED	
	DATE	
	BY	
	NOTED	
	DATE	
	BY	
	NOTED	
	DATE	



FILE NAME = 200345-sht-planprf_CH1.dgn	USER NAME = tsmlth	DESIGNED - J.W.F.	REVISIONS -	STATE OF ILLINOIS WAYNE COUNTY HIGHWAY DEPARTMENT	PLAN AND PROFILE C.H. 1	F.A.S. 797	SECTION 19-00127-00-SP	COUNTY WAYNE	TOTAL SHEETS 26	SHEET NO. 7	
HAMPTON, LENZINI AND RENWICK, INC.	PLOT SCALE = \$SCALE\$	DRAWN - T.W.K.	REVISIONS -			CONTRACT NO. 95924					
3085 STEVENSON DRIVE, SUITE 201	DATE = 4/12/2022	CHECKED - S.W.M.	REVISIONS -			ILLINOIS FED. AID PROJECT G3M(899)					
SPRINGFIELD, ILLINOIS 62765		DATE = 04/08/2022	REVISIONS -			SCALE: 5V:20H SHEET NO. 2 OF 2 SHEETS STA. 96+00 TO STA. 101+94.89					



LEGEND

PAINT PAVEMENT MARKING, 24"

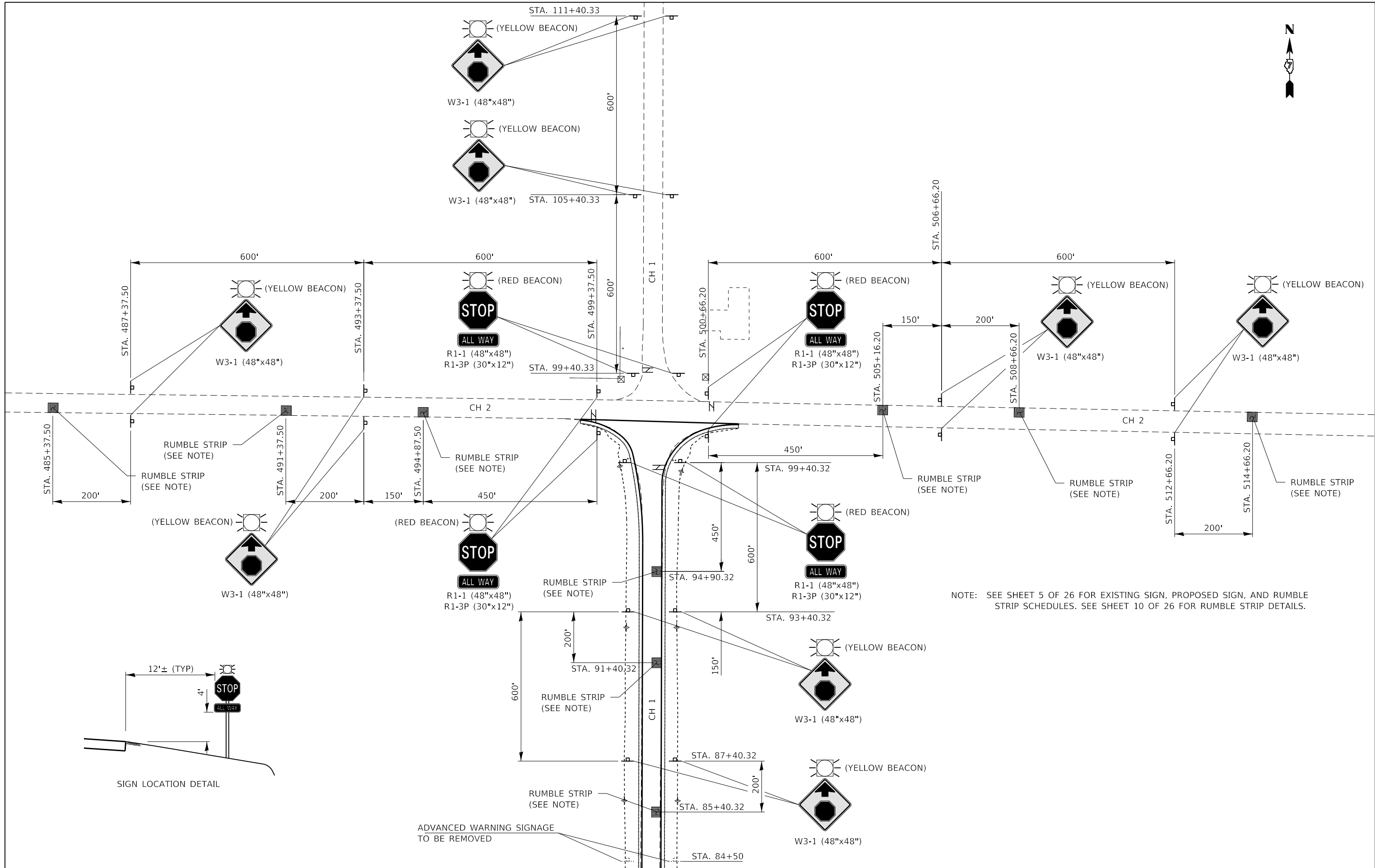
FILE NAME = 200345-sht-deta1.s.dgn	USER NAME = tsmth	DESIGNED - X.X.X.	REVISED -
HAMPTON, LENZINI AND RENWICK, INC. 3065 STEVENSON DRIVE, SUITE 201 SPRINGFIELD, ILLINOIS 62703 ILLINOIS PROFESSIONAL DESIGN FIRM LS / PE / SE CORP. 184.000959	PLOT SCALE = \$SCALE\$	DRAWN - D.M.F.	REVISED -
PLOT DATE = 4/12/2022	DATE = 04/08/2022	CHECKED - X.X.X.	REVISED -
		DATE = 04/08/2022	REVISED -

**STATE OF ILLINOIS
WAYNE COUNTY HIGHWAY DEPARTMENT**

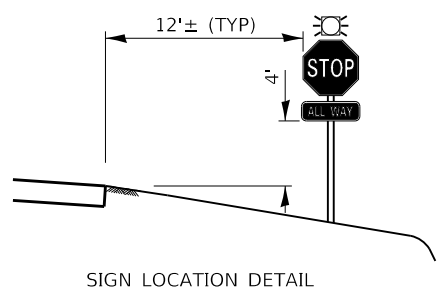
**INTERSECTION DETAILS
C.H. 1 / C.H. 2**

F.A.S.	SECTION	COUNTY	TOTAL SHEETS	SHEET NO.
797	19-00127-00-SP	WAYNE	26	8
CONTRACT NO. 95924				
		ILLINOIS	FED. AID PROJECT G3M(899)	

SCALE: 1"=10' SHEET NO. 1 OF 1 SHEETS STA. 98+45 TO STA. 100+50

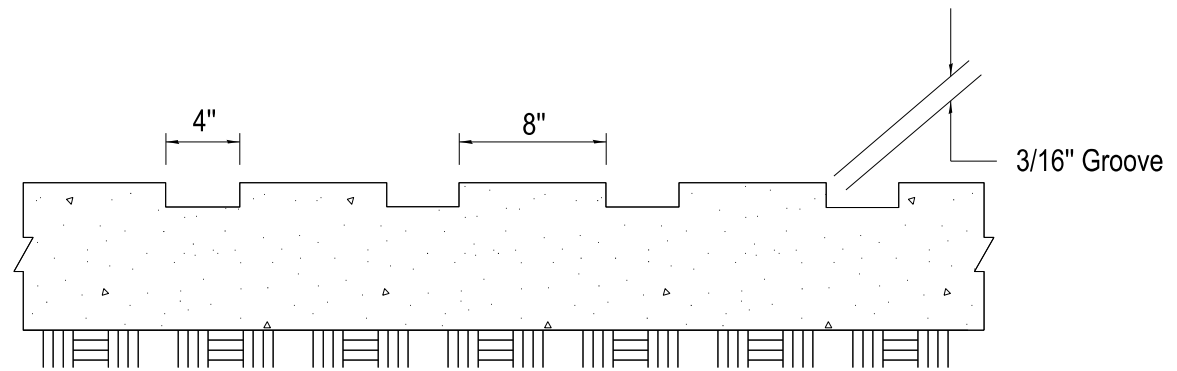
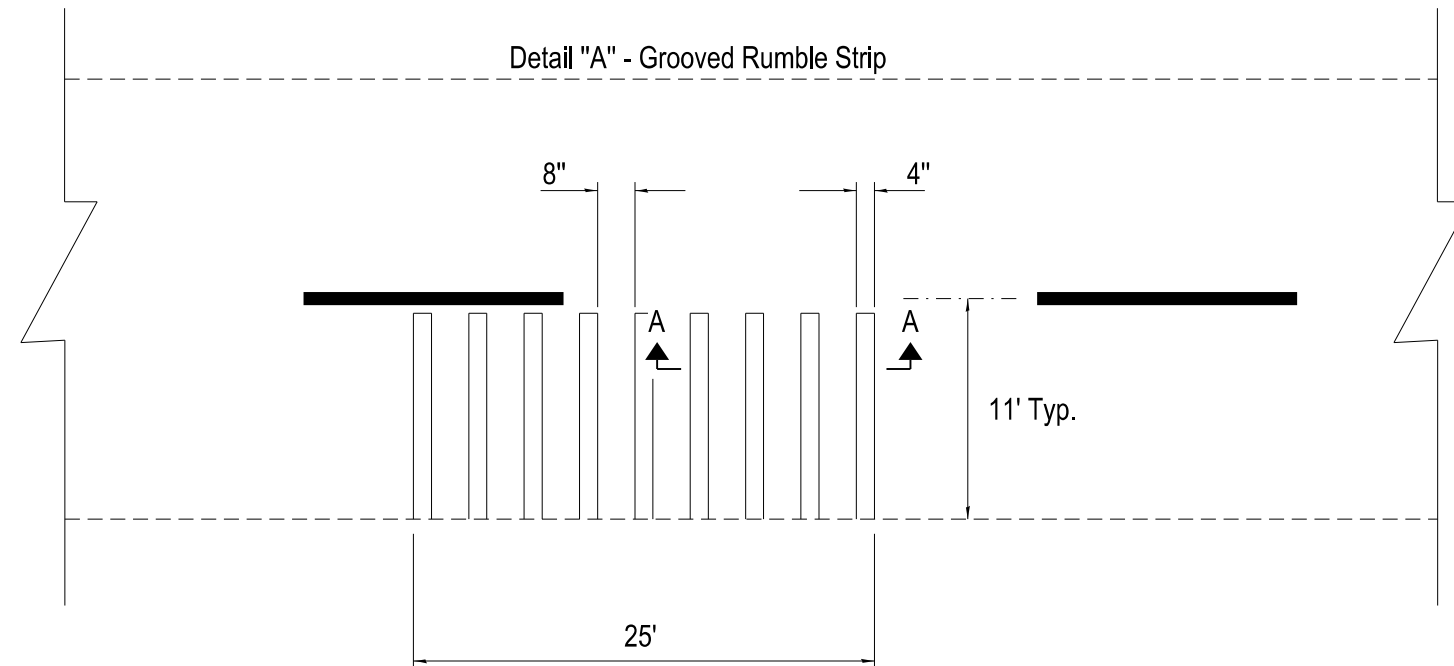


NOTE: SEE SHEET 5 OF 26 FOR EXISTING SIGN, PROPOSED SIGN, AND RUMBLE STRIP SCHEDULES. SEE SHEET 10 OF 26 FOR RUMBLE STRIP DETAILS.



ADVANCED WARNING SIGNAGE TO BE REMOVED

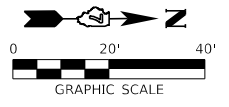
FILE NAME = 200345-ehi-traffic-control_CH1.dgn	USER NAME = tsr/eth	DESIGNED - J.W.F.	REVISED -	STATE OF ILLINOIS WAYNE COUNTY HIGHWAY DEPARTMENT	SIGNAGE PLAN			F.A.S.	SECTION	COUNTY	TOTAL SHEETS	SHEET NO.
HAMPTON, LENZINI AND RENWICK, INC. 3085 STEVENSON DRIVE, SUITE 201 SPRINGFIELD, ILLINOIS 62703	PLOT SCALE = SCALES	DRAWN - T.D.S.	REVISED -		797	19-00127-00-SP	WAYNE	26	9	CONTRACT NO. 95924		
HLR ILLINOIS PROFESSIONAL DESIGN FIRM LS / PE / SE CORP. 184.000959	PLOT DATE = 4/12/2022	CHECKED - S.W.M.	REVISED -		SCALE: NONE	SHEET NO. 1 OF 2 SHEETS	STA.	TO STA.	ILLINOIS FED. AID PROJECT G3M(J)899			
		DATE - 04/08/2022	REVISED -									



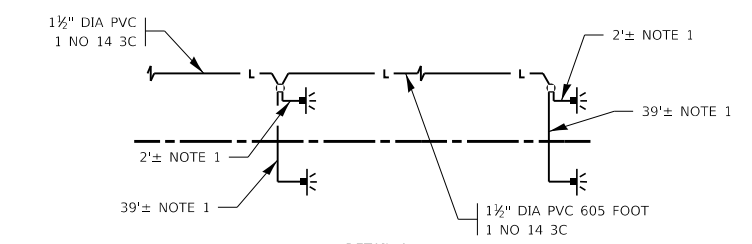
Detail "A"
 NOTE: The 25-foot rumble area has 4-inch lengths of treated surface stretched across the width of approach lane, each separated by 8 inches of existing pavement.

SECTION A-A

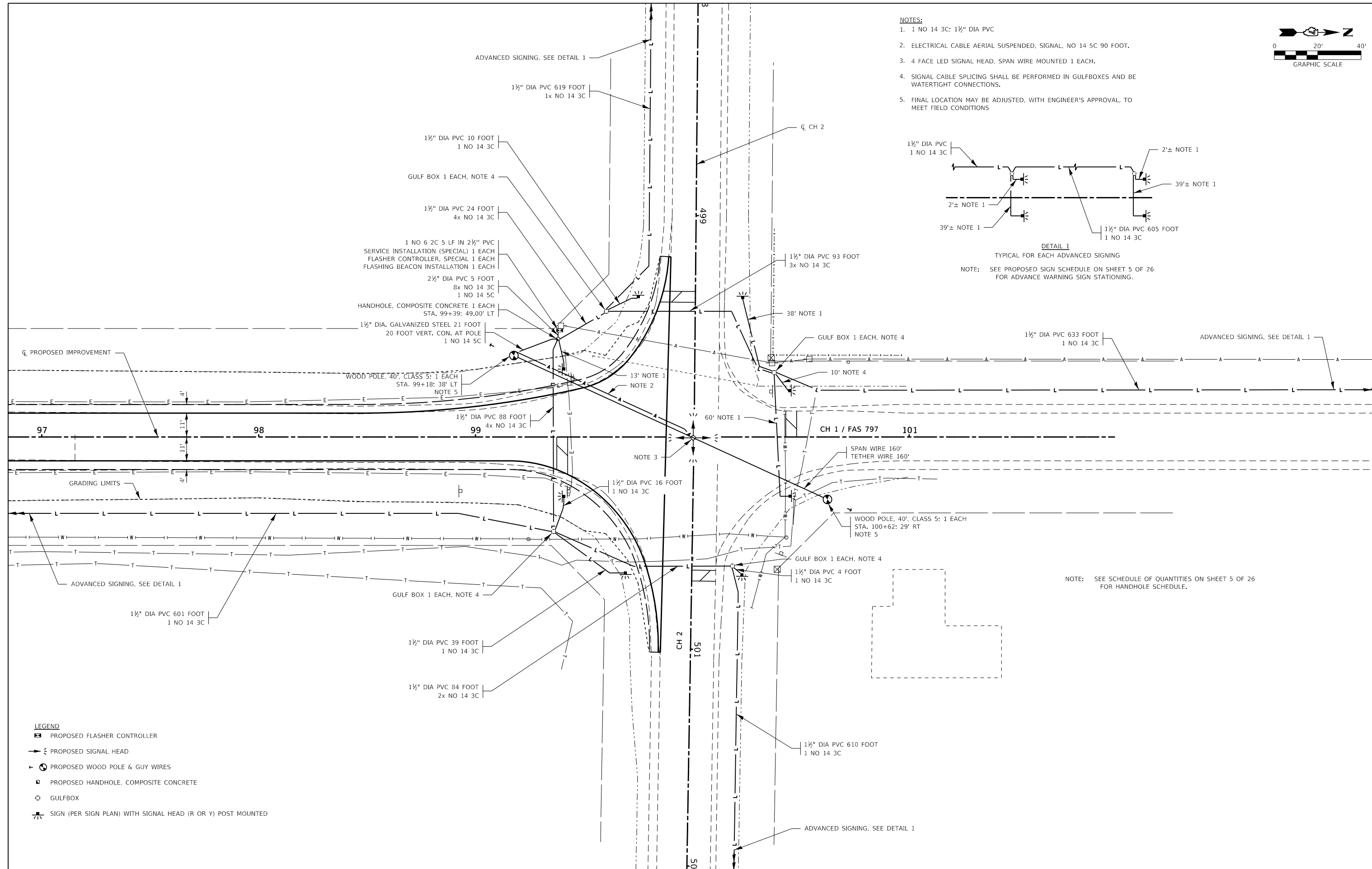
FILE NAME = 200345-shit-traffic-control_CH1.dgn	USER NAME = tsmth	DESIGNED - J.W.F.	REVISED -	STATE OF ILLINOIS WAYNE COUNTY HIGHWAY DEPARTMENT	SIGNAGE PLAN RUMBLE STRIP DETAIL			F.A.S.	SECTION	COUNTY	TOTAL SHEETS	SHEET NO.
HAMPTON, LENZINI AND RENWICK, INC. 3085 STEVENSON DRIVE, SUITE 201 SPRINGFIELD, ILLINOIS 62703 ILLINOIS PROFESSIONAL DESIGN FIRM LS / PE / SE CORP. 184.000959	PLOT SCALE = \$SCALE\$	DRAWN - T.D.S.	REVISED -		797	19-00127-00-SP	WAYNE	26	10			
PLOT DATE = 4/12/2022	DATE - 04/08/2022	CHECKED - S.W.M.	REVISED -		CONTRACT NO.							
		REVIS			SCALE: NONE	SHEET NO. 2 OF 2 SHEETS	STA.	TO STA.	ILLINOIS FED. AID PROJECT			



- NOTES:**
- 1 NO 14 3C: 1½" DIA PVC
 - ELECTRICAL CABLE AERIAL SUSPENDED, SIGNAL, NO 14 5C 90 FOOT.
 - 4 FACE LED SIGNAL HEAD, SPAN WIRE MOUNTED 1 EACH.
 - SIGNAL CABLE SPlicing SHALL BE PERFORMED IN GULFBXES AND BE WATERTIGHT CONNECTIONS.
 - FINAL LOCATION MAY BE ADJUSTED, WITH ENGINEER'S APPROVAL, TO MEET FIELD CONDITIONS



DETAIL 1
TYPICAL FOR EACH ADVANCED SIGNING
NOTE: SEE PROPOSED SIGN SCHEDULE ON SHEET 5 OF 26 FOR ADVANCE WARNING SIGN STATIONING.



- LEGEND**
- ▣ PROPOSED FLASHER CONTROLLER
 - ↗ PROPOSED SIGNAL HEAD
 - ⊕ PROPOSED WOOD POLE & GUY WIRES
 - ▣ PROPOSED HANDHOLE, COMPOSITE CONCRETE
 - GULFBX
 - ⊕ SIGN (PER SIGN PLAN) WITH SIGNAL HEAD (R OR Y) POST MOUNTED

FILE NAME = 200345-sht-SignalPlan.dgn	USER NAME = tsmth	DESIGNED - X.X.X.	REVISED -
HAMPTON, LENZINI AND RENWICK, INC. 3065 STEVENSON DRIVE, SUITE 201 SPRINGFIELD, ILLINOIS 62703 ILLINOIS PROFESSIONAL DESIGN FIRM LS / PE / SE CORP. 184.000959	PLOT SCALE = \$SCALE\$	DRAWN - X.X.X.	REVISED -
PLOT DATE = 4/12/2022	DATE = 04/08/2022	CHECKED - X.X.X.	REVISED -

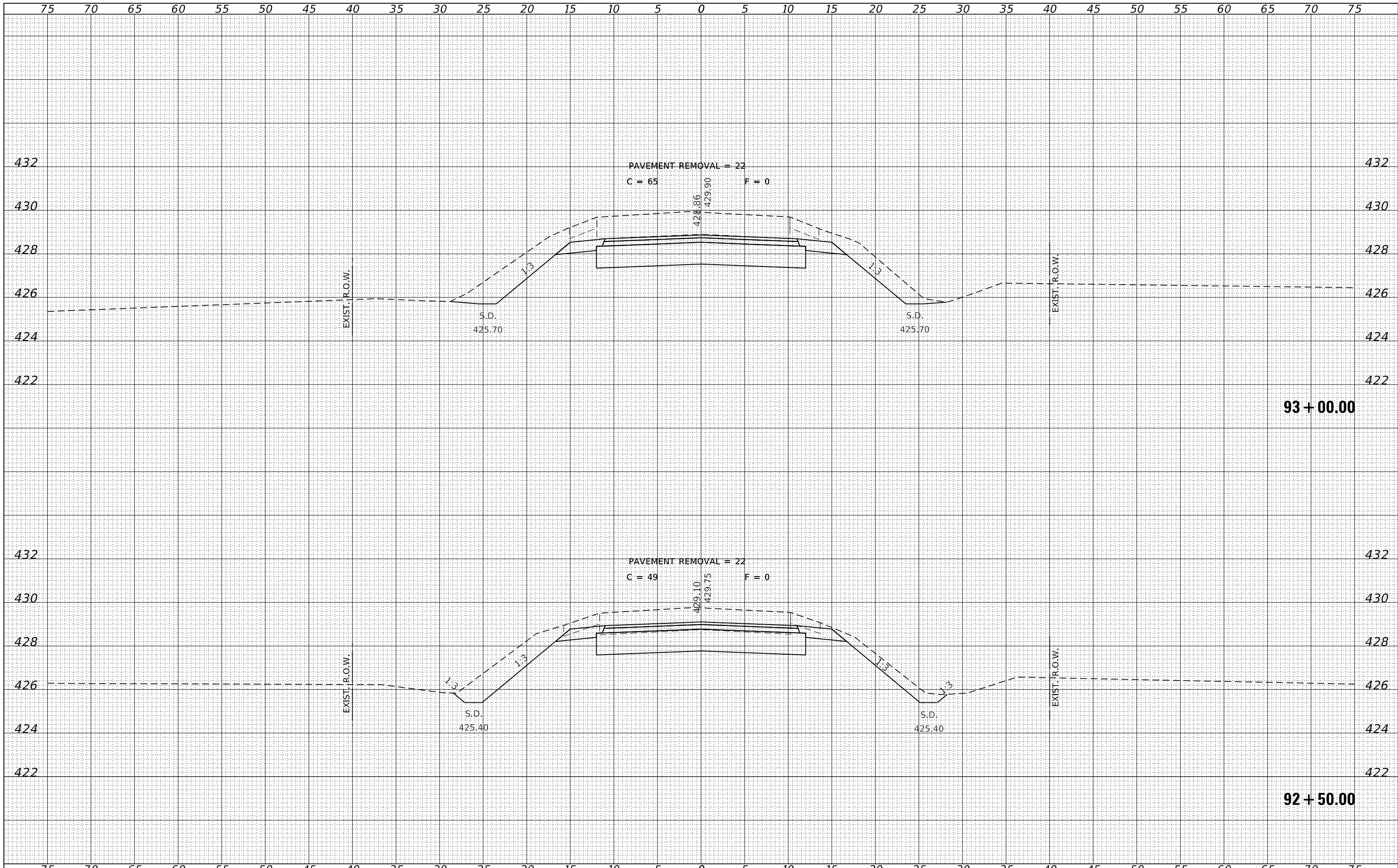
**STATE OF ILLINOIS
WAYNE COUNTY HIGHWAY DEPARTMENT**

SIGNAL PLAN	
SCALE: 5V:20H	SHEET NO. 1 OF 1 SHEETS
STA. 96+00	TO STA. 103+00

F.A.S.	SECTION	COUNTY	TOTAL SHEETS	SHEET NO.
797	19-00127-00-SP	WAYNE	26	11
CONTRACT NO. 95924				
ILLINOIS FED. AID PROJECT G3M(899)				

DATE	
BY	
FINAL SURVEY	
SURVEYED	
NOTE BOOK	
NO.	
PLOTTED	
TEMPLATE	
AREAS CHECKED	

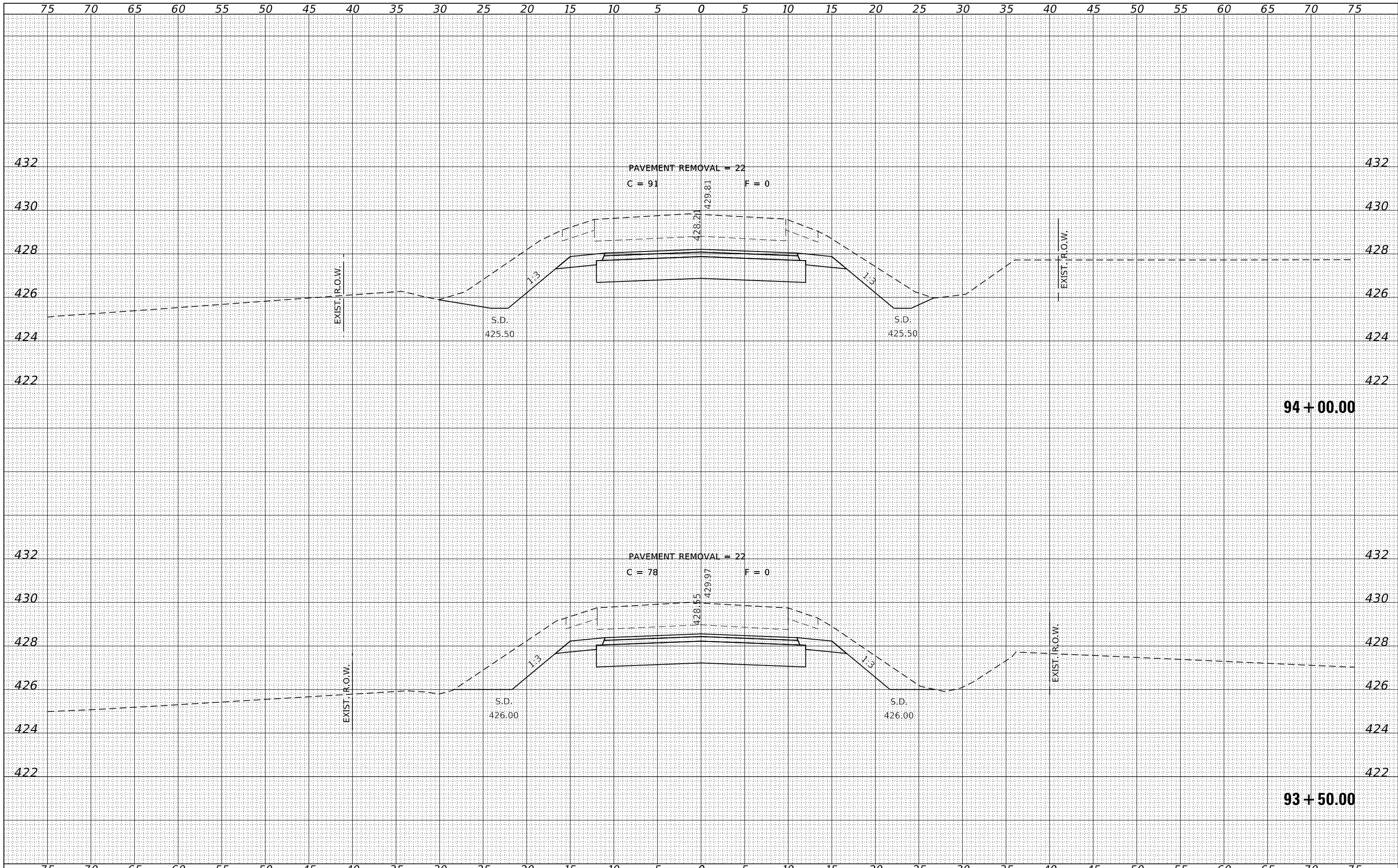
DATE	
BY	
ORIGINAL SURVEY	
SURVEYED	
NOTE BOOK	
NO.	
PLOTTED	
TEMPLATE	
AREAS CHECKED	



FILE NAME = 200345-shl-vssheets_CH1.dgn	USER NAME = tsmlth	DESIGNED - J.W.F.	REvised -	STATE OF ILLINOIS WAYNE COUNTY HIGHWAY DEPARTMENT	STATION CROSS SECTIONS C.H. 1			F.A.S.	SECTION	COUNTY	TOTAL SHEETS	SHEET NO.
HAMPTON, LENZINI AND RENWICK, INC. 3885 STEVENSON DRIVE, SUITE 201 SPRINGFIELD, ILLINOIS 62703 ILLINOIS PROFESSIONAL DESIGN FIRM L.S. / P.E. / S.E. CORP. 184.009958	PLOT SCALE = \$SCALES	DRAWN - T.W.K.	REvised -					797	19-00127-00-SP	WAYNE	26	14
PLOT DATE = 4/12/2022	DATE - 04/08/2022	CHECKED - S.W.M.	REvised -		CONTRACT NO. 95924			ILLINOIS FED. AID PROJECT G3M(899)				
		DATE - 04/08/2022	REvised -		SCALE: 5H:2V	SHEET NO. 3 OF 15 SHEETS	STA. 92+50.00 TO STA. 93+00.00					

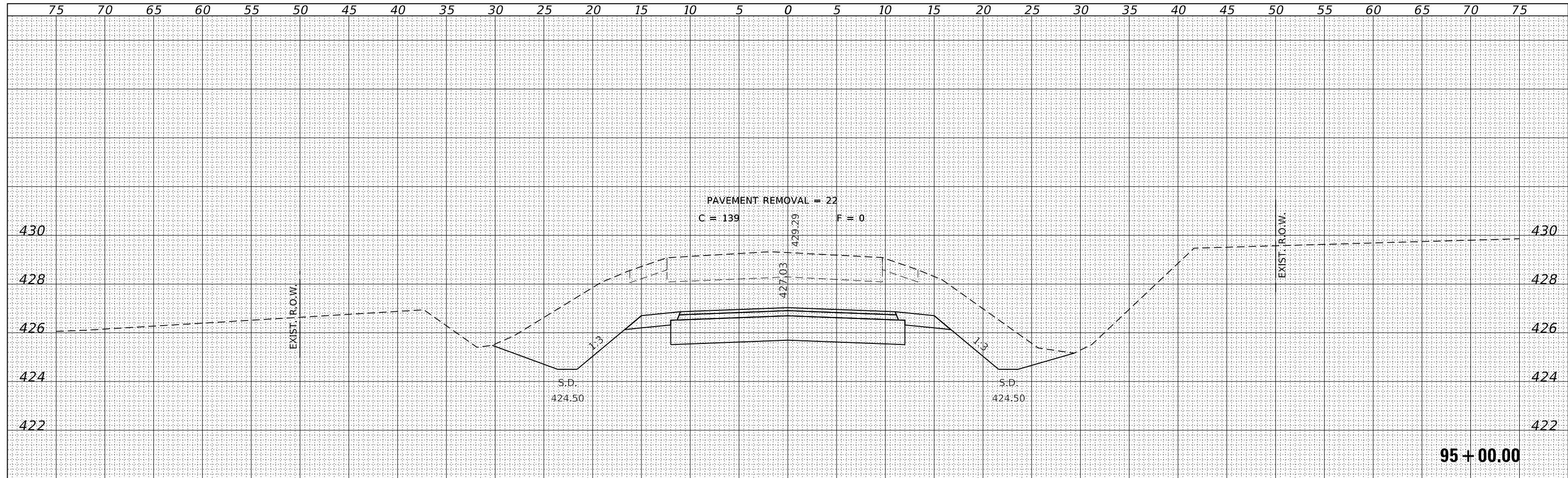
DATE	
BY	
FINAL SURVEY	SURVEYED
NOTE BOOK	PLOTTED
NO.	TEMPLATE
	AREAS CHECKED
	AREAS CHECKED

DATE	
BY	
ORIGINAL SURVEY	SURVEYED
NOTE BOOK	PLOTTED
NO.	TEMPLATE
	AREAS CHECKED
	AREAS CHECKED

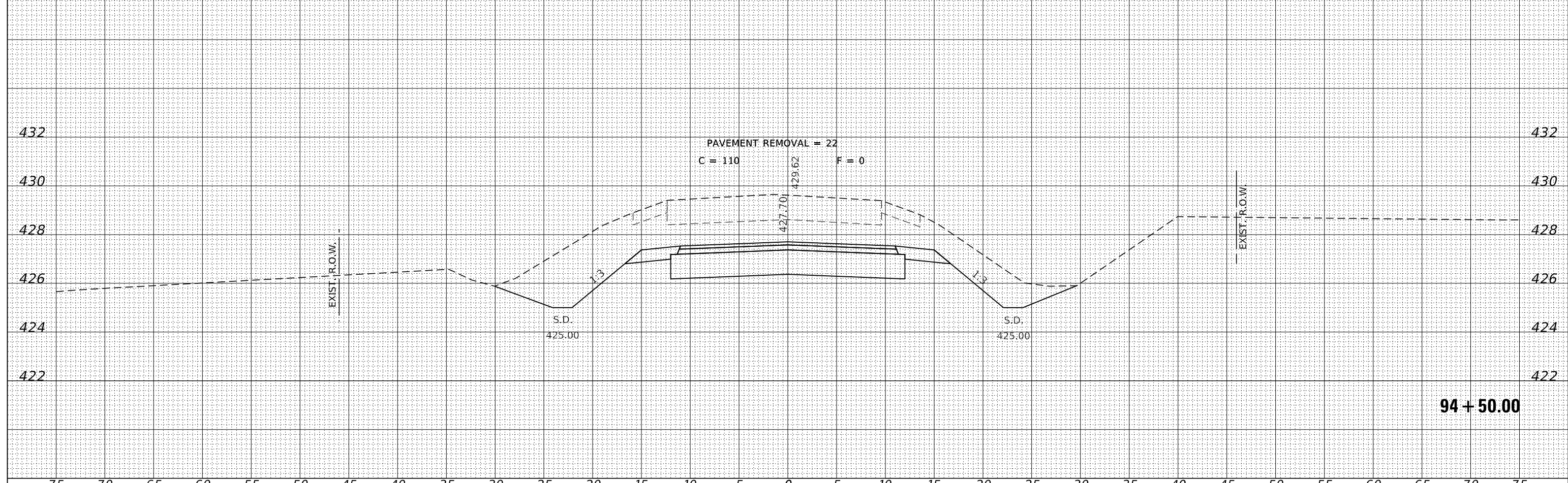


FILE NAME = 200345-shl-xssheets_CH1.dgn	USER NAME = tsmlth	DESIGNED - J.W.F.	REvised -	STATE OF ILLINOIS WAYNE COUNTY HIGHWAY DEPARTMENT	STATION CROSS SECTIONS			F.A.S.	SECTION	COUNTY	TOTAL SHEETS	SHEET NO.
HAMPTON, LENZINI AND RENWICK, INC. 3885 STEVENSON DRIVE, SUITE 201 SPRINGFIELD, ILLINOIS 62703 ILLINOIS PROFESSIONAL DESIGN FIRM LS / PE / SE CORP. 184.009958		DRAWN - T.W.K.	REvised -		797	19-00127-00-SP	WAYNE	26	15			
PLOT SCALE = \$SCALES		CHECKED - S.W.M.	REvised -		CONTRACT NO. 95924			ILLINOIS FED. AID PROJECT G3M(899)				
PLOT DATE = 4/12/2022		DATE - 04/08/2022	REvised -		SCALE: 5H:2V	SHEET NO. 4 OF 15 SHEETS	STA. 93+50.00 TO STA. 94+00.00					

DATE	
BY	
SURVEYED	
PLOTTED	
TEMPLATE	
AREAS CHECKED	
AREAS CHECKED	
FINL SURVEY NO.	
NOTE BOOK NO.	

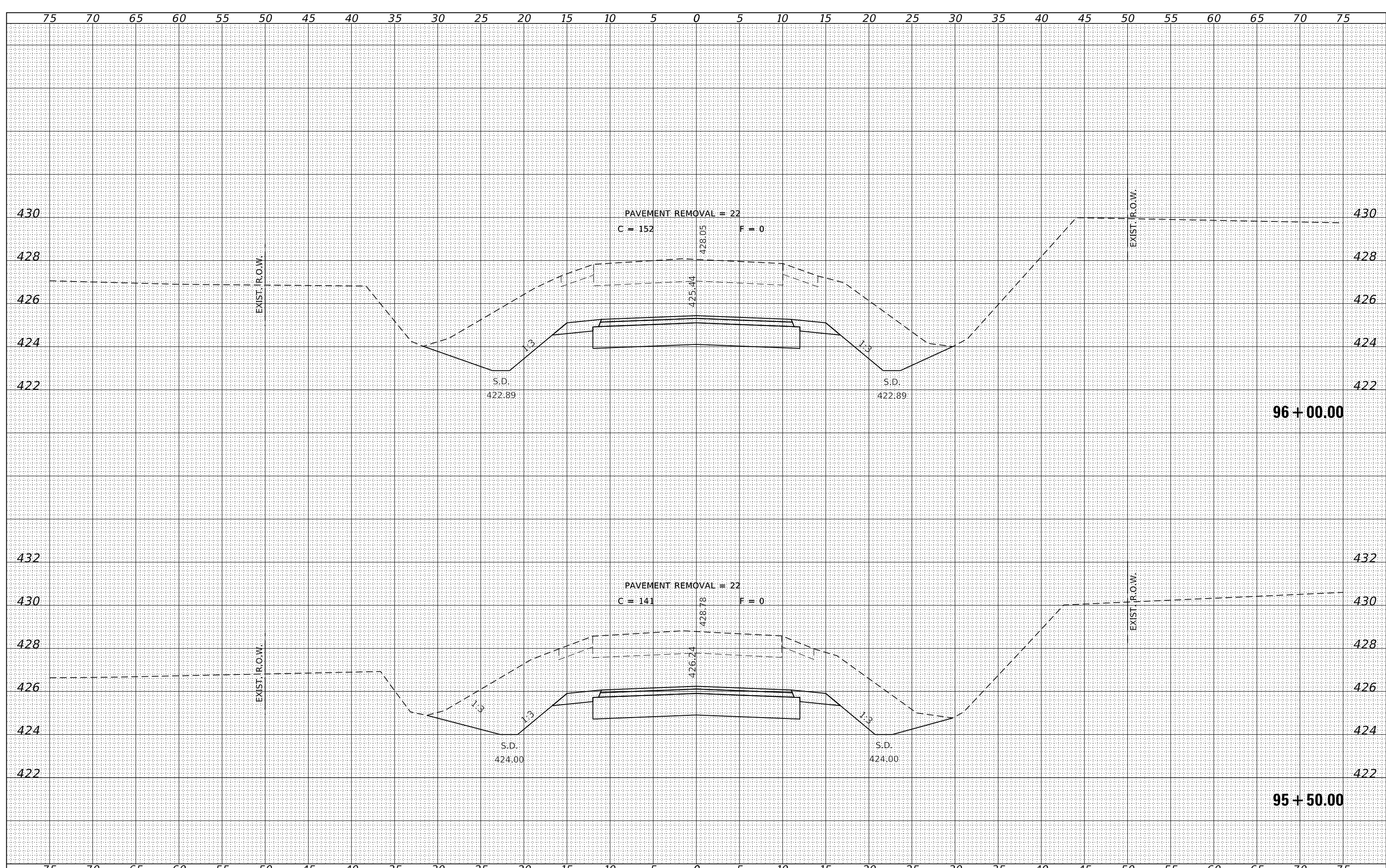


DATE	
BY	
SURVEYED	
PLOTTED	
TEMPLATE	
AREAS CHECKED	
AREAS CHECKED	
ORIGINAL SURVEY NO.	
NOTE BOOK NO.	



FILE NAME = 200345-shl-ssheets_CH1.dgn	USER NAME = tsmlth	DESIGNED - J.W.F.	REVISIONS	STATE OF ILLINOIS WAYNE COUNTY HIGHWAY DEPARTMENT	STATION CROSS SECTIONS C.H. 1	F.A.S.	SECTION	COUNTY	TOTAL SHEETS	SHEET NO.
HAMPTON, LENZINI AND RENWICK, INC. 3885 STEVENSON DRIVE, SUITE 201 SPRINGFIELD, ILLINOIS 62703 ILLINOIS PROFESSIONAL DESIGN FIRM LS / PE / SE CORP. 184.000958			DRAWN - T.W.K.			797	19-00127-00-SP	WAYNE	26	16
PLOT SCALE = \$SCALE\$	CHECKED - S.W.M.	REVISIONS	CONTRACT NO. 95924							
PLOT DATE = 4/12/2022	DATE - 04/08/2022	REVISIONS	ILLINOIS FED. AID PROJECT G3M(899)							
			SCALE: 5H:2V	SHEET NO. 5 OF 15 SHEETS		STA. 94+50.00 TO STA. 95+00.00				

BY _____	DATE _____
FINAL SURVEY _____	SURVEYED _____
NOTE BOOK _____	PLOTTED _____
NO. _____	TEMPLATE _____
	AREAS CHECKED _____
	AREAS CHECKED _____



BY _____	DATE _____
ORIGINAL SURVEY _____	SURVEYED _____
NOTE BOOK _____	PLOTTED _____
NO. _____	TEMPLATE _____
	AREAS CHECKED _____
	AREAS CHECKED _____

FILE NAME = 200345-shl-xssheets_CH1.dgn
HAMPSON, LENZINI AND RENWICK, INC.
3885 STEVENSON DRIVE, SUITE 201
SPRINGFIELD, ILLINOIS 62703
ILLINOIS PROFESSIONAL DESIGN FIRM
L5 / PE / SE CORP. 184-000958

USER NAME = tsmlrh
DESIGNED - J.V.F.
DRAWN - T.W.K.
CHECKED - S.W.M.
DATE - 04/08/2022
PLOT SCALE = $\frac{1}{8}$ " = 1'-0"
PLOT DATE = 4/12/2022

REVISIED -
REVISIED -
REVISIED -
REVISIED -

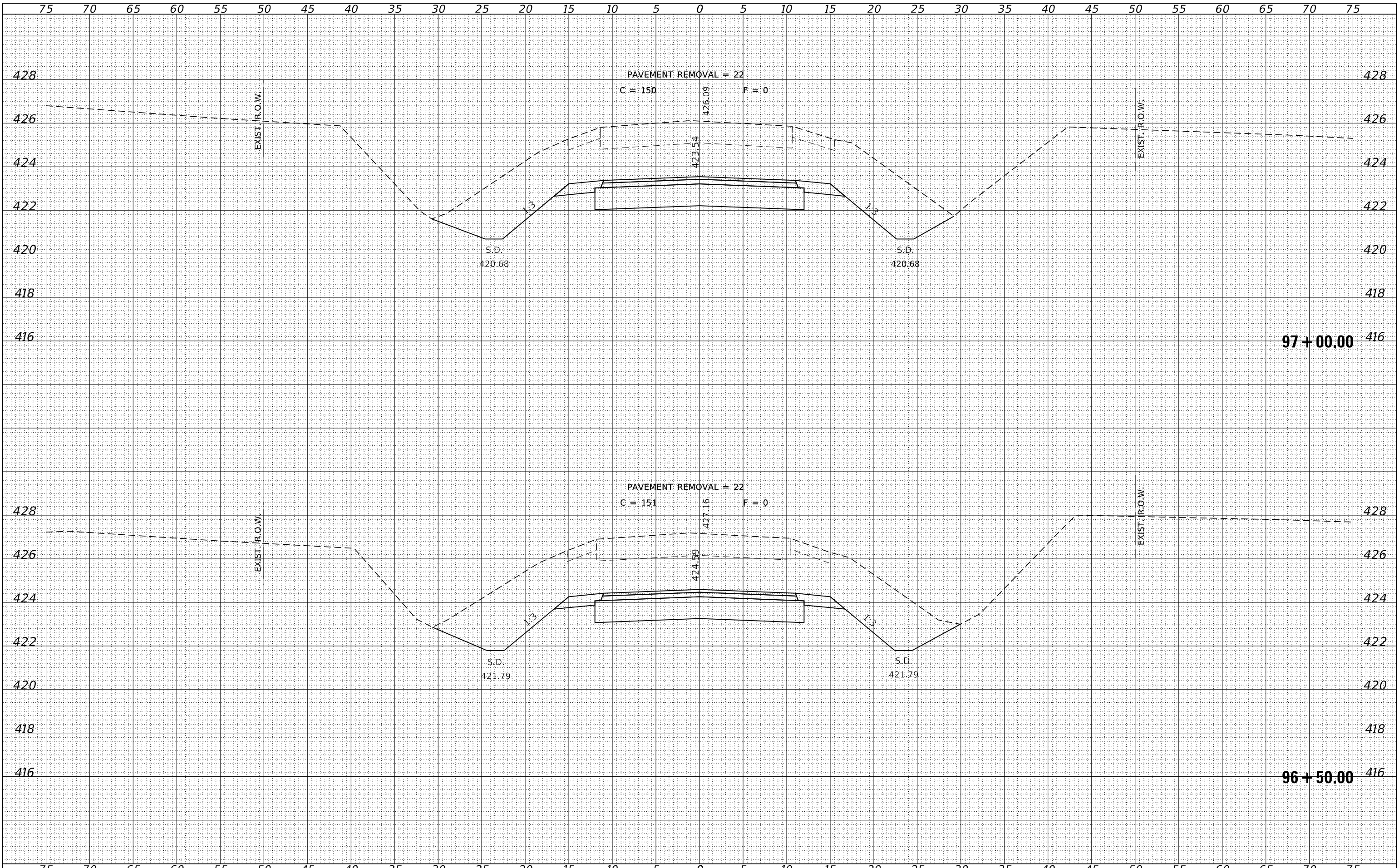
STATE OF ILLINOIS
WAYNE COUNTY HIGHWAY DEPARTMENT

STATION CROSS SECTIONS
C.H. 1
SCALE: 5H:2V
SHEET NO. 6 OF 15 SHEETS
STA. 95+50.00 TO STA. 96+00.00

F.A.S.	SECTION	COUNTY	TOTAL SHEETS	SHEET NO.
797	19-00127-00-SP	WAYNE	26	17
CONTRACT NO. 95924				
ILLINOIS FED. AID PROJECT G3M(899)				

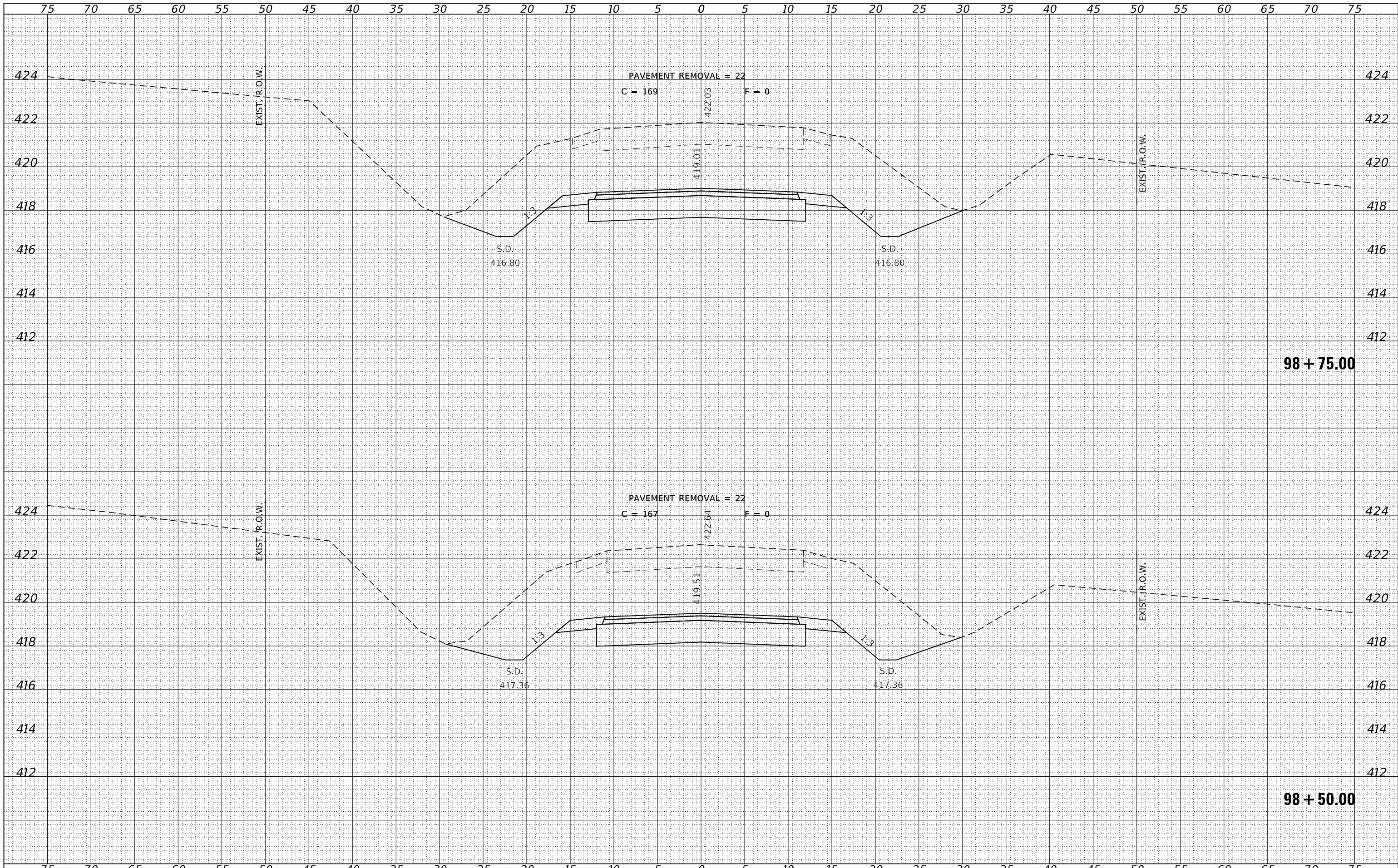
BY	DATE

BY	DATE



BY	DATE
SURVEYED	
PLOTTED	
TEMPLATE	
AREAS	
CHECKED	
FINAL SURVEY	
NOTE BOOK	
NO.	

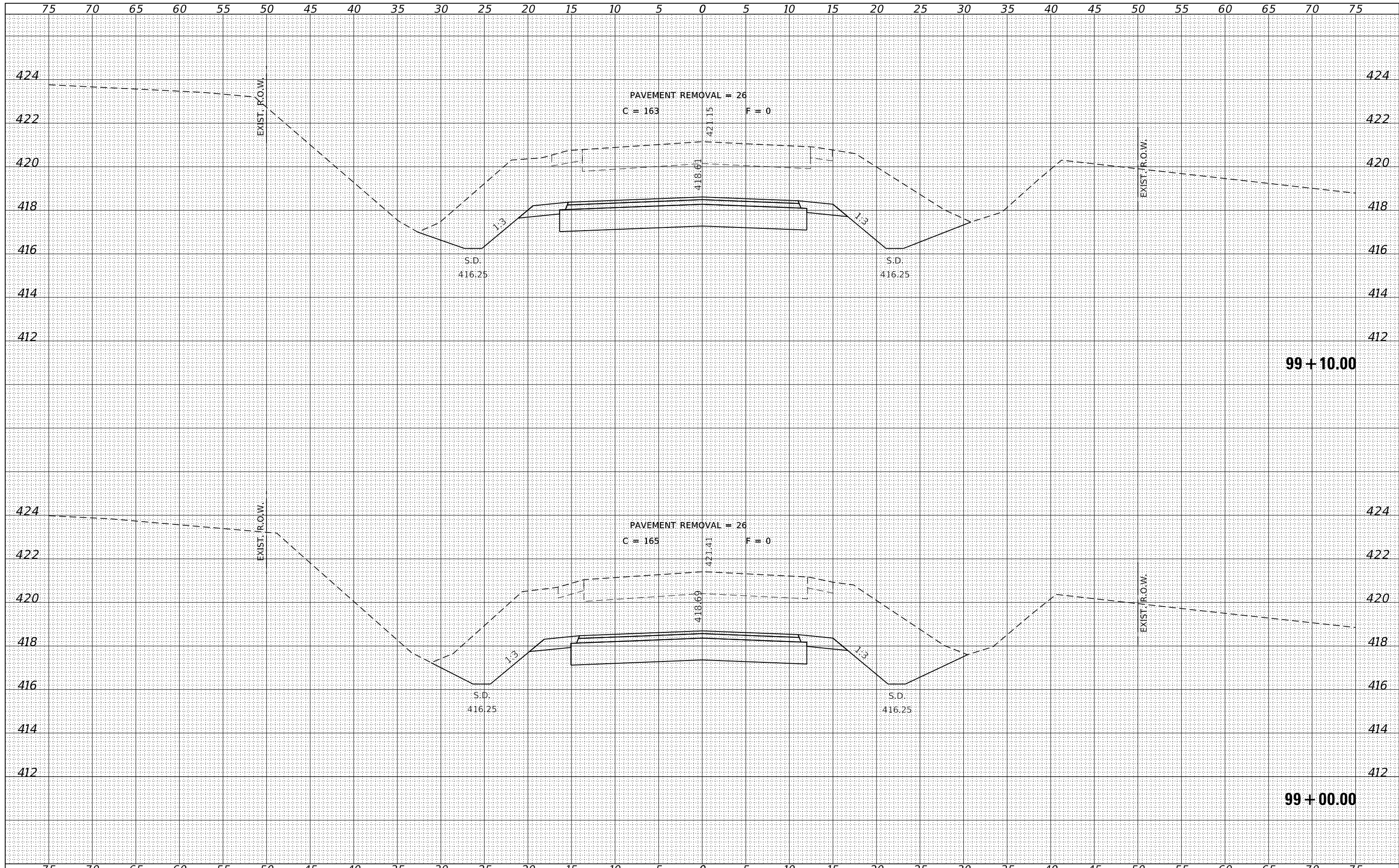
BY	DATE
SURVEYED	
PLOTTED	
TEMPLATE	
AREAS	
CHECKED	
ORIGINAL SURVEY	
NOTE BOOK	
NO.	



FILE NAME = 200345-shl-xssheets_CH1.dgn	USER NAME = tsmlth	DESIGNED - J.V.F.	REVISED -	STATE OF ILLINOIS WAYNE COUNTY HIGHWAY DEPARTMENT	STATION CROSS SECTIONS C.H. 1			F.A.S.	SECTION	COUNTY	TOTAL SHEETS	SHEET NO.
HAMPTON, LENZINI AND RENWICK, INC. 3885 STEVENSON DRIVE, SUITE 201 SPRINGFIELD, ILLINOIS 62703 ILLINOIS PROFESSIONAL DESIGN FIRM L.S. / P.E. / S.E. CORP. 184.009958	PLOT SCALE = \$SCALES	DRAWN - T.W.K.	REVISED -		797	19-00127-00-SP	WAYNE	26	20			
PLOT DATE = 4/12/2022	DATE - 04/08/2022	CHECKED - S.W.M.	REVISED -		SCALE: 5H:2V			SHEET NO. 9 OF 15 SHEETS			STA. 98+50.00 TO STA. 98+75.00	
		REVISOR -	REVISED -		CONTRACT NO. 95924			ILLINOIS FED. AID PROJECT G3M(899)				

DATE	
BY	
FINAL SURVEY NO.	
SURVEYED	
PLOTTED	
TEMPLATE	
AREAS	
CHECKED	

DATE	
BY	
ORIGINAL SURVEY NO.	
SURVEYED	
PLOTTED	
TEMPLATE	
AREAS	
CHECKED	



FILE NAME = 200345-shl-vssheets_CH1.dgn
 HAMPSON, LENZINI AND RENWICK, INC.
 3885 STEVENSON DRIVE, SUITE 201
 SPRINGFIELD, ILLINOIS 62703
 ILLINOIS PROFESSIONAL DESIGN FIRM
 LS / PE / SE CORP. 184.009958

USER NAME = tsmlth
 DESIGNED - J.V.F.
 DRAWN - T.W.K.
 CHECKED - S.W.M.
 DATE - 04/08/2022
 PLOT SCALE = \$\$SCALE\$
 PLOT DATE = 4/12/2022

REVISSED -
 REVISSED -
 REVISSED -
 REVISSED -

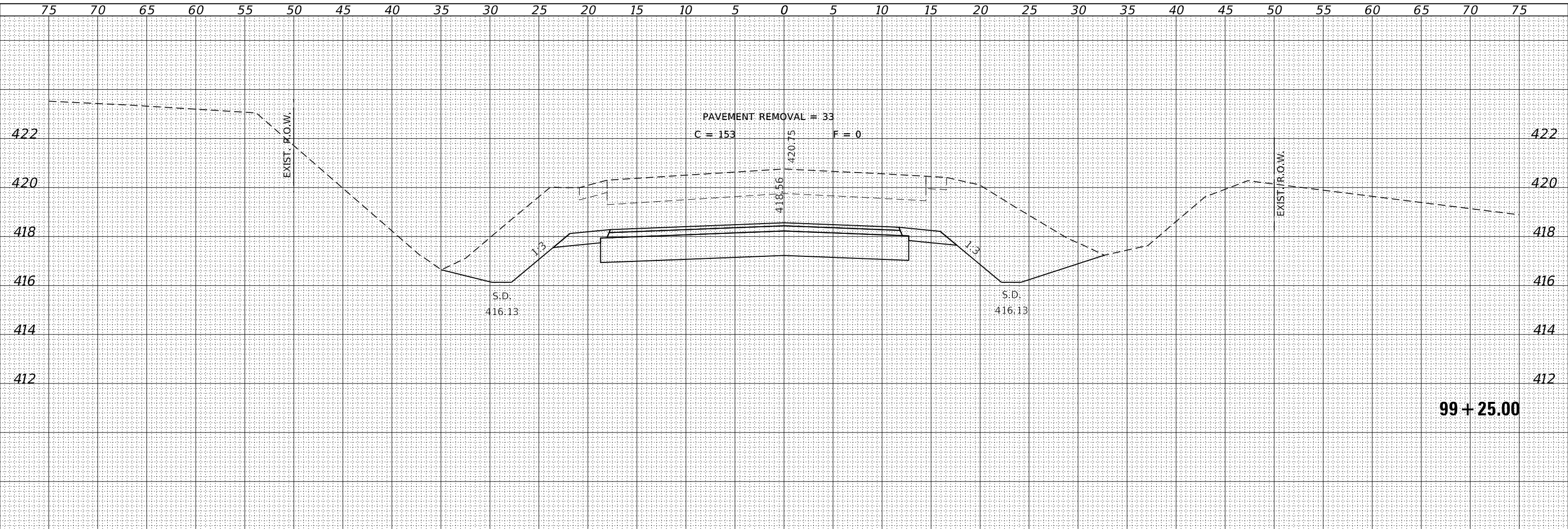
STATE OF ILLINOIS
 WAYNE COUNTY HIGHWAY DEPARTMENT

STATION CROSS SECTIONS
 C.H. 1

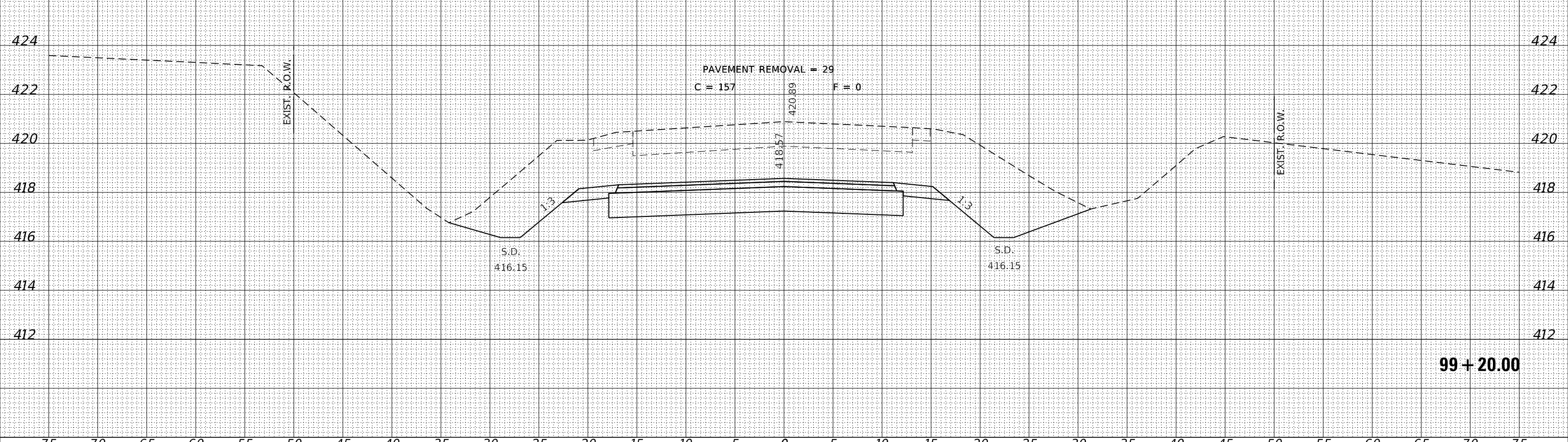
SCALE: 5H:2V SHEET NO. 10 OF 15 SHEETS STA. 99+00.00 TO STA. 99+10.00

F.A.S.	SECTION	COUNTY	TOTAL SHEETS	SHEET NO.
797	19-00127-00-SP	WAYNE	26	21
CONTRACT NO. 95924				
ILLINOIS FED. AID PROJECT G3M(899)				

DATE	
BY	
FINISHED	
NO. _____	
DATE	
BY	
FINISHED	
NO. _____	
DATE	
BY	
FINISHED	
NO. _____	



DATE	
BY	
FINISHED	
NO. _____	
DATE	
BY	
FINISHED	
NO. _____	
DATE	
BY	
FINISHED	
NO. _____	

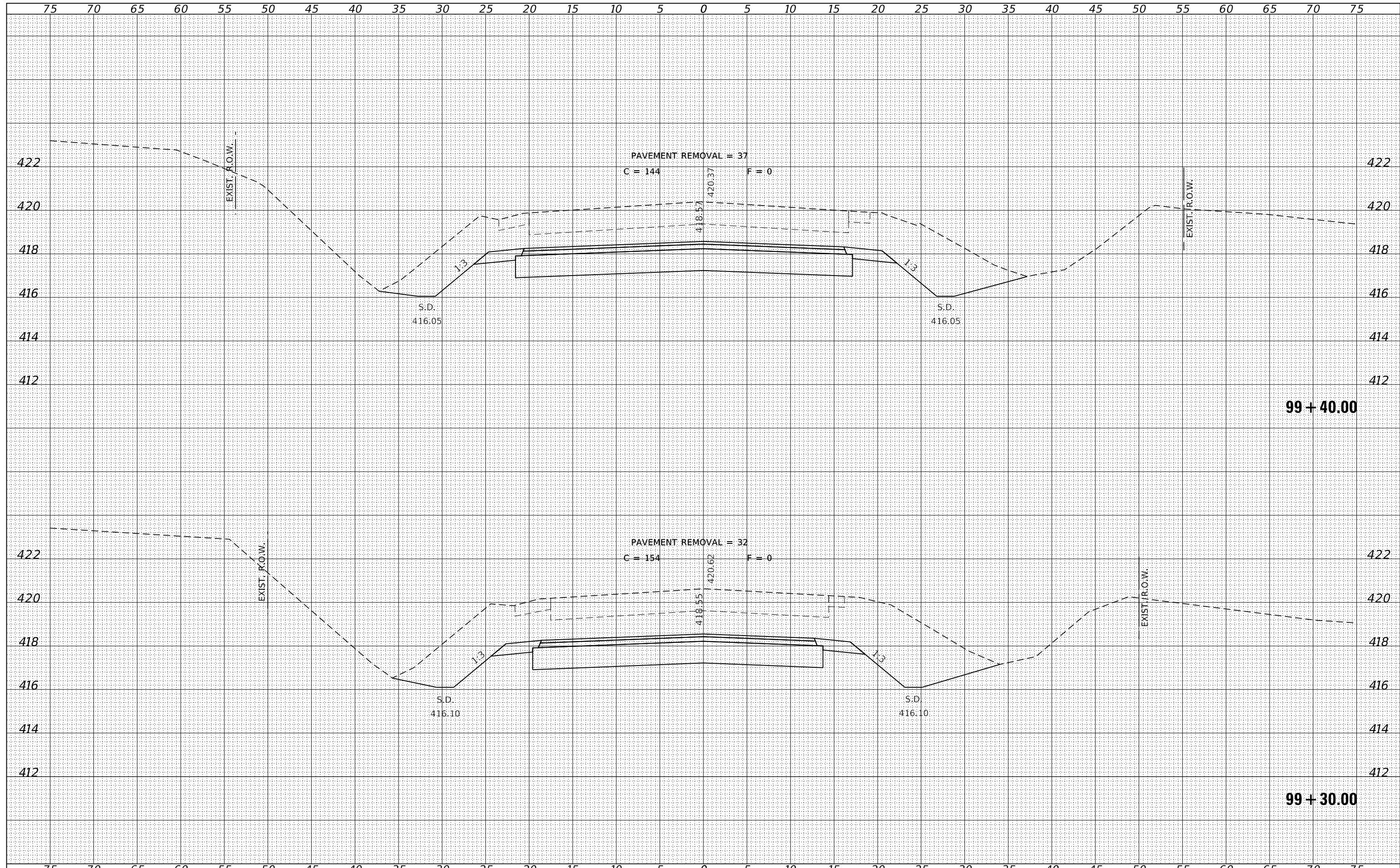


FILE NAME = 200345-shl-ssheets_CH1.dgn	USER NAME = tsmlth	DESIGNED - J.W.F.	REVISD -	<p align="center">STATE OF ILLINOIS WAYNE COUNTY HIGHWAY DEPARTMENT</p> <p align="center">STATION CROSS SECTIONS C.H. 1</p>	F.A.S.	SECTION	COUNTY	TOTAL SHEETS	SHEET NO.
HAMPTON, LENZINI AND RENWICK, INC. 3885 STEVENSON DRIVE, SUITE 201 SPRINGFIELD, ILLINOIS 62703 ILLINOIS PROFESSIONAL DESIGN FIRM L5 / PE / SE CORP. 184.009958	PLOT SCALE = \$SCALES	DRAWN - T.W.K.	REVISD -		797	19-00127-00-SP	WAYNE	26	22
PLOT DATE = 4/12/2022	DATE - 04/08/2022	CHECKED - S.W.M.	REVISD -		CONTRACT NO. 95924				
		DATE - 04/08/2022	REVISD -		ILLINOIS FED. AID PROJECT G3M(899)				

SCALE: 5H:2V SHEET NO. 11 OF 15 SHEETS STA. 99+20.00 TO STA. 99+25.00

DATE	
BY	
FINAL SURVEY	
NO. _____	
SURVEYED	
PLOTTED	
TEMPLATE	
AREAS	
CHECKED	

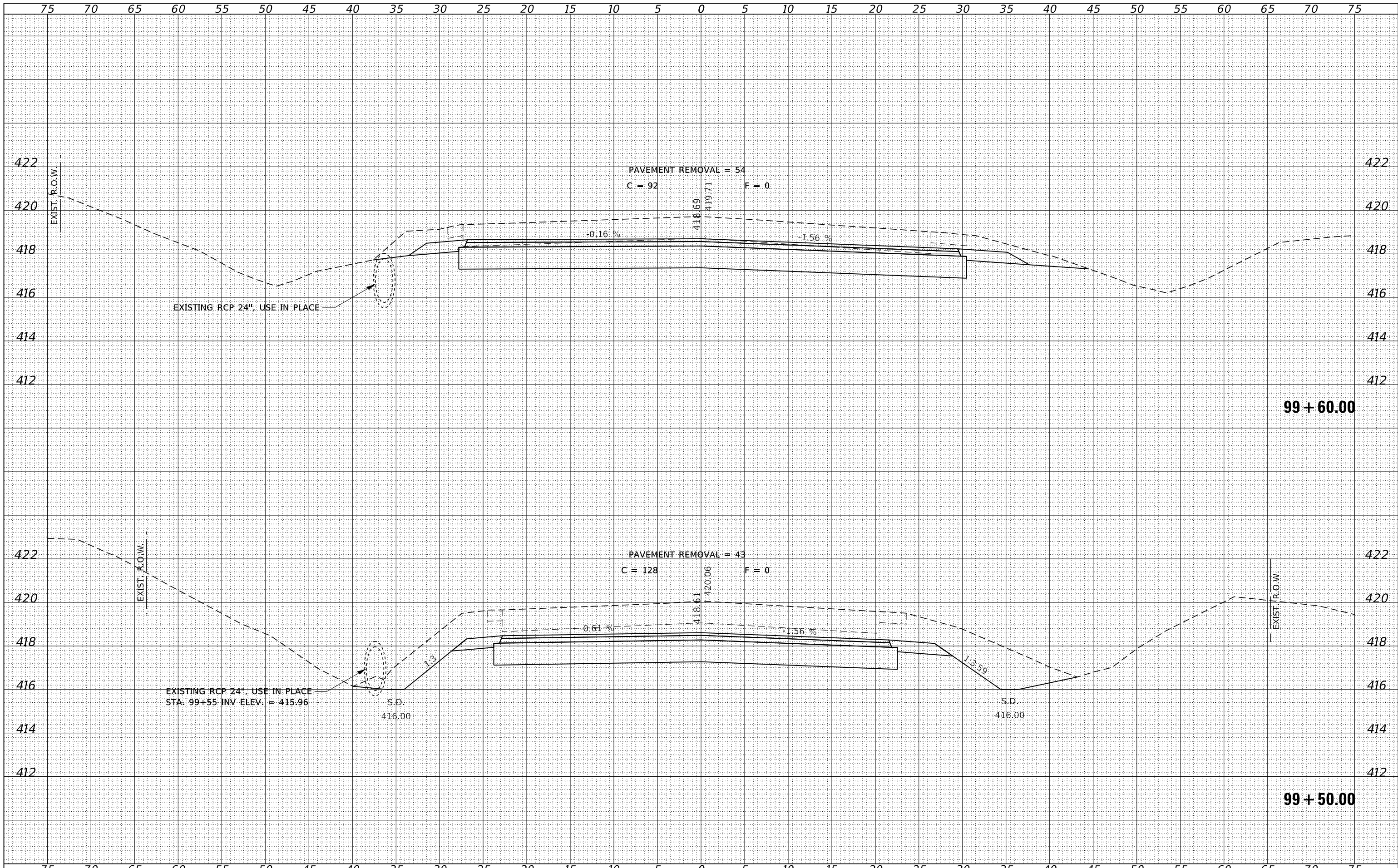
DATE	
BY	
ORIGINAL SURVEY	
NO. _____	
SURVEYED	
PLOTTED	
TEMPLATE	
AREAS	
CHECKED	



FILE NAME = 200345-shl-xssheets_CH1.dgn	USER NAME = tsmlth	DESIGNED - J.W.F.	REVISD -	STATE OF ILLINOIS WAYNE COUNTY HIGHWAY DEPARTMENT	STATION CROSS SECTIONS C.H. 1			F.A.S.	SECTION	COUNTY	TOTAL SHEETS	SHEET NO.
HAMPTON, LENZINI AND RENWICK, INC. 3885 STEVENSON DRIVE, SUITE 201 SPRINGFIELD, ILLINOIS 62703 ILLINOIS PROFESSIONAL DESIGN FIRM L.S. / P.E. / S.E. CORP. 184-009958	PLOT SCALE = \$SCALES	DRAWN - T.W.K.	REVISD -					797	19-00127-00-SP	WAYNE	26	23
PLOT DATE = 4/12/2022	DATE - 04/08/2022	CHECKED - S.W.M.	REVISD -		CONTRACT NO. 95924			ILLINOIS FED. AID PROJECT G3M(899)				
		DATE - 04/08/2022	REVISD -		SCALE: 5H:2V	SHEET NO. 12	OF 15 SHEETS	STA. 99+30.00	TO STA. 99+40.00			

DATE	
BY	
FINISHED SURVEY	
PLOTTED	
NOTE BOOK	
AREAS CHECKED	
NO.	

DATE	
BY	
ORIGINAL SURVEY	
PLOTTED	
NOTE BOOK	
AREAS CHECKED	
NO.	



FILE NAME = 200345-shl-vssheets_CH1.dgn
 USER NAME = tsmlm
 DESIGNED - J.W.F.
 DRAWN - T.W.K.
 CHECKED - S.W.M.
 DATE - 04/08/2022
 PLOT SCALE = \$SCALE\$
 PLOT DATE = 4/12/2022

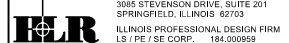
REVISIONS:
 REVISION NO. | DATE | BY | DESCRIPTION
 1 | | | |
 2 | | | |
 3 | | | |

STATE OF ILLINOIS
WAYNE COUNTY HIGHWAY DEPARTMENT

STATION CROSS SECTIONS
C.H. 1

SCALE: 5H:2V SHEET NO. 13 OF 15 SHEETS STA. 99+50.00 TO STA. 99+60.00

F.A.S.	SECTION	COUNTY	TOTAL SHEETS	SHEET NO.
797	19-00127-00-SP	WAYNE	26	24
CONTRACT NO. 95924				
ILLINOIS FED. AID PROJECT G3M(899)				



BY	DATE

DATE	BY

