

STATE OF ILLINOIS  
DEPARTMENT OF TRANSPORTATION

F.A.P. RTE.	SECTION	COUNTY	TOTAL SHEETS	SHEET NO.
407	55(1;2)RS-1;3RS-1	McDONOUGH	7	1
		ILLINOIS	CONTRACT NO. 68H03	

INDEX OF SHEETS

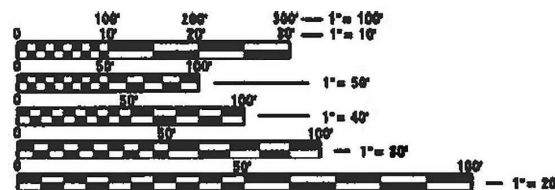
- 1 COVER SHEET
- 2 COMMITMENTS, GENERAL NOTES, AND PROJECT SPECIFIC NOTES
- 3 SUMMARY OF QUANTITIES
- 4 SCHEDULE OF QUANTITIES
- 5 PATCHING DETAIL
- 6 TYPICAL SECTIONS
- 7 LINE DIAGRAM

ILLINOIS HIGHWAY STANDARDS

- 000001-08
- 701201-05
- 701400-11
- 701406-13
- 701411-09
- 701456-05
- 701901-08

DESIGN DESIGNATION

IL 336: PRINCIPAL ARTERIAL  
ADT: 4,200 (2019)  
SU: 275  
MU: 625



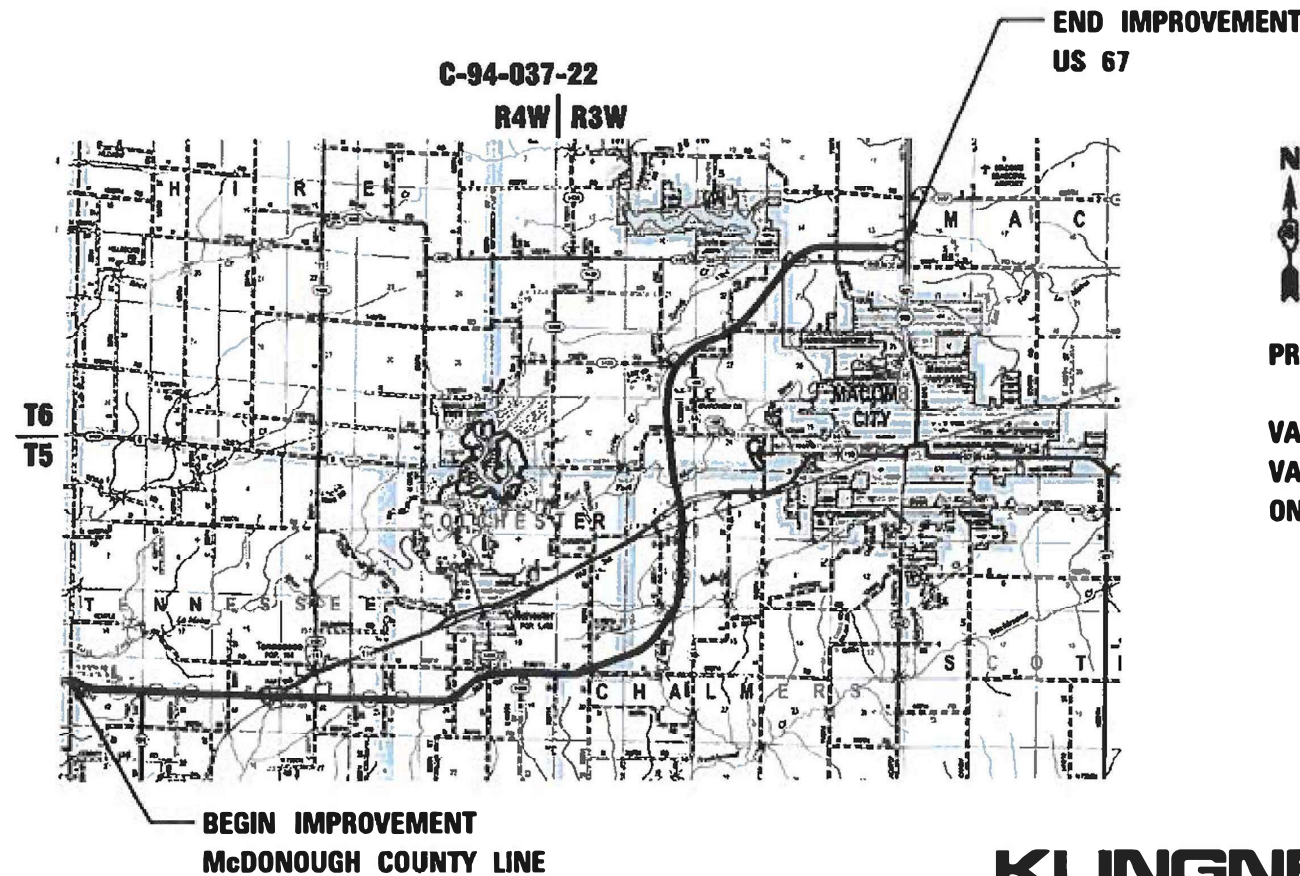
FULL SIZE PLANS HAVE BEEN PREPARED USING STANDARD ENGINEERING SCALES. REDUCED SIZED PLANS WILL NOT CONFORM TO STANDARD SCALES. IN MAKING MEASUREMENTS ON REDUCED PLANS, THE ABOVE SCALES MAY BE USED.

J.U.L.I.E.  
JOINT UTILITY LOCATION INFORMATION FOR EXCAVATORS  
1-800-882-0123  
OR 811

PROJECT ENGINEER: BEN TELLEFSON (309) 671-3333  
PROJECT MANAGER: WILL MOSER (309) 671-3333  
CATALOG NO. 036311-00D  
CONTRACT NO. 68H03

PROPOSED  
HIGHWAY PLANS

FAP ROUTE 407/315A (IL 336/IL 110/US 136)  
SECTION (55-1)RS-1;31RS-3;24RS-5  
CONTRACT MAINTENANCE  
McDONOUGH COUNTY



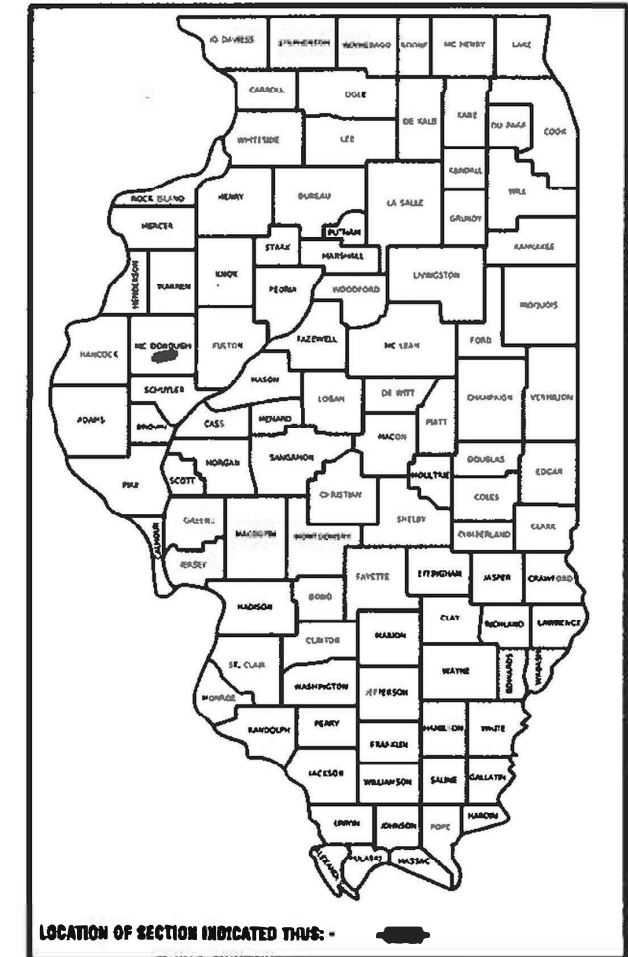
*Mark C. Lee*  
MARK C. LEE DATE 3/7/22

REGISTERED PROFESSIONAL ENGINEER  
STATE OF ILLINOIS NO. 062-060864  
LICENSE EXPIRES NOVEMBER 30, 2023

GROSS LENGTH = 90,816.00 FT. = 17.20 MILE  
NET LENGTH = 90,816.00 FT. = 17.20 MILE

**KLINGNER**  
& ASSOCIATES, P.C.

Engineers • Architects • Surveyors  
www.klingner.com  
Galesburg, Illinois  
49 North Prairie Street  
309.342.4042  
Cody, IL, Hannibal, MO  
Burlington, IA, Peoria, IA, Columbia, MO  
Davenport, IA, Carbondale, IL  
DESIGN FIRM NO. 184-2738



PROJECT DESCRIPTION:

VARIABLE DEPTH HMA MILLING AND HMA PAVING AT VARIOUS LOCATIONS TO CORRECT THE PAVEMENT PROFILE ON IL 336 FROM McDONOUGH COUNTY LINE TO US 67.

STATE OF ILLINOIS  
DEPARTMENT OF TRANSPORTATION

SUBMITTED March 30 to ET  
Ben A. Tellefson  
REGIONAL ENGINEER

May 13, 2022 J. E. A. ERS  
ENGINEER OF DESIGN AND ENVIRONMENT

May 13, 2022 Steph M. F. J. J. J.  
DIRECTOR OF HIGHWAYS PROJECT IMPLEMENTATION

PRINTED BY THE AUTHORITY  
OF THE STATE OF ILLINOIS

## COMMITMENTS

COMMITMENTS ARE NOT TO BE ALTERED WITHOUT THE WRITTEN APPROVAL OF ALL PARTIES TO WHICH THE COMMITMENT WAS MADE.

NO COMMITMENTS HAVE BEEN MADE ON THIS PROJECT.

## ENVIRONMENTAL REVIEWS

PRIOR TO THE USE OF ANY PROPOSED BORROW AREAS, USE AREAS (TEMPORARY ACCESS ROADS, DETOURS, RUN-AROUNDS, ETC.) AND /OR WASTE AREAS, THE CONTRACTOR SHALL FILE THE REQUIRED ENVIRONMENTAL RESOURCE REQUEST SURVEYS ACCORDING TO SECTION 107.22 OF THE STANDARD SPECIFICATIONS. THESE SURVEYS ARE REQUIRED IN ORDER FOR THE DEPARTMENT TO CONDUCT CULTURAL AND BIOLOGICAL RESOURCE SURVEYS FOR THE PROPOSED SITE.

THE REQUIRED ENVIRONMENTAL RESOURCE DOCUMENTATION SHALL INCLUDE THE FOLLOWING:

- BDE FORM 2289 (CULTURAL AND NATURAL RESOURCE REVIEW OF BORROW AREAS)
- BDE FORM 2290 (WASTE/USE AREA REVIEW)
- A LOCATION MAP SHOWING THE SIZE LIMITS AND LOCATION OF THE USE AREA
- COLOR PHOTOGRAPHS DEPICTING THE USE AREA
- BORROW AREA ENTRY AGREEMENT FORM-D4 P10101

PRIOR TO ANY WASTE MATERIALS BEING REMOVED FROM THE CONSTRUCTION SITE THE REQUIRED ENVIRONMENTAL RESOURCE SURVEYS SHALL BE OBTAINED AND FILED BY THE CONTRACTOR. EXCESS WASTE PRODUCTS REMOVED FROM THE CONSTRUCTION SITE SHALL BE DISPOSED OF AS REQUIRED IN SECTION 202.03 OF THE STANDARD SPECIFICATIONS.

ANY PROTRUDING METAL BARS SHALL BE REMOVED PRIOR TO THE DISPOSAL OF BROKEN CONCRETE AT APPROVED DISPOSAL SITES.

PLEASE NOTE THAT A MINIMUM OF FOUR WEEKS SHALL BE ALLOWED FOR THE DISTRICT TO OBTAIN THE REQUIRED WASTE SITE ENVIRONMENTAL CLEARANCES AND SIX WEEKS FOR THE REQUIRED BORROW SITE ENVIRONMENTAL CLEARANCES.

## JOB SPECIFICATIONS

1. FLAGGERS, WHEN SHOWN, SHALL BE INCLUDED IN THE COST OF TRAFFIC CONTROL STANDARD PAY ITEMS.
2. TWO CHANGEABLE MESSAGE SIGNS SHALL BE PLACED IN ADVANCE OF THE PROJECT. ONE PER EACH DIRECTION OF TRAVEL ON IL 336 ONE WEEK PRIOR TO CONSTRUCTION.

## HOT-MIX ASPHALT MIXTURE REQUIREMENTS

THE FOLLOWING MIXTURE REQUIREMENTS ARE APPLICABLE FOR THIS PROJECT

LOCATION(S)	MAINLINE
MIXTURE USE(S):	SURFACE
PG:	SBS 76-28
DESIGN AIR VOIDS:	4% N70
MIXTURE COMPOSITION:	POLYMERIZED IL 9.5
FRICTION AGGREGATE:	MIX D
MIXTURE WEIGHT:	112.0 LB/SY/IN
QUALITY MANAGEMENT PROGRAM:	QC/QA
SUBLOT SIZE:	N/A
MATERIAL TRANSFER DEVICE:	NO

NOTES:

1) INDIVIDUAL LIFT THICKNESS OF EACH MIX TYPE WILL BE NO LESS THAN 3 TIMES NOMINAL MAXIMUM AGGREGATE SIZE AND NO MORE THAN 6 TIMES NOMINAL MAXIMUM.

2) FOR DESIGN PURPOSES, MIXTURE WEIGHT FOR ALL MIXES IS DETERMINED TO BE 112.0 LB./S.Y./IN., UNLESS OTHERWISE NOTED.

THE HMA MATERIAL SHALL MATCH THE ELEVATION OF THE SURROUNDING PAVEMENT AFTER FINAL COMPACTION. BUMPS GREATER THAN 1/4", MEASURED WITH A 16' STRAIGHT EDGE, LEFT AFTER COMPACTION SHALL BE REMOVED WITH PAVEMENT SURFACE GRINDING EQUIPMENT IN ACCORDANCE WITH ARTICLE 1101.04 OF THE STANDARD SPECIFICATION.

MODEL: D:\p\h\... FILE NAME: 03\_11\es\31081\_IDOT - DST - 4 - P10\_201\_023\Work\_Order\_03 - Western DA118\_Transportation\IL\_336\_McDonough County Line to US 67\CAD\_Sheets\Notes.dwg

**KLINGNER & ASSOCIATES, P.C.**  
 Engineers • Architects • Surveyors  
 www.klingner.com  
 Galesburg, Illinois      Quincy, IL, Macomb, MO  
 40 North Prairie Street      Burlington, MA, Plover, WI, Columbia, MO  
 562-343-6942      Danvers, IL, Columbus, IA

USER NAME = mirch	DESIGNED - MCR	REVISED -
	DRAWN - MCR	REVISED -
PLOT SCALE = 100,0000 ' / in.	CHECKED - MCL	REVISED -
PLOT DATE = 3/25/2022	DATE -	REVISED -

**STATE OF ILLINOIS  
DEPARTMENT OF TRANSPORTATION**

**COMMITMENTS, GENERAL NOTES,  
AND PROJECT SPECIFIC NOTES**

SCALE: NONE    SHEET 2 OF 7 SHEETS    STA. N/A TO STA. N/A

F.A.P. RTE.	SECTION	COUNTY	TOTAL SHEETS	SHEET NO.
407	55[(1,2)RS-1;3RS];31RS-1	McDONOUGH	7	2
CONTRACT NO. 68H03				
ILLINOIS FED. AID PROJECT				



MOBILIZATION	
LOCATION	L SUM
IL 336	1
TOTAL	1

TRAFFIC CONTROL & PROTECTION (SPECIAL)	
LOCATION	L SUM
IL 336	1
TOTAL	1

POLYMERIZED BIT MATERIALS (TACK COAT)	
LOCATION	POUND
IL 336	231
TOTAL	231

RAISED REFLECTIVE PAVEMENT MARKER REMOVAL	
LOCATION	EACH
IL 336	30
TOTAL	30

O/S	STA	LENGTH	WIDTH	AREA	HMA REMOVAL VARIABLE DEPTH	HMA REMOVAL BUTT JOINT	HMA POLY SURFACE	DEPTH
		FT	FT	SQ YD	SQ YD	SQ YD	TON	INCH
LT	16+00 TO 16+41.5	41.5	38.5	177.5	177.5	85.6	33.3	2.25
LT	12+05 TO 12+45	40	38.5	171.1	171.1	85.6	32.5	2.25
RT	11+38 TO 12+48	110	38.5	470.6	470.6	85.6	70.1	2.25
RT	284+33 TO 284+73	40	38.5	171.1	171.1	85.6	31.4	2.25
RT	285+75 TO 286+45	70	38.5	299.4	299.4	85.6	64.9	3
RT	770+64 TO 771+10	46	40.67	207.9	207.9	90.4	37.7	2.25
TOTAL					1498	518	270	

LOCATIONS WITH 2.25" OF HMA SHALL BE CONSTRUCTED IN ONE 2.25" LIFT.  
 LOCATIONS WITH 3" OF HMA SHALL BE CONSTRUCTED IN TWO 1.5" LIFTS.

CHANGEABLE MESSAGE SIGN	
LOCATION	CAL DAY
IL 336	28
TOTAL	28

MODEL: D:\p\h\l...  
 FILE NAME: C:\3\files\21081\_IDOT - DST - 4 - P7B\_201623\Work\_Order\_03 - Western DA\18\_Transportation\IL\_336\_McDonough County\_Line\_to\_US\_67\CAD\_Sheets\Schedule\_of\_Quantities.dgn

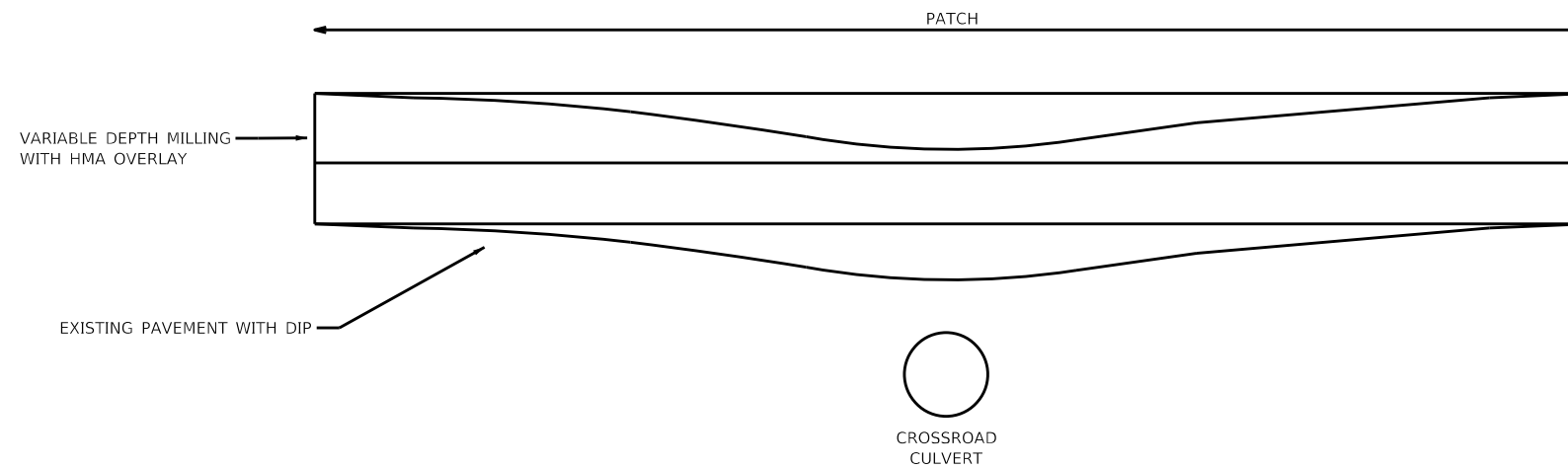
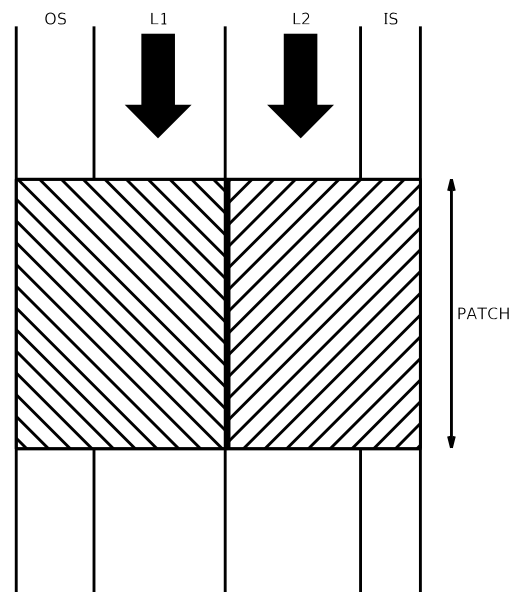


USER NAME = mirch	DESIGNED - MCR	REVISED -
PLOT SCALE = 100,0000 ' / in.	DRAWN - MCR	REVISED -
PLOT DATE = 3/22/2022	CHECKED - MCL	REVISED -
	DATE -	REVISED -

**STATE OF ILLINOIS**  
**DEPARTMENT OF TRANSPORTATION**

SCHEDULE OF QUANTITIES			
SCALE:	SHEET	OF	SHEETS
NONE	4	7	
STA. N/A	TO STA. N/A		

F.A.P. RTE.	SECTION	COUNTY	TOTAL SHEETS	SHEET NO.
407	55[(1,2)RS-1;3RS];31RS-1	McDONOUGH	7	4
CONTRACT NO. 68H03				
ILLINOIS FED. AID PROJECT				



**CONSTRUCTION SEQUENCE:**

1. CLOSE RIGHT-LANE, MOVING TRAFFIC TO LANE 2 (L2) AND INSIDE SHOULDER (IS)
2. VARIABLE DEPTH MILL L1 WITH A STRINGLINE TO ESTABLISH A MILLED SURFACE BELOW FINAL GRADE THAT ELIMINATES THE DIP.
3. MILL OS TO MATCH L1.
4. SAWCUT AND TRANSVERSE MILL 10' BUTT JOINTS AT BOTH ENDS OF PATCH FOR L1 AND OS
5. CLEAN MILLED SURFACE WITH MECHANICAL BROOM
6. TACK COAT MILLED SURFACE
7. PAVE HMA OVERLAY OF L1 WITH A STRINGLINE TO ESTABLISH GRADE
8. PAVE HMA OVERLAY OF OS TO MATCH L1
9. SWITCH TRAFFIC FROM L2 TO L1 AND OS
10. VARIABLE DEPTH MILL L2 AND IS TO MATCH L1 AND ALLOW FOR HMA OVERLAY
11. SAWCUT AND TRANSVERSE MILLING 10' BUTT JOINTS AT BOTH ENDS OF PATCH FOR L2 AND IS
12. CLEAN MILLED SURFACE WITH MECHANICAL BROOM
13. TACK COAT MILLED SURFACE
14. PAVE HMA OVERLAY OF L2 AND IS

MODEL: D:\p\h\...  
 FILE NAME: C:\Users\j13081\DOT - DST - 4 - PTD 201623\Work\_Order\_03 - Western DA\18\_Transportation\11\_336\_McDonough\_County\_Line\_to\_US\_67\CAD\_Sheets\Patching\_Detail.dwg  
 Galesburg, Illinois  
 40 North Payne Street  
 62524-4402

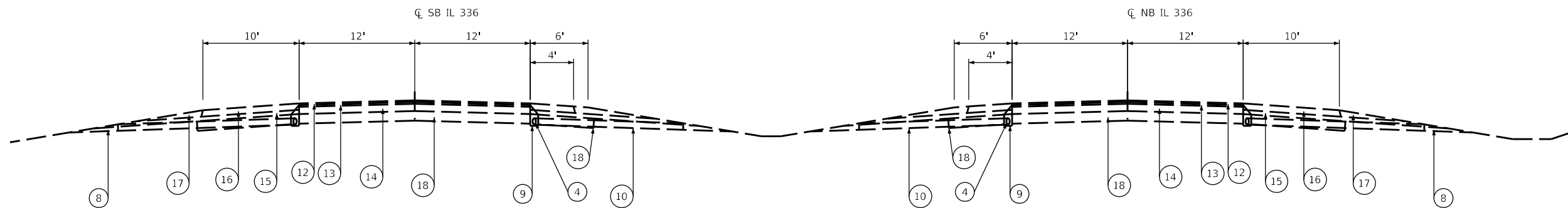
**KLINGNER & ASSOCIATES, P.C.**  
 Engineers • Architects • Surveyors  
 www.klingner.com  
 Galesburg, Illinois  
 Quincy, IL, Macomb, MO  
 Burlington, MA, Plover, WI, Columbia, MD  
 Danvers, IL, Columbus, IA

USER NAME = mirch	DESIGNED - MCR	REVISED -
	DRAWN - MCR	REVISED -
PLOT SCALE = 100,0000' / in.	CHECKED - MCL	REVISED -
PLOT DATE = 3/18/2022	DATE -	REVISED -

**STATE OF ILLINOIS  
DEPARTMENT OF TRANSPORTATION**

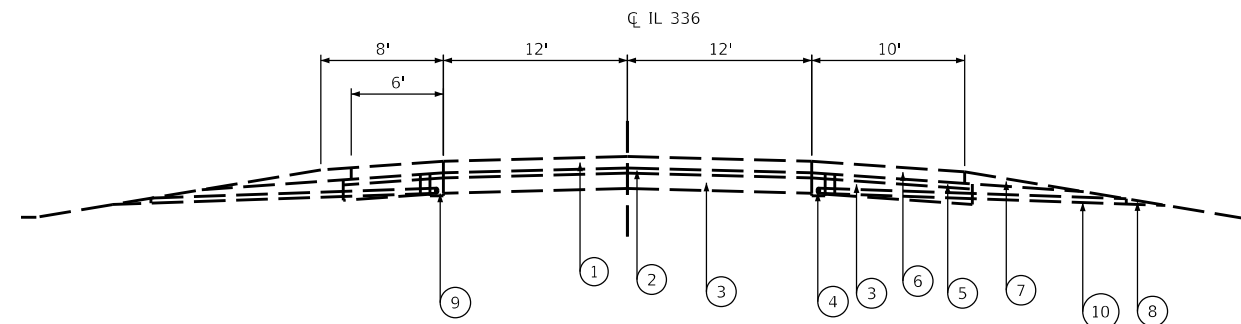
<b>PATCHING DETAIL</b>			
SCALE: NONE	SHEET 5	OF 7 SHEETS	STA. N/A TO STA. N/A

F.A.P. RTE.	SECTION	COUNTY	TOTAL SHEETS	SHEET NO.
407	55[(1,2)RS-1;3RS];31RS-1	McDONOUGH	7	5
CONTRACT NO. 68H03				
ILLINOIS FED. AID PROJECT				



EXISTING TYPICAL IL 336 SECTION  
(McDONOUGH COUNTY LINE TO US 136)

STA 1405+21.21 TO STA 1405+25.00 (EB LANES ONLY)  
 STA 1405+25.00 TO STA 1411+17.86 (EB & WB LANES)  
 STA 1420+62.14 TO STA 1433+87.40 (EB & WB LANES)  
 STA 16+54.52 TO STA 17+49.92 (EB & WB LANES)  
 STA 26+94.39 TO STA 42+96.81 (EB & WB LANES)  
 STA 55+50.58 TO STA 70+84.42 (EB & WB LANES)  
 STA 80+29.71 TO STA 111+00.13 (EB & WB LANES)  
 STA 120+44.77 TO STA 128+00.00 (EB & WB LANES)



EXISTING TYPICAL IL 336 SECTION  
(US 136 TO US 67)

STA 541+57.14 TO STA 546+24.47 - SB ONLY  
 STA 546+24.47 TO STA 548+25.25  
 STA 575+11.16 TO STA 577+00.00

LEGEND

- |                                              |                                                      |                                        |
|----------------------------------------------|------------------------------------------------------|----------------------------------------|
| ① EXISTING P.C.C. PAVEMENT, 9", (JOINTED)    | ⑨ EXISTING FA-4 OR FM-4 SAND                         | ⑰ EXISTING AGGREGATE SHOULDERS, TYPE B |
| ② EXISTING STABILIZED SUB-BASE, 4"           | ⑩ EXISTING PIPE UNDERDRAINS 4" AT 2% SLOPE           | ⑱ EXISTING MODIFIED SOILS              |
| ③ EXISTING LIME MODIFIED SOIL, 12" MIN       | ⑪ EXISTING AGGREGATE WEDGE SHOULDERS, TYPE B, 9"     |                                        |
| ④ EXISTING PIPE UNDERDRAINS, 4"              | ⑫ EXISTING POLYMERIZED HMA SURFACE COURSE, 2"        |                                        |
| ⑤ EXISTING COMPACTED SUBGRADE (EMBANKMENT)   | ⑬ EXISTING POLYMERIZED HMA BINDER COURSE, 2.25"      |                                        |
| ⑥ EXISTING P.C.C. SHOULDERS, 9"              | ⑭ EXISTING HMA BINDER COURSE, 9"                     |                                        |
| ⑦ EXISTING AGGREGATE SHOULDERS, TYPE B, 9"   | ⑮ EXISTING SUB-BASE GRANULAR MATERIAL, TYPE C, 5.25" |                                        |
| ⑧ EXISTING CONCRETE HEADWALL FOR PIPE DRAINS | ⑯ EXISTING BITUMINOUS SHOULDERS, 8"                  |                                        |

MODEL: D:\p1\11081\_11081.IDOT - DIST 4 - P110 201.023\Work Order 03 - Western DA\11081 Transportation\11081 McDouough County Line to US 67\CAD Sheets\Typical Sheets.dgn  
 FILE NAME: C:\Users\11081\_11081.IDOT - DIST 4 - P110 201.023\Work Order 03 - Western DA\11081 Transportation\11081 McDouough County Line to US 67\CAD Sheets\Typical Sheets.dgn

**KLINGNER & ASSOCIATES, P.C.**  
 Engineers • Architects • Surveyors  
 Galesburg, Illinois  
 40 North Payne Street  
 Galesburg, IL 62541

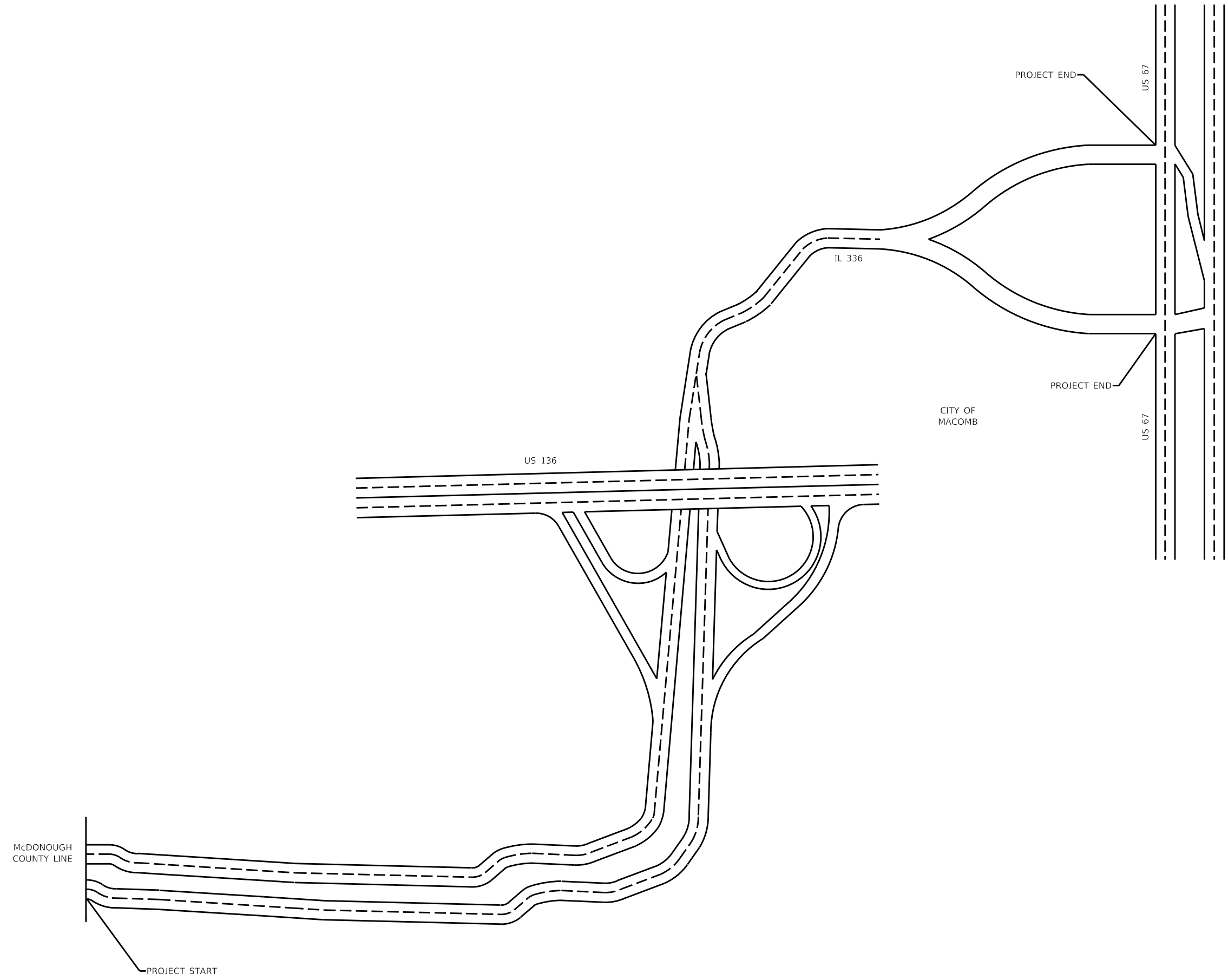
USER NAME = mirch	DESIGNED - MCR	REVISED -
PLOT SCALE = 100.0:0.0000 " = 1" / in.	DRAWN - MCR	REVISED -
PLOT DATE = 3/18/2022	CHECKED - MCL	REVISED -
	DATE -	REVISED -

**STATE OF ILLINOIS  
DEPARTMENT OF TRANSPORTATION**

TYPICAL SECTIONS			
SCALE: NONE	SHEET 6	OF 7 SHEETS	STA. N/A TO STA. N/A

F.A.P. RTE.	SECTION	COUNTY	TOTAL SHEETS	SHEET NO.
407	55[(1.2)RS-1;3RS];31RS-1	McDONOUGH	7	6
CONTRACT NO. 68H03				
ILLINOIS FED. AID PROJECT				

MODEL: I:\default\FILE NAME: C:\Ifiles\213081\_IDOT - DIST 4 - P7B 201623\Work\Outdr\_03 - Western DA\18\_Transportation\IL\_336\_McDonough County Line to US 67\CAD\_SheetLine\_Diagram.dwg



**KLINGNER & ASSOCIATES, P.C.**  
 Engineers • Architects • Surveyors  
 Galesburg, Illinois  
 40 North Prairie Street  
 Galesburg, IL 62541

USER NAME = mirch	DESIGNED - MCR	REVISED -
DRAWN - MCR	REVISED -	
PLOT SCALE = 100,0000' / in.	CHECKED - MCL	REVISED -
PLOT DATE = 3/18/2022	DATE -	REVISED -

**STATE OF ILLINOIS  
 DEPARTMENT OF TRANSPORTATION**

LINE DIAGRAM			
SCALE: NONE	SHEET 7	OF 7 SHEETS	STA. N/A TO STA. N/A

F.A.P. RTE.	SECTION	COUNTY	TOTAL SHEETS	SHEET NO.
407	55[(1.2)RS-1;3RS];31RS-1	McDONOUGH	7	7
CONTRACT NO. 68H03				
ILLINOIS FED. AID PROJECT				