

STATE OF ILLINOIS
DEPARTMENT OF TRANSPORTATION
DIVISION OF HIGHWAYS

**PROPOSED
HIGHWAY PLANS**

FAU ROUTE 9166 (ST. CLAIR AVE)
SECTION 82-1-12LS-2

EAST ST. LOUIS
EAST ST. LOUIS

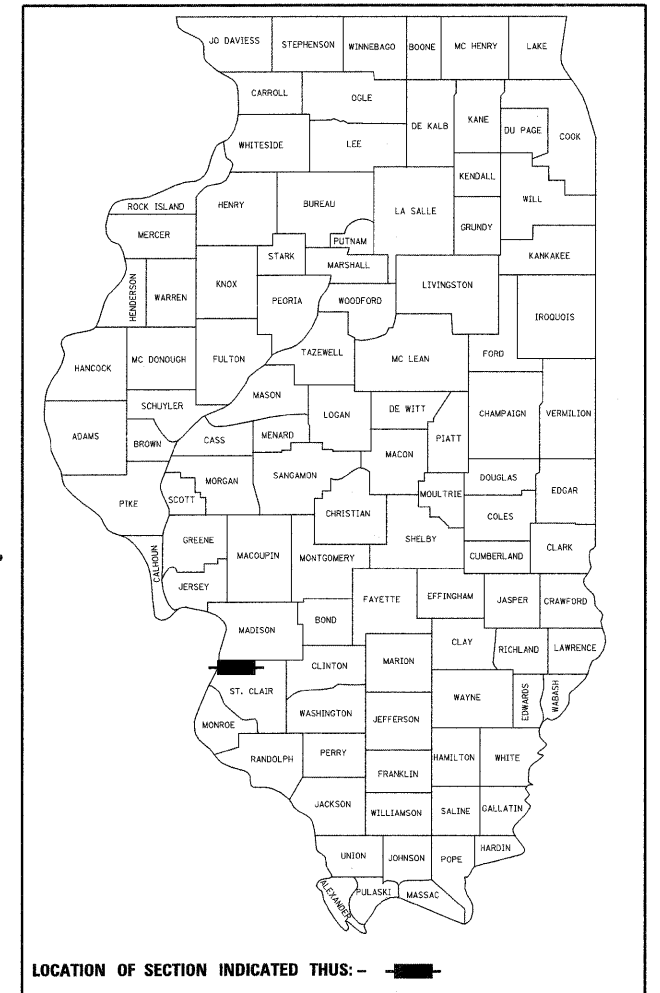
ST. CLAIR COUNTY
C-98-029-12

PROPOSED ST. CLAIR AVENUE
LANDSCAPING AT 9TH STREET

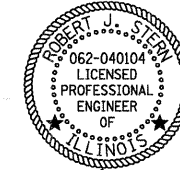
F.A.U. RTE.	SECTION	COUNTY	TOTAL SHEETS	SHEET NO.
9166	82-1-12LS-2	ST. CLAIR	29	1
FED. ROAD DIST. NO.	ILLINOIS	CONTRACT NO.	76F36	

*29+1 = 30

D-98-025-12



LOCATION OF SECTION INDICATED THUS: -



ROBERT J. STERN

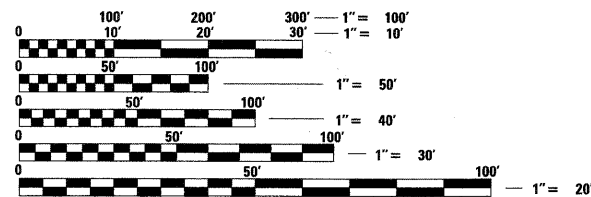
EXPIRES: 11/30/13
DATE: 3/19/12
SHEETS: 1-4, 9-15

FOR INDEX OF SHEETS, SEE SHEET NO. 2

DESIGN DESIGNATIONS		POSTED /DESIGN SPEEDS:	
ST. CLAIR AVE.	13,905 (2030) MINOR ARTERIAL	ST. CLAIR AVE.	30 /30 MPH
9TH STREET	7,585 (2030) COLLECTOR	9TH STREET	20 /20 MPH
RAMP "1/3"	2,245 (2030) FREEWAY RAMP	RAMP "1/3"	25 /25 MPH

PROJECT LOCATED IN: EAST ST. LOUIS, ILLINOIS

PLANS
1" = 20'
1" = 10'

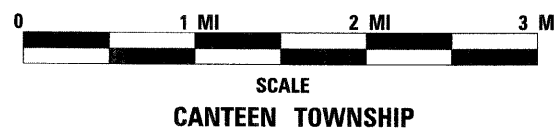
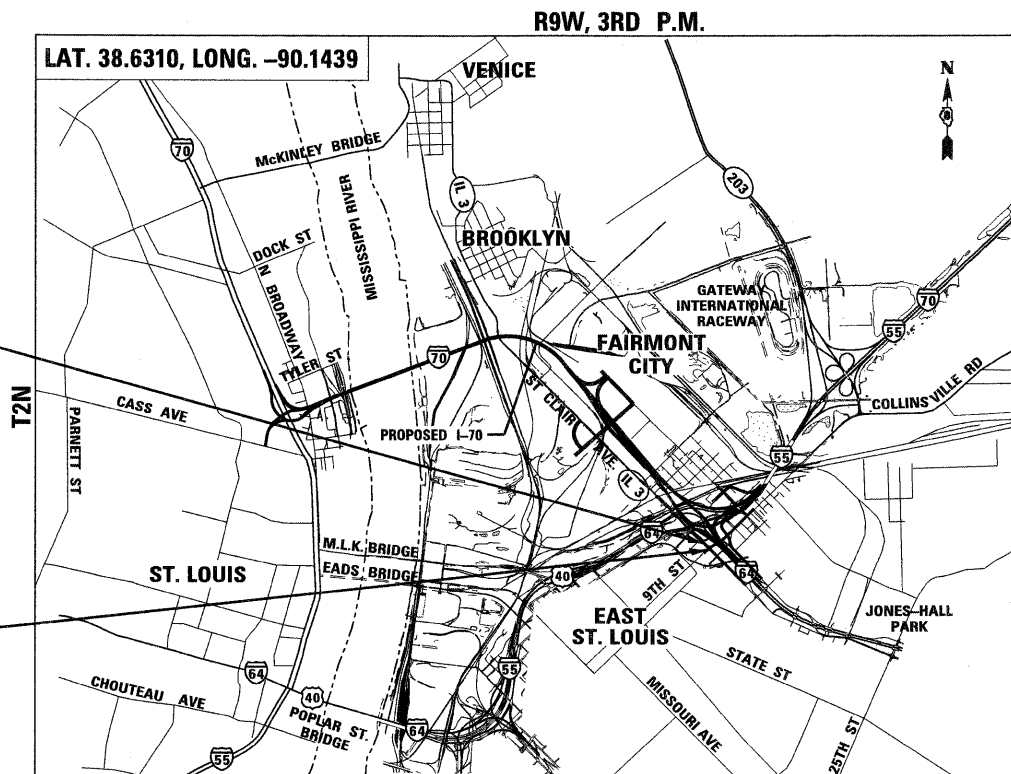


FULL SIZE PLANS HAVE BEEN PREPARED USING STANDARD ENGINEERING SCALES. REDUCED SIZED PLANS WILL NOT CONFORM TO STANDARD SCALES. IN MAKING MEASUREMENTS ON REDUCED PLANS, THE ABOVE SCALES MAY BE USED.

J.U.L.I.E.
JOINT UTILITY LOCATION INFORMATION FOR EXCAVATION
1-800-892-0123
OR 811

ST. CLAIR AVE.
STA. 53+29.74 TO STA. 71+98.24

9TH STREET
STA. 16+57.21 TO STA. 20+00.00



GROSS /NET LENGTH OF PROJECT: 0.419 MI (2,211.29')
ST. CLAIR AVE. 0.354 MI (1,868.50')
9TH ST. 0.065 MI (342.79')

PROJECT ENGINEER : MICHAEL D. PRITCHETT (618) 346-3180
PROJECT MANAGER : N/A

CONTRACT NO. 76F36

TENG

TENG & ASSOCIATES, INC.
ENGINEERS/ARCHITECTS/PLANNERS
205 N. MICHIGAN AVE. CHICAGO, IL 60601
TELEPHONE: 312-616-0000

STATE OF ILLINOIS
DEPARTMENT OF TRANSPORTATION
DIVISION OF HIGHWAYS

SUBMITTED March 21 20 12

Deputy Director of Highways, Region Engineer

May 05 20 12
John D. Bosamelli, P.E. acting
ENGINEER OF DESIGN AND ENVIRONMENT

May 05 20 12
William R. Frey, Jr. acting
DIRECTOR OF HIGHWAYS, CHIEF ENGINEER

PRINTED BY THE AUTHORITY
OF THE STATE OF ILLINOIS