

PART OF THE SW 1/4 OF SECTION 7, T2N, R9W OF THE 3RD PM, ST. CLAIR COUNTY, ILLINOIS



PROP. CURVE 64W55S-2  
 PI STA. = 126+23.96  
 $\Delta = 69^\circ 27' 35''$  (LT)  
 $D = 7^\circ 34' 58''$   
 $R = 755.61'$   
 $T = 523.79'$   
 $L = 916.03'$   
 $E = 163.79'$   
 P.C. STA. = 121+00.17  
 P.T. STA. = 130+16.20

PROP. CURVE 64W55S-3  
 PI STA. = 131+97.14  
 $\Delta = 17^\circ 49' 53''$  (LT)  
 $D = 4^\circ 58' 04''$   
 $R = 1,153.36'$   
 $T = 180.94'$   
 $L = 358.95'$   
 $E = 14.11'$   
 P.C. STA. = 130+16.20  
 P.T. STA. = 133+75.15

PROP. CURVE 55N64E-2  
 PI STA. = 57+08.92  
 $\Delta = 2^\circ 17' 42''$  (RT)  
 $D = 1^\circ 08' 45''$   
 $R = 5,000.00'$   
 $T = 100.16'$   
 $L = 200.29'$   
 $E = 1.00'$   
 P.C. STA. = 56+08.76  
 P.T. STA. = 58+09.05

PROP. CURVE 55N-2  
 PI STA. = 62+39.34  
 $\Delta = 10^\circ 09' 06''$  (LT)  
 $D = 1^\circ 50' 43''$   
 $R = 3,105.00'$   
 $T = 275.79'$   
 $L = 550.14'$   
 $E = 12.22'$   
 P.C. STA. = 59+63.55  
 P.T. STA. = 65+13.69

PROP. CURVE RAMPJ-1  
 PI STA. = 15+76.18  
 $\Delta = 99^\circ 13' 34''$  (LT)  
 $D = 52^\circ 05' 13''$   
 $R = 110.00'$   
 $T = 129.31'$   
 $L = 190.50'$   
 $E = 59.77'$   
 P.C. STA. = 14+46.88  
 P.T. STA. = 16+37.38

PROP. CURVE RAMPJ-2  
 PI STA. = 17+17.62  
 $\Delta = 71^\circ 12' 54''$  (LT)  
 $D = 51^\circ 07' 48''$   
 $R = 112.06'$   
 $T = 80.25'$   
 $L = 139.28'$   
 $E = 25.77'$   
 P.C. STA. = 16+37.38  
 P.T. STA. = 17+76.66

PROP. CURVE RAMPJ-3  
 PI STA. = 22+83.56  
 $\Delta = 6^\circ 23' 44''$  (LT)  
 $D = 2^\circ 39' 52''$   
 $R = 2,150.42'$   
 $T = 120.15'$   
 $L = 240.04'$   
 $E = 3.35'$   
 P.C. STA. = 21+63.42  
 P.T. STA. = 24+03.46

PROP. CURVE 55S-6  
 PI STA. = 97+85.47  
 $\Delta = 15^\circ 22' 19''$  (LT)  
 $D = 4^\circ 24' 36''$   
 $R = 1,299.24'$   
 $T = 175.34'$   
 $L = 348.58'$   
 $E = 11.78'$   
 P.C. STA. = 96+10.13  
 P.T. STA. = 99+58.71

PROP. CURVE RAMPK-2  
 PI STA. = 19+02.19  
 $\Delta = 42^\circ 22' 31''$  (RT)  
 $D = 11^\circ 01' 06''$   
 $R = 520.00'$   
 $T = 201.57'$   
 $L = 384.59'$   
 $E = 37.70'$   
 P.C. STA. = 17+00.63  
 P.T. STA. = 20+85.21

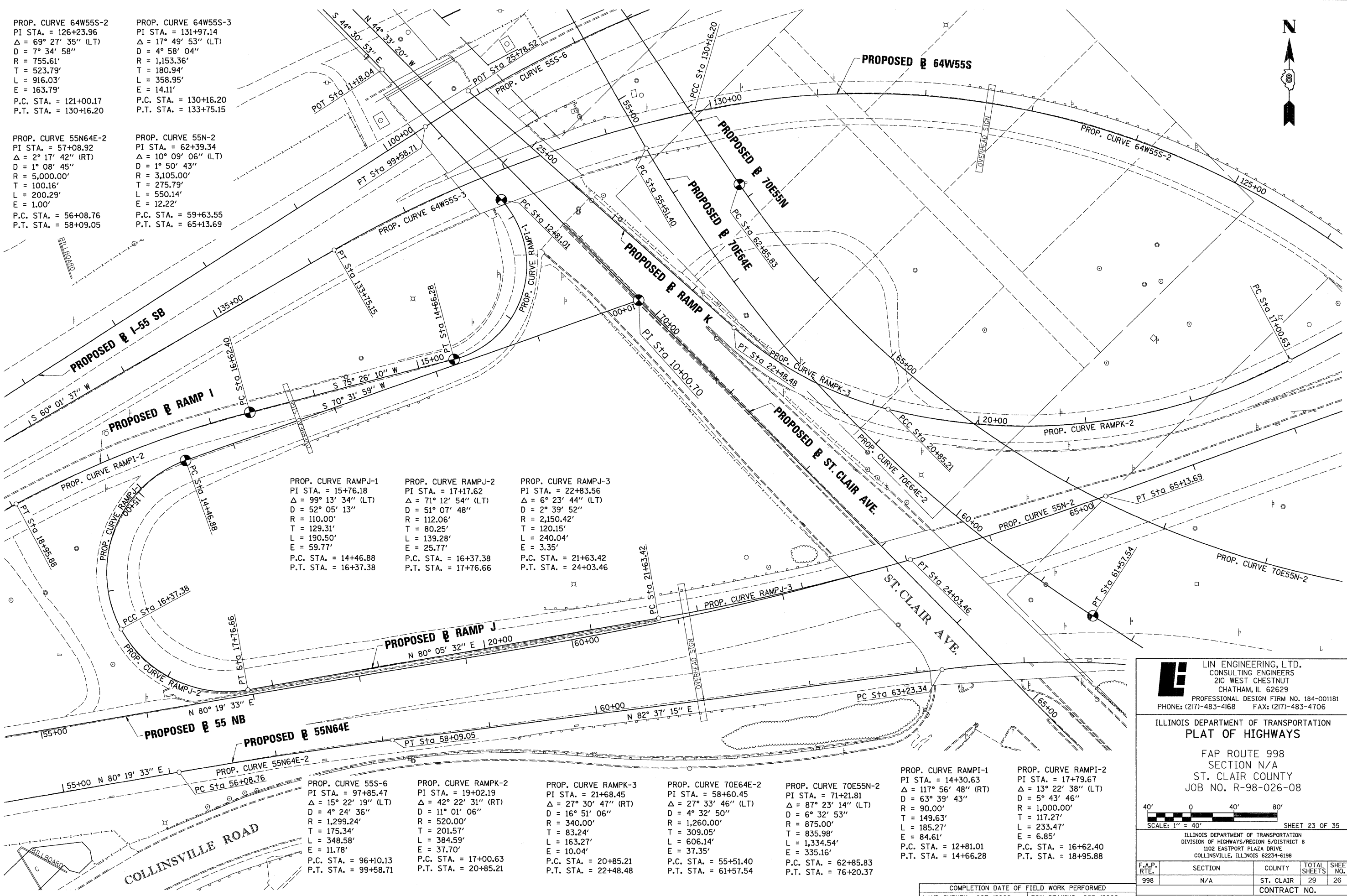
PROP. CURVE RAMPK-3  
 PI STA. = 21+68.45  
 $\Delta = 27^\circ 30' 47''$  (RT)  
 $D = 16^\circ 51' 06''$   
 $R = 340.00'$   
 $T = 83.24'$   
 $L = 163.27'$   
 $E = 10.04'$   
 P.C. STA. = 20+85.21  
 P.T. STA. = 22+48.48

PROP. CURVE 70E64E-2  
 PI STA. = 58+60.45  
 $\Delta = 27^\circ 33' 46''$  (LT)  
 $D = 4^\circ 32' 50''$   
 $R = 1,260.00'$   
 $T = 309.05'$   
 $L = 606.14'$   
 $E = 37.35'$   
 P.C. STA. = 55+51.40  
 P.T. STA. = 61+57.54

PROP. CURVE 70E55N-2  
 PI STA. = 71+21.81  
 $\Delta = 87^\circ 23' 14''$  (LT)  
 $D = 6^\circ 32' 53''$   
 $R = 875.00'$   
 $T = 1,334.54'$   
 $E = 335.16'$   
 P.C. STA. = 62+85.83  
 P.T. STA. = 76+20.37

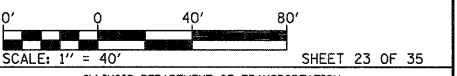
PROP. CURVE RAMPK-1  
 PI STA. = 14+30.63  
 $\Delta = 117^\circ 56' 48''$  (RT)  
 $D = 63^\circ 39' 43''$   
 $R = 90.00'$   
 $T = 149.63'$   
 $L = 185.27'$   
 $E = 84.61'$   
 P.C. STA. = 12+81.01  
 P.T. STA. = 14+66.28

PROP. CURVE RAMPK-2  
 PI STA. = 17+79.67  
 $\Delta = 13^\circ 22' 38''$  (LT)  
 $D = 5^\circ 43' 46''$   
 $R = 1,000.00'$   
 $T = 117.27'$   
 $L = 233.47'$   
 $E = 6.85'$   
 P.C. STA. = 16+62.40  
 P.T. STA. = 18+95.88



**Lin Engineering, Ltd.**  
 CONSULTING ENGINEERS  
 210 WEST CHESTNUT  
 CHATHAM, IL 62629  
 PROFESSIONAL DESIGN FIRM NO. 184-001181  
 PHONE: (217)-483-4168 FAX: (217)-483-4706

ILLINOIS DEPARTMENT OF TRANSPORTATION  
**PLAT OF HIGHWAYS**  
 FAP ROUTE 998  
 SECTION N/A  
 ST. CLAIR COUNTY  
 JOB NO. R-98-026-08



ILLINOIS DEPARTMENT OF TRANSPORTATION  
 DIVISION OF HIGHWAYS/REGION 5/DISTRICT 8  
 1102 EASTPORT PLAZA DRIVE  
 COLLINSVILLE, ILLINOIS 62234-6198

F.A.P. RTE.	SECTION	COUNTY	TOTAL SHEETS	SHEET NO.
998	N/A	ST. CLAIR	29	26
CONTRACT NO.				

COMPLETION DATE OF FIELD WORK PERFORMED	
LAND SURVEY: OCT./2009	ROW STAKING: OCT./2009

PLOT DATE = 10/19/2009  
 FILE NAME = 07FILEL8  
 PLOT SCALE = 1/4" = 40'  
 USER NAME = USER8