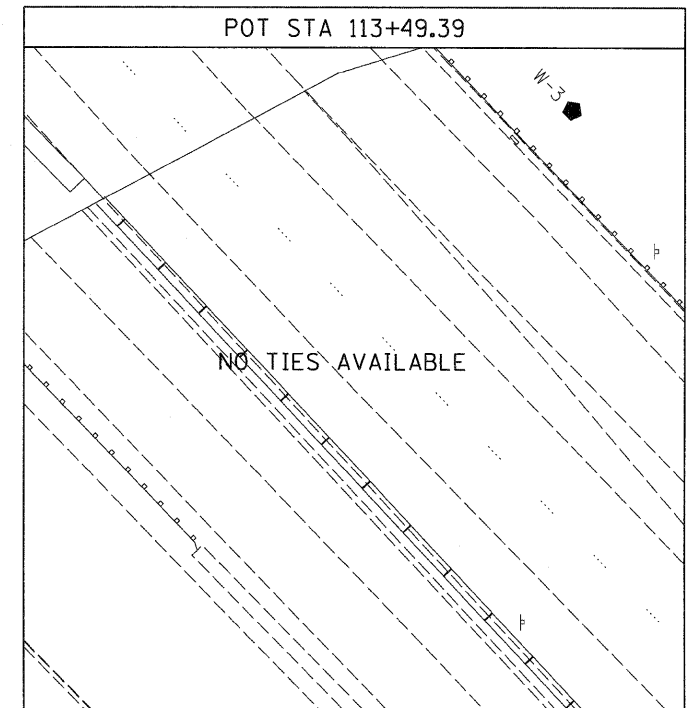
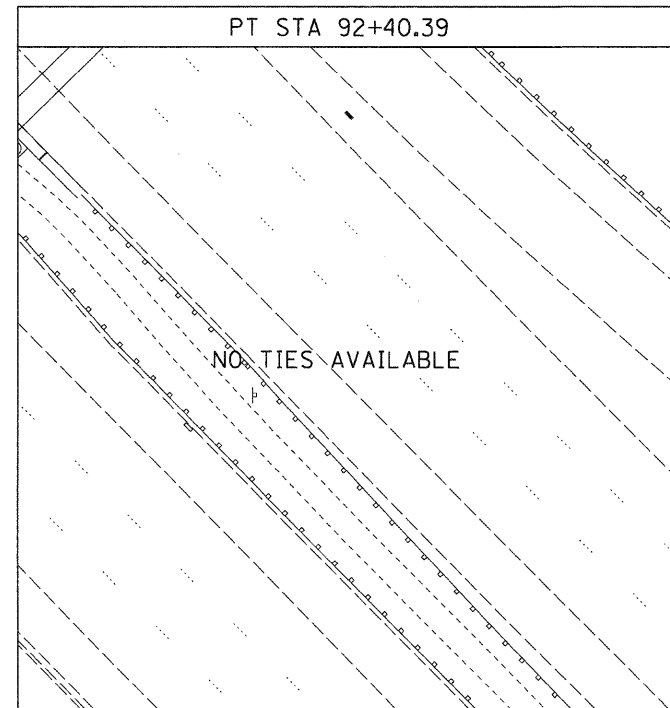
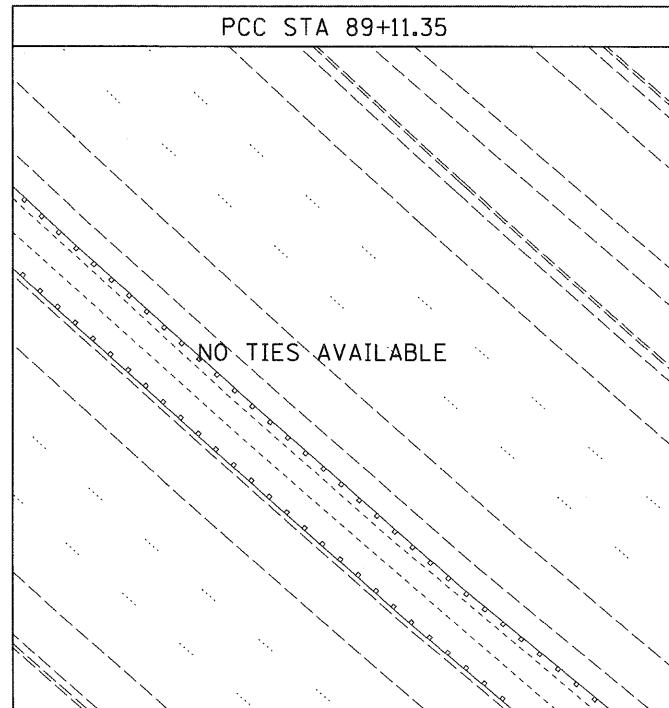
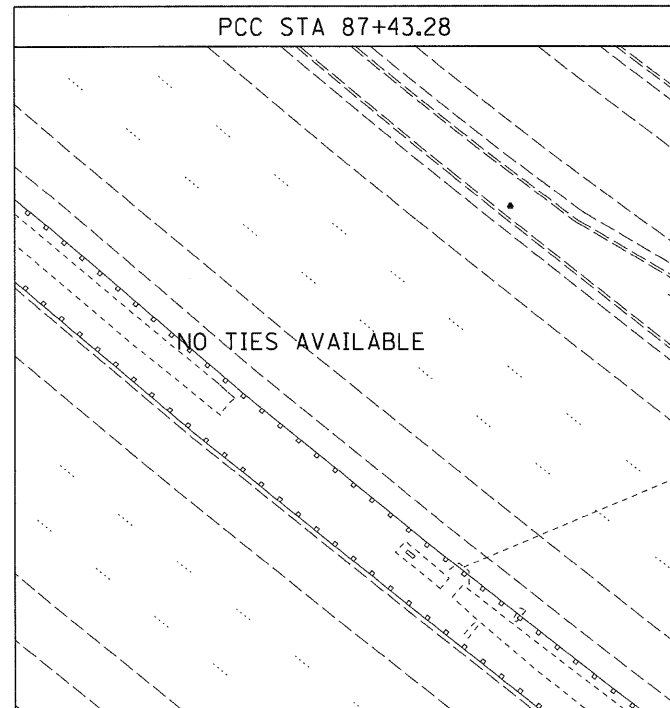
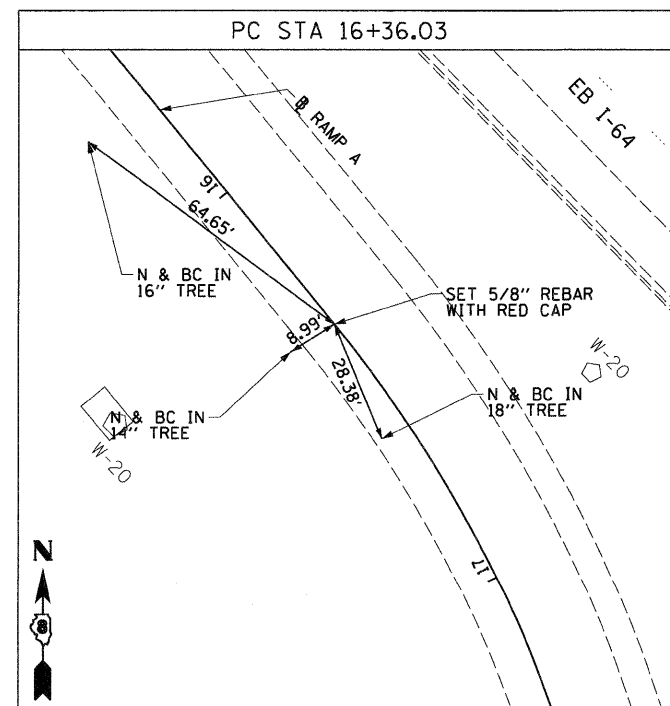
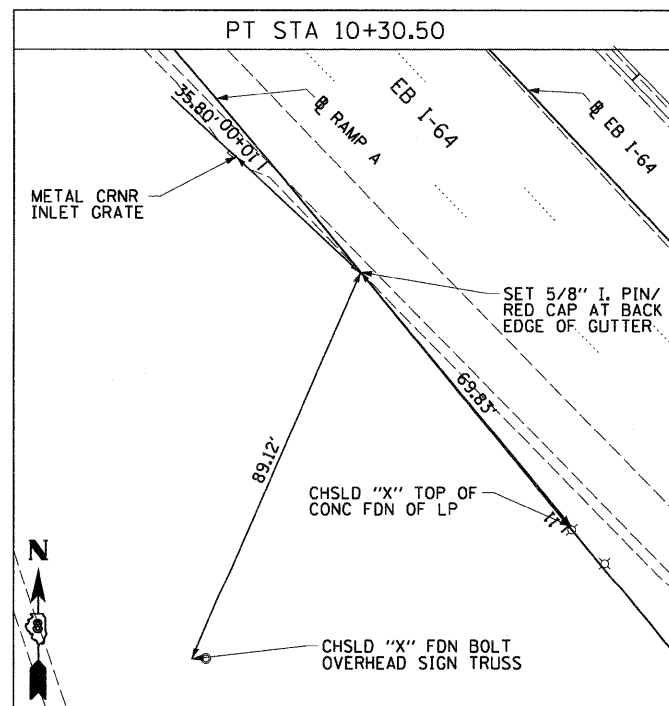
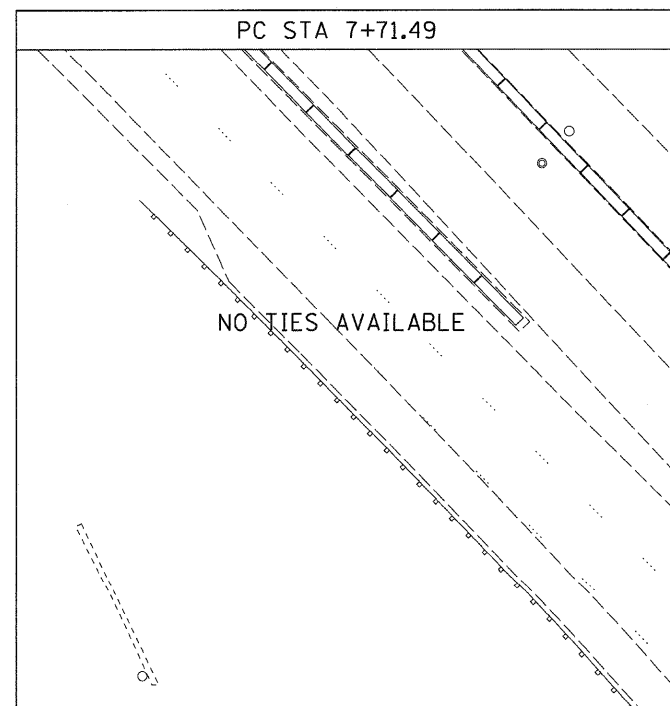


WB I-64



RAMP A



(CONTROL POINT MAY NEED TO BE RE-ESTABLISHED DUE TO CONSTRUCTION ACTIVITY)

(CONTROL POINT MAY NEED TO BE RE-ESTABLISHED DUE TO CONSTRUCTION ACTIVITY)

NOTE:
INFORMATION ON THIS SHEET
FROM CONTRACT 76C52

FILE NAME = DBTRI-76C52-sh-t-ATB-06.dgn	USER NAME = searsb	DESIGNED TTB	REVISED -	STATE OF ILLINOIS DEPARTMENT OF TRANSPORTATION	ALIGNMENT, TIES AND BENCHMARKS	F.A.I. RTE. 55/70	SECTION 82-1LS	COUNTY ST. CLAIR	TOTAL SHEETS 38	SHEET NO. 10
	PLOT SCALE = 40.0000' / in.	CHECKED JAH	REVISED -			CONTRACT NO. 76F37				
	PLOT DATE = 1/24/2012	DATE 1-20-12	REVISED -			ILLINOIS FED. AID PROJECT				
						SCALE: NONE SHEET NO. 6 OF 9 SHEETS STA. TO STA.				