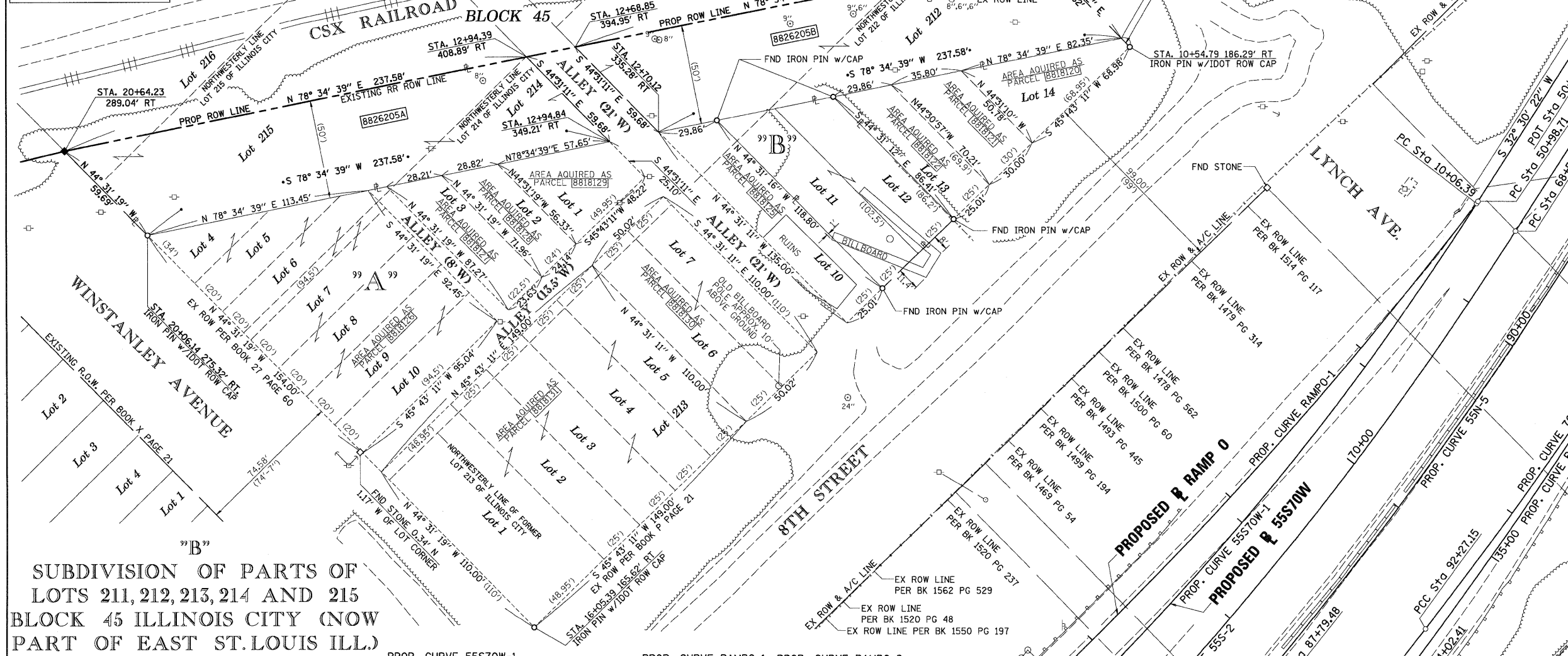


PART OF THE S 12 OF SECTION 7, T2N, R9W OF THE 3RD PM, ST. CLAIR COUNTY, ILLINOIS

PARCEL NO.	OWNER	TOTAL HOLDING		FEE SIMPLE ACQUISITION		REMAINDER		PERMANENT TAX NUMBER	PROPERTY ACQUIRED BY
		ACRES	ACRES	SO. FT.	ACRES	ACRES	ACRES		
8818120**	ST. CLAIR COUNTY AS TRUSTEE TITLE REPORT NO. SC-3447.0	1	0.0450	0.0450	1,962	0.00	02-07-0-316-002	BK 4049 PG 1613-1615 A01850605	
8818121**	ST. CLAIR COUNTY AS TRUSTEE TITLE REPORT NO. SC-3446.0	1	0.0417	0.0417	1,815	0.00	02-07-0-316-003	BK 4047 PG 1991-1993 A01849809	
8818122**	ST. CLAIR COUNTY AS TRUSTEE TITLE REPORT NO. SC-3445	1	0.0450	0.0450	1,959	0.00	02-07-0-316-004	BK 4047 PG 2000-2002 A01849812	
8818125**	BI-STATE TRUCK REPAIR INC. TITLE REPORT NO. SC-3442.0	1	0.0729	0.0729	3,174	0.00	02-07-0-316-007	BK 3997 PG 1501-1503 A01827858	
8818126**	BI-STATE TRUCK REPAIR, INC. TITLE REPORT NO. SC-3434.0, SC-3435.0, SC-3436.0, SC-3437.0, SC-3791.0, SC-3796.0	1	0.2688	0.2688	11,711	0.00	02-07-0-316-012 02-07-0-316-013 02-07-0-316-014 02-07-0-316-015 02-07-0-316-016 02-07-0-316-017 02-07-0-316-018	BK 4025 PG 1683-1686 A01839816	

\*\* PARCEL PREVIOUSLY ACQUIRED



"B"  
SUBDIVISION OF PARTS OF  
LOTS 211, 212, 213, 214 AND 215  
BLOCK 45 ILLINOIS CITY (NOW  
PART OF EAST ST. LOUIS ILL.)  
(PLAT BOOK P PAGE 21 RECORDED JULY 6th 1909)

STATION/OFFSETS REFERENCED TO RAMP 0			
STATION	OFFSET	NORTH	EAST
10+46.05	251.53' RT	14,043,037.3044	2,457,536.7490
20+64.23	289.04' RT	14,042,938.2134	2,457,046.3118

PROP. CURVE 55S70W-1  
PI STA. = 54+34.08  
Δ = 25° 36' 07" (RT)  
T = 335.37'  
L = 659.54'  
R = 1,476.00'  
C = 654.06'  
CB = S 45° 18' 26" W  
P.C. STA. = 50+98.71  
P.T. STA. = 57+58.25

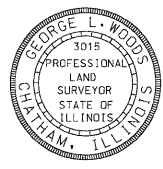
PROP. CURVE RAMPO-1  
PI STA. = 12+06.12  
Δ = 10° 27' 51" (RT)  
T = 199.73'  
L = 398.35'  
R = 2,181.17'  
C = 397.80'  
CB = S 42° 47' 12" W  
P.C. STA. = 10+06.39  
P.T. STA. = 14+04.74

PROP. CURVE RAMPO-2  
PI STA. = 16+69.30  
Δ = 74° 10' 12" (RT)  
T = 264.56'  
L = 453.08'  
R = 350.00'  
C = 422.10'  
CB = S 85° 06' 13" W  
P.C. STA. = 14+04.74  
P.T. STA. = 18+57.82

PARCEL NO.	OWNER	TOTAL HOLDING		FEE SIMPLE ACQUISITION		REMAINDER		PERMANENT TAX NUMBER	PROPERTY ACQUIRED BY
		ACRES	ACRES	SO. FT.	ACRES	ACRES	ACRES		
8818127**	BI-STATE TRUCK REPAIR INC. TITLE REPORT NO. SC-3438.0	1	0.0432	0.0432	1,881	0.00	02-07-0-316-011	BK 4027 PG 1990-1992 A01840759	
8818128**	LARRY SINN TITLE REPORT NO. SC-3439.0	1	0.0355	0.0355	1,548	0.00	02-07-0-316-010	BK 4014 PG 882-884 A01834977	
8818129**	ST. CLAIR COUNTY AS TRUSTEE TITLE REPORT NO. SC-3441.0 SC-3440.0	1	0.0451	0.0451	1,963	0.00	02-07-0-316-008 02-07-0-316-009	BK 4047 PG 2003-2005 A01849813	
8818130**	WILLIAM KARIUS TITLE REPORT NO. SC-3798.0, 3799.0	1	0.1263	0.1263	5,502	0.00	02-07-0-316-019 02-07-0-316-020	BK 4182 PG 2237-2239 A01910975	
8818131**	BI-STATE TRUCK REPAIR, INC. TITLE REPORT NO. SC-3797.0, SC-3800.0, SC-3801.0, SC-3802.0, SC-3803.0, SC-3804.0	1	0.3763	0.3763	16,390	0.00	02-07-0-316-021 02-07-0-316-022 02-07-0-316-023 02-07-0-316-024 02-07-0-316-025 02-07-0-316-026	BK 4014 PG 885-888 A01834978	
8826205	CENTRAL ILLINOIS PUBLIC SERVICE COMPANY d/b/a AMERENCIPI, AN ILLINOIS CORPORATION TITLE REPORT NO. SC-5450.0 BK 4172 PG 1491-1492; BK 4172 PG 1579	1	0.5455	0.5455	A 0.2727 B 11,882	0.00	02-07-0-316-001		

STATE OF ILLINOIS )  
                                  ) SS  
COUNTY OF SANGAMON )  
  
I, GEORGE L. WOODS, AN ILLINOIS PROFESSIONAL LAND SURVEYOR,  
STATE THAT I HAVE SURVEYED OR DIRECTED THE SURVEY OF THE PLAT  
OF HIGHWAY SHOWN HEREON AND THAT THIS PROFESSIONAL SERVICE CONFORMS  
TO THE CURRENT ILLINOIS MINIMUM STANDARDS FOR A BOUNDARY SURVEY FOR THE  
PROPOSED PARCELS) TO BE ACQUIRED BY THE STATE OF ILLINOIS, DEPARTMENT OF  
TRANSPORTATION, SHOWN HEREON.

DATED \_\_\_\_\_  
GEORGE L. WOODS, PLS NO. 3015  
LICENSE EXPIRATION DATE: 11/30/2010



\* SEE TOTAL HOLDING AREA  
SOURCE TABLE ON SHEET 2

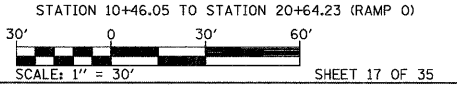
BASELINE COORDINATE TABLE RAMP 0			
STATION	NORTH	EAST	
PC 10+06.39	14,042,911.6111	2,457,757.7947	
PT 14+04.74	14,042,619.6717	2,457,487.5825	
PC 14+04.74	14,042,619.6717	2,457,487.5825	
PT 18+57.82	14,042,583.6435	2,457,067.0240	
PC 20+98.28	14,042,711.7383	2,456,863.5225	

BASELINE COORDINATE TABLE 55S70W			
STATION	NORTH	EAST	
POT 50+00.00	14,042,995.9442	2,457,811.5343	
PC 50+98.71	14,042,912.6955	2,457,758.4864	
PT 57+58.25	14,042,452.6904	2,457,293.5215	

**LINE ENGINEERING, LTD.**  
CONSULTING ENGINEERS  
210 WEST CHESTNUT  
CHATHAM, IL 62629  
PROFESSIONAL DESIGN FIRM NO. 184-001181  
PHONE: (217)-483-4168 FAX: (217)-483-4706

ILLINOIS DEPARTMENT OF TRANSPORTATION  
PLAT OF HIGHWAYS  
F.A.P. ROUTE 998  
SECTION 82-1-1HB  
ST. CLAIR COUNTY  
JOB NO. R-98-026-08



F.A.P. RTE.	SECTION	COUNTY	TOTAL SHEETS	SHEET NO.
998	82-1-1HB	ST. CLAIR	38	35

COMPLETION DATE OF FIELD WORK PERFORMED	
LAND SURVEY: OCT./2009	ROW STAKING: OCT./2009

STATIONING REFERENCED TO PROPOSED RAMP 0 UNLESS OTHERWISE NOTED PROPOSED 55S70W = (70WB)	
STATION 10+46.05 TO STATION 20+64.23 (RAMP 0)	