

CURVE DATA

CURVE CSXACRD-1
 PI STA= 9+36.50
 Δ= 41° 42' 56.12" (LT)
 D= 60° 18' 40.85"
 R= 95.00'
 T= 36.20'
 L= 69.17'
 E= 6.66'
 PC STA= 9+00.30
 PT STA= 9+69.47

CURVE BA-1
 PI STA= 2+62.00
 Δ= 30° 36' 29.39" (RT)
 D= 28° 38' 52.40"
 R= 200.00'
 T= 54.73
 L= 106.84'
 E= 7.35'
 PC STA= 2+07.28
 PT STA= 3+14.12

CURVE 55S70W-4
 PI STA= 81+39.12
 Δ= 26° 52' 21.21" (RT)
 D= 2° 00' 32.29"
 R= 2852.00'
 T= 681.35'
 L= 1337.63'
 E= 80.26'
 PC STA= 74+57.77
 PT STA= 87+95.40

CURVE CSXACRD-2
 PI STA= 11+00.73
 Δ= 19° 27' 44.07" (RT)
 D= 60° 18' 40.85"
 R= 95.00'
 T= 16.29'
 L= 32.27'
 E= 1.39'
 PRC STA= 10+84.44
 PT STA= 11+16.71

CURVE BA-2
 PI STA= 9+35.28
 Δ= 4° 15' 16.93" (RT)
 D= 11° 27' 32.96"
 R= 500.00'
 T= 18.57'
 L= 37.13'
 E= 0.34'
 PC STA= 9+16.71
 PT STA= 9+53.84

CURVE RAMPO-1
 PI STA= 12+06.12
 Δ= 10° 27' 50.50" (RT)
 D= 2° 37' 36.60"
 R= 2181.17'
 T= 199.73'
 L= 398.35'
 E= 9.13'
 S.E.= 1.5%
 S.E. TRANS. LENGTH= N/A
 PCC STA= 10+06.39
 PT STA= 14+04.74

CURVE BA-3
 PI STA= 16+69.07
 Δ= 5° 00' 00.00" (LT)
 D= 11° 27' 32.96"
 R= 500.00'
 T= 21.83'
 L= 43.63'
 E= 0.48'
 PC STA= 16+47.24
 PT STA= 16+90.87

CURVE RAMPO-2
 (COMPOUND CURVE W/ RAMPO-1)
 PI STA= 16+69.30
 Δ= 74° 10' 11.64" (RT)
 D= 16° 22' 12.80"
 R= 350.00'
 T= 264.56'
 L= 453.08'
 E= 88.74'
 S.E.= 8.0%
 S.E. TRANS. LENGTH= 168.00'
 PCC STA= 14+04.74
 PT STA= 18+57.82
 ATTAIN S.E.= STA. 12+92.18
 TO STA. 14+60.18
 REMOVE S.E.= NO REMOVAL-
 CONTINUOUSLY ROTATING PLANE
 TO CURVE RAMPO-3 ATTAINMENT
 STA. 17+89.22 TO STA. 21+43.90

CURVE BA-4
 PI STA= 17+96.97
 Δ= 59° 27' 40" (RT)
 D= 60° 18' 41"
 R= 95.00'
 T= 54.25'
 L= 98.59'
 E= 14.40'
 PC STA= 17+42.71
 PT STA= 18+41.30

CURVE RAMPO-3
 PI STA= 22+11.53
 Δ= 61° 19' 55.45" (LT)
 D= 29° 59' 52.05"
 R= 191.00'
 T= 113.25'
 L= 204.46'
 E= 31.05'
 S.E.= 6.0%
 S.E. TRANS. LENGTH= 116.76'
 PC STA= 20+98.28
 PT STA= 23+02.74
 ATTAIN S.E.= SEE CURVE RAMPO-2
 REMOVE S.E.= STA. 22+83.24
 TO STA. 24+00.00

CURVE 55S70W-1
 PI STA= 54+34.08
 Δ= 25° 36' 07.27" (RT)
 D= 3° 52' 54.58"
 R= 1476.00'
 T= 335.37'
 L= 659.54'
 E= 37.62'
 PC STA= 50+98.71
 PCC STA= 57+58.25

CURVE 55S70W-2
 PI STA= 60+50.80
 Δ= 14° 29' 28.84" (RT)
 D= 2° 29' 24.14"
 R= 2301.00'
 T= 292.55'
 L= 581.97'
 E= 18.52'
 PCC STA= 57+58.25
 PCC STA= 63+40.22

CURVE 55S70W-3
 PI STA= 67+79.76
 Δ= 36° 19' 13.31" (RT)
 D= 4° 16' 32.90"
 R= 1340.00'
 T= 439.54'
 L= 849.44'
 E= 70.25'
 PCC STA= 63+40.22
 PT STA= 71+89.66

CURVE I-55-1
 PI STA= 79+77.23
 Δ= 11° 19' 25.89" (LT)
 D= 3° 10' 59.16"
 R= 1800.00'
 T= 178.46'
 L= 355.75'
 E= 8.82'
 PC STA= 77+98.77
 PCC STA= 81+54.52

CURVE I-55-2
 PI STA= 84+69.85
 Δ= 18° 50' 46.04" (LT)
 D= 3° 00' 56.04"
 R= 1900.00'
 T= 315.33'
 L= 624.96'
 E= 25.99'
 PCC STA= 81+54.52
 PCC STA= 87+79.48

CURVE I-55-3
 PI STA= 89+19.86
 Δ= 7° 38' 56.09" (LT)
 D= 2° 43' 42.13"
 R= 2100.00'
 T= 140.38'
 L= 280.35'
 E= 4.69'
 PCC STA= 87+79.48
 PCC STA= 90+59.83

COORDINATE TABLES

BOWMAN YARD ACCESS ROAD

POINT	DESCRIPTION	STATION	NORTHING	EASTING
POT		0+00.00	14,042,652.55	2,456,568.10
PC	BA-1	2+07.28	14,042,795.55	2,456,718.14
PI	BA-1	2+62.00	14,042,833.31	2,456,757.76
PT	BA-1	3+14.12	14,042,845.64	2,456,811.08
PC	BA-2	9+16.71	14,042,981.34	2,457,398.20
PI	BA-2	9+35.28	14,042,985.52	2,457,416.29
PT	BA-2	9+53.84	14,042,988.35	2,457,434.65
PC	BA-3	16+47.24	14,043,093.96	2,458,119.96
PI	BA-3	16+69.07	14,043,097.28	2,458,141.53
PT	BA-3	16+90.87	14,043,102.47	2,458,162.74
PC	BA-4	17+42.71	14,043,114.80	2,458,213.09
PI	BA-4	17+96.97	14,043,127.71	2,458,265.79
PT	BA-4	18+41.30	14,043,088.88	2,458,303.68
POT		19+60.34	14,043,003.69	2,458,386.81

I-55 N

POINT	DESCRIPTION	STATION	NORTHING	EASTING
POT		65+3.69	14,041,670.46	2,455,641.15
PC	I-55-1	77+98.77	14,042,106.31	2,456,850.06
PI	I-55-1	79+77.23	14,042,166.83	2,457,017.93
PCC	I-55-1/I-55-2	81+54.52	14,042,259.14	2,457,170.66
PI	I-55-2	84+69.85	14,042,422.26	2,457,440.52
PCC	I-55-2/I-55-3	87+79.48	14,042,663.80	2,457,643.23
PI	I-55-3	89+19.86	14,042,771.33	2,457,733.48
PT	I-55-3	90+59.83	14,042,889.92	2,457,808.60
POT		97+00.00	14,043,430.70	2,458,151.21

I-55S/I-70W

POINT	DESCRIPTION	STATION	NORTHING	EASTING
POT		50+00.00	14,042,995.94	2,457,811.53
PC	55S70W-1	50+98.71	14,042,912.70	2,457,758.49
PI	55S70W-1	54+34.08	14,042,629.87	2,457,578.26
PCC	55S70W-1/55S70W-2	57+58.25	14,042,452.69	2,457,293.52
PI	55S70W-2	60+50.80	14,042,298.13	2,457,045.13
PCC	55S70W-2/55S70W-3	63+40.22	14,042,210.65	2,456,765.97
PI	55S70W-3	67+79.76	14,042,079.20	2,456,346.55
PT	55S70W-3	71+89.66	14,042,221.72	2,455,930.76
PC	55S70W-4	74+57.77	14,042,308.66	2,455,677.13
PI	55S70W-4	81+39.12	14,042,529.58	2,455,032.59
PT	55S70W-4	87+95.40	14,043,017.99	2,454,557.52

COORDINATE TABLES

EXCHANGE AVENUE

POINT	DESCRIPTION	STATION	NORTHING	EASTING
POT		10+00.00	14,042,766.16	2,456,456.52
POT		27+42.42	14,041,523.02	2,457,677.43

9TH STREET

POINT	DESCRIPTION	STATION	NORTHING	EASTING
POT		1+69.50	14,042,134.25	2,457,502.61
POT		6+30.50	14,041,691.72	2,457,053.50

7TH STREET

POINT	DESCRIPTION	STATION	NORTHING	EASTING
POT		10+00.00	14,042,206.67	2,456,114.58
POT		16+36.00	14,042,652.55	2,456,568.10

RAMP "O"

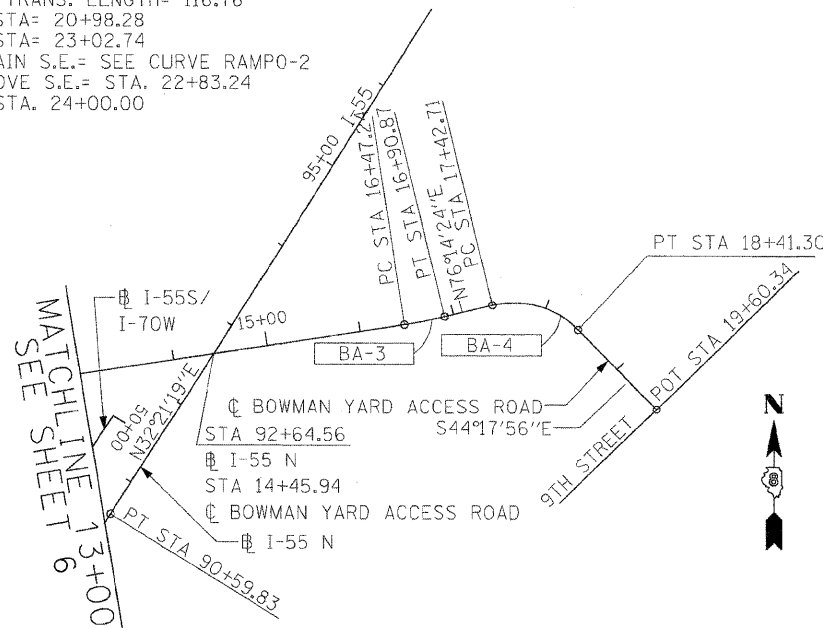
POINT	DESCRIPTION	STATION	NORTHING	EASTING
PCC	RAMPO-1	10+06.39	14,042,911.61	2,457,757.79
PI	RAMPO-1	12+06.12	14,042,753.27	2,457,636.06
PCC	RAMPO-1/RAMPO-2	14+04.74	14,042,619.67	2,457,487.58
PI	RAMPO-2	16+69.30	14,042,442.71	2,457,290.92
PT	RAMPO-2	18+57.82	14,042,583.64	2,457,067.02
PC	RAMPO-3	20+98.28	14,042,711.74	2,456,863.52
PI	RAMPO-3	22+11.53	14,042,772.07	2,456,767.68
PT	RAMPO-3	23+02.74	14,042,716.91	2,456,668.76
POT		24+23.97	14,042,657.87	2,456,562.87

CSX ACCESS ROAD

POINT	DESCRIPTION	STATION	NORTHING	EASTING
POT		7+59.00	14,042,348.30	2,455,537.46
PC	CSXACRD-1	9+00.30	14,042,355.32	2,455,678.58
PI	CSXACRD-1	9+36.50	14,042,357.11	2,455,714.73
PT	CSXACRD-1	9+69.47	14,042,382.51	2,455,740.53
PC	CSXACRD-2	10+84.44	14,042,463.18	2,455,822.44
PI	CSXACRD-2	11+00.73	14,042,474.61	2,455,834.05
PT	CSXACRD-2	11+16.71	14,042,481.52	2,455,848.80
POT		17+87.78	14,042,766.16	2,456,456.52

CSX ACCESS ROAD SPUR

POINT	DESCRIPTION	STATION	NORTHING	EASTING
POT		0+00.00	14,042,533.38	2,455,959.53
POT		3+41.68	14,042,289.32	2,456,198.64



NOTE:
 INFORMATION ON THIS SHEET FROM CONTRACT 76C55

**STATE OF ILLINOIS
 DEPARTMENT OF TRANSPORTATION**

ALIGNMENTS, TIES, AND BENCHMARKS

FILE NAME =	USER NAME = \$USER\$	DESIGNED - RRV	REVISED -	F.A.P. RTE. 9153	SECTION 82-1LS-1	COUNTY ST. CLAIR	TOTAL SHEETS 37	SHEET NO. 7
\$FILE\$		DRAWN - KNW	REVISED -	SCALE: 1"=100'		SHEET NO. 2 OF 5 SHEETS		STA. TO STA.
		CHECKED - DRH	REVISED -	FED. ROAD DIST. NO. [ILLINOIS]		FED. AID PROJECT		CONTRACT NO. 76F40
		PLOT SCALE = \$SCALE\$	REVISED -					
		PLOT DATE = \$DATE\$	REVISED -					
		DATE - DECEMBER 18, 2009	REVISED -					