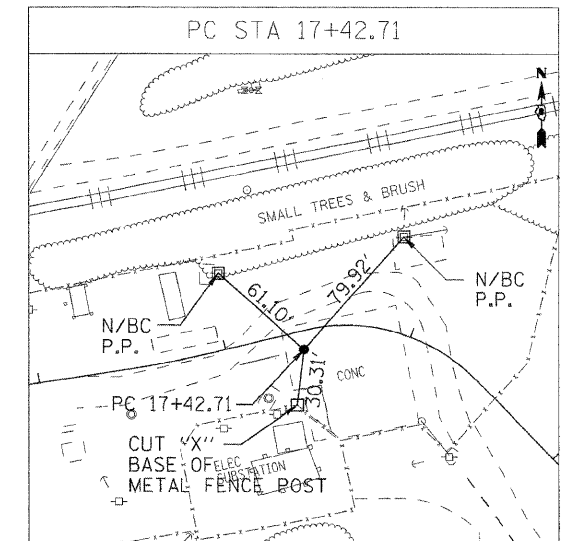
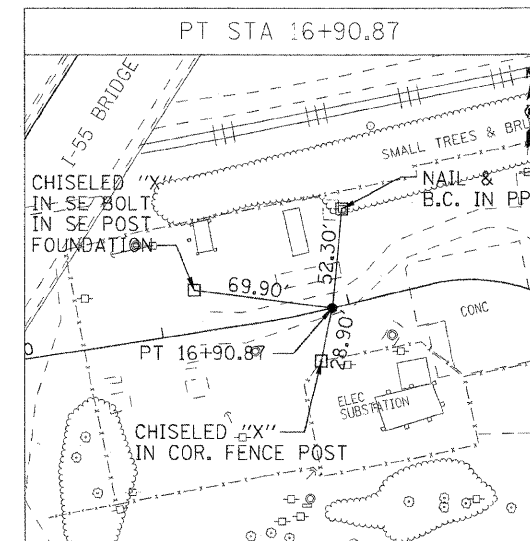
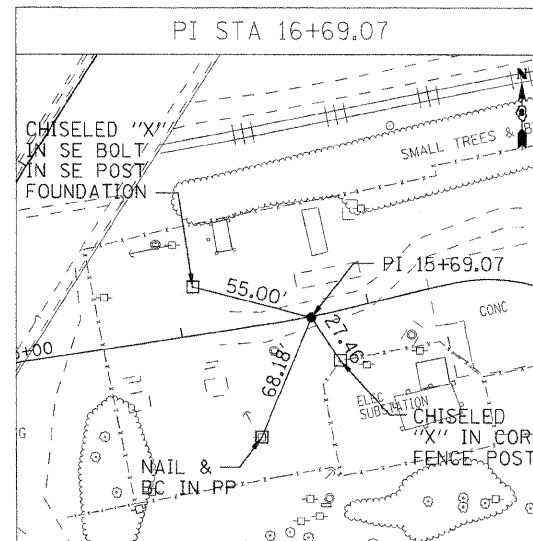
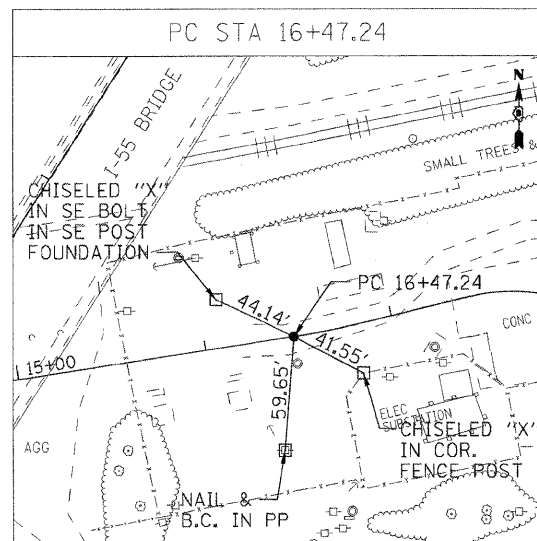
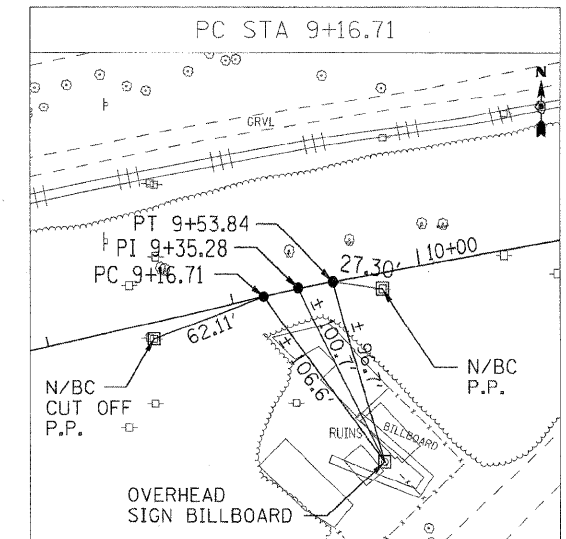
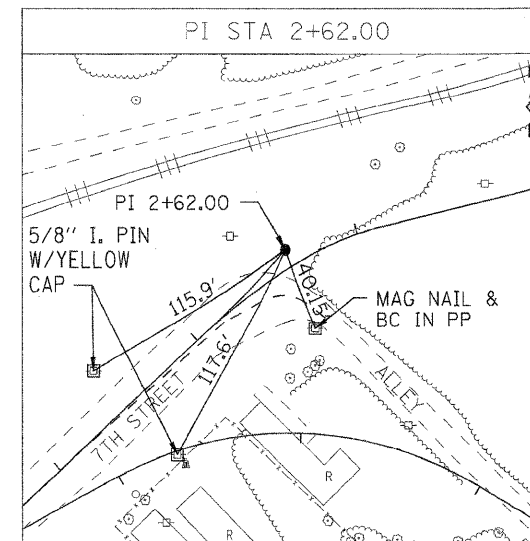
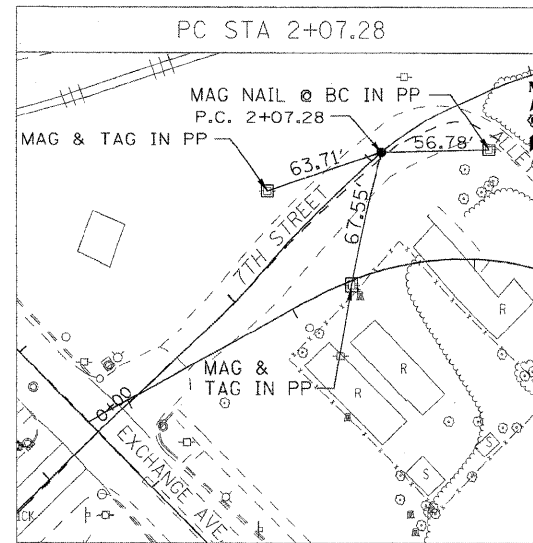


BOWMAN YARD ACCESS ROAD CENTERLINE



NOTE:
INFORMATION ON THIS SHEET FROM CONTRACT 76C55

STATE OF ILLINOIS
DEPARTMENT OF TRANSPORTATION

ALIGNMENTS, TIES, AND BENCHMARKS

FILE NAME =	USER NAME = #USER#	DESIGNED - RRV	REVISED -	SCALE: 1"=50' SHEET NO. 4 OF 5 SHEETS STA. TO STA.	F.A.P. RTE. 9153	SECTION 82-1LS-1	COUNTY ST. CLAIR	TOTAL SHEETS 37	SHEET NO. 9
*FILE#		DRAWN - AGF	REVISED -		FED. ROAD DIST. NO.	ILLINOIS	FED. AID PROJECT	CONTRACT NO. 76F40	
	PLOT SCALE = #SCALE#	CHECKED - DRH	REVISED -						
	PLOT DATE = #DATE#	DATE - DECEMBER 18, 2009	REVISED -						

#DATE#
#TIME#
#FILE#