

"A"  
 FISCHER SCHEIN CO'S SUBD  
 OF LOTS 33 & 34 AND PARTS  
 OF LOTS 35, 39, & 40 OF BLOCK 17  
 ILLINOIS CITY EAST ST. LOUIS ILLS.

PLAT BOOK P PAGE 56  
 RECORDED 27th JULY 1910

"B"  
 ILLINOIS CITY  
 PLAT BOOK E PAGE 301 & 302  
 RECORDED JULY 2nd 1825

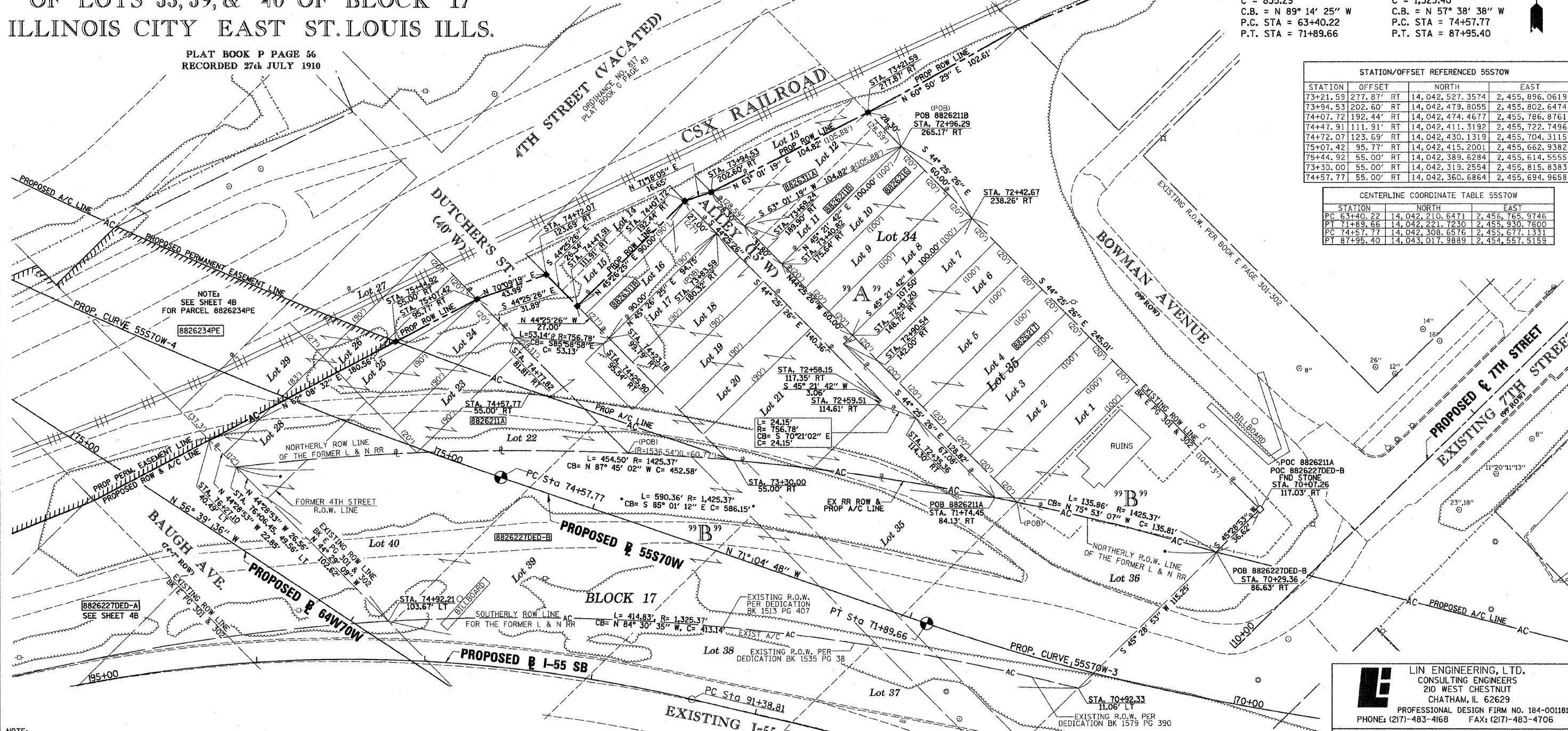
PROP. CURVE 55S70W-3  
 PI STA. = 67+79.76  
 $\Delta = 36^\circ 19' 13''$  (RT)  
 T = 439.54'  
 L = 849.44'  
 R = 1,340.00'  
 C = 835.29'  
 C.B. = N 89° 14' 25" W  
 P.C. STA = 63+40.22  
 P.T. STA = 71+89.66

PROP. CURVE 55S70W-4  
 PI STA. = 81+39.12  
 $\Delta = 26^\circ 52' 21''$  (RT)  
 T = 681.35'  
 L = 1,337.63'  
 R = 2,852.00'  
 C = 1,325.40'  
 C.B. = N 57° 38' 38" W  
 P.C. STA = 74+57.77  
 P.T. STA = 87+95.40



STATION/OFFSET REFERENCED 55S70W			
STATION	OFFSET	NORTH	EAST
73+21.59	277.87' RT	14,042,527.3574	2,455,896.0619
73+94.53	202.60' RT	14,042,479.8055	2,455,802.6474
74+07.72	192.44' RT	14,042,474.4677	2,455,786.8761
74+47.91	111.91' RT	14,042,411.3192	2,455,722.7496
74+72.07	123.69' RT	14,042,430.1319	2,455,704.3115
75+07.42	95.77' RT	14,042,415.2001	2,455,662.9382
75+44.92	55.00' RT	14,042,389.6284	2,455,614.5555
73+30.00	55.00' RT	14,042,319.2554	2,455,815.8383
74+57.77	55.00' RT	14,042,360.6864	2,455,694.9658

CENTERLINE COORDINATE TABLE 55S70W			
STATION	NORTH	EAST	STATION
PC 63+40.22	14,042,210.6471	2,456,765.9746	
PT 71+89.66	14,042,221.7230	2,455,930.7600	
PC 74+57.77	14,042,308.6576	2,455,677.1331	
PT 87+95.40	14,043,017.9889	2,454,557.5159	

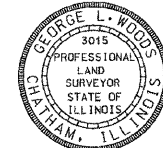


NOTE:  
 SEE SHEET 4B FOR PARCELS 8826227DED-A  
 & 8826227DED-B PARCEL TABLE INFORMATION

PARCEL NO.	OWNER	TOTAL HOLDING ACRES	FEE SIMPLE ACQUISITION		REMAINDER ACRES	PERMANENT TAX NUMBER	PROPERTY ACQUIRED BY
			GROSS ACRES	SO. FT.			
8826211	CSX TRANSPORTATION, INC. TITLE REPORT NO. SC-5633.3, SC-5456.0 & SC-5438.0 TITLE REPORT NO. BK 2542 PG 2128-2130, BK 2508 PG 662, BK 2509 PG 2300, BK 2509 PG 2347, BK 1055 PG 187	0.7466	A=0.7101 B=0.0365	A=30,934 B=1,590		02-07.0-306-017 02-07.0-306-018 02-07.0-306-019 02-07.0-306-020 02-07.0-306-021 02-07.0-306-022 02-07.0-306-023 02-07.0-306-024 02-07.0-500-004(p1)	
8826216	MID AMERICA REAL ESTATE & DEVELOPMENT, INC. TITLE REPORT NO. SC-5461.0 BOOK 3625 PAGE 1907 & BOOK 3320 PAGE 1474	0.1377	0.1377	6,000	0.0000	02-07.0-306-037	
8826217	ARROW REALTY, INC. TITLE REPORT NO. SC-5462.0 BOOK 3324 PAGE 951	0.5066	0.5066	22,070	0.0000	02-07.0-306-038	
8826311	CITY OF EAST ST. LOUIS, ST. CLAIR COUNTY, ILLINOIS TITLE REPORT NO. SC-5425.0, BOOK 1054 PAGE 296	0.1208	A=0.0650 B=0.0558	A=2,830 B=2,430	0.0000	NONE	

\* SEE TOTAL HOLDING AREA  
 SOURCE TABLE ON SHEET 2

STATE OF ILLINOIS )  
 ) SS  
 COUNTY OF )  
 I, GEORGE L. WOODS, AN ILLINOIS PROFESSIONAL LAND SURVEYOR,  
 STATE THAT I HAVE SURVEYED OR DIRECTED THE SURVEY OF THE PLAT  
 OF HIGHWAY SHOWN HEREON AND THAT THIS PROFESSIONAL SERVICE CONFORMS  
 TO THE CURRENT ILLINOIS MINIMUM STANDARDS FOR A BOUNDARY SURVEY FOR THE  
 PROPOSED PARCEL(S) TO BE ACQUIRED BY THE STATE OF ILLINOIS, DEPARTMENT OF  
 TRANSPORTATION, SHOWN HEREON.



DATED \_\_\_\_\_  
 GEORGE L. WOODS, PLS NO. 3015  
 LICENSE EXPIRATION DATE: 11/30/2010

SPACE RESERVED FOR RECORDING OFFICER

**LE** LIN ENGINEERING, LTD.  
 CONSULTING ENGINEERS  
 210 WEST CHESTNUT  
 CHATHAM, IL 62629  
 PROFESSIONAL DESIGN FIRM NO. 184-001181  
 PHONE: (217)-483-4168 FAX: (217)-483-4706

ILLINOIS DEPARTMENT OF TRANSPORTATION  
 PLAT OF HIGHWAYS  
 FAP ROUTE 998  
 SECTION N/A  
 ST. CLAIR COUNTY  
 JOB NO. R-98-026-08

STATION 70+00 TO STATION 76+00 (I-70 WB CONNECTOR)  
 SCALE: 1" = 30'

F.A.U. RTE.	SECTION	COUNTY	TOTAL SHEETS	SHEET NO.
9153	82-1S-1	ST. CLAIR	37	30

CONTRACT NO. 76F40

STATIONING SHOWN HEREON REFERENCED TO:  
 55S70W = (70 WB)  
 COMPLETION DATE OF FIELD WORK PERFORMED \_\_\_\_\_  
 LAND SURVEY: \_\_\_\_\_ ROW STAKING: \_\_\_\_\_

DATE: 7/29/08  
 FILE NAME: 8826227DED-A  
 PLOT SCALE: 1"=30'  
 USER NAME: MUSER