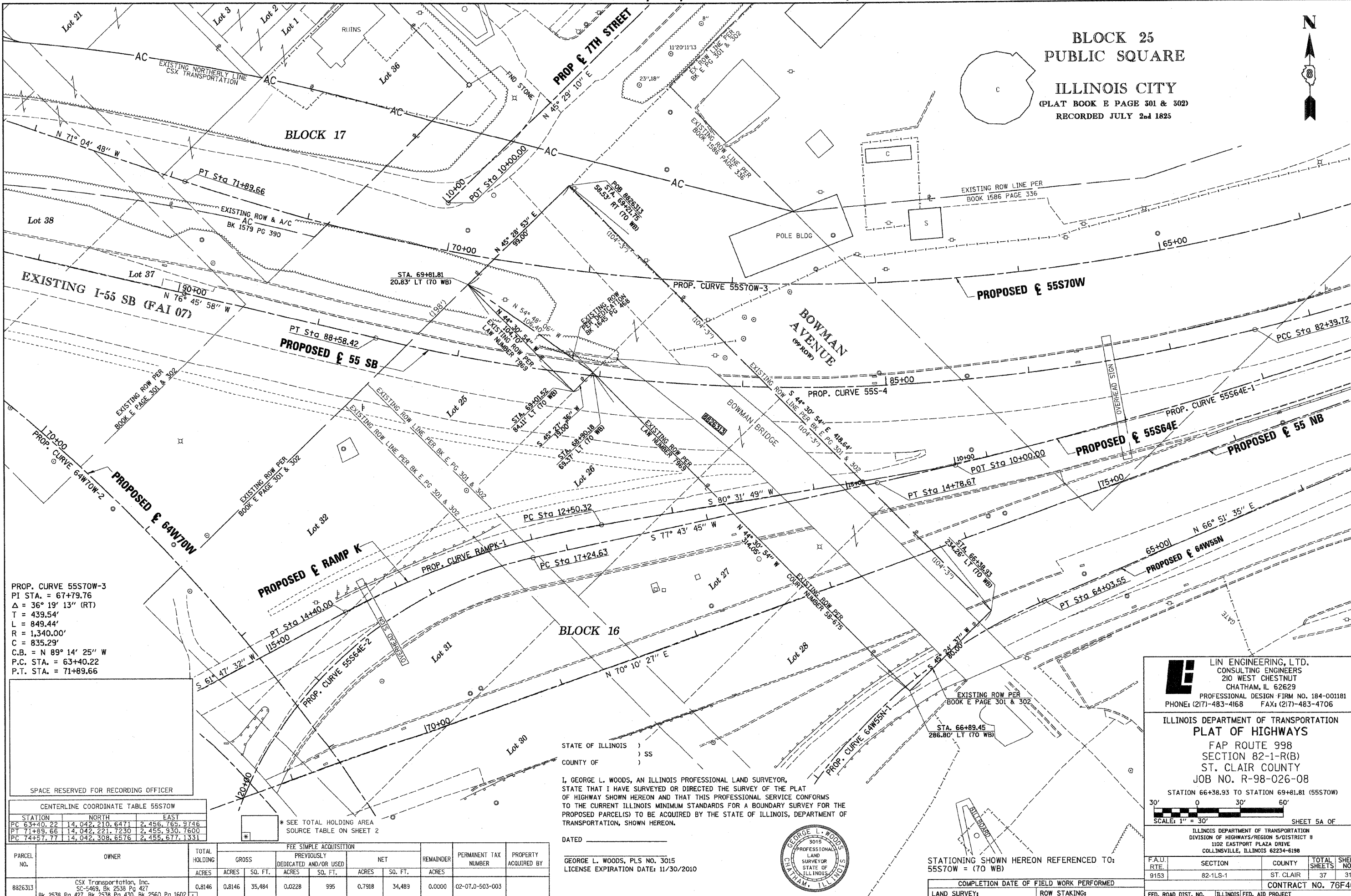


PART OF THE SW 1/4 OF SECTION 7, T2N, R9W OF THE 3RD PM, ST. CLAIR COUNTY, ILLINOIS

BLOCK 25  
PUBLIC SQUARE  
ILLINOIS CITY  
(PLAT BOOK E PAGE 301 & 302)  
RECORDED JULY 2nd 1825



PROP. CURVE 55STOW-3  
PI STA. = 67+79.76  
Δ = 36° 19' 13" (RT)  
T = 439.54'  
L = 849.44'  
R = 1,340.00'  
C = 835.29'  
C.B. = N 89° 14' 25" W  
P.C. STA. = 63+40.22  
P.T. STA. = 71+89.66

SPACE RESERVED FOR RECORDING OFFICER

CENTERLINE COORDINATE TABLE 55STOW

STATION	NORTH	EAST
PC 63+40.22	14,042.210, 6471	2,456,765.9746
PT 71+89.66	14,042.221, 7230	2,455,930.7600
PC 74+57.77	14,042.308, 6576	2,455,677.1331

\* SEE TOTAL HOLDING AREA SOURCE TABLE ON SHEET 2

PARCEL NO.	OWNER	TOTAL HOLDING ACRES	FEE SIMPLE ACQUISITION				PERMANENT TAX NUMBER	PROPERTY ACQUIRED BY
			GROSS ACRES	PREVIOUSLY DEDICATED AND/OR USED ACRES	NET ACRES	REMAINDER ACRES		
8826313	CSX Transportation, Inc. SC-5469, Bk 2538 Pg 427 Bk 2538 Pg 430, Bk 2560 Pg 1602	0.8146	0.8146	0.0228	0.7918	02-07.0-503-003		

STATE OF ILLINOIS )  
COUNTY OF ) SS )  
I, GEORGE L. WOODS, AN ILLINOIS PROFESSIONAL LAND SURVEYOR, STATE THAT I HAVE SURVEYED OR DIRECTED THE SURVEY OF THE PLAT OF HIGHWAY SHOWN HEREON AND THAT THIS PROFESSIONAL SERVICE CONFORMS TO THE CURRENT ILLINOIS MINIMUM STANDARDS FOR A BOUNDARY SURVEY FOR THE PROPOSED PARCEL(S) TO BE ACQUIRED BY THE STATE OF ILLINOIS, DEPARTMENT OF TRANSPORTATION, SHOWN HEREON.



STATIONING SHOWN HEREON REFERENCED TO:  
55STOW = (70 WB)

**Lin Engineering, Ltd.**  
CONSULTING ENGINEERS  
210 WEST CHESTNUT  
CHATHAM, IL 62629  
PROFESSIONAL DESIGN FIRM NO. 184-001181  
PHONE: (217)-483-4168 FAX: (217)-483-4706

ILLINOIS DEPARTMENT OF TRANSPORTATION  
PLAT OF HIGHWAYS  
FAP ROUTE 998  
SECTION 82-1-R(B)  
ST. CLAIR COUNTY  
JOB NO. R-98-026-08  
STATION 66+38.93 TO STATION 69+81.81 (55STOW)

SCALE: 1" = 30'

FA.U. RTE.	SECTION	COUNTY	TOTAL SHEETS	SHEET NO.
9153	82-1LS-1	ST. CLAIR	37	31

COMPLETION DATE OF FIELD WORK PERFORMED

LAND SURVEY:	ROW STAKING:

CONTRACT NO. 76F40  
FED. ROAD DIST. NO. ILLINOIS FED. AID PROJECT

PLOT DATE = 7/28/2009  
FILE NAME = 815116  
PLOT SCALE = AS SCALE  
USER NAME = ALISBRN