

F.A.P. RTE.	SECTION	COUNTY	TOTAL SHEETS	SHEET NO.
VAR. DIST 8 BRIDGE DECK 2012-3	ILLINOIS	CLINTON	30	1
CONTRACT NO. 76F50				

STATE OF ILLINOIS
DEPARTMENT OF TRANSPORTATION
DIVISION OF HIGHWAYS

**PROPOSED
HIGHWAY PLANS**

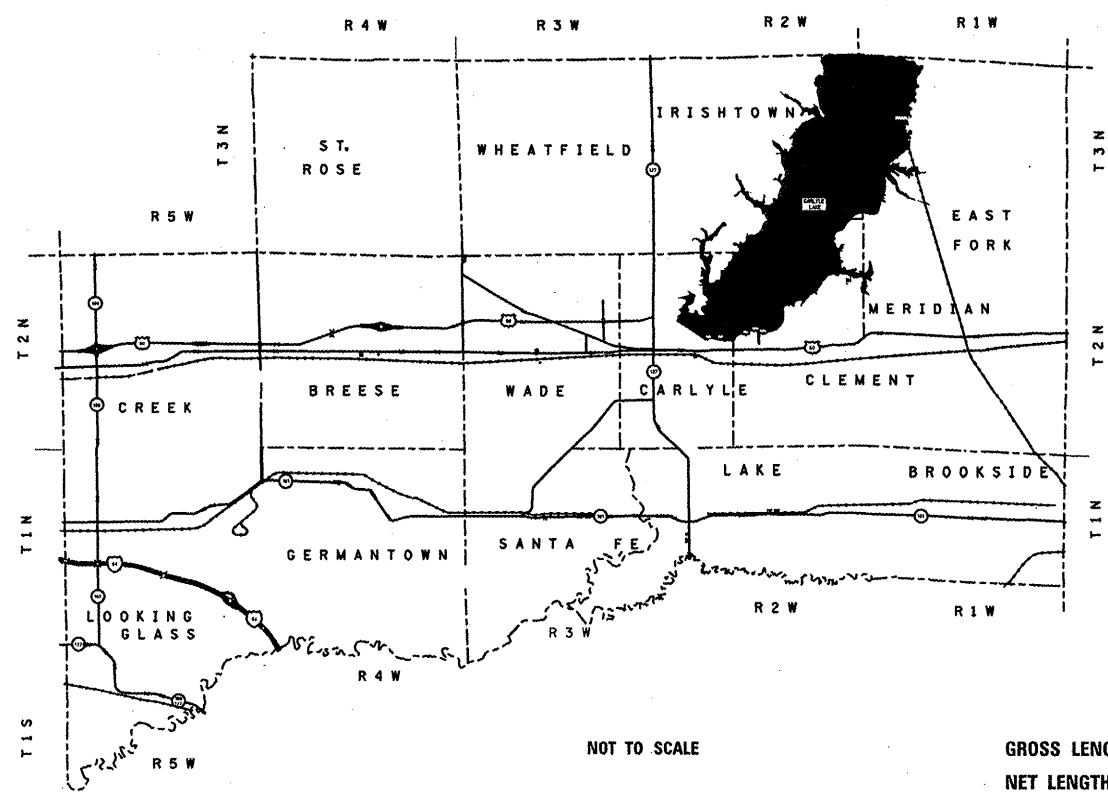
VARIOUS ROUTES
SECTION DIST 8 BRIDGE DECK 2012-3
BRIDGE DECK SEALING
CLINTON COUNTY

C-98-044-12

FOR INDEX OF SHEETS, SEE SHEET NO. 3

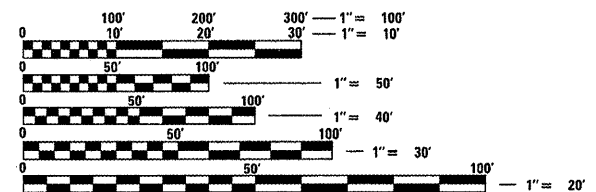


SEE SHEET 2 FOR LOCATION MAP



NOT TO SCALE

GROSS LENGTH = 9359.61 FT. = 1.773 MILES
NET LENGTH = 9359.61 FT. = 1.773 MILES



FULL SIZE PLANS HAVE BEEN PREPARED USING STANDARD ENGINEERING SCALES. REDUCED SIZED PLANS WILL NOT CONFORM TO STANDARD SCALES. IN MAKING MEASUREMENTS ON REDUCED PLANS, THE ABOVE SCALES MAY BE USED.

J.U.L.I.E.
JOINT UTILITY LOCATION INFORMATION FOR EXCAVATION
1-800-892-0123
OR 811

PROJECT ENGINEER PATTI LEBEAU 618-346-3179
PROJECT MANAGER HERVE GELIN 618-346-3323

CONTRACT NO. 76F50

FOR LATITUDE & LONGITUDE, SEE SHEET NO. 3

STATE OF ILLINOIS
DEPARTMENT OF TRANSPORTATION
DIVISION OF HIGHWAYS

SUBMITTED March 27 20 12

[Signature]
DEPUTY DIRECTOR OF HIGHWAYS, REGION 5 ENGINEER

May 25 20 12
John D. Baranzelli, P.E.
ENGINEER OF DESIGN AND ENVIRONMENT

May 25 20 12
William R. Frey
DIRECTOR OF HIGHWAYS, CHIEF ENGINEER

PRINTED BY THE AUTHORITY
OF THE STATE OF ILLINOIS