

FOR INDEX OF SHEETS AND STANDARDS SEE SHEET NO. 2 AND 3

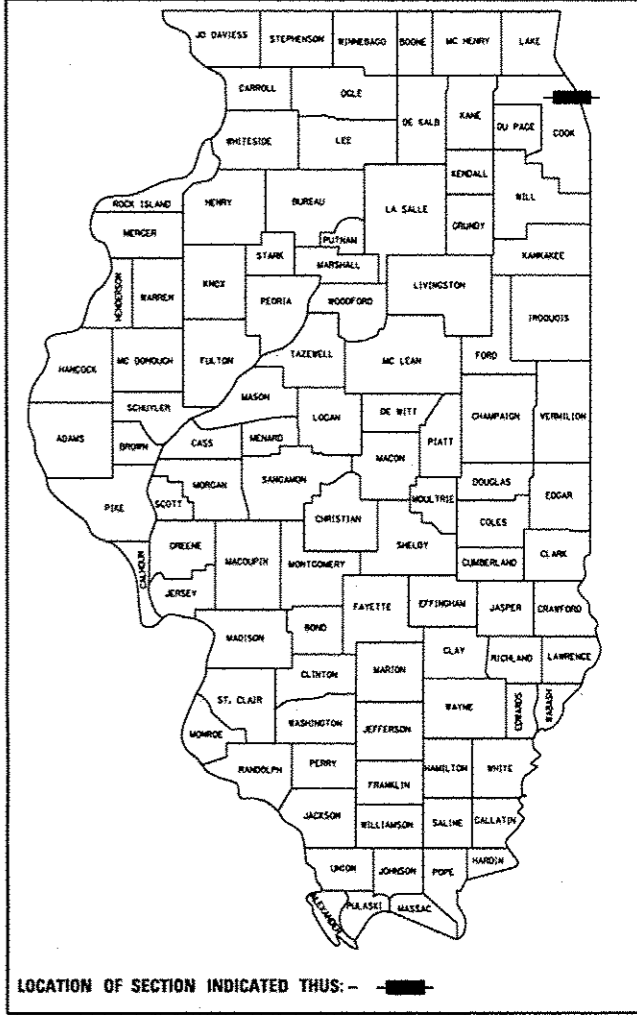
STATE OF ILLINOIS
DEPARTMENT OF TRANSPORTATION
DIVISION OF HIGHWAYS
**PROPOSED
HIGHWAY PLANS**

*854-12
+34=876

F.A.I. RTE. 90/94/290	SECTION 2013-010R	COUNTY COOK	TOTAL SHEETS 171	SHEET NO. 1
ILLINOIS			CONTRACT NO. 60W28	

PROJECT LOCATED IN CITY OF CHICAGO

D-91-227-13



FAI ROUTE 90/94/290 (I-90/94/290)
AT I-290 CONGRESS PARKWAY
(CIRCLE INTERCHANGE) — FLYOVER
N TO W I-290
SECTION 2013-010R
BRIDGE CONSTRUCTION,
ROADWAY RECONSTRUCTION,
BRIDGE REMOVAL AND LIGHTING
PROJECT: ACNHPP-0005 (990)
COOK COUNTY
C-91-230-13

NPDES PERMIT INFORMATION	
Area =	7.56 Acres
Approximate Location of Roadway is:	
Longitude	87° 38' 44.95" W
Latitude	41° 52' 32.06" N

DESIGN DESIGNATIONS:	POSTED /DESIGN SPEEDS:
HALSTED STREET 23,000(2040) MINOR ARTERIAL (URBAN)	30 /30 MPH
HARRISON STREET 17,000(2040) COLLECTOR (URBAN)	25 /25 MPH
PEORIA STREET 0(2040) PEDESTRIAN BRIDGE	N/A MPH
SB I-90/94 98,000(2040) INTERSTATE	45 /60 MPH
NB I-90/94 81,000(2040) INTERSTATE	45 /60 MPH
WB I-290 31,000(2040) INTERSTATE	45 /50 MPH
EB I-290 33,000(2040) INTERSTATE	45 /50 MPH
ES RAMP 44,000(2040) INTERSTATE RAMP	40 /40 MPH
NW RAMP 36,000(2040) INTERSTATE RAMP	35 /35 MPH
SW RAMP 23,000(2040) INTERSTATE RAMP	35 /35 MPH
EN RAMP 31,000(2040) INTERSTATE RAMP	30 /30 MPH
NE RAMP 4,000(2040) INTERSTATE RAMP	30 /30 MPH
WS RAMP 8,000(2040) INTERSTATE RAMP	25 /25 MPH
SE RAMP 5,000(2040) INTERSTATE RAMP	25 /25 MPH
NB TAYLOR ENTRANCE 11,000(2040) INTERSTATE RAMP	30 /30 MPH
NB ROOSEVELT ENTRANCE 6,000(2040) INTERSTATE RAMP	30 /30 MPH



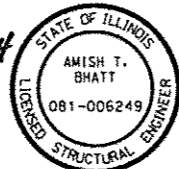
Danny B. Manojlovski 3/28/2014
DANNY B. MANOJLOVSKI DATE
LICENSE EXPIRES 11/30/2015
SHEET RANGE



Kevin C. Fuhr 3/28/14
KEVIN C. FUHR DATE
LICENSE EXPIRES 11/30/2015
SHEET RANGE



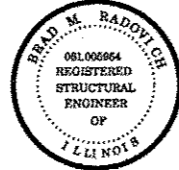
William D. Stermer 3/28/2014
WILLIAM D. STERMER DATE
LICENSE EXPIRES 11/30/2015
SHEET RANGE



Amish T. Bhatt 3/28/14
AMISH T. BHATT DATE
LICENSE EXPIRES 11/30/2014
SHEET RANGE



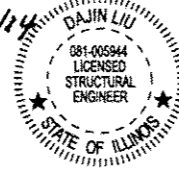
Chad R. Luciani 3/28/14
CHAD R. LUCIANI DATE
LICENSE EXPIRES 11/30/2015
SHEET RANGE



Brad M. Radovich 3/28/2014
BRAD M. RADOVICH DATE
LICENSE EXPIRES 11/30/2014
SHEET RANGE

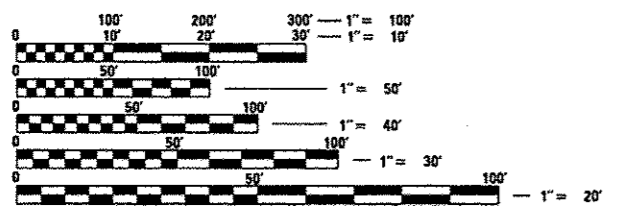


Edward E. Younis 3/28/14
EDWARD E. YOUNIS DATE
LICENSE EXPIRES 11/30/2015
SHEET RANGE



Dajin Liu 3/28/14
DAJIN LIU DATE
LICENSE EXPIRES 11/30/2014
SHEET RANGE

Design Designation - 35,375(40) Interstate 22.25 (PCC-20)



FULL SIZE PLANS HAVE BEEN PREPARED USING STANDARD ENGINEERING SCALES. REDUCED SIZED PLANS WILL NOT CONFORM TO STANDARD SCALES. IN MAKING MEASUREMENTS ON REDUCED PLANS, THE ABOVE SCALES MAY BE USED.

C.U.A.N.
CHICAGO UTILITY ALERT NETWORK
1-312-744-7000

PROJECT ENGINEER: LISA CHRZASC
PROJECT MANAGER: BRIAN KUTTAB

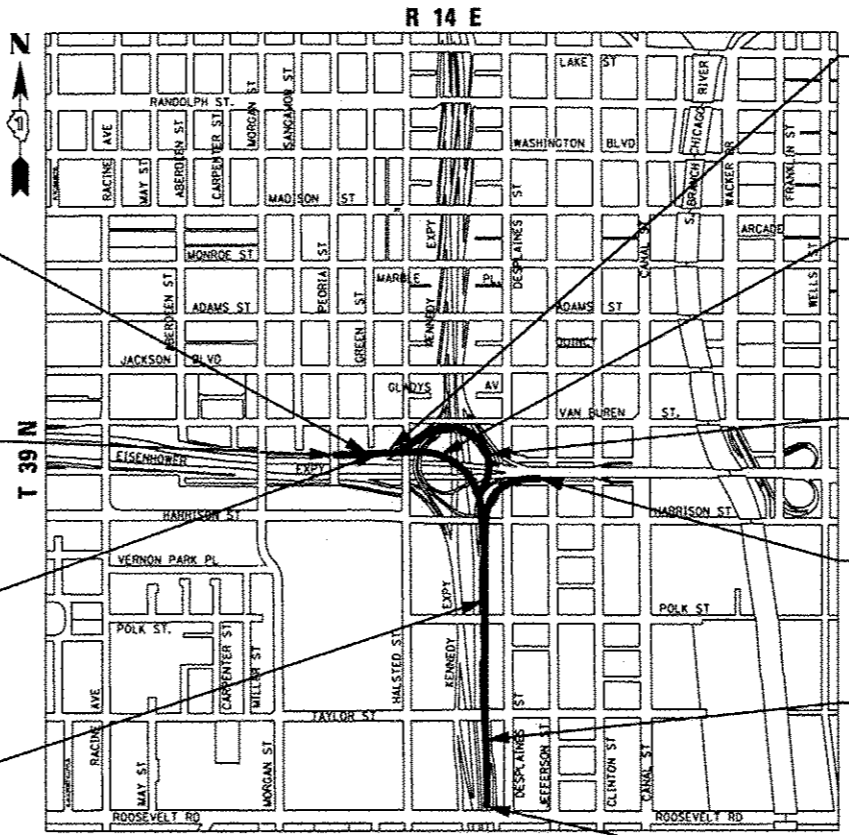
CONTRACT NO. 60W28

RETAINING WALL 3
SN 016-1722
STA 1838 + 15.67 TO
STA 1841 + 50.00

END PROJECT
LIMIT
STA 1842 + 02.61

RETAINING WALL 4
SN 016-1723
STA 1838 + 23.17 TO
STA 1841 + 26.23

RETAINING WALL 1
SN 016-1720
STA 1813 + 60.00 TO
STA 1818 + 53.67 (WEST WALL)
STA 1816 + 00.00 TO
STA 1818 + 46.17 (EAST WALL)



RETAINING WALL 40
SN 016-1809
STA 1322 + 49.13 TO
STA 1325 + 11.44

RAMP NW FLYOVER
SN 016-1705
STA 1818 + 45.67 TO
STA 1838 + 23.67

RAMP NW
DEMOLITION
SN 016-2449

RAMP NE
DEMOLITION
SN 016-2451

RETAINING WALL 2
SN 016-2024
STA 1808 + 66.41 TO
STA 1824 + 66.01

BEGIN PROJECT
LIMIT
STA. 1806 + 40.00

GROSS LENGTH = 3562.61 FT. (0.675 MILES)
NET LENGTH = 3562.61 FT. (0.675 MILES)



STATE OF ILLINOIS
DEPARTMENT OF TRANSPORTATION
DIVISION OF HIGHWAYS
SUBMITTED *Mosleh 20 14*
John D. Baranzelli, PE, PE
DEPUTY DIRECTOR OF HIGHWAYS, REGION ENGINEER
May 9 20 14
John D. Baranzelli, PE, PE
ENGINEER OF DESIGN AND ENVIRONMENT
May 9 20 14
Omer Osman, PE, PE
DIRECTOR OF HIGHWAYS, CHIEF ENGINEER

PRINTED BY THE AUTHORITY
OF THE STATE OF ILLINOIS

DISTRICT 1 DESIGN /CONSULTANT SERVICES: BRIAN KUTTAB, P.E. (847)705-4431 SCHAUMBURG, ILLINOIS