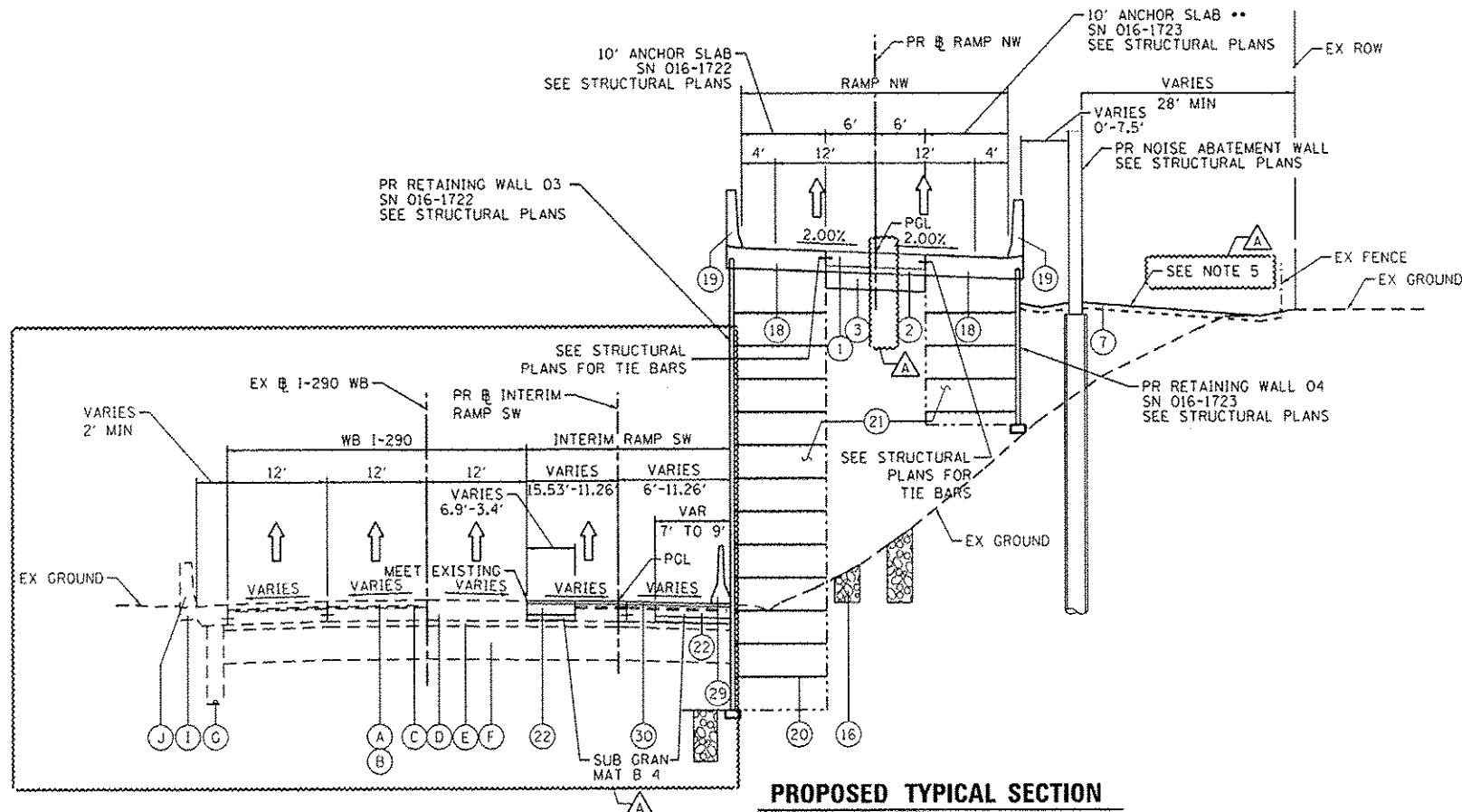


**11 EXISTING TYPICAL SECTION
RAMP NW**

STA 1837+88.60 TO STA 1838+98.00



**PROPOSED TYPICAL SECTION
RAMP NW**

STA 1837+88.60 TO STA 1838+98.00

• SEE NOTE 4
 ** ANCHOR SLAB ENDS AT STA 1839+00.00
 BRIDGE APPROACH PAVEMENT STA 1838+23.17 TO STA 1838+53.17
 BRIDGE APPROACH PAVEMENT CONNECTOR STA 1838+53.17 TO STA 1839+53.17
 RW 3 SN 016-1722 STA 1838+15.67 TO STA 1841+78.17
 RW 4 SN 016-1723 STA 1838+23.17 TO STA 1841+26.23

EXISTING

- (A) POLYMERIZED HOT-MIX ASPHALT SURFACE COURSE, STONE MATRIX ASPHALT, N80, 2"
- (B) POLYMERIZED HOT-MIX ASPHALT BINDER COURSE, STONE MATRIX ASPHALT, N80, 2"
- (C) BITUMINOUS CONCRETE SURFACE COURSE, CLASS I MIXTURE E, 1 1/2"
- (D) PORTLAND CEMENT CONCRETE BASE COURSE, 9 1/4"
- (E) STABILIZED SUBBASE, 4"
- (F) POROUS GRANULAR EMBANKMENT, 24"
- (G) PIPE UNDERDRAIN, 6"
- (H) BITUMINOUS SHOULDER, 10"
- (I) PORTLAND CEMENT CONCRETE SHOULDER, 9"
- (J) CONCRETE BARRIER
- (K) COMBINATION CONCRETE CURB & GUTTER TYPE M-6.24

PROPOSED

- (1) PORTLAND CEMENT CONCRETE PAVEMENT 10 1/2" (JOINTED)
- (2) STABILIZED SUBBASE-HOT MIX ASPHALT, 4"
- (3) AGGREGATE SUBGRADE IMPROVEMENT 12"
- (4) PORTLAND CEMENT CONCRETE SHOULDERS 10 1/2"
- (5) RETAINING WALL / MSE WALL
- (6) ITEM REMOVED
- (7) TOPSOIL FURNISH AND PLACE, 4" SEEDING, CLASS 2A
- (8) CONCRETE BARRIER BASE
- (9) CONCRETE BARRIER, SINGLE FACE, 42" HEIGHT
- (10) CONCRETE BARRIER, DOUBLE FACE, 42" HEIGHT
- (11) LONGITUDINAL CONSTRUCTION JOINT, #6 EPOXY COATED BARS AT 30" CENTERS, INCLUDED IN COST OF PCC ITEMS
- (12) LONGITUDINAL CONSTRUCTION JOINT, #6 EPOXY COATED BARS AT 24" CENTERS, INCLUDED IN COST OF PCC ITEMS
- (13) TIE BARS, #6 EPOXY COATED BARS AT 24" CENTERS, INCLUDED IN COST OF COMBINATION CONCRETE CURB AND GUTTER TYPE B-6.24
- (14) PIPE UNDERDRAINS 6"
- (15) CHAIN LINK FENCE, 6"
- (16) AGGREGATE COLUMN (SEE STRUCTURAL PLANS)
- (17) CAST-IN-PLACE CONCRETE COPING SEAL WITH P/JF (SEE STRUCTURAL PLANS)
- (18) ANCHOR SLAB (SEE STRUCTURAL PLANS)
- (19) PARAPET (SEE STRUCTURAL PLANS)
- (20) SOIL REINFORCEMENT (SEE STRUCTURAL PLANS)
- (21) LIGHTWEIGHT FILL (SEE STRUCTURAL PLANS)
- (22) TEMPORARY PAVEMENT
- (23) TEMPORARY CONCRETE BARRIER
- (24) SUBBASE GRANULAR MATERIAL, TYPE C 4"
- (25) CONCRETE MEDIAN SURFACE, SPECIAL - 4"
- (26) POROUS GRANULAR EMBANKMENT
- (27) PORTLAND CEMENT CONCRETE PAVEMENT 10" (JOINTED)
- (28) PORTLAND CEMENT CONCRETE SHOULDER, 10"
- (29) TEMPORARY CONCRETE BARRIER (TO REMAIN PERMANENTLY)
- (30) POLYMERIZED HOT-MIX ASPHALT SURFACE COURSE, MIX "F", N90, (IL-9.5 MM); 1 3/4"
- (31) HOT-MIX ASPHALT BINDER COURSE, IL-19.0, N70; 2 1/4"
- (32) HOT-MIX ASPHALT SURFACE COURSE, MIX "D", N70, (IL-9.5 MM); 2"

NOTES:

- 1. THE ADDITIONAL THICKNESS OF AGGREGATE SUBGRADE IMPROVEMENT UNDER THE SHOULDER TO DRAIN TO UNDERDRAINS SHALL BE INCLUDED IN THE COST PER SQ. YD. OF AGGREGATE SUBGRADE IMPROVEMENT 24".
- 2. THE MAXIMUM ROLLOVER BETWEEN THE PAVEMENT AND THE SHOULDER ON THE HIGH SIDE OF THE SUPERELEVATION IS 8.0%.
- 3. FOR PORTLAND CEMENT CONCRETE PAVEMENT (JOINTED) DETAILS, SEE JOINTING AND PCC PAVEMENT DETAIL PLAN.
- 4. SEE SE TRANSITION DATA TABLE FOR SUPERELEVATION TRANSITIONS.
- 5. SEE GRADING PLAN FOR GRADING LIMITS AND SLOPES.
- 6. SEE ROADWAY DETAILS FOR ADDITIONAL INFORMATION AND LIMITS OF VARIOUS TYPES OF CONCRETE BARRIERS.
- 7. TIE BARS FOR BARRIER WALLS ARE NOT SHOWN ON THE TYPICAL SECTIONS FOR CLARITY.

BOXED ITEMS ARE INCLUDED IN THE COST OF CONTRACT.



D:\B\428-281-Typical-05.dgn
 USER NAME: alizedehn
 PLOT SCALE: 1/8" = 1'-0"
 PLOT DATE: 5/27/2014

DESIGNED - KAM
 DRAWN - NSA
 CHECKED - KCF
 DATE - 04/28/14

REVISED - 5/27/2014
 REVISED -
 REVISED -
 REVISED -

STATE OF ILLINOIS
 DEPARTMENT OF TRANSPORTATION

TYPICAL SECTIONS

SCALE: NONE SHEET 5 OF 11 SHEETS STA. TO STA.

F.A.I. RTE.	SECTION	COUNTY	TOTAL SHEETS	SHEET NO.
90/94/290	2013-010R	COOK	147	26
CONTRACT NO. 60W28				
ILLINOIS FED. AID PROJECT				

FILE PATH: C:\Users\alizedehn\Desktop\Projects\Final Sheets\016-1722\281-Typical-05.dgn