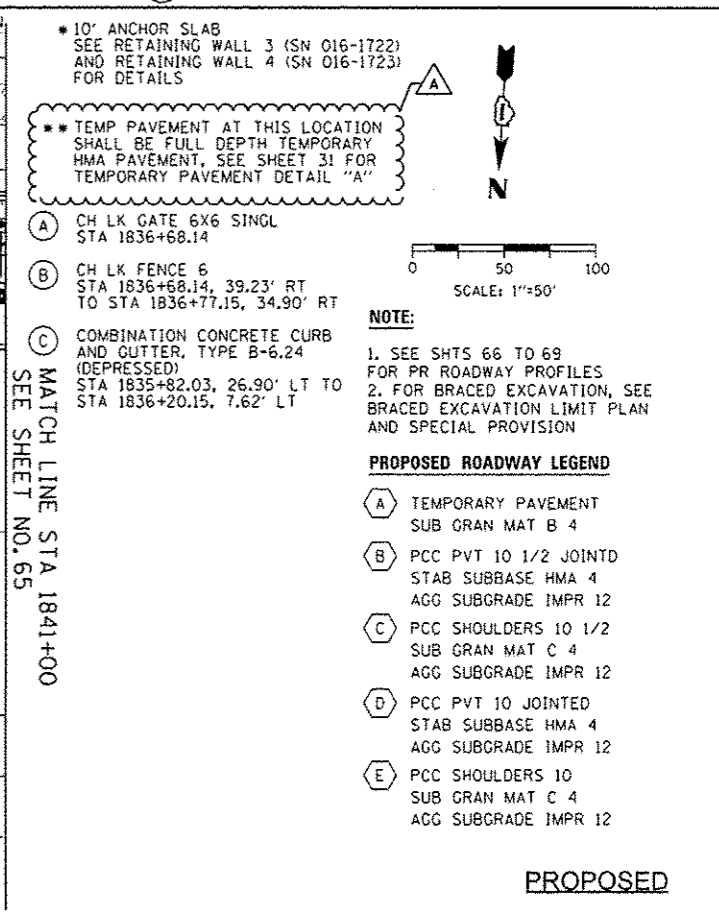
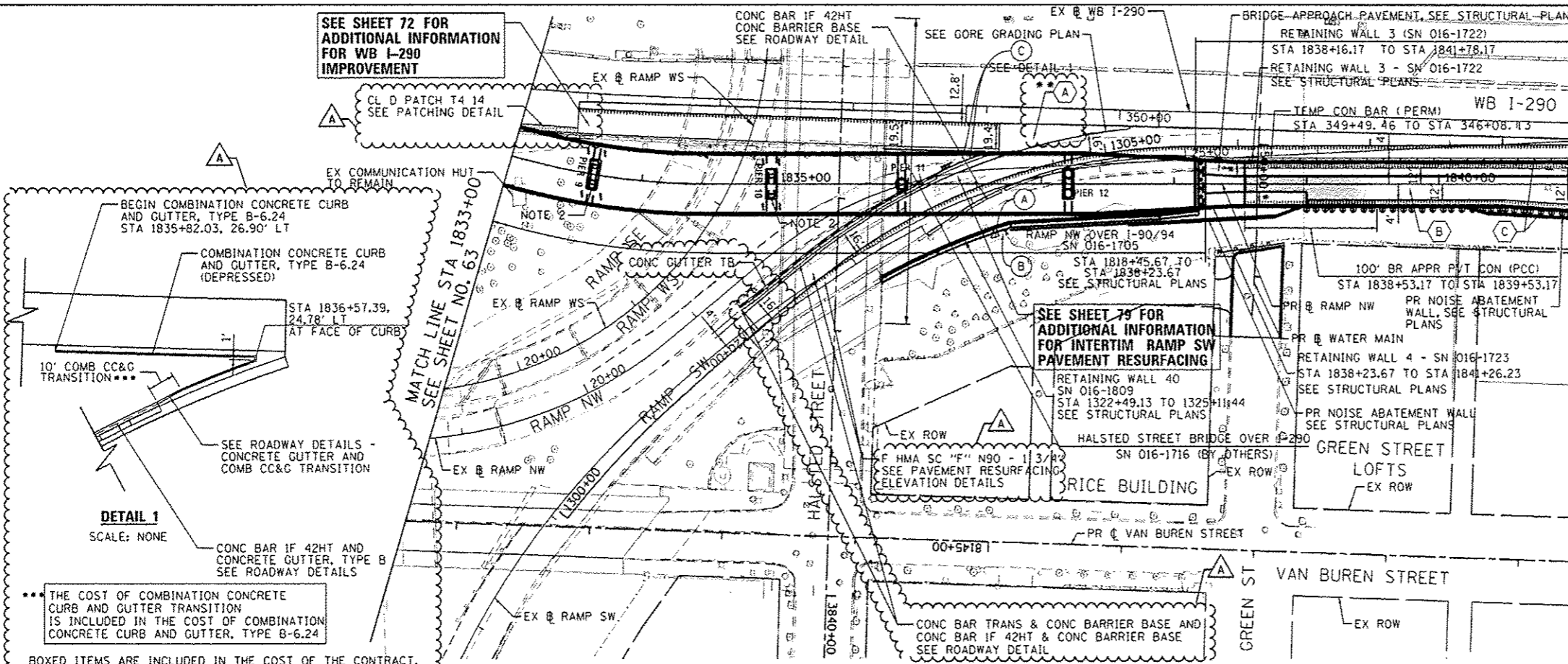
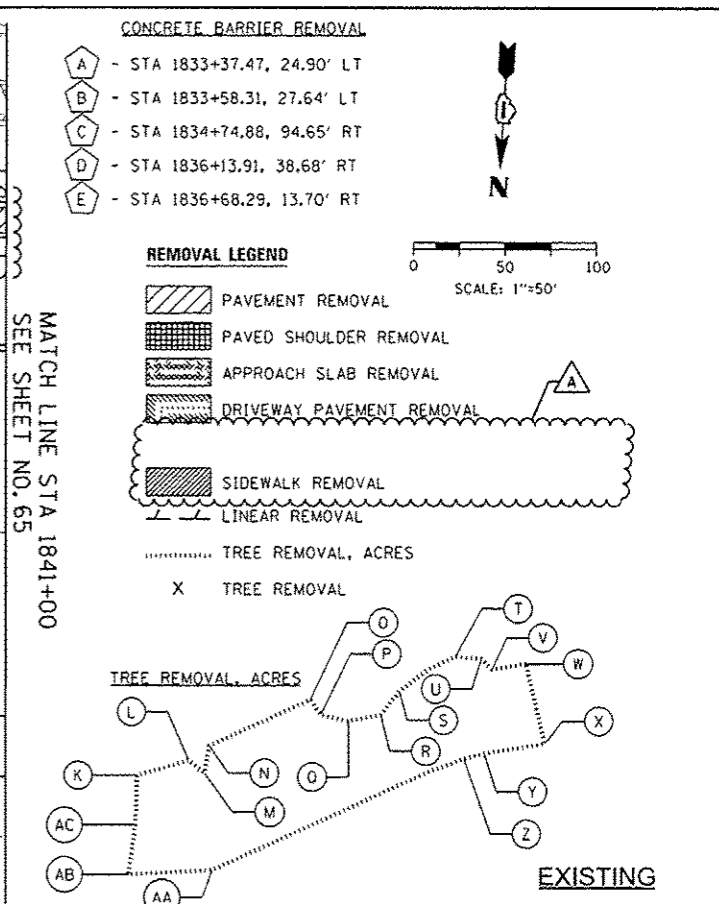
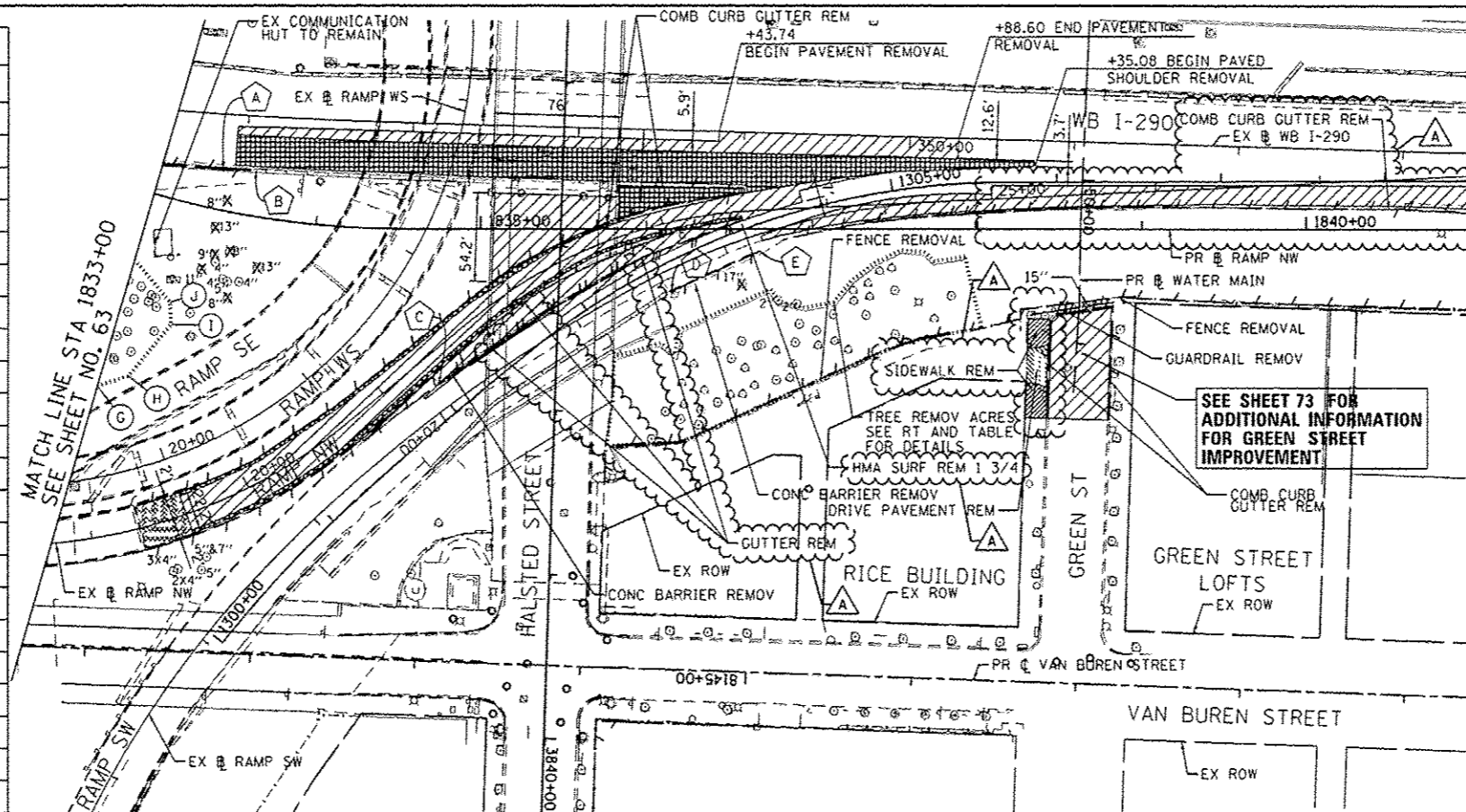


POINT	STATION	OFFSET	LT/RT
G	1833+00.00	121.98'	RT
H	1833+13.42	111.17'	RT
I	1833+28.05	74.57'	RT
J	1833+24.88	61.46'	RT
K	1835+80.47	77.95'	RT
L	1836+08.45	69.54'	RT
M	1836+17.09	76.68'	RT
N	1836+19.74	61.77'	RT
O	1836+74.87	36.56'	RT
P	1836+80.32	44.73'	RT
Q	1836+95.50	48.13'	RT
R	1837+13.17	44.68'	RT
S	1837+23.38	31.72'	RT
T	1837+53.91	12.82'	RT
U	1837+68.11	14.09'	RT
V	1837+74.02	19.66'	RT
W	1837+92.48	16.75'	RT
X	1838+02.82	60.52'	RT
Y	1837+69.56	66.01'	RT
Z	1837+58.44	69.05'	RT
AA	1836+21.24	130.01'	RT
AB	1835+75.77	132.42'	RT
AC	1835+79.60	105.20'	RT



**AECOM**  
 303 EAST WACKER DRIVE, SUITE 1400  
 CHICAGO, IL 60601-5276  
 PHONE: (312) 373-1100 FAX: (312) 373-4400

DESIGNED - KAM	REVISED - 5/27/2014
DRAWN - NSA/OPS	REVISED -
CHECKED - KCF	REVISED -
DATE - 04/28/14	REVISED -

STATE OF ILLINOIS  
 DEPARTMENT OF TRANSPORTATION

EXISTING AND PROPOSED PLAN  
 RAMP NW  
 SCALE: 1"=50' SHEET 5 OF 6 SHEETS STA. 1833+00 TO STA. 1841+00

F.A.I. RTE.	SECTION	COUNTY	TOTAL SHEETS	SHEET NO.
90/94/290	2013-010R	COOK	747	64
CONTRACT NO. 60W28				
ILLINOIS FED. AID PROJECT				