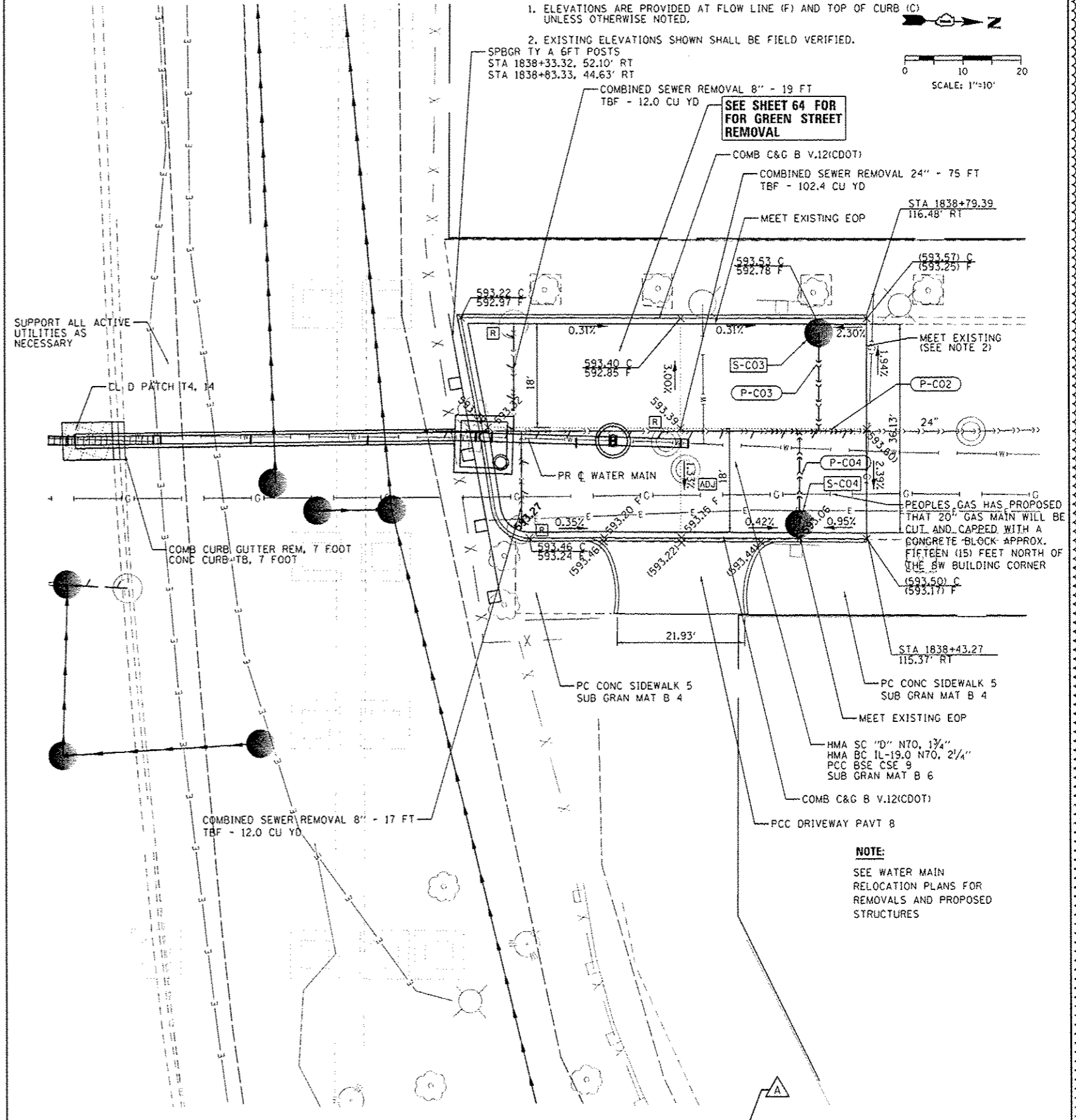
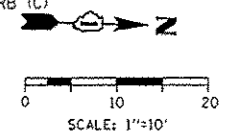


NOTES:

- ELEVATIONS ARE PROVIDED AT FLOW LINE (F) AND TOP OF CURB (C) UNLESS OTHERWISE NOTED.
- EXISTING ELEVATIONS SHOWN SHALL BE FIELD VERIFIED.



FILE PATH: C:\Users\jgaur\Documents\AECOM\Projects\Illinois\Transportation\60W28-SHT-PLAN-10.dgn
 PROJECT: 60W28-SHT-PLAN-10.dgn
 USER: jgaur
 DATE: 5/27/2014



DESIGNED - MSC/AFC/OPS	REVISED - A 5/27/2014
DRAWN - NSA/OPS	REVISED -
CHECKED - KCF	REVISED -
DATE - 04/28/14	REVISED -

USER NAME - jgaur	DESIGNED - MSC/AFC/OPS	REVISED - A 5/27/2014
PLOT SCALE - 20,0000' / 1"	DRAWN - NSA/OPS	REVISED -
PLOT DATE - 5/28/2014	CHECKED - KCF	REVISED -
	DATE - 04/28/14	REVISED -

**STATE OF ILLINOIS
DEPARTMENT OF TRANSPORTATION**

ROADWAY, DRAINAGE AND UTILITY PLAN AT GREEN STREET	
SCALE: 1"=10'	SHEET 1 OF 1 SHEETS STA. TO STA.

F.A.I. RTE. 90/94/290	SECTION 2013-010R	COUNTY COOK	TOTAL SHEETS 747	SHEET NO. 73
ILLINOIS FED. AID PROJECT			CONTRACT NO. 60W28	