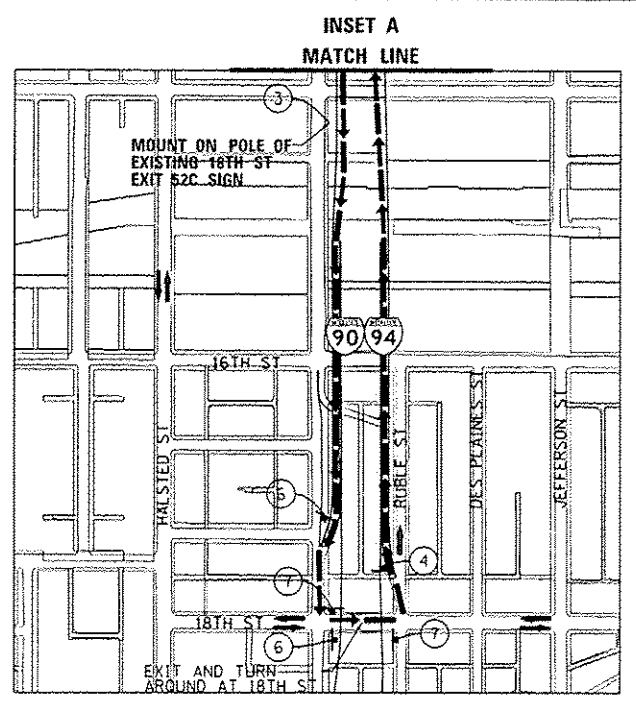


- TRAFFIC CONTROL NOTES**
1. PRIMARY DETOUR ROUTE: CONTINUE ON I-90/94 E TO 18TH ST, RETURN NORTH ON I-90/94 W, EXITING AND RE-ENTERING AT ROOSEVELT RD.
  2. DETOUR TO BE USED WHEN ROOSEVELT NB ENTRANCE TO I-90/94 IS OPEN.
  3. DETOUR SIGNING MUST BE INSTALLED PRIOR TO CLOSURE RAMP SW.
  4. RAMP CLOSURE SHALL FOLLOW THE LATEST VERSION OF THE IDOT HIGHWAY STANDARDS AND DISTRICT 1 STANDARD DETAIL TC-08. SEE SUGGESTED STAGES OF CONSTRUCTION AND TRAFFIC CONTROL PLANS FOR ADDITIONAL INFORMATION.
  5. PLACEMENT AND SPACING OF SIGNS AND BARRICADES SHALL BE IN ACCORDANCE WITH IDOT DISTRICT 1 STANDARD DETAIL TC-08 AND TC-21.
  6. ALL DETOUR SIGNS SHALL HAVE AN ORANGE BACKGROUND WITH BLACK LETTERS.
  7. THE CONTRACTOR IS RESPONSIBLE FOR COORDINATION WITH OTHER ROAD WORK IN THE AREA.
  8. THE COST OF SUPPLYING, ERECTING AND MAINTAINING BARRICADES, WARNING LIGHTS AND STANDARD SIGNS ALONG ALL DETOUR ROUTES SHALL BE INCLUDED IN THE CONTRACT COST OF TRAFFIC CONTROL AND PROTECTION (SPECIAL).
  9. THIS DETOUR CAN ONLY BE USED ON ONE (1), 54-HOUR (MAXIMUM) WEEKEND CLOSURE OF RAMP SW TO COMPLETE PROPOSED WATER MAIN CONNECTION IN STAGE 1 TO THE EXTENT SHOWN ON THE PLANS AND DURING GIRDER ERECTION. SEE SUGGESTED STAGES OF CONSTRUCTION AND TRAFFIC CONTROL PLANS AND THE SPECIAL PROVISION "GIRDER ERECTION INFORMATION AND RESTRICTIONS" FOR ADDITIONAL INFORMATION.

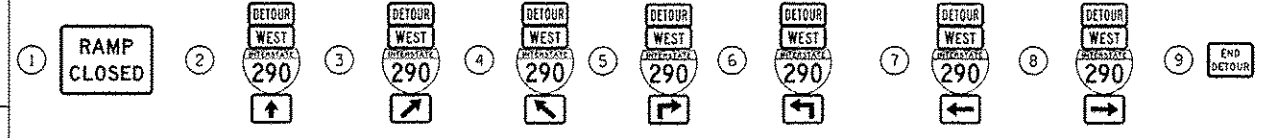


**DETOUR SIGNS TYPE & SIZE**  
(ALL SIGN COLORS SHALL BE ACCORDING TO THE LATEST EDITION OF THE MUTCD)

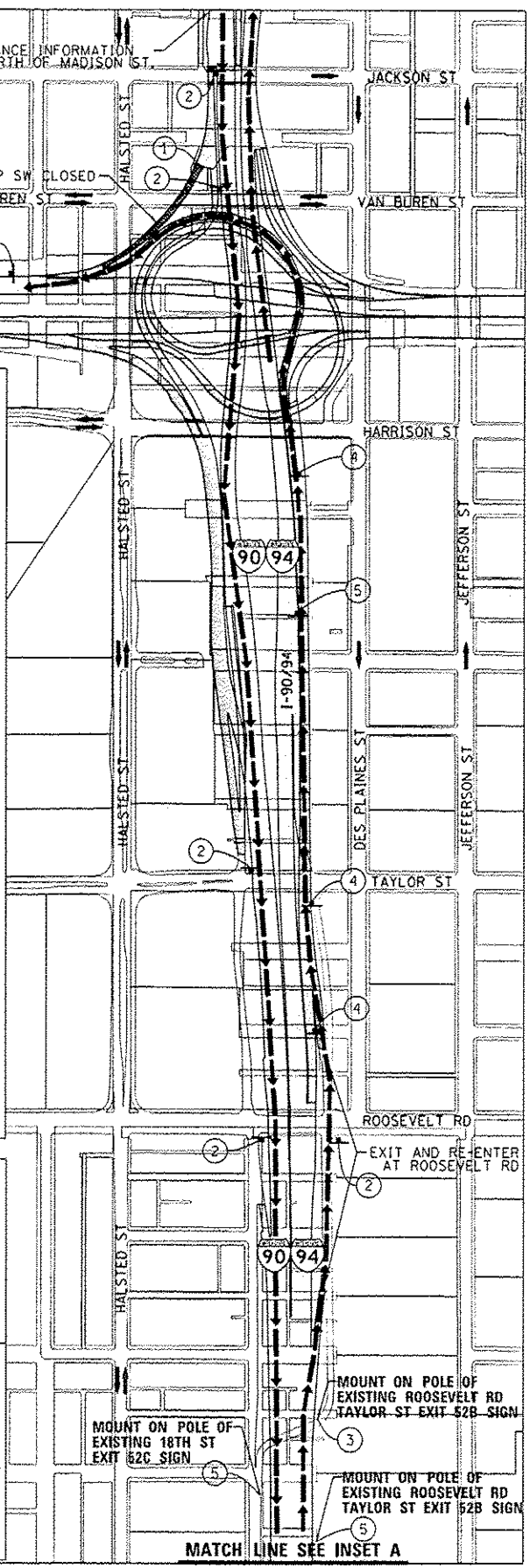
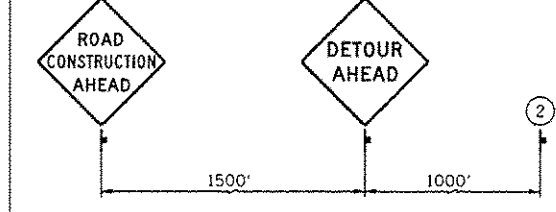
- |  |   |
|--|---|
|  | M1-1 (30"x24")  |
|  | M3-4 (24"x12")  |
|  | M4-8 (24"x12")  |
|  | M4-8A (24"x18")   |
|  | M5-1 (21"x15")  |
|  | M6-1 (21"x15")  |
|  | M6-2 (21"x15")  |
|  | M6-3 (21"x15")  |
|  | W20-2 (48"x48")   |
|  | W20-30-48   |
|  | SEE TC-08 FOR SIGN INFORMATION BLACK LETTERS ON ORANGE BACKGROUND (48"x36") |

- LEGEND**
- SUGGESTED PRIMARY ROUTE
  - TEMPORARY SIGN
  - EXISTING SIGN
  - EXISTING POLE
  - SIGN BARRICADE TYPE III
  - TWO-WAY STREET
  - ONE-WAY STREET
  - RAMP CLOSURE

**SIGN ASSEMBLIES**



**ADVANCE INFORMATION SIGNS**



DIGW28-shs-Detour-02.dgn  
 USER NAME = brossj  
 PLOT SCALE = 600.0000 / 1 in.  
 PLOT DATE = 5/27/2014

DESIGNED - AFC  
 DRAWN - AFC  
 CHECKED - KCF  
 DATE - 04/28/14

REVISED - 05/27/2014  
 REVISED -  
 REVISED -  
 REVISED -

STATE OF ILLINOIS  
 DEPARTMENT OF TRANSPORTATION

**DETOUR PLAN**  
 RAMP SW (ROOSEVELT NB OPEN)

SCALE: 1" = 300'  
 SHEET 1 OF 1 SHEETS STA. TO STA.

F.A.I. RTE.	SECTION	COUNTY	TOTAL SHEETS	SHEET NO.
90/94/290	2013-010R	COOK	747	87
ILLINOIS FED. AID PROJECT			CONTRACT NO. 60W28	