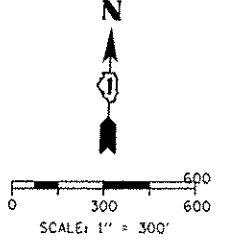


TRAFFIC CONTROL NOTES

1. PRIMARY DETOUR ROUTE: TAKE RAMP NW TO I-290 WB. EXIT AT ASHLAND AVE. AND USE TEXAS U-TURN TO I-290 (EB) TO RAMP EN.
2. DETOUR SIGNING MUST BE INSTALLED PRIOR TO CLOSURE OF WB I-90/94 (NB).
3. ROAD CLOSURE SHALL FOLLOW THE LATEST VERSION OF THE IDOT HIGHWAY STANDARDS AND DISTRICT 1 STANDARD DETAIL TC-08. SEE SUGGESTED STAGES OF CONSTRUCTION AND TRAFFIC CONTROL PLANS FOR ADDITIONAL INFORMATION.
4. PLACEMENT AND SPACING OF SIGNS AND BARRICADES SHALL BE IN ACCORDANCE WITH IDOT DISTRICT 1 STANDARD DETAIL TC-08 AND TC-21.
5. ALL DETOUR SIGNS SHALL HAVE AN ORANGE BACKGROUND WITH BLACK LETTERS.
6. THE CONTRACTOR IS RESPONSIBLE FOR COORDINATION WITH OTHER ROAD WORK IN THE AREA.
7. THE COST OF SUPPLYING, ERECTING AND MAINTAINING BARRICADES, WARNING LIGHTS AND STANDARD SIGNS ALONG ALL DETOUR ROUTES SHALL BE INCLUDED IN THE CONTRACT COST OF TRAFFIC CONTROL AND PROTECTION (SPECIAL).
8. THIS DETOUR CAN ONLY BE USED DURING GIRDER ERECTION. REFER TO SPECIAL PROVISION "GIRDER ERECTION INFORMATION AND RESTRICTIONS" FOR ADDITIONAL INFORMATION.
9. DETOUR SIGNING SHALL BE INSTALLED ACCORDING TO DETOUR PLAN - TAYLOR STREET ENTRANCE RAMP OF THE SUGGESTED PRIMARY ROUTE FOR WB I-90/94 (NB). SEE SHEET NO. 90.
10. ADDITIONAL CLOSURES/DETOURS REQUIRED:
 - A. NB ASHLAND AVE BETWEEN VAN BUREN ST AND HARRISON ST.
 - B. EB CONGRESS PARKWAY EAST OF ASHLAND
 - C. RACINE AVE ENTRANCE RAMP TO I-290 (WB)

LEGEND

- SUGGESTED PRIMARY ROUTE
- SUGGESTED SECONDARY ROUTE
- TEMPORARY SIGN
- EXISTING SIGN
- EXISTING POLE
- SIGN BARRICADE TYPE III
- TWO-WAY STREET
- ONE-WAY STREET
- ROAD CLOSURE

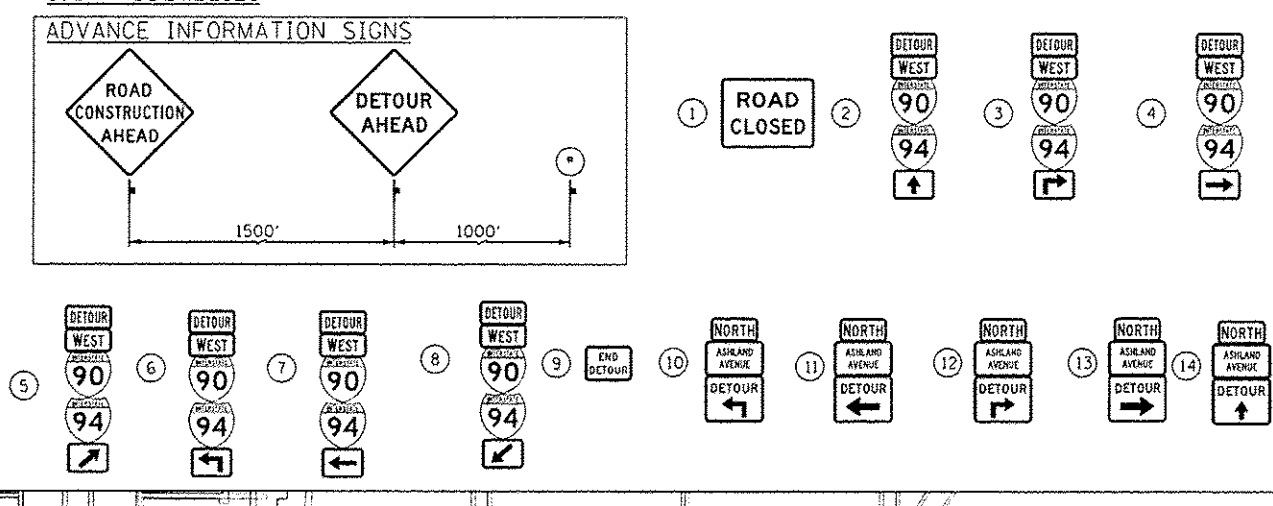


DETOUR SIGNS TYPE & SIZE

(ALL SIGN COLORS SHALL BE ACCORDING TO THE LATEST EDITION OF THE MUTCD)

- M1-1 (24"x24")
- M3-4 (24"x12")
- M4-8 (24"x12")
- M5-1 (21"x15")
- M6-1 (21"x15")
- M6-3 (21"x15")
- W20-2 (48"x48")
- W20-1103-48
- R11-2 SEE TC-21 FOR SIGN INFORMATION (48"x30")
- M4-BA (24"x18")

SIGN ASSEMBLIES



D168W28-shr-Detour-87.dgn	DESIGNED -AFC	REVISED - 05/27/2014
USER NAME - brosej	DRAWN -AFC	REVISED -
PLOT SCALE - 600.0000 / in.	CHECKED -KCF	REVISED -
PLOT DATE - 5/27/2014	DATE - 4/28/2014	REVISED -

STATE OF ILLINOIS
DEPARTMENT OF TRANSPORTATION

DETOUR PLAN
WB I-90/94 (NB) (GIRDER ERECTION)
SCALE: 1" = 300' SHEET 1 OF 1 SHEETS STA. TO STA.

F.A.L. RTE.	SECTION	COUNTY	TOTAL SHEETS	SHEET NO.
90/94/290	2013-010R	COOK	747	908
CONTRACT NO. 60W28			ILLINOIS FED. AID PROJECT	