

DETOUR SIGNS TYPE & SIZE
 (ALL SIGN COLORS SHALL BE ACCORDING TO THE LATEST EDITION OF THE MUTCD)

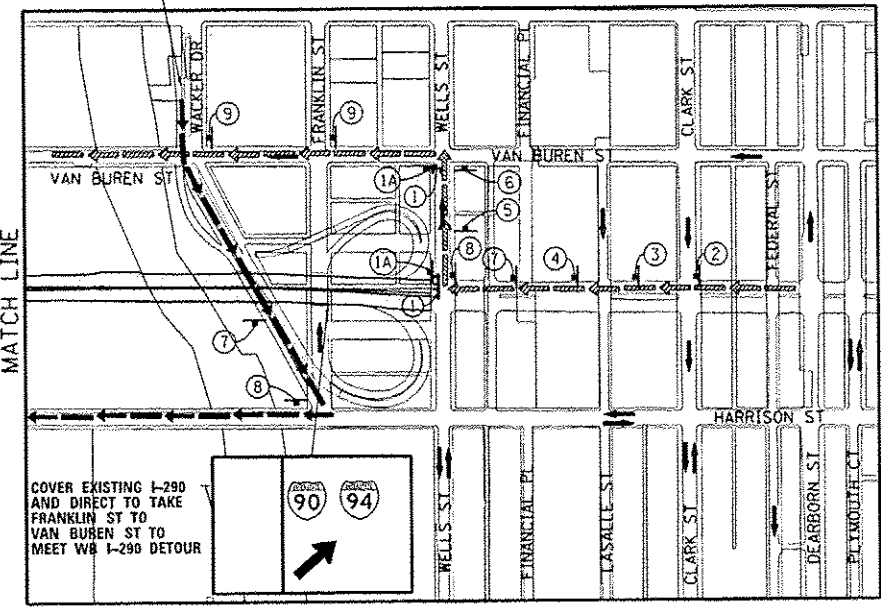
- R5-1 (48"x48")
- M1-1 (30"x24")
- M3-4 (24"x12")
- M4-8 (24"x12")
- M4-8A (24"x18")
- M5-1 (21"x15")
- M6-1 (21"x15")
- M6-2A (21"x15")
- M6-3 (21"x15")
- W20-2 (48"x48")
- W20-30-48
- W20-1103-48
- R11-2
SEE TC-21 FOR SIGN INFORMATION (48"x30")

TRAFFIC CONTROL NOTES

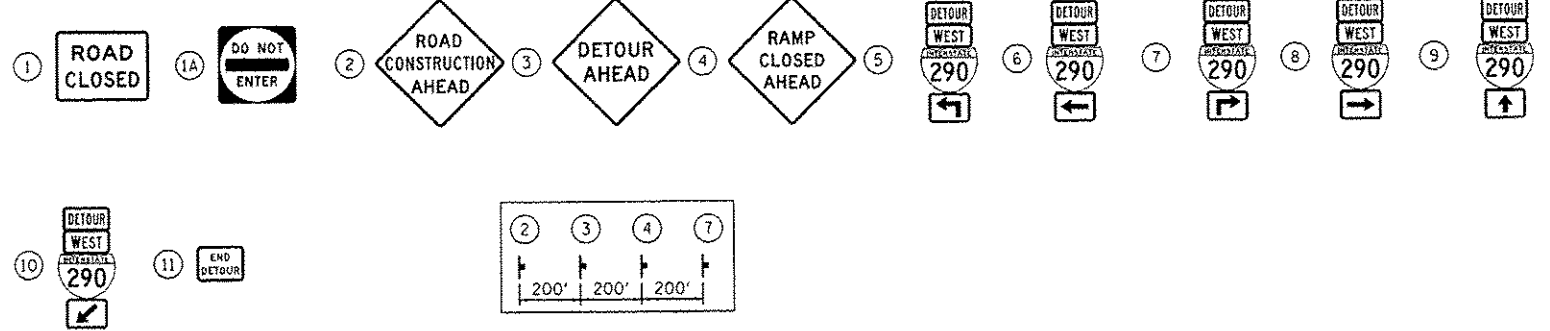
1. PRIMARY DETOUR: TURN RIGHT ON WELLS ST. AND LEFT ON VAN BUREN ST. UNTIL PAULINA ST. ENTRANCE ONTO WB I-290.
2. DETOUR SIGNING MUST BE INSTALLED PRIOR TO CLOSURE OF WB I-290.
3. ROAD CLOSURE SHALL FOLLOW THE LATEST VERSION OF THE IDOT HIGHWAY STANDARDS AND DISTRICT 1 STANDARD DETAIL TC-08. SEE SUGGESTED STAGES OF CONSTRUCTION AND TRAFFIC CONTROL PLANS FOR ADDITIONAL INFORMATION.
4. PLACEMENT AND SPACING OF SIGNS AND BARRICADES SHALL BE IN ACCORDANCE WITH IDOT DISTRICT 1 STANDARD DETAIL TC-08 AND TC-21.
5. ALL DETOUR SIGNS SHALL HAVE AN ORANGE BACKGROUND WITH BLACK LETTERS.
6. THE CONTRACTOR IS RESPONSIBLE FOR COORDINATION WITH OTHER ROAD WORK IN THE AREA.
7. THE COST OF SUPPLYING, ERECTING AND MAINTAINING BARRICADES, WARNING LIGHTS AND STANDARD SIGNS ALONG ALL DETOUR ROUTES SHALL BE INCLUDED IN THE CONTRACT COST OF TRAFFIC CONTROL AND PROTECTION (SPECIAL).
8. THIS DETOUR CAN ONLY BE USED DURING GIRDER ERECTION. REFER TO THE SPECIAL PROVISION "GIRDER ERECTION INFORMATION AND RESTRICTIONS" FOR ADDITIONAL INFORMATION.
9. SECONDARY DETOUR: FROM LOWER WACKER DR. TURN RIGHT ON HARRISON ST. THEN RIGHT ON JEFFERSON ST. AND LEFT ONTO VAN BUREN ST.
10. ADDITIONAL CLOSURES/DETOURS REQUIRED:
 - A. LOWER WACKER ENTRANCE TO WB I-290.
 - B. FRANKLIN ST ACCESS TO WB I-290.
 - C. REVERSE ONE-WAY FLOW OF WELLS ST. BETWEEN CONGRESS PARKWAY AND VAN BUREN ST.

COVER EXISTING I-290 ON LOWER WACKER AND DIRECT TO TAKE UPPER WACKER TO HARRISON STREET

INSET "A"

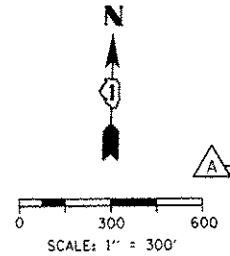


SIGN ASSEMBLIES



LEGEND

- SUGGESTED PRIMARY ROUTE FOR WB I-290
- SECONDARY CLOSURES AND DETOURS NECESSARY TO FACILITATE PRIMARY ROUTE
- TEMPORARY SIGN
- EXISTING SIGN
- EXISTING POLE
- SIGN BARRICADE TYPE III
- TWO-WAY STREET
- ONE-WAY STREET
- RAMP CLOSURE



FILE PATH: C:\p\proj\60w28\10160w28-jnt-06-low-88.dgn



D160W28-sh1-Detour-88.dgn	DESIGNED - AFC	REVISED - 05/27/2014
USER NAME: a_brose_j	DRAWN - AFC	REVISED -
PLOT SCALE = 600.0000 / 1"	CHECKED - KCF	REVISED -
PLOT DATE = 5/27/2014	DATE - 04/28/14	REVISED -

**STATE OF ILLINOIS
 DEPARTMENT OF TRANSPORTATION**

**DETOUR PLAN
 WB I-290 (GIRDER ERECTION)**
 SCALE: 1" = 300' SHEET 1 OF 1 SHEETS STA. TO STA.

F.A.I. RTE.	SECTION	COUNTY	TOTAL SHEETS	SHEET NO.
90/94/290	2013-010R	COOK	747	90C
CONTRACT NO. 60W28			ILLINOIS FED. AID PROJECT	