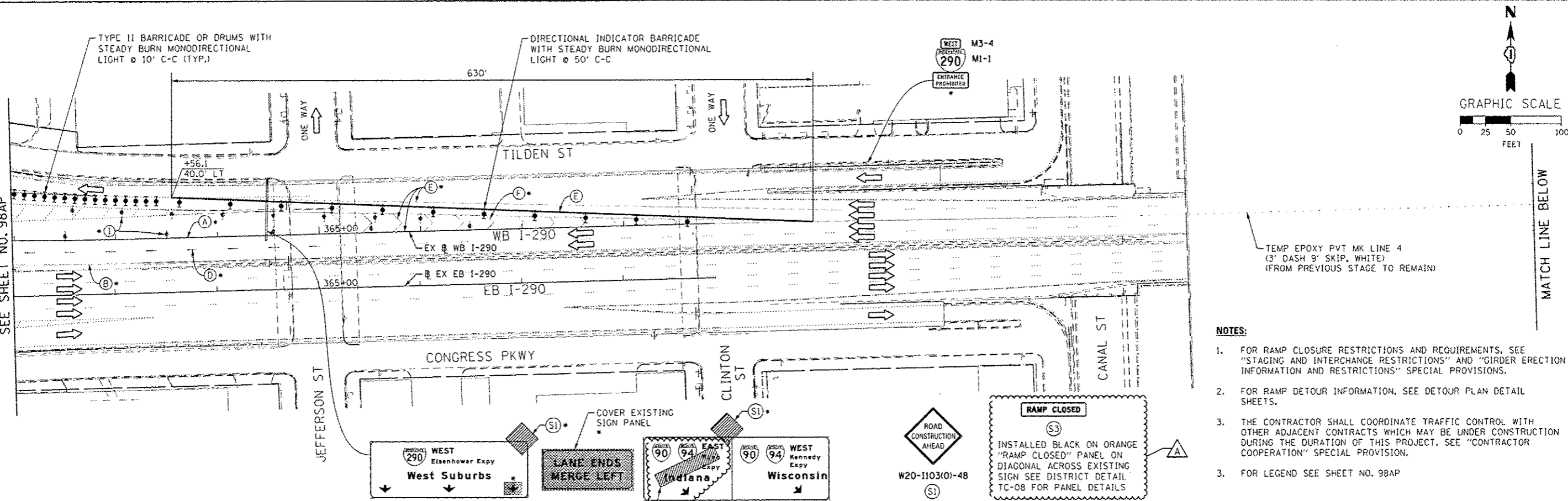
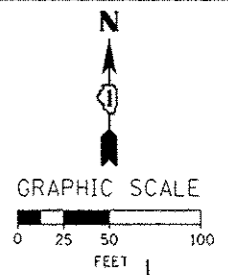


MATCH LINE STA 362+00 EB I-290
SEE SHEET NO. 98AP

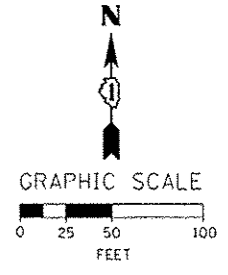
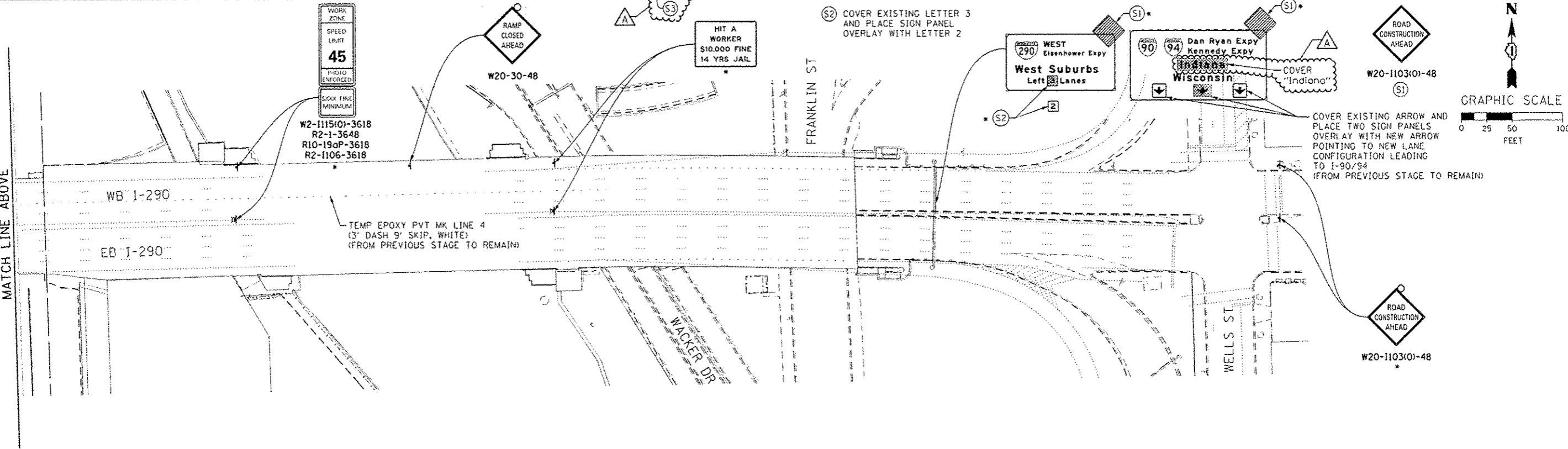


- NOTES:**
1. FOR RAMP CLOSURE RESTRICTIONS AND REQUIREMENTS, SEE "STAGING AND INTERCHANGE RESTRICTIONS" AND "GIRDER ERECTION INFORMATION AND RESTRICTIONS" SPECIAL PROVISIONS.
 2. FOR RAMP DETOUR INFORMATION, SEE DETOUR PLAN DETAIL SHEETS.
 3. THE CONTRACTOR SHALL COORDINATE TRAFFIC CONTROL WITH OTHER ADJACENT CONTRACTS WHICH MAY BE UNDER CONSTRUCTION DURING THE DURATION OF THIS PROJECT. SEE "CONTRACTOR COOPERATION" SPECIAL PROVISION.
 3. FOR LEGEND SEE SHEET NO. 98AP



MATCH LINE BELOW

MATCH LINE ABOVE



* FROM PREVIOUS STAGE TO REMAIN



DESIGNED - OPS	REVISED - Δ 5/27/2014
DRAWN - PHP	REVISED -
CHECKED - KCF	REVISED -
DATE - 04/28/14	REVISED -

**STATE OF ILLINOIS
DEPARTMENT OF TRANSPORTATION**

SUGGESTED STAGES OF CONSTRUCTION AND TRAFFIC CONTROL PLAN			
MAINLINE STAGING 3A-3C - RAMP WS CLOSURE			
SCALE: 1" = 50'	SHEET 2 OF 2 SHEETS	STA. TO STA.	

F.A.I. RTE.	SECTION	COUNTY	TOTAL SHEETS	SHEET NO.
90/94/290	2013-010R	COOK	747	98A0
CONTRACT NO. 60W28				
ILLINOIS FED. AID PROJECT				