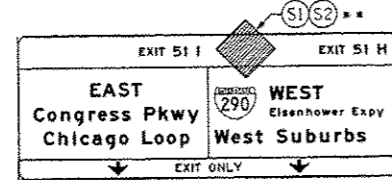
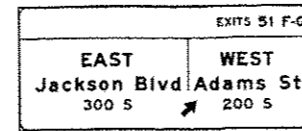


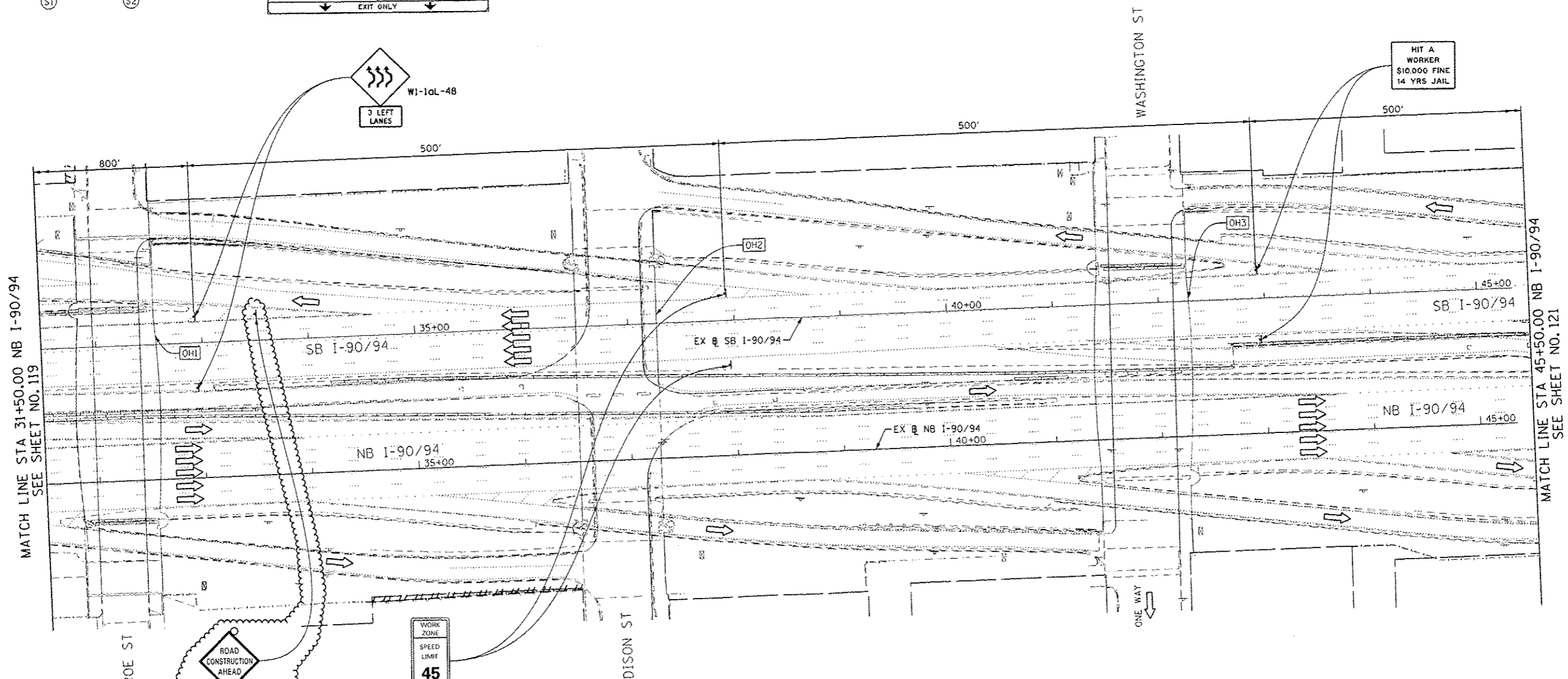
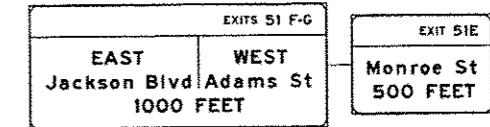
OH1 EXISTING OVERHEAD SIGN TO REMAIN
SEE CONTRACT 60W26 FOR SIGN DETAIL



OH2 EXISTING OVERHEAD SIGN

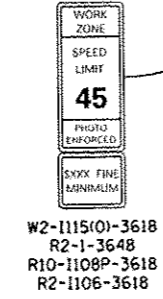
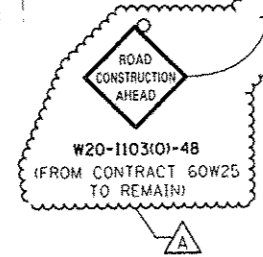


OH3 EXISTING OVERHEAD SIGNS



MATCH LINE STA 31+50.00 NB I-90/94
SEE SHEET NO. 119

MATCH LINE STA 45+50.00 NB I-90/94
SEE SHEET NO. 121

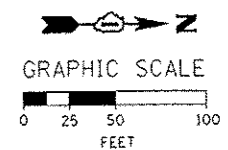


PROPOSED TEMP PAVEMENT MARKINGS AND TRAFFIC CONTROL DEVICES

- (A) TEMP EPOXY PVT MK LINE 4 (SOLID WHITE)
- (B) TEMP EPOXY PVT MK LINE 4 (SOLID YELLOW)
- (C) TEMP EPOXY PVT MK LINE 4 (2' DASH 6' SKIP, WHITE)
- (D) TEMP EPOXY PVT MK LINE 5 (10' DASH 30' SKIP, WHITE)
- (E) TEMP EPOXY PVT MK LINE 8 (SOLID WHITE)
- (F) TEMP EPOXY PVT MK LINE 12 (WHITE CHEVRONS @ 45°, 30' SPACING) (TYP)
- (G) TEMP CONC BARRIER @ 12:1 ON TAPERS UNLESS OTHERWISE NOTED
- (H) IMP ATTN TEMP FRN TL3
- (I) TYPE II BARRICADE OR DRUMS WITH STEADY BURN MONODIRECTIONAL LIGHT @ 50' C-C (TYP) ON TAPERS AND RAMP @ 100' C-C (TYP) ON TANGENTS
- (J) DIRECTIONAL INDICATOR BARRICADE WITH STEADY BURN MONODIRECTIONAL LIGHT @ 50' C-C
- (K) REL TEMP CONC BARRIER @ 12:1 ON TAPERS UNLESS OTHERWISE NOTED
- (L) IMP ATTN REL FRN TL3

LEGEND:

- WORK ZONE
- TEMPORARY CONCRETE BARRIER
- TEMPORARY IMPACT ATTENUATOR
- TEMPORARY SOIL RETENTION SYSTEM OR BRACED EXCAVATION
- DIRECTION OF TRAFFIC FLOW
- TYPE III BARRICADE
- TYPE II BARRICADE OR DRUMS WITH STEADY BURN MONODIRECTIONAL LIGHT
- DIRECTIONAL INDICATOR BARRICADE WITH STEADY BURN MONODIRECTIONAL LIGHT
- SIGN
- ARROW BOARD
- REMOVAL LIMITS
- TEMPORARY PAVEMENT



NOTES:

1. ALL SIGNINGS ON SB I-90/94 SHALL BE COORDINATED ON FIELD WITH CONTRACTORS OF CONTRACT 60W26.

** FROM CONTRACT 60W26 TO REMAIN



DESIGNED - OPS	REVISED - 5/27/2014
DRAWN - PHP	REVISED -
CHECKED - KCF	REVISED -
DATE - 04/28/14	REVISED -

STATE OF ILLINOIS
DEPARTMENT OF TRANSPORTATION

**SUGGESTED STAGES OF CONSTRUCTION AND TRAFFIC CONTROL PLAN
MAINLINE STAGING 1**

SCALE: 1" = 50' SHEET 11 OF 13 SHEETS STA. 31+50 TO STA. 45+50

F.A.I. RTE. 90/94/290	SECTION 2013-010R	COUNTY COOK	TOTAL SHEETS 747	SHEET NO. 120
CONTRACT NO. 60W26				ILLINOIS FED. AID PROJECT

FILE PATH: ... \3880939... \local\LANE\CH0000\Documents\01_America\Transportation\60W26\9133_Circle\Phase 11\2013_CAD\2013_Resubmittal\Drawings\60W26-11-11-Staging-11