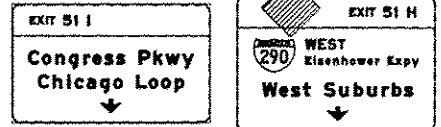
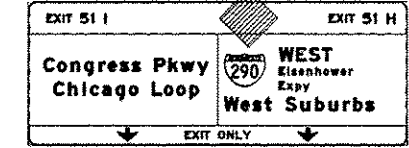


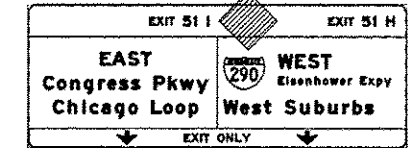
[OH1] EXISTING OVERHEAD SIGNS TO REMAIN  
SEE CONTRACT 60W26 FOR SIGN DETAIL



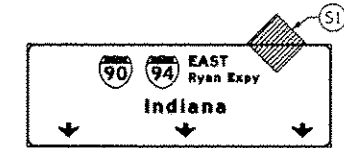
[OH2] EXISTING OVERHEAD SIGNS TO REMAIN  
SEE CONTRACT 60W26 FOR SIGN DETAIL



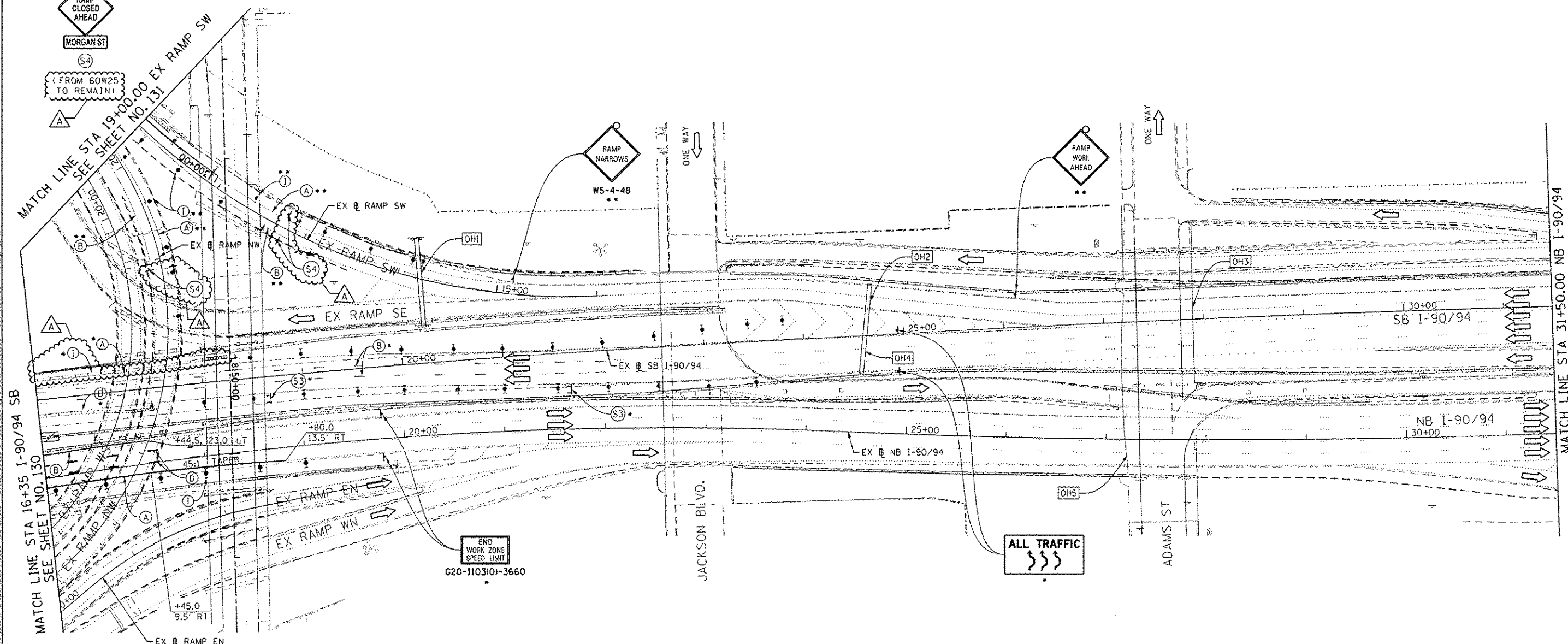
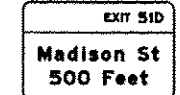
[OH3] EXISTING OVERHEAD SIGNS TO REMAIN  
SEE CONTRACT 60W26 FOR SIGN DETAIL



[OH4] EXISTING OVERHEAD SIGN



[OH5] EXISTING OVERHEAD SIGN

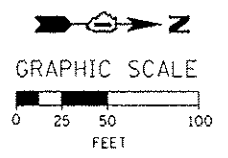


- NOTES:**
- ALL TRAVEL LANE ON RAMP SW AND RAMP NW BE MAINTAINED IN CURRENT STAGE AS PER CONTRACT 60W26.
  - ALL TRAVEL LANES ON SB I-90/94 SHALL TIE INTO INTO CURRENT STAGE OF CONSTRUCTION OF HALSTED AND WEST HARRISON CONTRACT 60W26 AND CONFORM TO ALL APPLICABLE IDOT DISTRICT 1 STANDARDS.
  - ALL PAVEMENT MARKING AND SIGNINGS ON SB I-90/94 AND EXIT RAMP SW AND SE SHALL BE COORDINATED ON FIELD WITH CONTRACTORS OF CONTRACT 60W26 AND AS PER FIELD ENGINEER.

\* FROM PREVIOUS STAGE TO REMAIN  
\*\* FROM CONTRACT 60W26 TO REMAIN

- PROPOSED TEMP PAVEMENT MARKINGS AND TRAFFIC CONTROL DEVICES**
- (A) TEMP EPOXY PVT MK LINE 4 (SOLID WHITE)
  - (B) TEMP EPOXY PVT MK LINE 4 (SOLID YELLOW)
  - (C) TEMP EPOXY PVT MK LINE 4 (2' DASH 6' SKIP, WHITE)
  - (D) TEMP EPOXY PVT MK LINE 5 (10' DASH 30' SKIP, WHITE)
  - (E) TEMP EPOXY PVT MK LINE 8 (SOLID WHITE)
  - (F) TEMP EPOXY PVT MK LINE 12 (WHITE CHEVRONS @ 45°, 30' SPACING) (TYP)
  - (G) TEMP CONC BARRIER @ 12:1 ON TAPERS UNLESS OTHERWISE NOTED
  - (H) IMP ATTN TEMP FRN TL3
  - (I) TYPE II BARRICADE OR DRUMS WITH STEADY BURN MONODIRECTIONAL LIGHT @ 50' C-C (TYP) ON TAPERS AND RAMP @ 100' C-C (TYP) ON TANGENTS
  - (J) DIRECTIONAL INDICATOR BARRICADE WITH STEADY BURN MONODIRECTIONAL LIGHT @ 50' C-C
  - (K) REL TEMP CONC BARRIER @ 12:1 ON TAPERS UNLESS OTHERWISE NOTED
  - (L) IMP ATTN REL FRN TL3

- LEGEND:**
- [Hatched Box] WORK ZONE
  - [Dashed Line] TEMPORARY CONCRETE BARRIER
  - [Dashed Line] TEMPORARY IMPACT ATTENUATOR
  - [Wavy Line] TEMPORARY SOIL RETENTION SYSTEM OR BRACED EXCAVATION
  - [Arrow] DIRECTION OF TRAFFIC FLOW
  - [Type III Barricade] TYPE III BARRICADE
  - [Type II Barricade] TYPE II BARRICADE OR DRUMS WITH STEADY BURN MONODIRECTIONAL LIGHT
  - [Directional Indicator Barricade] DIRECTIONAL INDICATOR BARRICADE WITH STEADY BURN MONODIRECTIONAL LIGHT
  - [Sign] SIGN
  - [Arrow Board] ARROW BOARD
  - [Removal Limits] REMOVAL LIMITS
  - [Temporary Pavement] TEMPORARY PAVEMENT



Di60w26-shr-5cngng2-10  
USER NAME = pte1p2  
PLOT SCALE = 50.0000 / in.  
PLOT DATE = 5/25/2014

DESIGNED - OPS	REVISED - 5/27/2014
DRAWN - PHP	REVISED -
CHECKED - KCF	REVISED -
DATE - 04/28/14	REVISED -

STATE OF ILLINOIS  
DEPARTMENT OF TRANSPORTATION

SUGGESTED STAGES OF CONSTRUCTION AND TRAFFIC CONTROL PLAN  
MAINLINE STAGING 2

SCALE: 1" = 50' SHEET 11 OF 14 SHEETS STA. 16+35 TO STA. 31+50

F.A.I. RTE. 90/94/290	SECTION 2013-010R	COUNTY COOK	TOTAL SHEETS 747	SHEET NO. 133
CONTRACT NO. 60W28				
ILLINOIS FED. AID PROJECT				