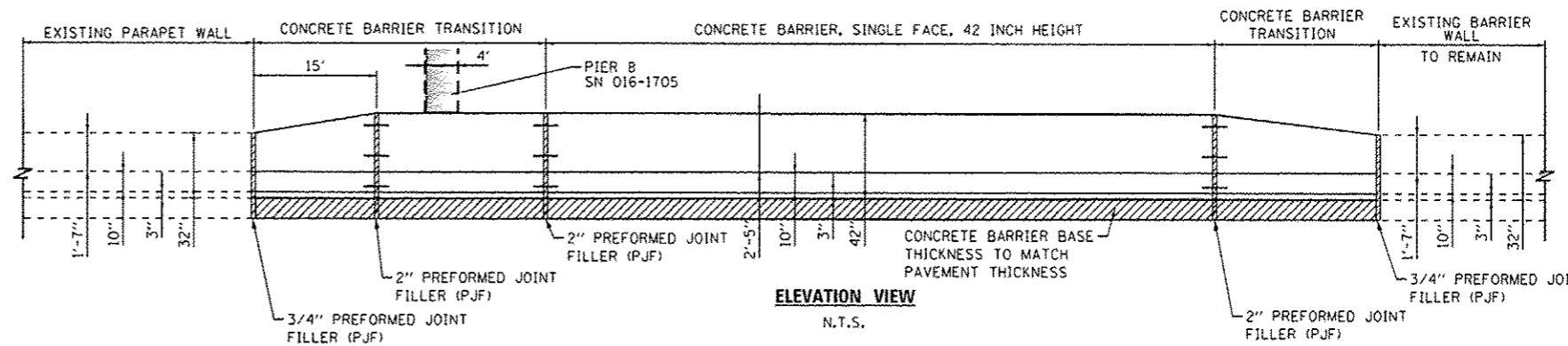
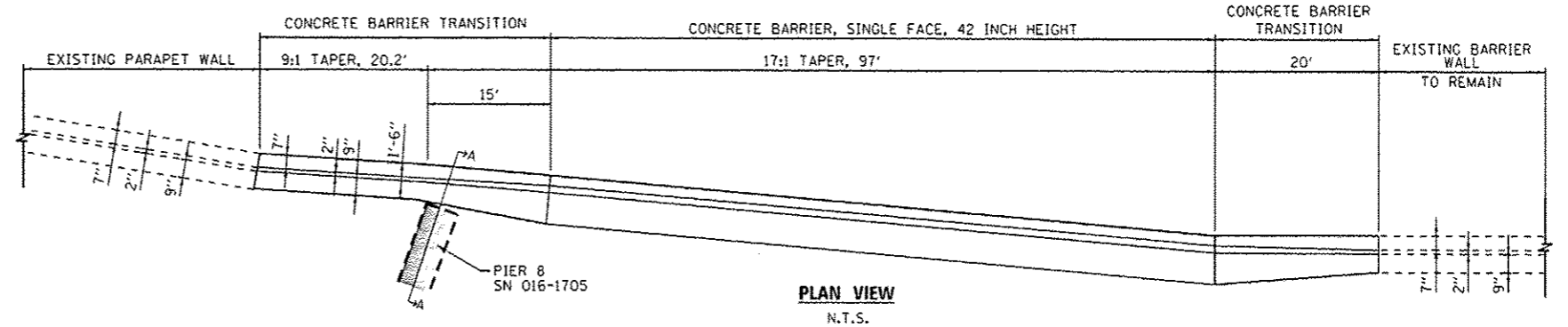
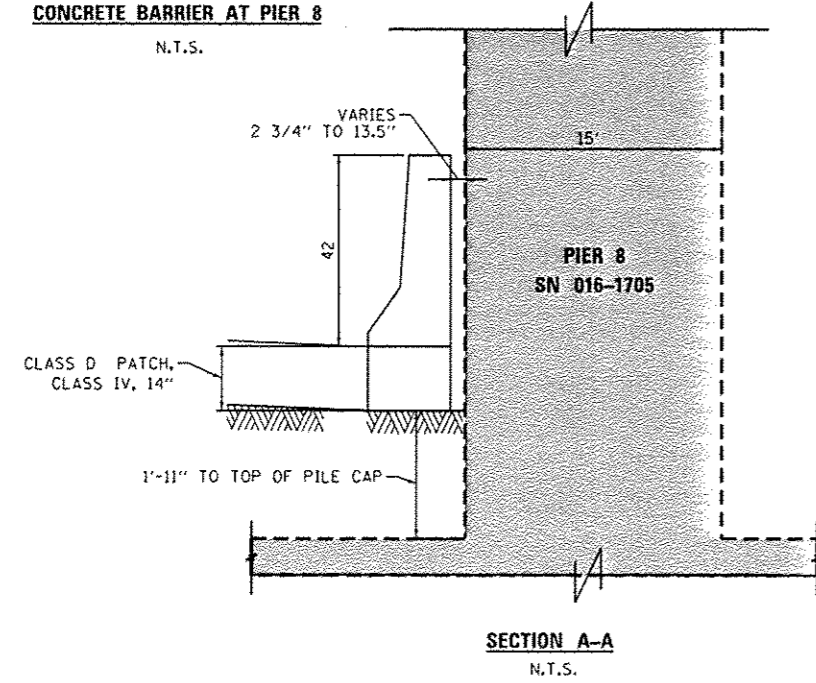
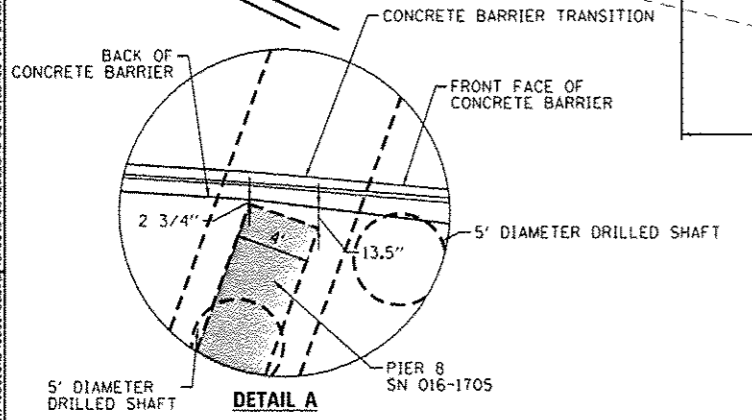


- NOTES:**
- EXPANSION JOINTS SHOWN ON THIS DRAWING SHALL BE PERFORMED JOINT MATERIAL (BITUMINOUS TYPE) FILLER AND SHALL MEET AASHTO DESIGNATION M-33.
  - ALL WORK AND MATERIALS DETAILED HEREIN SHALL BE INCLUDED IN THE COST OF THE VARIOUS CONCRETE BARRIER PAY ITEMS UNLESS OTHERWISE NOTED.
  - PERFORMED JOINT FILLER SHALL BE INCLUDED IN THE COST OF OF CONCRETE BARRIER OR CONCRETE BARRIER TRANSITION.
  - JOINTS SHALL BE CONSTRUCTED AS SHOWN ON THE PLANS AND IN ACCORDANCE WITH ARTICLE 637.08 OF THE STANDARD SPECIFICATIONS
  - TWO VERTICAL EPOXY COATED, NO. 8 TIE BARS, 10" LONG, SHALL BE PLACED STAGGERED FRONT TO BACK OF THE BARRIER WALL AT 48" CENTERS ALONG THE CONCRETE BARRIER TRANSITION. TIE BARS SHALL BE INCLUDED IN THE COST OF CONCRETE BARRIER TRANSITION.
  - HORIZONTAL TIE BARS SHALL BE NO. 6 EPOXY COATED, 24" LONG, 24" C-C AND SHALL BE INCLUDED IN THE COST OF THE BARRIER BASE. HORIZONTAL TIE BARS ARE REQUIRED WHEN PAVEMENT IS PCC.
  - EXPANSION JOINTS SHALL BE CONSTRUCTED IN BARRIER WALL AT MAXIMUM JOINT SPACING OF 90 FEET AND AS SHOWN ON THE PLANS.
  - VERTICAL TIE BARS ARE REQUIRED WHEN CONCRETE BARRIER AND CONCRETE BARRIER BASE ARE NOT POURED MONOLITHICALLY.



016RWB-shs-Detail-07.dgn  
 USER NAME: pmsarno  
 PLOT SCALE: 20,0000' / in.  
 PLOT DATE: 5/27/2014

DESIGNED - OPS  
 DRAWN - NSA  
 CHECKED - DBM  
 DATE - 04/28/14

REVISED - 5/27/2014  
 REVISED -  
 REVISED -  
 REVISED -

STATE OF ILLINOIS  
 DEPARTMENT OF TRANSPORTATION

ROADWAY DETAILS - CONCRETE BARRIER AT PIER 8

SCALE: N.T.S. SHEET 1 OF 1 SHEETS STA. TO STA.

F.A.I. RTE.	SECTION	COUNTY	TOTAL SHEETS	SHEET NO.
90/94/290	2013-010R	COOK	747	644K
CONTRACT NO. 60W28				
ILLINOIS FED. AID PROJECT				